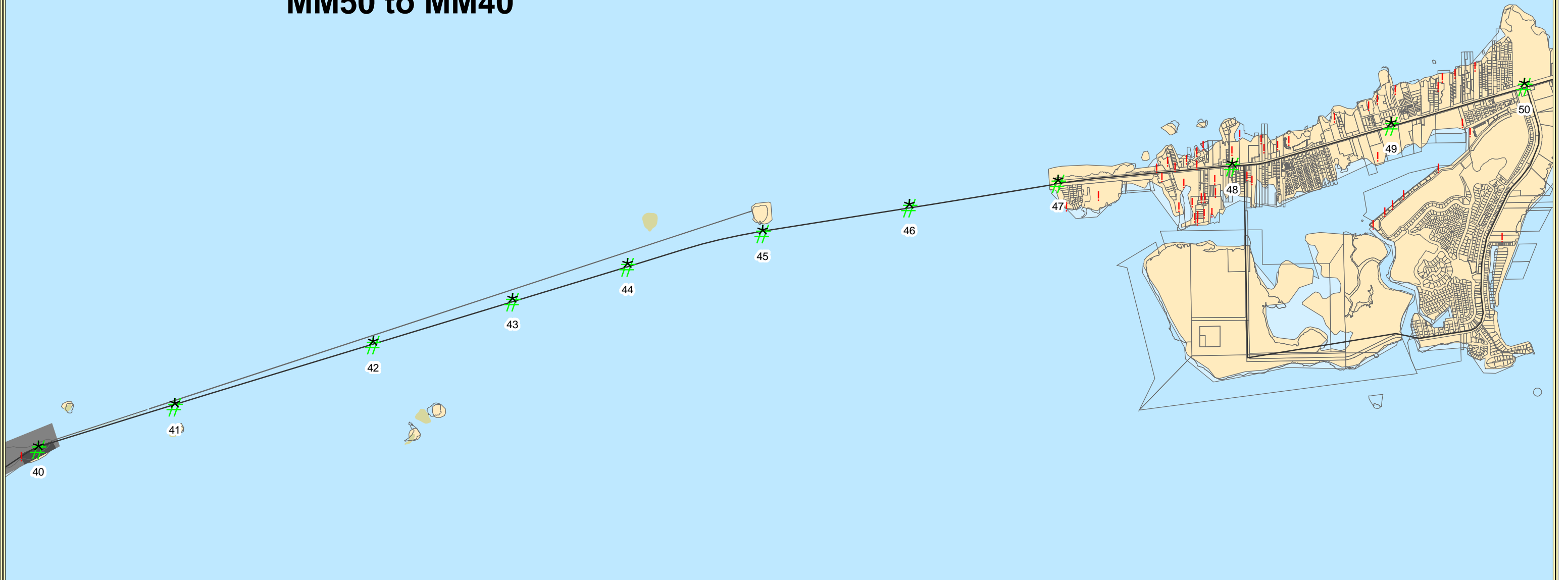


# Monroe County Marine Management Strategic Plan

## Marine Facilities Inventory and Zoning

### MM50 to MM40



Sources: USGS, FDEP, FWRI, MCPA, MCMR, SFRPC. Note: For planning purposes only. All distances are approximate.



#### Zoning Code

Airport	Mixed Use
Conservation	Native Area
Commercial Fishing Area	Offshore Island
Commercial Fishing Special District	Park and Refuge
Commercial Fishing Village	Recreation Vehicles
Destination Resort	Research
Industrial	Sub Urban Commerical
Improved Subdivision	Sub Urban Residential
Improved Subdivision Duplex	Sub Urban Residential-Limited
Improved Subdivision Duplex Masonry	Sparsely Settled Residential
Improved Subdivision Masonry	Urban Commerical
Military	Urban Residential
Maritime	Urban Residential Mobile Home
Mainland Native	Urban Residential Mobile Home-Limited
	Marine Facility
	Mile Marker

Note: Zoning layer only covers unincorporated Monroe County

Last Revision Date: 1/19/06



www.sfrpc.com



**CUES**  
www.cuesfau.org

