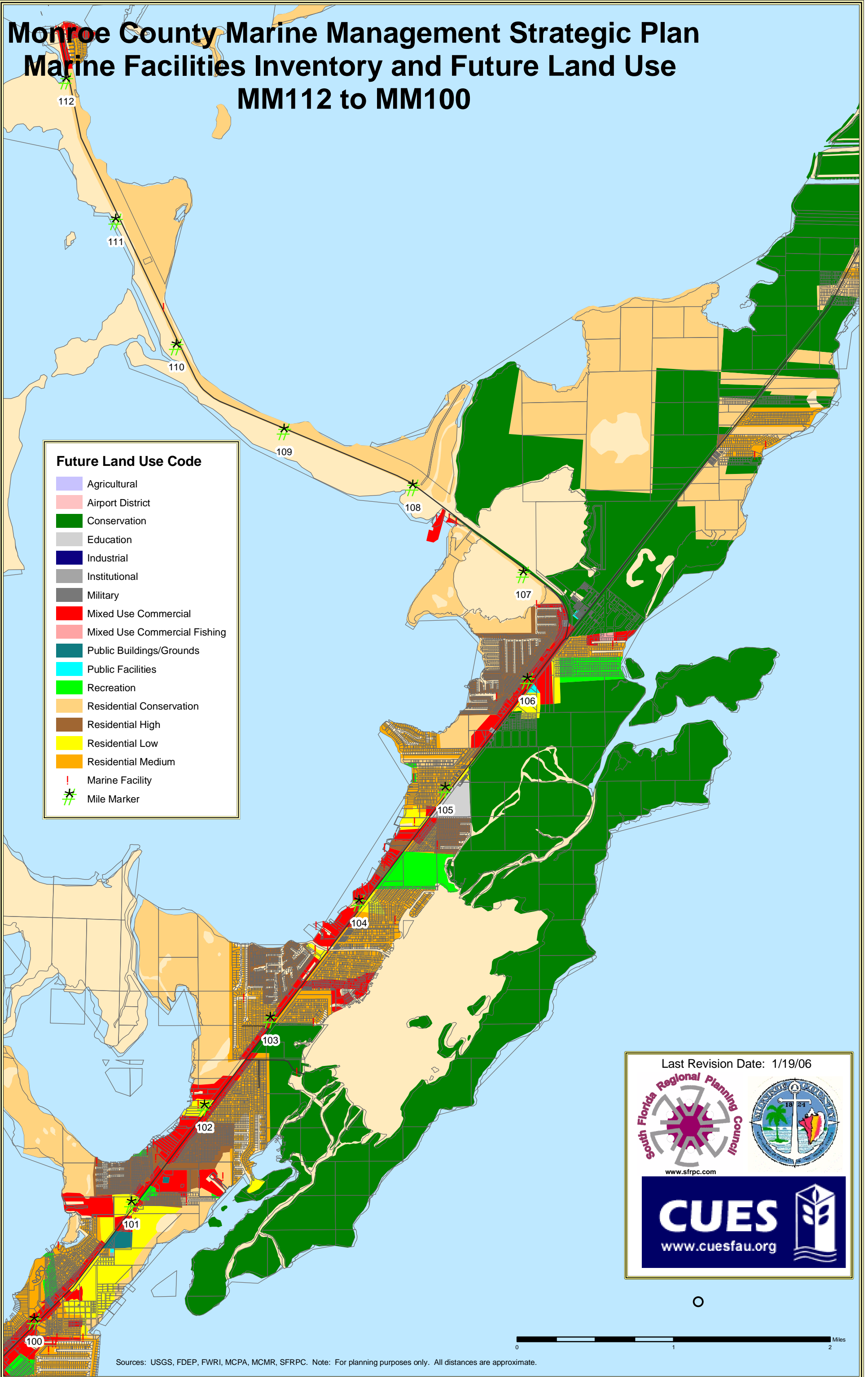


# Monroe County Marine Management Strategic Plan

## Marine Facilities Inventory and Future Land Use

### MM112 to MM100



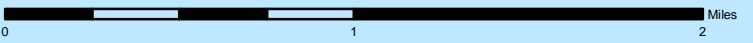
**Future Land Use Code**

- Agricultural
- Airport District
- Conservation
- Education
- Industrial
- Institutional
- Military
- Mixed Use Commercial
- Mixed Use Commercial Fishing
- Public Buildings/Grounds
- Public Facilities
- Recreation
- Residential Conservation
- Residential High
- Residential Low
- Residential Medium
- Marine Facility
- Mile Marker

Last Revision Date: 1/19/06

www.sfrpc.com

www.cuesfau.org



Sources: USGS, FDEP, FWRI, MCPA, MCMR, SFRPC. Note: For planning purposes only. All distances are approximate.