

Creating Southeast Florida's Regional Plan for Sustainable Development

presented by
John Kaliski
Cambridge Systematics, Inc.

July 7, 2010



**Southeast Florida
Regional Partnership**

Indian River - St. Lucie - Martin
Palm Beach - Broward - Miami-Dade - Monroe

A Few Reflections ...

- Why work together as a region?
- What can we learn from others?
- How do we get started?

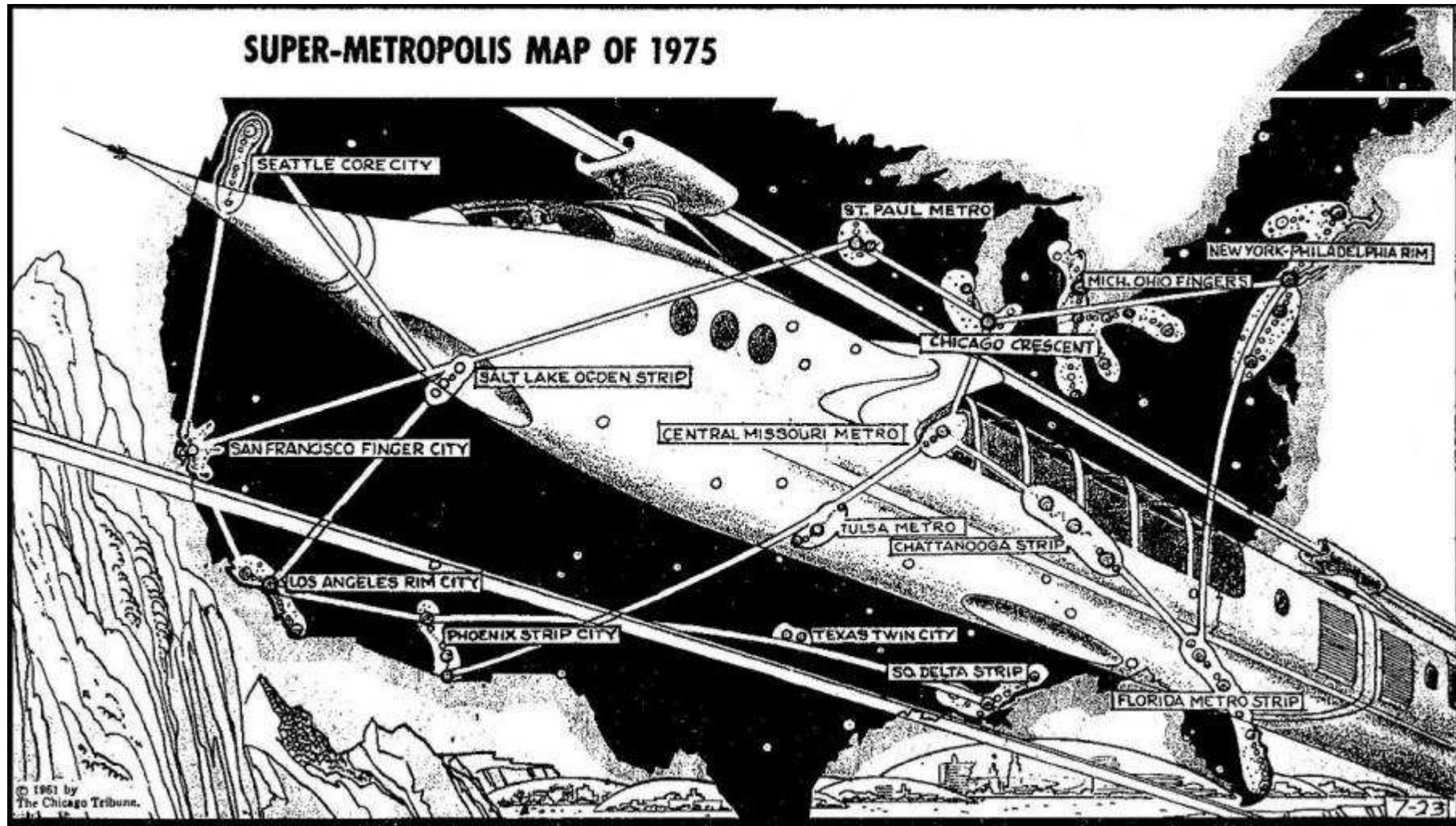


Why Work Together Regionally?

- **Position Southeast Florida for future federal and state funding**
- **Achieve scale to compete in the global market**
- **Address issues and opportunities to ensure future sustainability and livability for entire 7-county area**

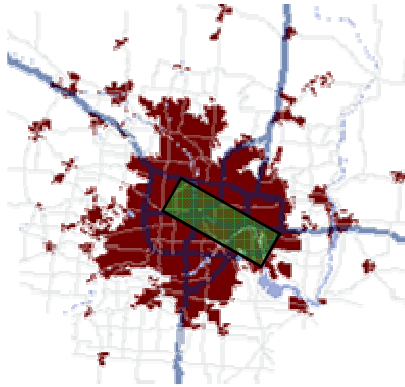


Regional Thinking Is Not New...

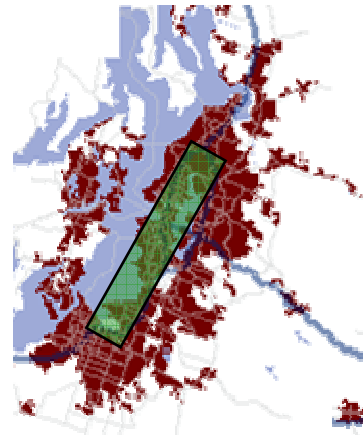


...But the Scale Is Greater than Before

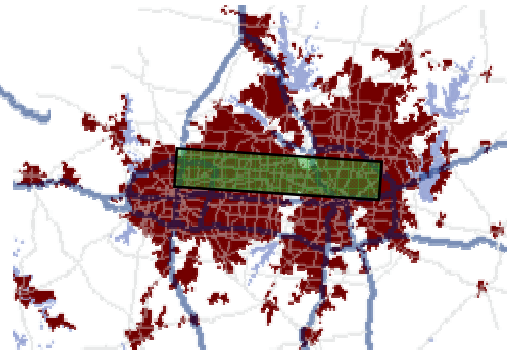
Minneapolis-St. Paul (8m)



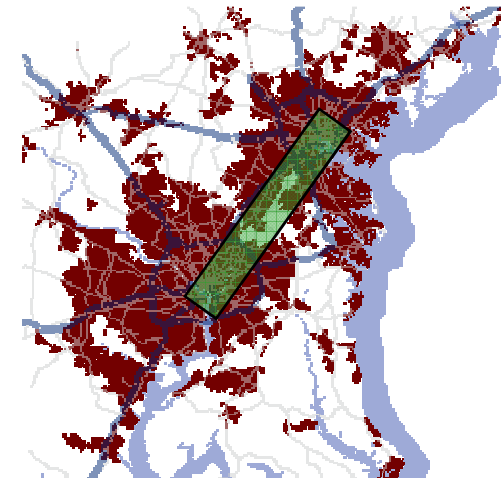
Seattle-Tacoma (25m)



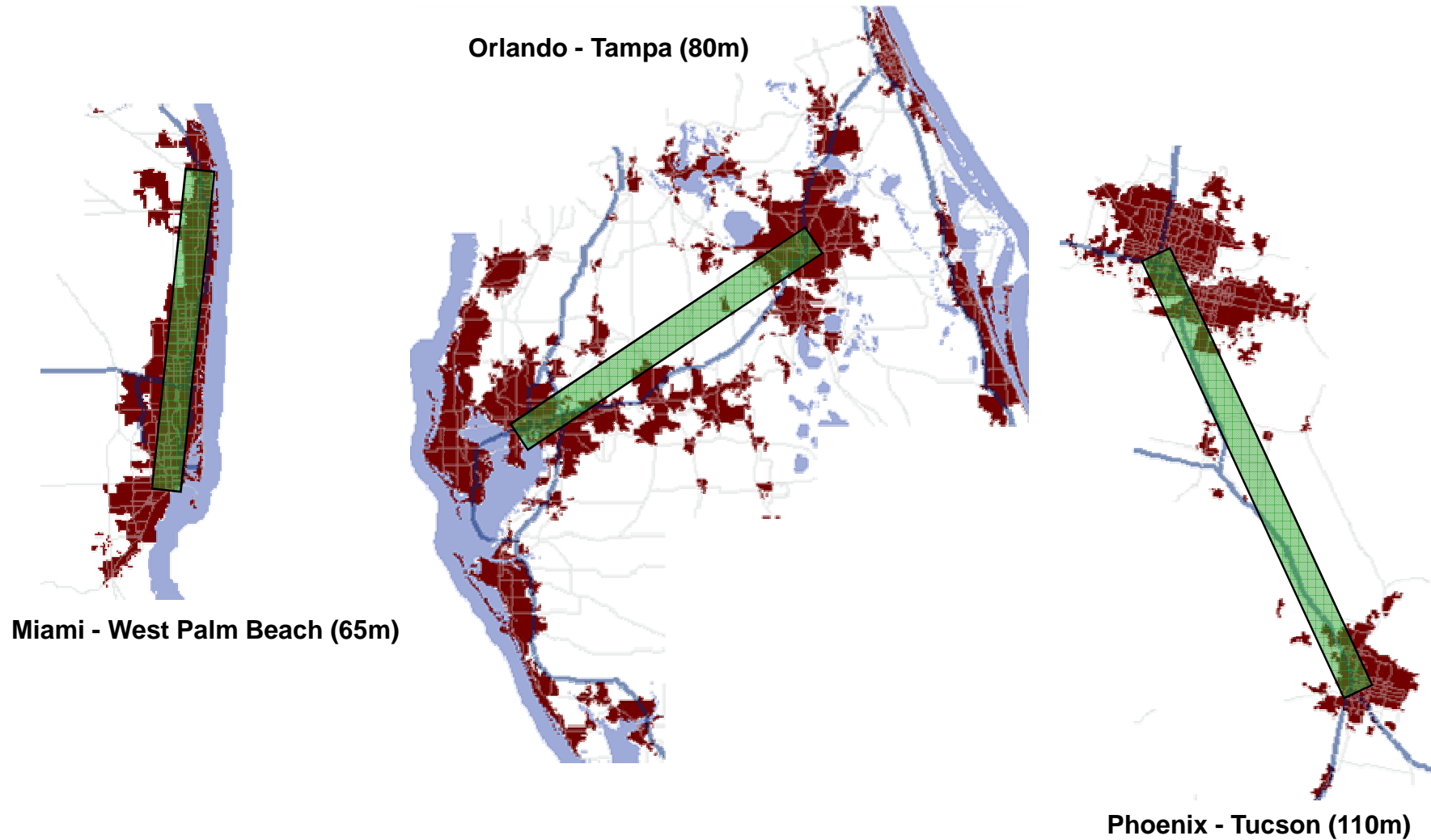
Dallas-Ft. Worth (30m)



D.C. - Baltimore (35m)



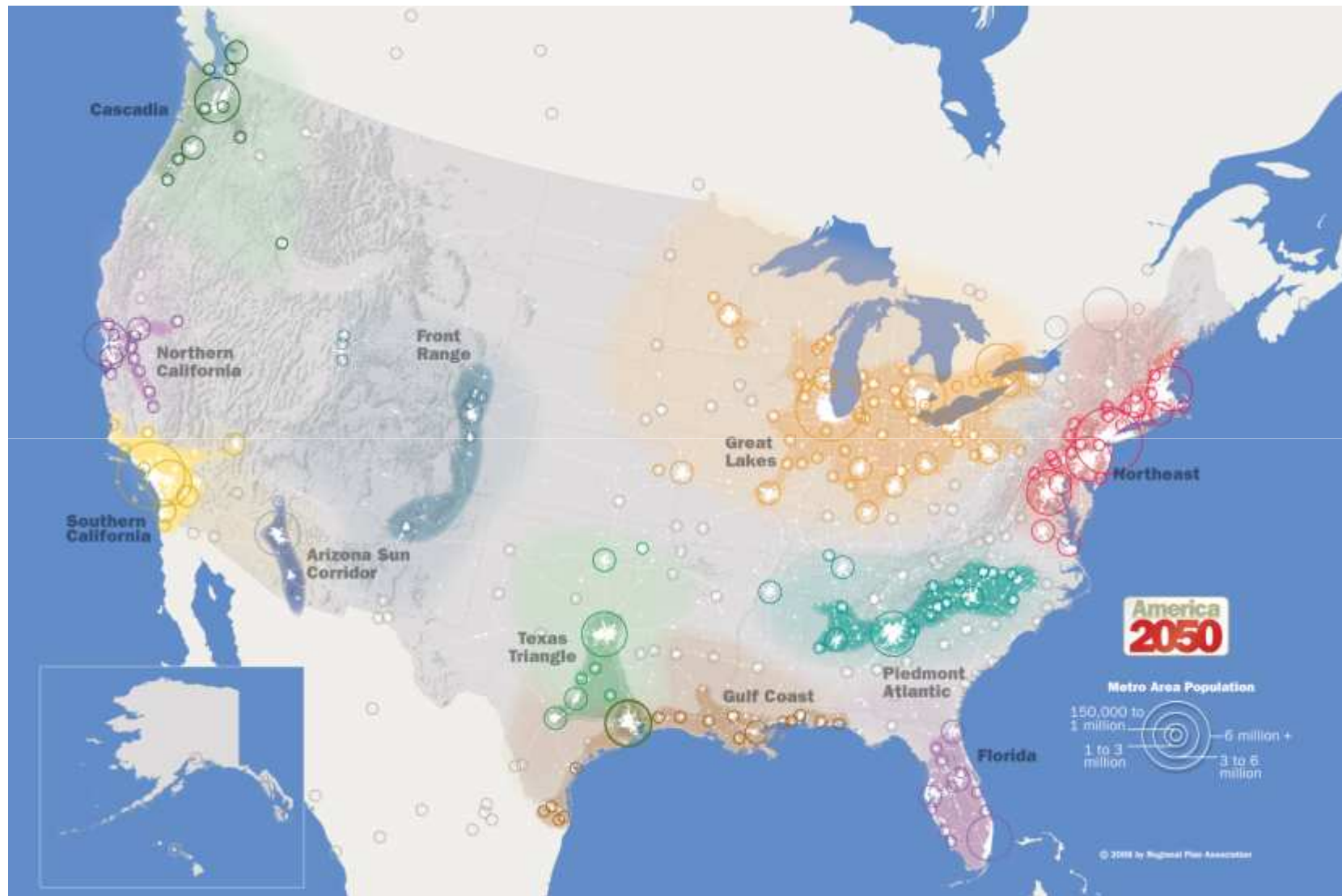
...But the Scale Is Greater than Before



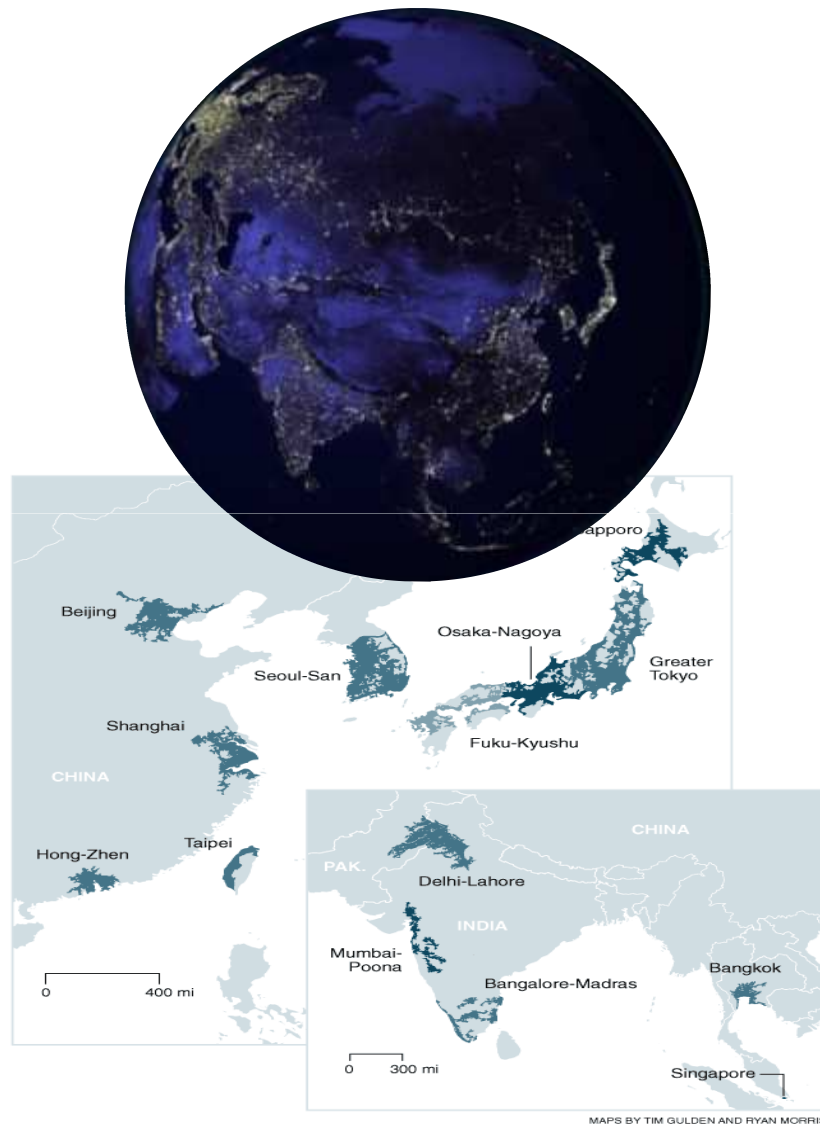
**Southeast Florida
Regional Partnership**

Indian River - St. Lucie - Martin
Palm Beach - Broward - Miami-Dade - Monroe

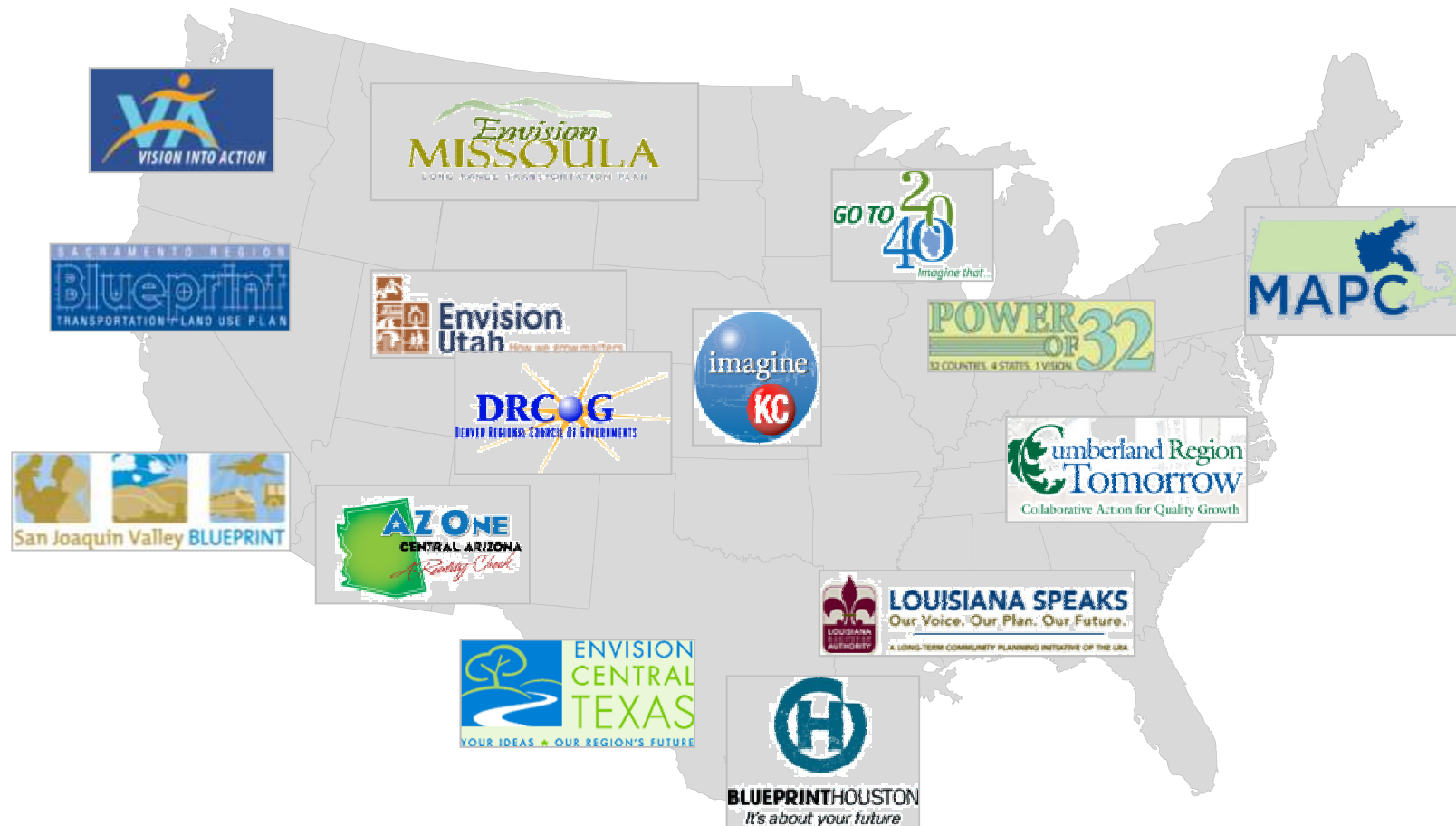
Emerging U.S. Megaregions



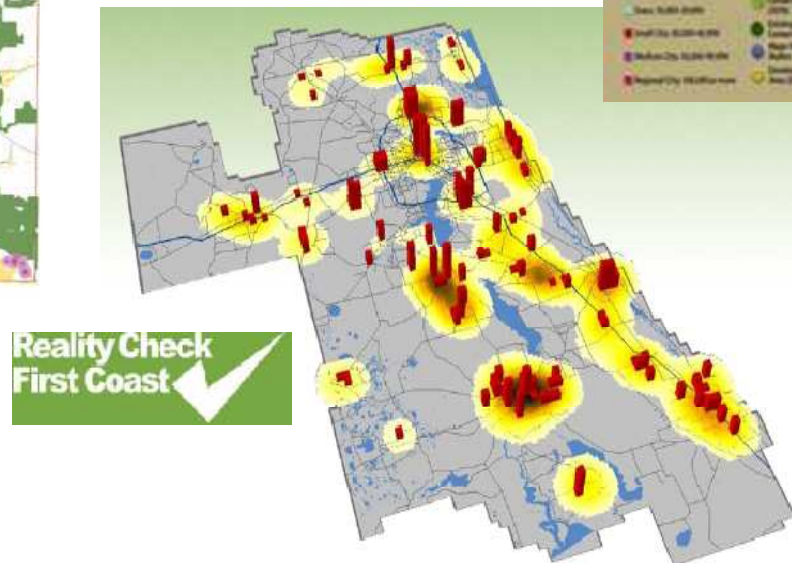
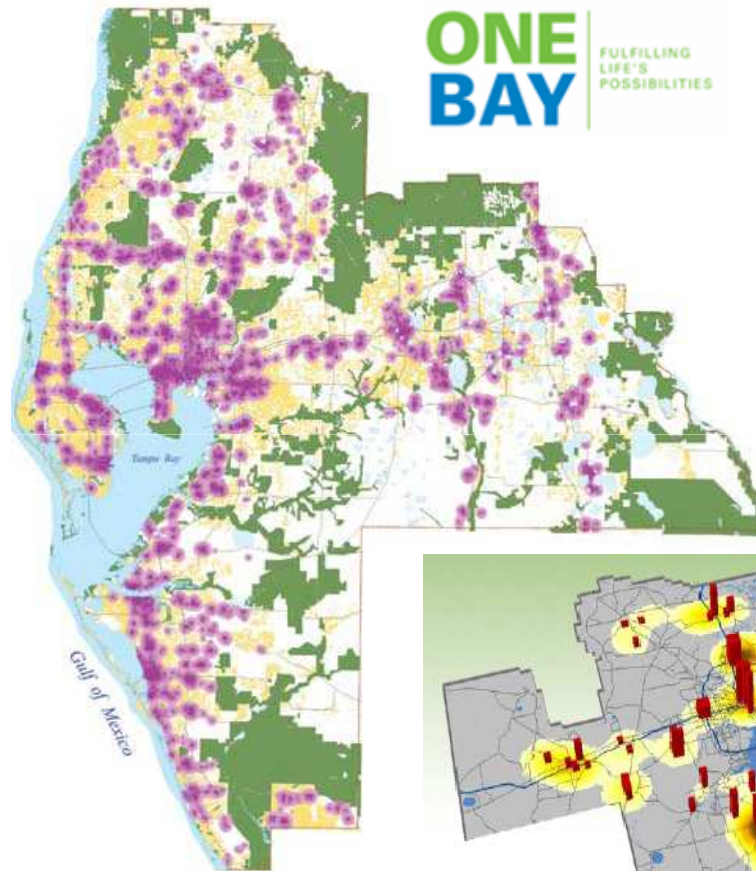
Global Megaregions



Examples of National Regional Visioning Processes




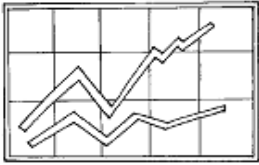


Examples of Florida Regional Visions



**Southeast Florida
Regional Partnership**

Indian River - St. Lucie - Martin
Palm Beach - Broward - Miami-Dade - Monroe

Creating a Regional Vision/ Plan for Sustainable Development

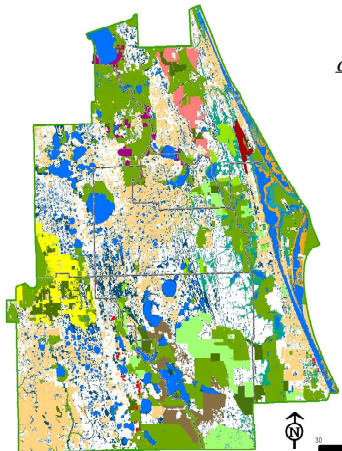
Where Are We Now?	Where Are We Going?	Where Do We Want to Be?	How Do We Get There?
			
Regional Profile	Trends and Conditions	Vision Statement	Implementation Strategies
<p>Define region and develop shared identity and values</p> <p>Compile existing regional information</p> <p>Assess existing public, private, and civic plans</p>	<p>Establish benchmark trends and conditions</p> <p>Identify priority issues and guiding principles</p> <p>Identify alternative growth strategies</p> <p>Collect community input</p>	<p>Create regionally preferred future growth strategy</p> <p>Craft shared regional vision</p> <p>Develop implementation goals and strategies</p>	<p>Produce vision statements, goals, policies, inter-governmental agreements, other implementation tools</p> <p>Establish process to update vision and to measure progress toward achieving regional vision</p>

Typical Process



“How Shall We Grow?” Vision

Where are we now?



- *Establish core values*

Where are we going?



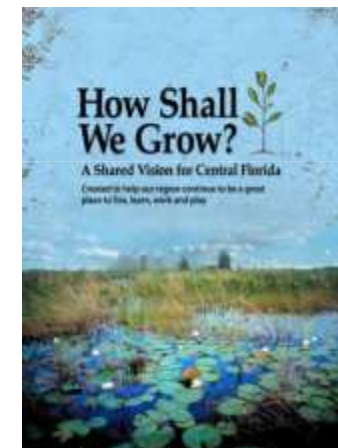
- *Assess alternatives*

Where do we want to be?



- *Determine preferred future*

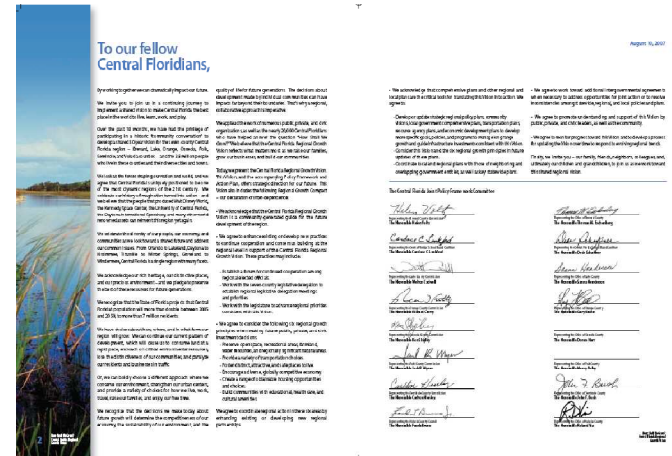
How do we get there?



- *Implement vision*

“How Shall We Grow?” Implementation

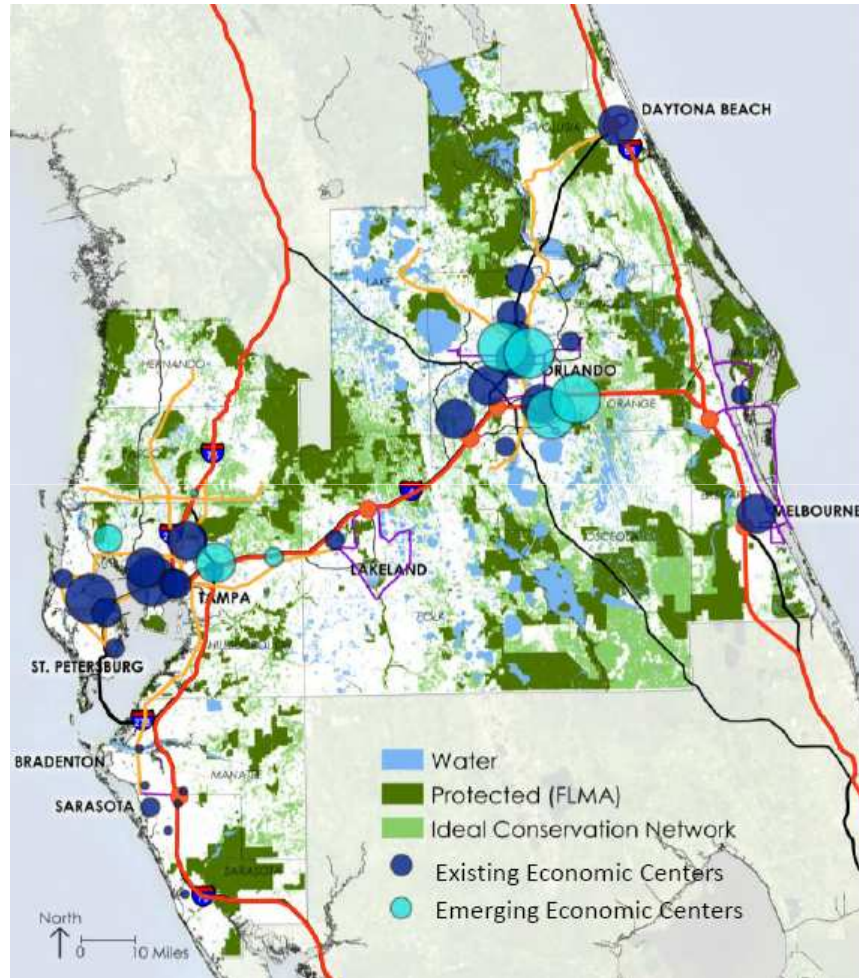
- Regional growth compact
- Regional Congress of Elected Officials
- Integration into regional plans
 - 2060 Strategic Regional Policy Plan
 - Comprehensive Economic Development Strategy
 - 5 MPO long range transportation plans
- Progress on regional priorities
 - “Greenprint”
 - Water
 - Transportation
- Local implementation
 - 60% of 93 jurisdictions addressed some aspect of vision within first 2 years



Southeast Florida Regional Partnership

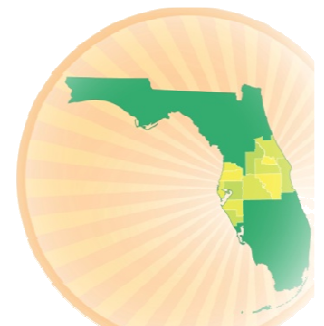
Indian River - St. Lucie - Martin
Palm Beach - Broward - Miami-Dade - Monroe

Next: Working as a Super Region



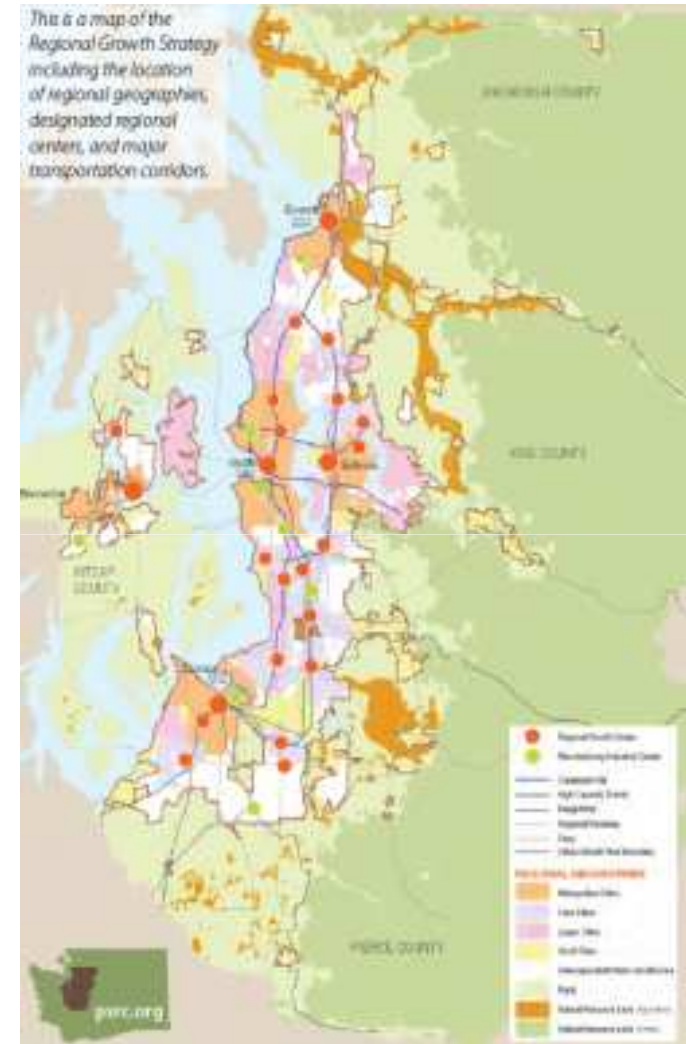
- 15 counties
- 3 overarching concepts
 - Economy
 - Transportation
 - Environment

Florida's Super Region: Connecting for Global Competitiveness
July 2010



Puget Sound VISION 2040

- Continuous planning since 1990
- Developed over 4 years with extensive public input
- Scenario planning for future choices
- Objectives:
 - Contain expansion of urban areas
 - Conserve farm and forest lands
 - Support compact communities
 - Focus new employment and housing in urban centers



Puget Sound VISION 2040 Implementation

- **Implementation**

- integration with regional transportation and economic development plans
- Enhanced tools – plan review, design guidelines, parking management, concurrency, regional transfer of development rights program

- **Outcomes**

- Higher-density, mixed-use development in centers, especially Seattle
- Transportation choices -- transit mode share over 10%
- Continued evolution of economy
- Integration into binational “Cascadia” region



Lesson 1 – It's All About Leadership

- **Must include**
 - Public – *Elected Officials*
 - Private
 - Civic



Lesson 2 – Create an Inclusive Process

- **Engage community and stakeholders in multiple ways**
- **Actively encourage diverse participation**
- **Special emphasis on younger residents, hard-to-reach groups**



Lesson 3 – Base Decisions on Data

- Understand region before you start process
- Use data and tools to illustrate choices and support decision making



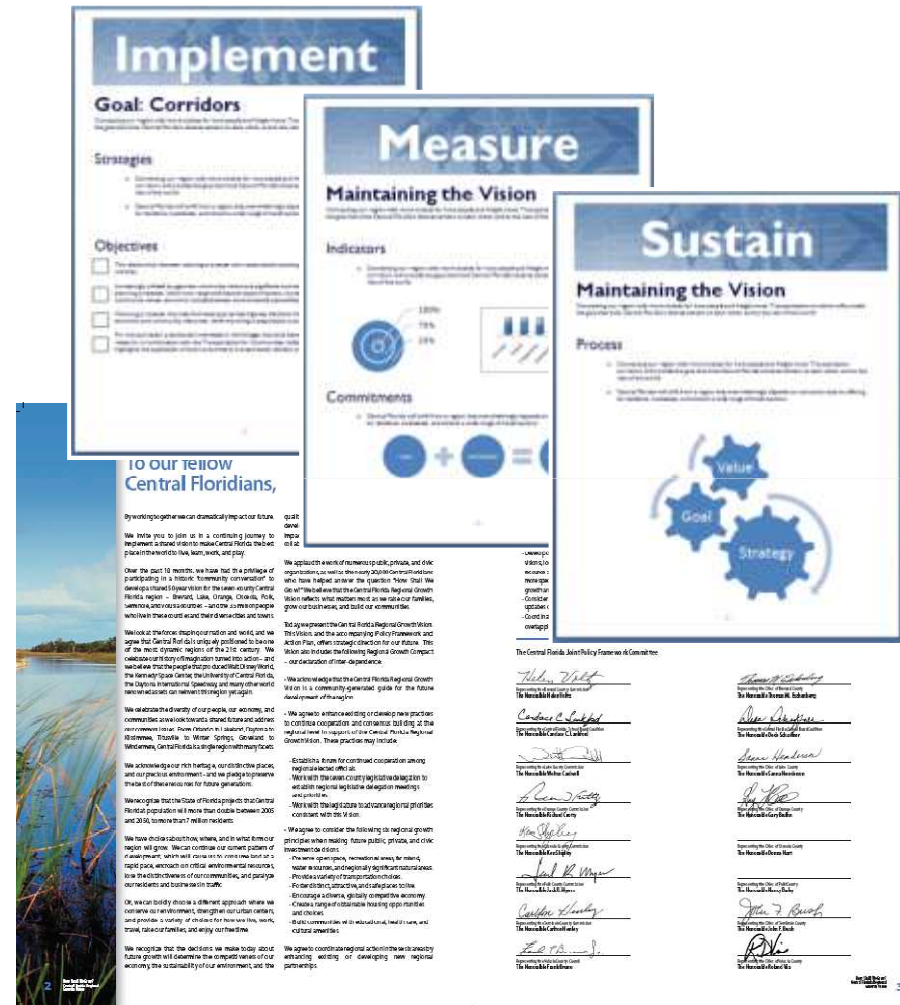
Lesson 4 – Take an Integrated Approach

- Triple bottom line > Social – Environmental – Economic



Lesson 5 –Plan for Implementation

- Ensure that implementing agencies are on board
- Determine how decisions will be made
- Look for early wins
- Integrate with other statewide, regional, local processes



**Southeast Florida
Regional Partnership**

Indian River - St. Lucie - Martin
Palm Beach - Broward - Miami-Dade - Monroe

Lesson 6 – Dare to Dream

