

Miami-Dade Transit

- *Is the largest transit agency in the State of Florida, 14th largest in the country*
- *Operates four transit modes:*



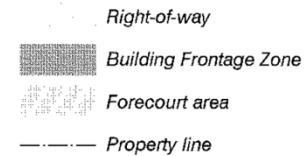
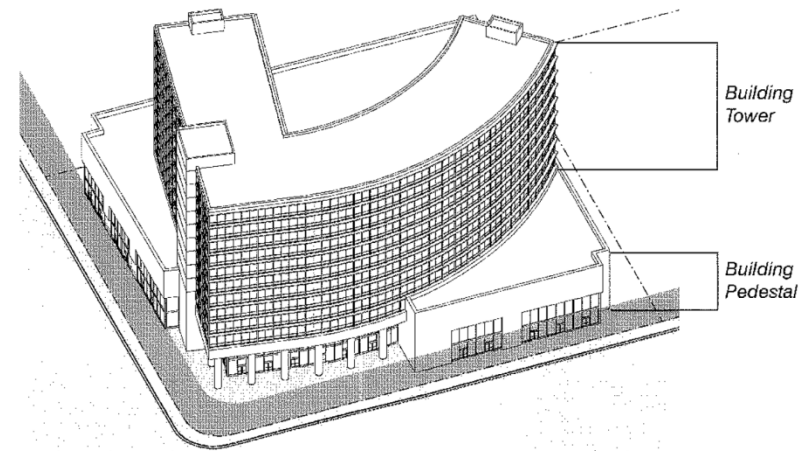
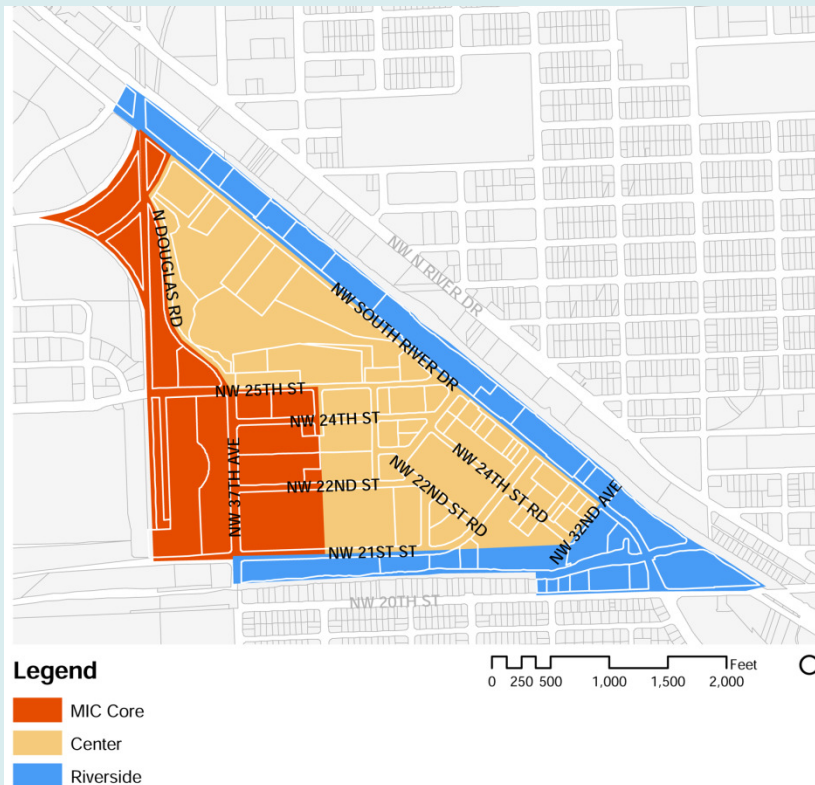


- *Opened for Revenue Service July 28, 2012*
- *2.4 mile extension from Earlington Heights station to Miami International Airport (MIA) station at the Miami Intermodal Center (MIC)*





PALMER LAKE METROPOLITAN URBAN CENTER DISTRICT (PLMUC)



Transit Oriented Development Goals

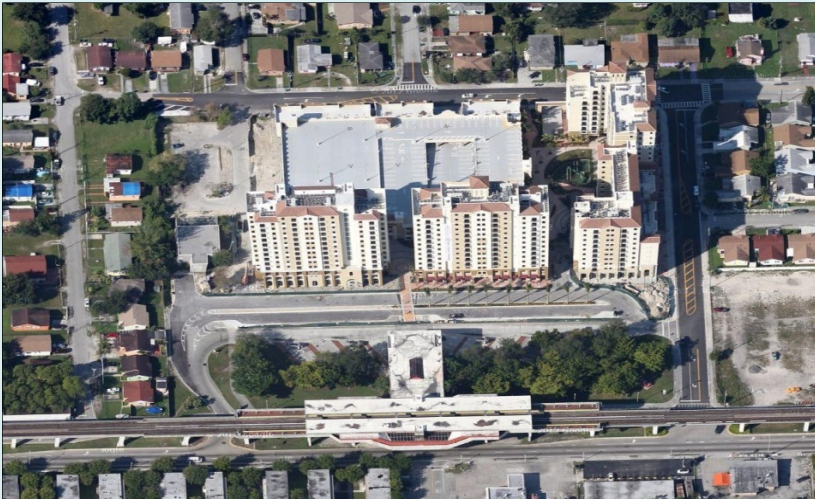
- *Create Attractive and Dynamic Station Areas*
- *Increase Transit Ridership by focusing on livable Communities*
- *Generate Revenue*
- *Enhance the Value of Transit Infrastructure*



*Station Area Profiles
were completed for
each Metrorail Station
between 1978 and 1981*



Brownsville



- 2003 Community Charrette created a vision for this site
- Public-Private Partnership
- First LEED certified TOD in Miami-Dade County
- Five phased affordable housing project with midrise apartment buildings, townhomes and a parking garage; ground-floor commercial space and Metrorail station improvements
 - Phases 1 thru 4 - (401 residential units), parking garage occupied as of Summer 2012
 - Phase 5 – planned (65 residential units)

Northside



- Total of 438 residential units, 4 buildings
- 20,000sf of retail commercial space
 - Located on ground floor of each building
- Estimated \$88 million
- Parking structure with a total of 598 parking spaces - 250 dedicated to transit





WHERE PUBLIC TRANSPORTATION GOES
COMMUNITY GROWS

