

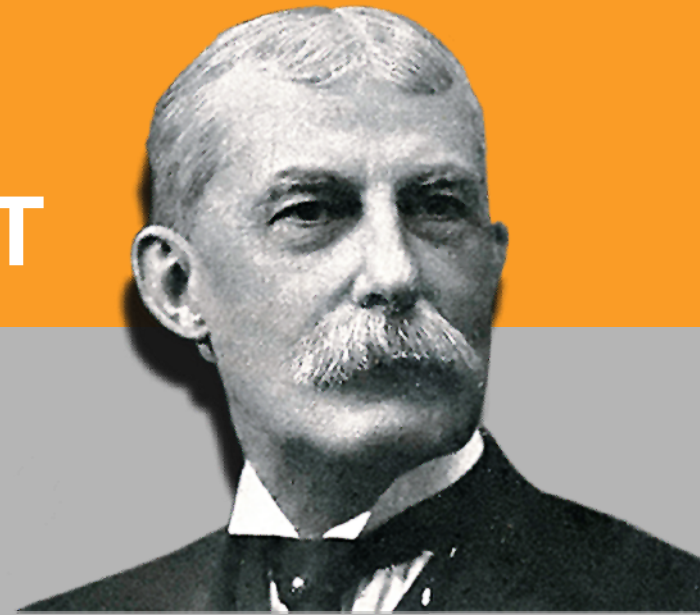


South Florida Regional Planning Council

**December
2012**

A NEW IDEA ROOTED IN HISTORIC PRECEDENT

**FOUNDED IN 1892
BY HENRY M. FLAGLER**



Henry Flagler, a Florida icon

Florida East Coast Railway built and expanded in 1890s

Railway linked Jacksonville and Key West

Catalyzed development of cities, hotels and attractions along the east coast

Flagler amassed a significant land portfolio, laying the foundation for our real estate, transportation and infrastructure company



TRANSFORMING FLORIDA



Commercial Real Estate



Passenger Rail



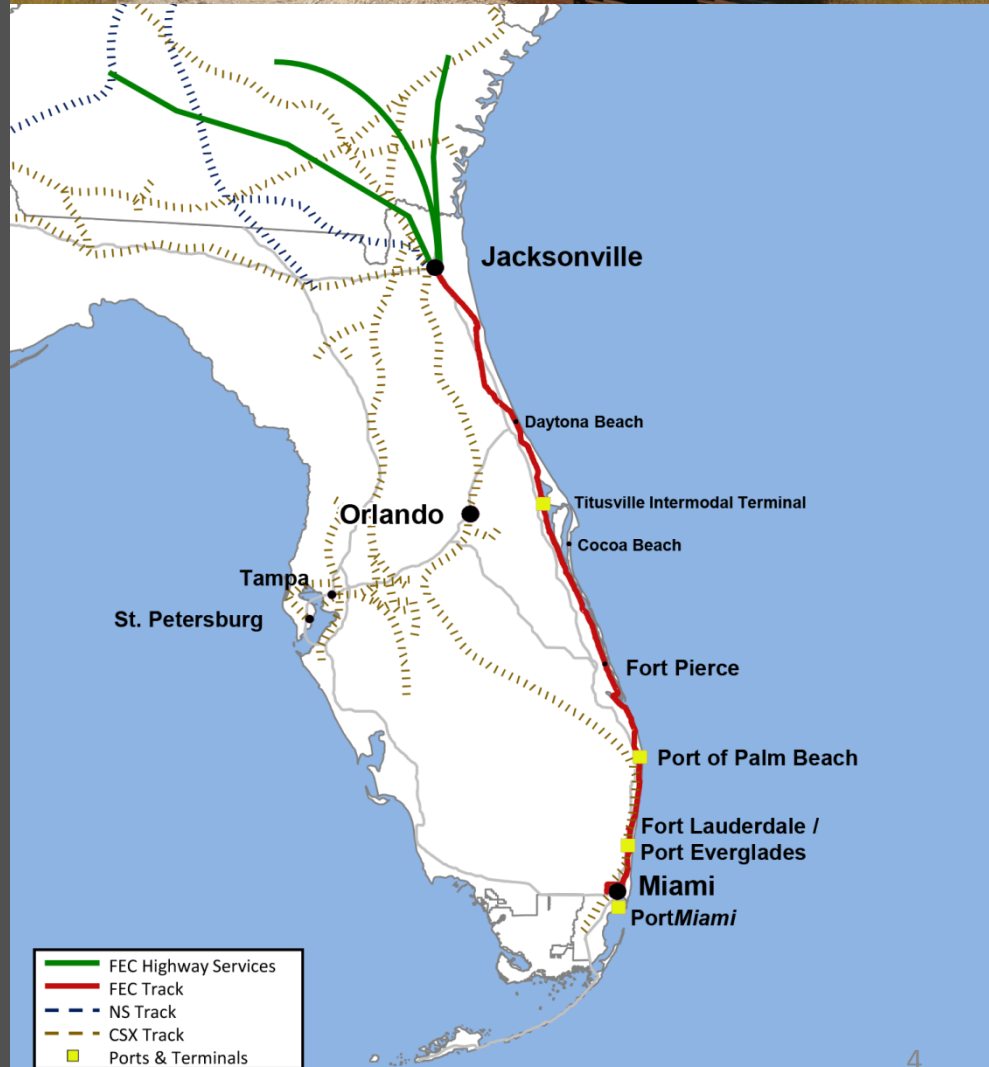
Logistics Solutions



R.O.W. Management

Freight trains have operated in the **Florida East Coast Corridor** since the late 1800s.

Passenger service continued into the 1900s and ultimately ended in **1968.**



Since 1968, the reintroduction of passenger service in our corridor has been discussed and studied –

but never executed by a public or private company.



Fast forward to 2012

and the company founded on Henry Flagler's roots is poised to transform Florida again.

All Aboard Florida

is developing an intercity passenger rail service between South and Central Florida.

Stations will be located in Miami, Fort Lauderdale, West Palm Beach and Orlando.

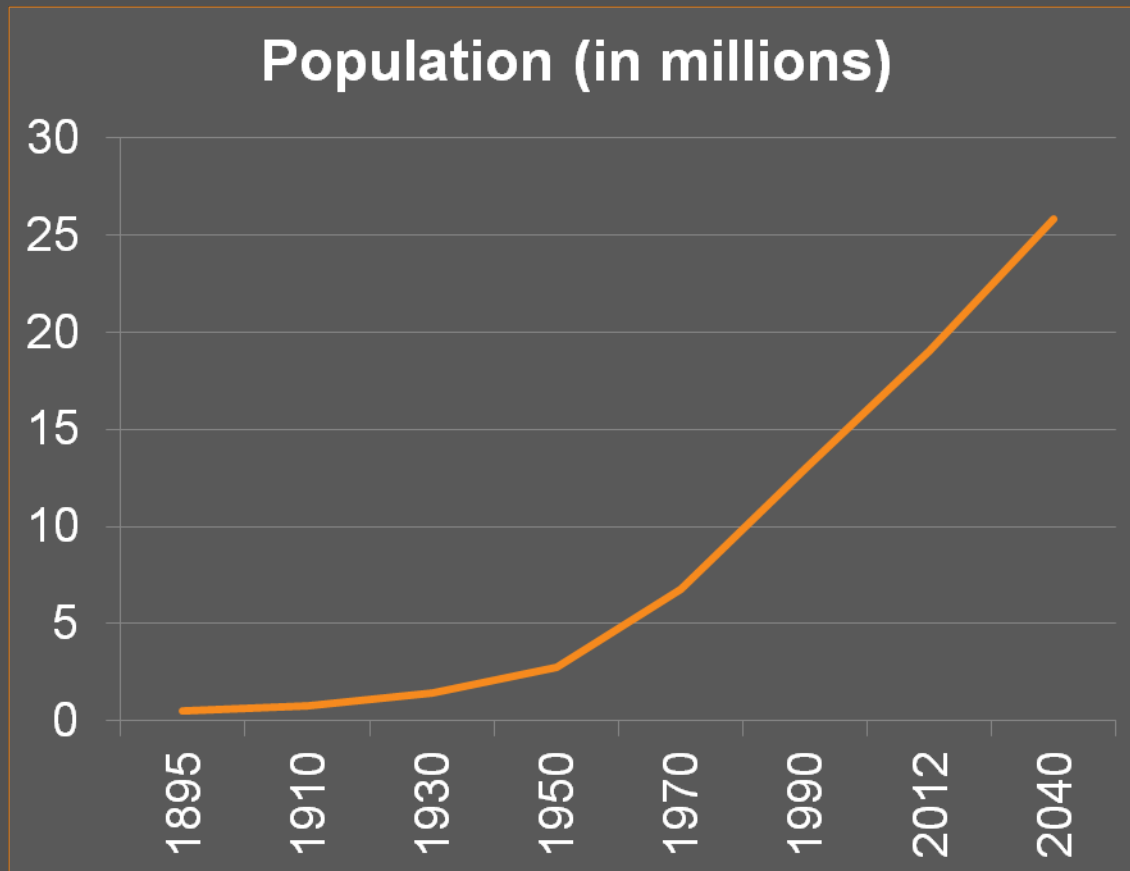




Imagine a faster, reliable and more convenient way to travel

- Three hour trip between downtown Miami and Orlando
- Train speeds will reach up to 125 mph
- Frequent, regularly scheduled round trip service
- Premium amenities
 - Areas designed for traveler's needs, like work or play
 - Wi-Fi
 - Quality meal and beverage service
 - Downtown departure locations
 - Connections with existing and future transportation networks

Florida's population continues to **grow.**



More than **50 million trips** are taken by people traveling between these four major hubs.

95 percent
are by
automobile.

All Aboard Florida will utilize an **existing transportation corridor** to connect the state's largest city with the most visited city in the U.S.



Orlando to Miami is one of the most compelling markets in the U.S. for **intercity passenger rail**.



2011

Central Florida

Statistics

- » Third most populated region in Florida with 2.13 million residents
- » More than 51 million people visited the greater Orlando area and spent more than \$31.7 billion
- » The overwhelming majority were domestic travelers
- » More than 35 million passengers departed or arrived at Orlando International Airport
- » More than one million people attended an event or conference at the Orange County Convention Center

- » Most populated region in Florida with 5.57 million residents
- » More than 13 million people visited the greater Miami area and spent more than \$20.7 billion
- » The percentage of domestic and international travelers is almost evenly split, 52 and 48 percent
- » More than 38 million passengers departed or arrived at Miami International Airport
- » More than 4 million passengers sailed on a cruise ship from Port Miami, and more than 3.6 million sailed from Port Everglades

2011

Greater Miami Statistics

Traveling by car is
unpredictable

- Roads are congested
- Travel time is more than four hours between Central and South Florida
- Gas prices continue to rise





Traveling by plane is
uncontrollable

- Security lines are long
- Flights are often delayed
- Tickets and baggage fees are expensive

Significant

market opportunity exists

**Florida
residents**

**Business
travelers**

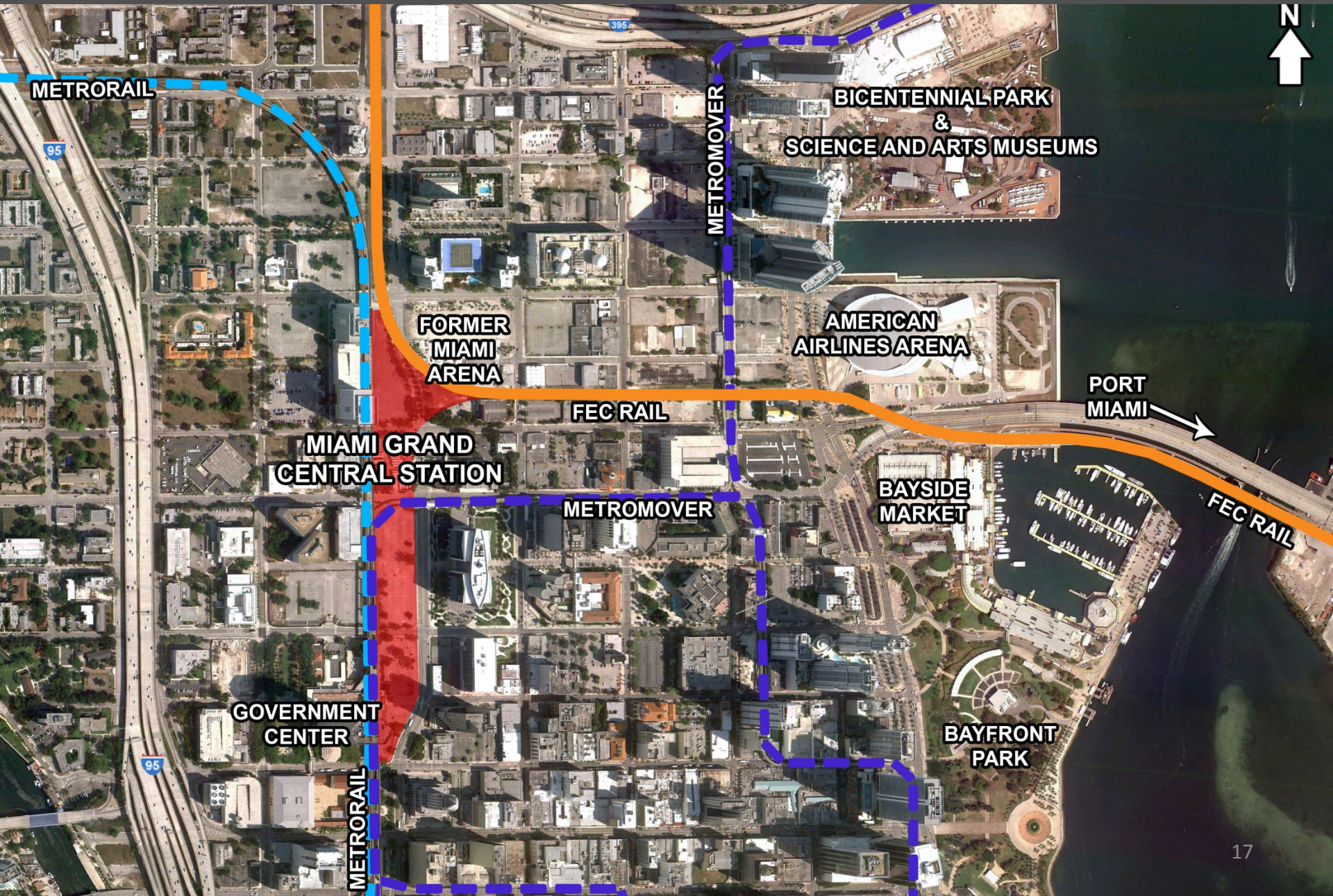
**Domestic
tourists**

**International
tourists**

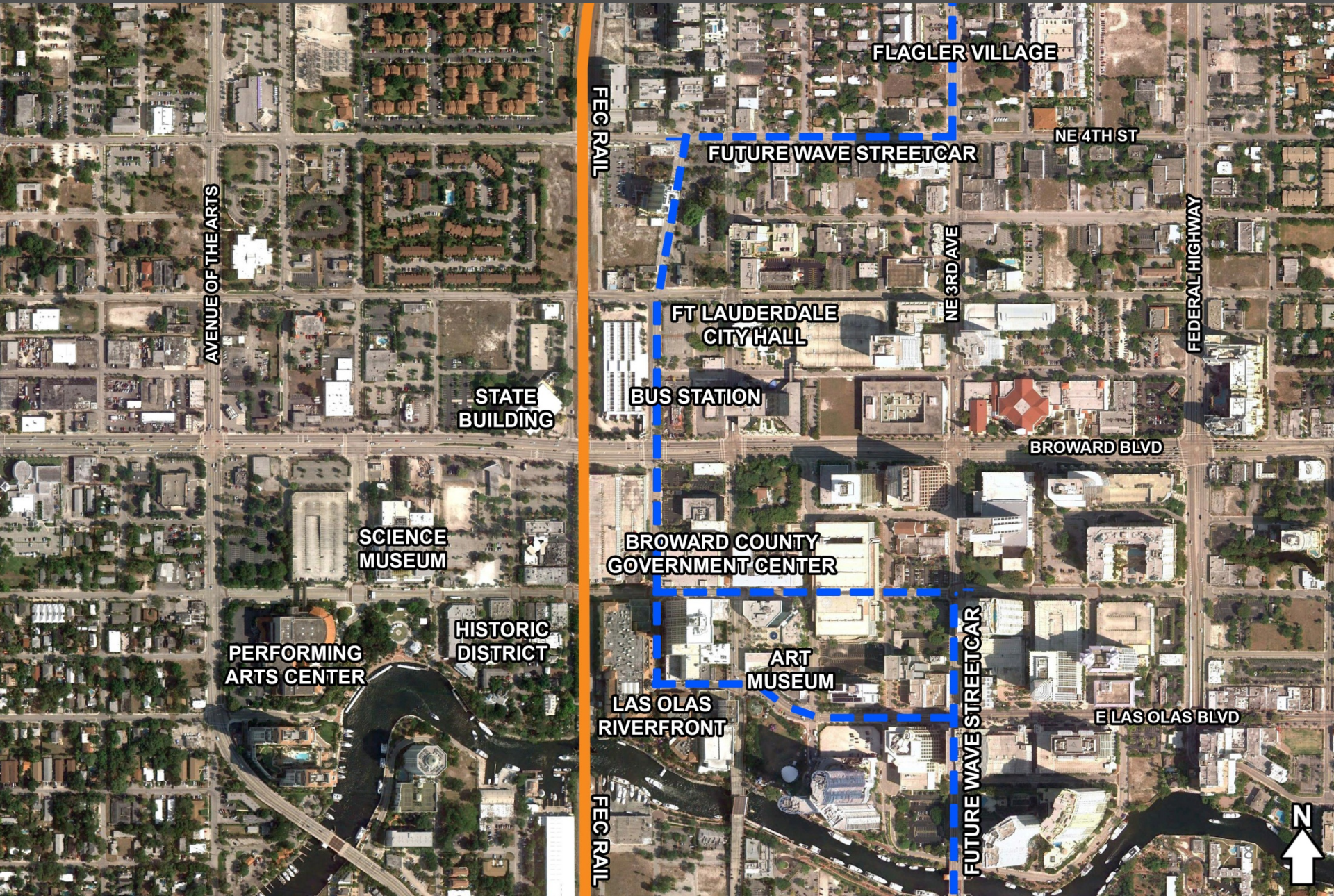
All Aboard Florida will be more than a train.
It will be an **experience.**



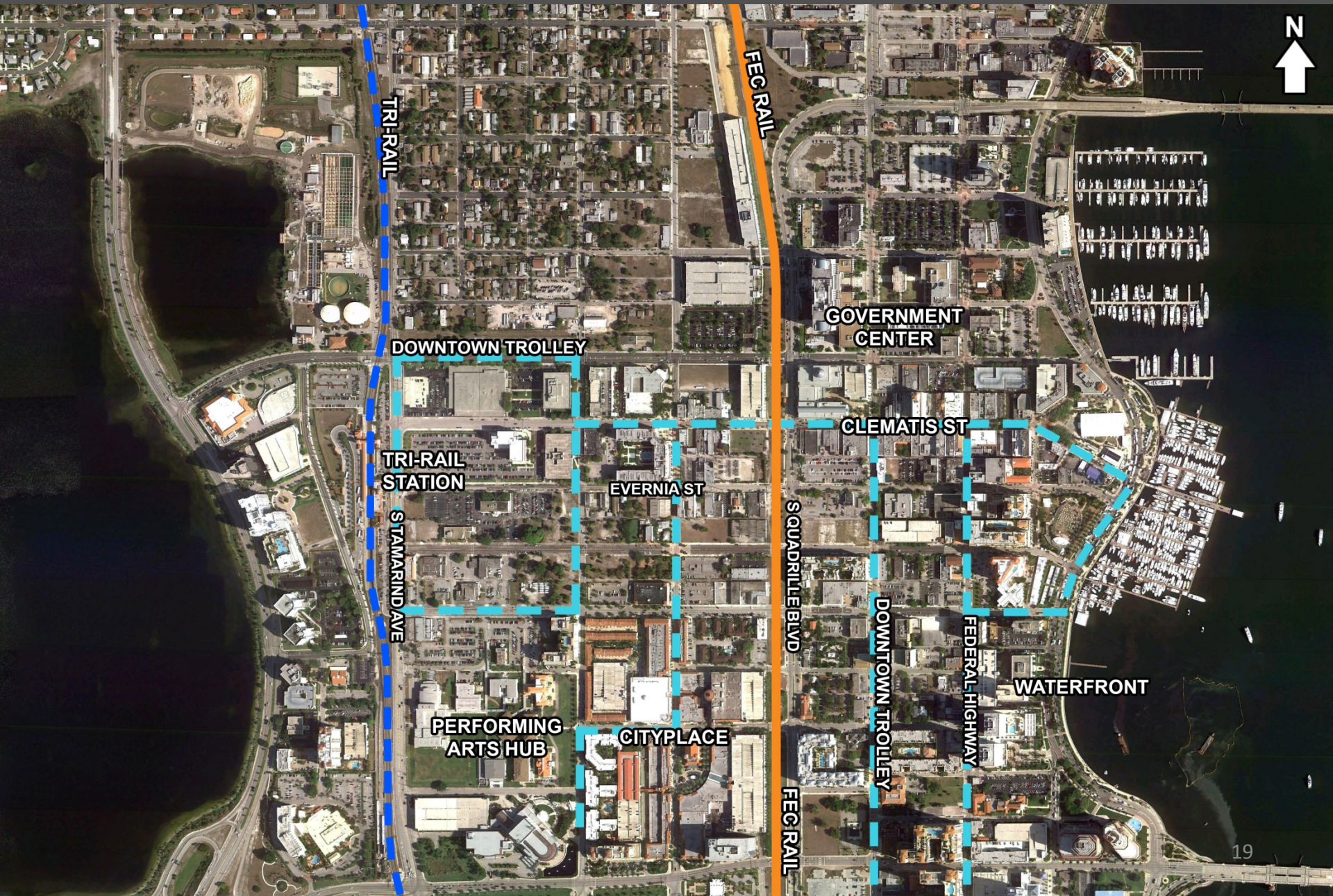
MIAMI



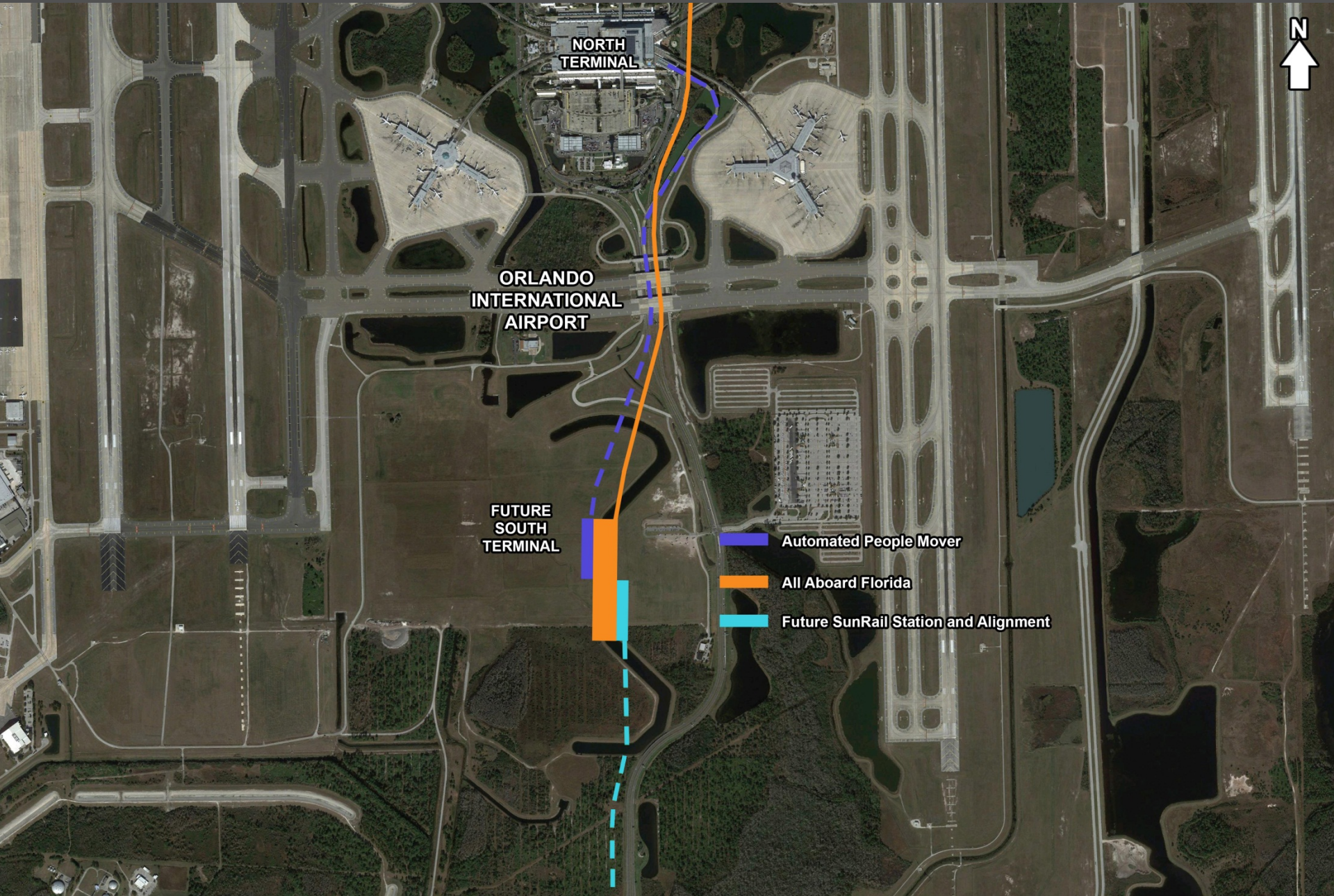
FORT LAUDERDALE



WEST PALM BEACH



ORLANDO



NORTH
TERMINAL

ORLANDO
INTERNATIONAL
AIRPORT

FUTURE
SOUTH
TERMINAL

Automated People Mover

All Aboard Florida

Future SunRail Station and Alignment



Timeline – Moving Forward to Deliver Project

COMPLETED AND ONGOING ACTIVITIES

- Stakeholder discussions
- Finalized initial ridership, engineering and environmental reviews
- Hired key staff members
- Selected master planner and environmental engineering firms

NEXT STEPS

- Determine final route alignment and construction cost
- Finalize station locations
- Select rolling stock provider and operator
- Begin station and rail infrastructure construction

All Aboard Florida will

- Provide a seamless transportation option between Florida's major destinations
- Unleash an entrepreneurial spirit through private investment to innovate and redefine the travel experience
 - Create 6,000 direct rail construction jobs and 400 permanent jobs for rail operations
- Revitalize local economies and create thousands of indirect jobs from transit oriented development
- Use clean diesel engines that meet the highest emissions standards
- Encourage transit oriented development and livable communities
- Remove up to three million cars from Florida's roads each year, reducing emissions and improving air quality