



MEMORANDUM

AGENDA ITEM #7k

DATE: APRIL 6, 2009

TO: COUNCIL MEMBERS

FROM: STAFF

SUBJECT: CITY OF NORTH BAY VILLAGE ADOPTED COMPREHENSIVE PLAN AMENDMENT

Introduction

On March 24, 2009, Council staff received adopted plan amendment #09-RWSP1 to the City of North Bay Village Comprehensive Plan for review of consistency with the *Strategic Regional Policy Plan for South Florida (SRPP)*. The proposed amendment was reviewed at the December 1, 2008 Council meeting and found to be generally consistent with the *SRPP*. Staff review is undertaken pursuant to the Local Government Comprehensive Planning and Land Development Regulation Act, Chapter 163, Part II, Florida Statutes (F.S.), and Rules 9J-5 and 9J-11, Florida Administrative Code (F.A.C.).

Community Profile

The City of North Bay Village is a three-island community situated in northeast Miami-Dade County between the cities of Miami and Miami Beach. The three islands, North Bay Island, Harbor Island and Treasure Island, are linked by the John F. Kennedy (79th Street) Causeway, which extends across Biscayne Bay from Miami to Miami Beach. The City has excellent access to major airports, beaches, downtown Miami and Broward County via I-95 and 79th Street. North Bay Village was incorporated in 1945, and the population in 2008 was estimated to be 6,814, an increase of 1.2 percent since the year 2000. Prior to 1940, most of what is now North Bay Village lay beneath the water of Biscayne Bay. In 1940 dredging and bulk-heading created North Bay Island. During the mid-40s dredging and filling created Harbor Island and Treasure Island, which were annexed by North Bay Village several years later. Broadcast Key, also known as Cameo Island, was annexed in 1963. During its early years, North Bay Village was primarily a haven for winter residents. Today, most of the residents are year round inhabitants.

Water Supply Planning

The text amendments in this adopted package have been transmitted pursuant to 2005 Growth Management Legislation. Chapter 163.3177(6)(c) of the Florida Statutes requires local governments to adopt a Water Supply Facilities Work Plan (Work Plan) into their Comprehensive Plan within 18 months after the jurisdictional Water Management District approves a Regional Water Supply Plan or its update. The *Lower East Coast Water Supply Plan (LECWSP) Update* was approved by the South Florida Water Management District (SFWMD) on February 15, 2007. Therefore, the deadline for local governments within the Lower East Coast jurisdiction to adopt a Work Plan was August 15, 2008.

The Work Plan is intended for local governments to identify and plan for water supply facilities and sources needed for existing and new development or population. The emphasis on the preparation of the Work Plan is to coordinate local comprehensive planning with the regional water supply plan, as well as promote coordination among local governments, the SFWMD, and water supply utilities within and across local government jurisdictions. The Work Plan should address the following, related to water supply planning: regional and local issues; current and projected population, water supply, and demand; Level of Service (LOS) standards; conservation and reuse; alternative water supplies (AWS); and capital improvement updates for implementation.

The Goals, Objectives, and Policies (GOPs) of a local government's Comprehensive Plan are required to reflect adoption and content of the Work Plan. The Infrastructure, Capital Improvements, Intergovernmental Coordination, Conservation, and Future Land Use Elements may need to be revised for consistency with water supply planning.

City of North Bay Village Work Plan

The Miami-Dade County Water and Sewer Department (MDWASD) provides potable water to the residents of the City of North Bay Village through a wholesale service agreement. The City Work Plan describes its service area relationship with the County, provides data and analysis on current and projected water supply and demand through 2030, and expresses the need to revise potable water Level of Service (LOS) standards and support the conservation and reuse initiatives identified in the County Work Plan. The County Work Plan was adopted by the Board of County Commissioners on April 24, 2008, and found in compliance by the Department of Community Affairs (DCA) on July 18, 2008.

Summary of Staff Analysis

Adopted amendment package #09-RWSP1 was adopted as proposed with a minor revision based on the January 6, 2009 Objections, Recommendations, and Comments (ORC) Report issued by the Department of Community Affairs (DCA). In response, the City adopted a new policy within the Intergovernmental Coordination Element to provide for further coordination on on-going water supply planning efforts with the City's Public Works Department, SFWMD, and Miami-Dade County.

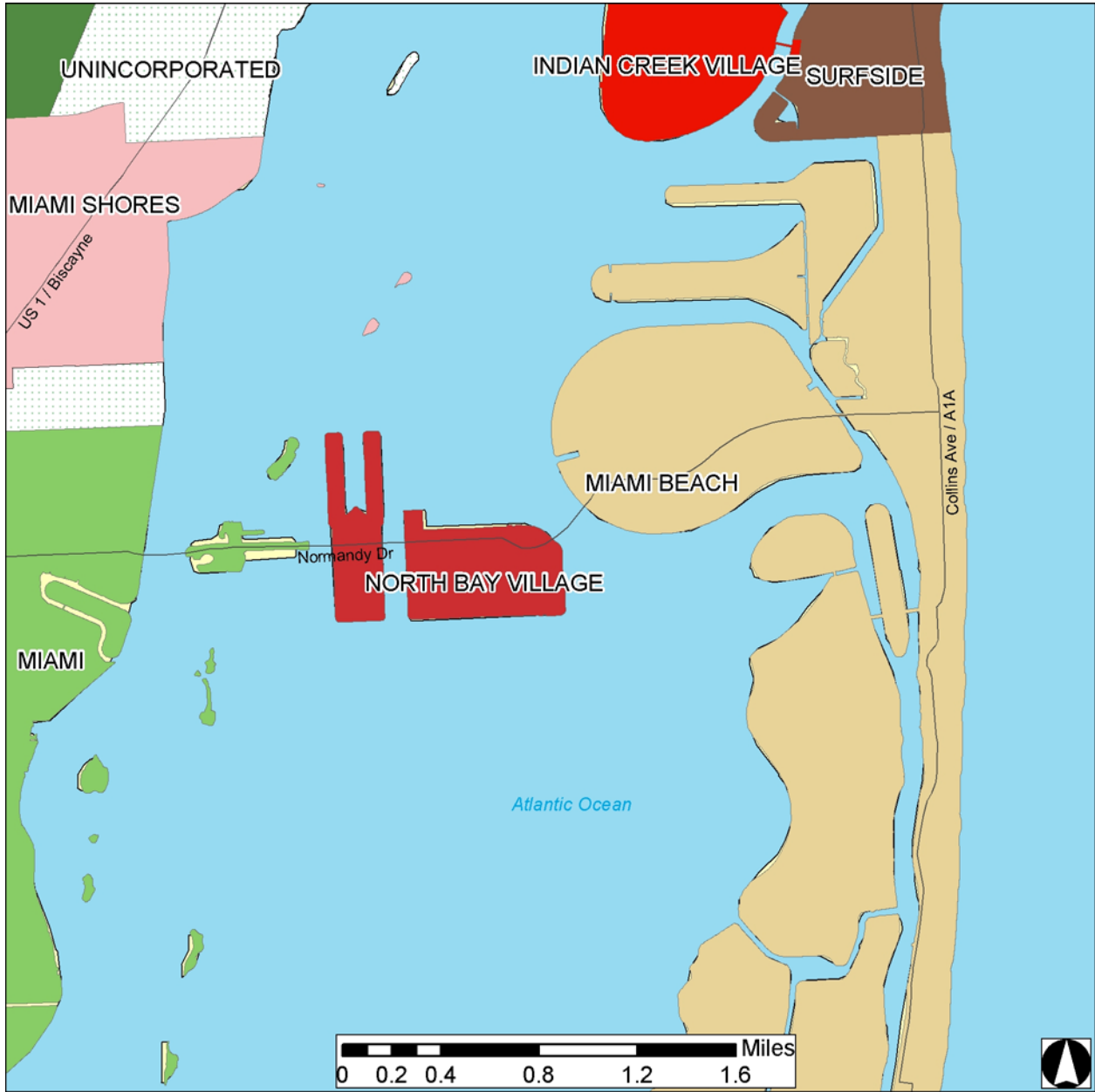
Staff analysis confirms that the adopted amendments are generally compatible with and supportive of the Goals and Policies of the *Strategic Regional Policy Plan for South Florida*.

The City of North Bay Village Commission unanimously (5-0) approved the adopted amendments at its March 10, 2009 meeting.

Recommendation

Find City of North Bay Village adopted amendment #09-RWSP1 generally consistent with the *Strategic Regional Policy Plan for South Florida (SRPP)*. Approve this staff report for transmittal to the Florida Department of Community Affairs.

Attachment 1



COMPREHENSIVE PLAN AMENDMENTS

Location Map

City of North Bay Village
Adopted Amendment #09-RWSP1

Sources: FDEP, SFWMD, Miami-Dade County, SFRPC.
Note: For planning purposes only. All distances are approximate.