



MEMORANDUM

AGENDA ITEM #4c

DATE: AUGUST 2, 2010

TO: EXECUTIVE COMMITTEE

FROM: STAFF

SUBJECT: CITY OF MIAMI BEACH PROPOSED COMPREHENSIVE PLAN AMENDMENT
DCA #10-RWSP1

Community Profile

Miami Beach is a city in eastern Miami-Dade County. The City was incorporated on March 26, 1915. Miami Beach has been one of America's most popular beach resort destinations for close to a century. The City is often referred to under the umbrella term of "Miami," despite being a distinct municipality, making Miami and Miami Beach two separate cities. As of the 2000 census, the City had a total population of 87,933. A 2009 population estimate for the City was 92,833, a 5.6% increase from the year 2000. Miami Beach boasts over seven miles of beaches, three golf courses, 20 parks, and is an island of just 7.1 square miles that separates Biscayne Bay from of the Atlantic Ocean. South Beach is one of the more popular areas of City, and was once a prime example of urban blight, with vacant buildings and a high crime rate. Today, it is considered one of the wealthiest commercial areas on the beach. A general location of the City is shown in Attachment 1.

Amendment Review

The South Florida Regional Planning Council (SFRPC) review of proposed Comprehensive Plan amendments for consistency with the *Strategic Regional Policy Plan for South Florida (SRPP)* primarily addresses effects on regional resources or facilities identified in the *SRPP* and extra-jurisdictional impacts that would be inconsistent with the Comprehensive Plan of the affected local government (§163.3184(5), Florida Statutes). The Council's review of amendments is conducted in two stages: (1) proposed or transmittal and (2) adoption. Council staff reviews the contents of the amendment package once the Department of Community Affairs certifies its completeness.

Objections and Comments relate to specific inconsistencies with relevant portions of the *SRPP*, which was adopted pursuant to Rule 29J-2.009, Florida Administrative Code. Council staff will work with local governments to address Objections and Comments identified during the review of a proposed amendment between the transmittal and the adoption of the amendment.

Summary of Staff Analysis

The City of Miami Beach proposed amendment package #10-RWSP1 has been transmitted pursuant to 2005 Growth Management Legislation that requires local governments adopt a Water Supply Facilities Work Plan (Work Plan) into their Comprehensive Plan within 18 months after the jurisdictional Water Management District approves a Regional Water Supply Plan or its update. The *Lower East Coast Water*

Supply Plan (LECWSP) Update was approved by the South Florida Water Management District (SFWMD) on February 15, 2007. Therefore, the deadline for local governments within the Lower East Coast jurisdiction to adopt a Work Plan was August 15, 2008.

The Work Plan is intended for local governments to identify and plan for water supply facilities and sources needed for existing and new development or population. The Goals, Objectives, and Policies (GOPs) of a local government's Comprehensive Plan are required to reflect adoption and content of the Work Plan. The Infrastructure, Capital Improvements, Intergovernmental Coordination, Conservation, and Future Land Use Elements may need to be revised for consistency with water supply planning.

Impact Analysis

Staff analysis confirms the City of Miami Beach proposed amendment package #10-RWSP1 is generally consistent with the *SRPP*.

The City of Miami Beach Commission unanimously approved (5-0) the proposed amendment on July 14, 2010.

The amendment review is detailed on the attached Form C-7, pursuant to the Department of Community Affairs (DCA) requirements for proposed Local Government Comprehensive Plan reviews.

Recommendation of Consistency with Strategic Regional Policy Plan (SRPP)

Find City of Miami Beach proposed amendment package #10-RWSP1 generally consistent with the *Strategic Regional Policy Plan for South Florida*. Approve this staff report for transmittal to the Florida Department of Community Affairs.

FORM C-7

SOUTH FLORIDA REGIONAL PLANNING COUNCIL
AMENDMENT REVIEW FORM
FY 2009-2010

1. Local Government Name: Miami Beach
2. Amendment Number: 10-RWSP1
3. Is the Regional Planning Council (RPC) precluded from commenting on the proposed Plan or Element pursuant to Section 163.3184(5) of the Florida Statutes (F.S.), or Rule 9J-11.0084, Florida Administrative Code (F.A.C); or commenting on the proposed amendment pursuant to s. 163.32465(4)(b), F.S.? No.
4. Date DCA Notified RPC that Amendment Package was Complete, if Applicable: Not received to date.
5. Date Amendment Review must be Completed and Transmitted to DCA: Not received to date.
6. Date the Amendment Review will be transmitted to DCA: August 6, 2010.
7. Description of the Amendment:

The City of Miami Beach Water Supply Facilities Work Plan (Work Plan) identifies the City as a wholesale customer of Miami-Dade County Water and Sewer Department (WASD). The City owns and maintains its own water distribution system. The Work Plan details the City's relationship with WASD and identifies that sufficient capacity exists to meet the needs of current and future residents; and includes general water supply infrastructure maintenance and repair projects as identified in the City's and County's Capital Improvements Schedule.

Key proposed changes to the City's Comprehensive Plan include:

- New Policy 1.7 of the Future Land Use Element directs the City to coordinate land uses and future land use changes with the availability of water supply and facilities through its Land Development Regulations.
- New Policy 1.4 of the Infrastructure Element identifies the City's potable water network as interconnected with Miami-Dade County, and therefore, will work with the County on updating its Work Plan and the preparation of a Water Conservation Plan; and new Policy 7.5 directs the City to keep the County informed of any immediate issues associated with water supply, conservation, and reuse. Policy 6.6 requires all future development to comply with Miami-Dade County Code of Ordinances regarding water use efficiency techniques and landscape standards. New Objective 8 "Water Supply Planning" and related Policies detail implementation strategies for ensuring adequate water supplies and facilities are available to serve the City's population and provide for consistency with the City and County Work Plan.
- Water resources is to be included as a natural protected resource in the Conservation/Coastal Management Element. New Objective 13 and related Policies detail implementation strategies for ensuring adequate water supplies and facilities are available to serve the City's population and provide for consistency with the Work Plan.

- New Policies 1.8 and 1.9 in the Intergovernmental Coordination Element provide for water supply concurrency (prior to the issuance of a building permit) and coordination all potable water and sanitary sewer planning with the appropriate County departments and the South Florida Water Management District (SFWMD).
- New Policies 2.4 and 2.5 in the Capital Improvements Element direct the City to provide for water supply concurrency and incorporate applicable City, County, and SFWMD capital projects related to water supply into the City's Capital Improvements Schedule.

8. Is the Amendment consistent with the Strategic Regional Policy Plan (SRPP)?

Staff analysis confirms the City of Miami Beach proposed amendment package #10-RWSP1 is generally consistent with the SRPP.

9. Applicable Strategic Regional Policy Plan Goals and Objectives: *Not Applicable.*

10. The effects on the Proposed Amendment on Regional Resources or Facilities Identified in the Strategic Regional Policy Plan: *Not Applicable.*

11. Extra-Jurisdictional Impacts that would be Inconsistent with the Comprehensive Plan of the Affected Local Government: *Not Applicable.*

12. Compatibility among local plans including, but not limited to, land use and compatibility with military bases: *Not Applicable.*

13. Impacts to significant regional resources and facilities identified in the Strategic Regional Policy Plan, including, but not limited to, impacts on groundwater recharge and the availability of water supply: *Not Applicable.*

14. Affordable housing issues and designation of adequate sites for affordable housing: *Not Applicable.*

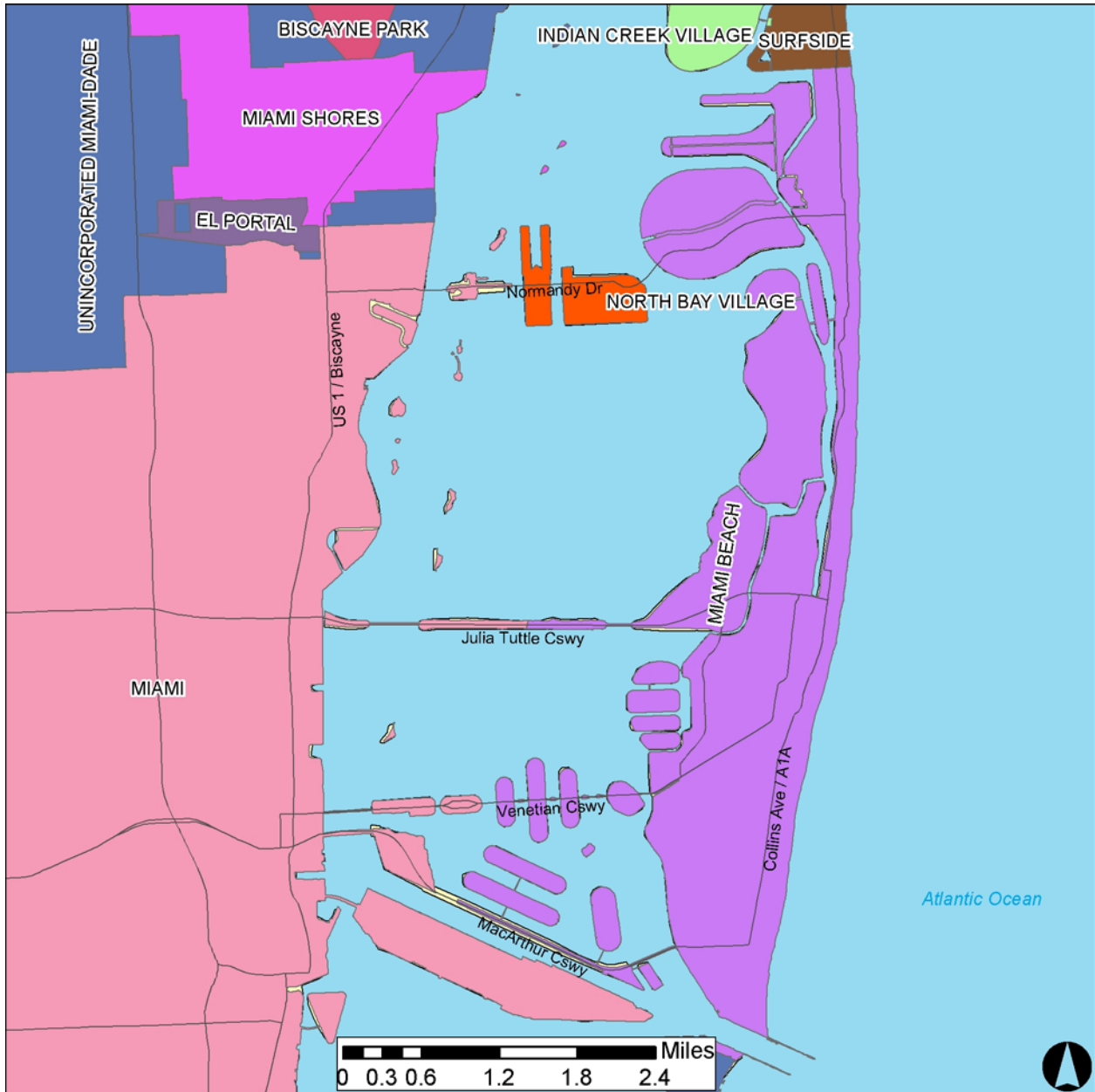
15. Protection of natural resources of regional significance identified in the Strategic Regional Policy Plan including, but not limited to, protection of spring and groundwater resources, and recharge potential: *Not Applicable.*

16. Compatibility with regional transportation corridors and facilities including, but not limited to, roadways, seaports, airports, public transportation systems, high speed rail facilities, and intermodal facilities: *Not Applicable.*

17. Adequacy and compatibility with emergency preparedness plans and local mitigation strategies including, but not limited to, the impacts on and availability of hurricane shelters, maintenance of county hurricane clearance times, and hazard mitigation: *Not Applicable.*

18. Analysis of the effects of extra-jurisdictional impacts which may be created by the amendment: *Not Applicable.*

Attachment 1



COMPREHENSIVE PLAN AMENDMENTS

General Location Map

City of Miami Beach
Proposed Amendment #10-RWSP1

Sources: FDEP, SFWMD, Miami-Dade County, SFRPC.

Note: For planning purposes only. All distances are approximate.