



# MEMORANDUM

AGENDA ITEM #6d

---

DATE: DECEMBER 1, 2008

TO: COUNCIL MEMBERS

FROM: STAFF

SUBJECT: CITY OF NORTH BAY VILLAGE PROPOSED COMPREHENSIVE PLAN AMENDMENT

---

## Introduction

On November 3, 2008 Council staff received proposed plan amendment #09-RWSP1 to the City of North Bay Village Comprehensive Plan for review of consistency with the *Strategic Regional Policy Plan for South Florida (SRPP)*. Staff review is undertaken pursuant to the Local Government Comprehensive Planning and Land Development Regulation Act, Chapter 163, Part II, Florida Statutes (F.S.), and Rules 9J-5 and 9J-11, Florida Administrative Code (F.A.C.).

## Community Profile

The City of North Bay Village is a three-island community situated in northeast Miami-Dade County between the cities of Miami and Miami Beach. The three islands, North Bay Island, Harbor Island and Treasure Island, are linked by the John F. Kennedy (79th Street) Causeway, which extends across Biscayne Bay from Miami to Miami Beach. The City has excellent access to major airports, beaches, downtown Miami and Broward County via I-95 and 79th Street. North Bay Village was incorporated in 1945 and the population in 2007 was estimated to be 5,736, a decrease of 15 percent since the year 2000. Prior to 1940 most of what is now North Bay Village lay beneath the water of Biscayne Bay. In 1940 dredging and bulk-heading created North Bay Island. During the mid-40s dredging and filling created Harbor Island and Treasure Island, which were annexed by North Bay Village several years later. Broadcast Key, also known as Cameo Island was annexed in 1963. During its early years North Bay Village was primarily a haven for winter residents. Today, most of the residents are year round inhabitants.

Additional information regarding the City or the Region may be found the Council's website a [www.sfrpc.com](http://www.sfrpc.com).

## Summary of Staff Analysis

Proposed amendment #09-RWSP1 includes amendments to the Sanitary Sewer, Solid Waste, Drainage, Potable Water and Natural Groundwater Aquifer Recharge, Coastal Management, Conservation, Intergovernmental Coordination, and Capital Improvements Elements of the City of North Bay Village Comprehensive Plan related to water supply planning. The general location of the City is shown in Attachment 1. A summary of the proposed amendments in this package follows.

## **Water Supply Planning**

The text amendments in this proposed package have been transmitted pursuant to 2005 Growth Management legislation. Chapter 163.3177(6)(c) of the Florida Statutes requires local governments to adopt a Water Supply Facilities Work Plan (Work Plan) into their comprehensive plan within 18 months after the jurisdictional water management district approves a regional water supply plan or its update. The *Lower East Coast Water Supply Plan (LECWSP) Update* was approved by the South Florida Water Management District (SFWMD) on February 15, 2007. Therefore, the deadline for local governments within the Lower East Coast jurisdiction to adopt a Work Plan was August 15, 2008.

The Work Plan is intended for local governments to identify and plan for water supply facilities and sources needed for existing and new development or population. The emphasis on the preparation of the Work Plan is to coordinate local comprehensive planning with the regional water supply plan, as well as promote coordination among local governments, the SFWMD, and water supply utilities within and across local government jurisdictions. The Work Plan should address the following related to water supply planning: regional and local issues; current and projected population, water supply, and demand; Level of Service (LOS) standards; conservation and reuse; alternative water supplies (AWS); and capital improvement updates for implementation.

The Goals, Objectives, and Policies (GOPs) of a local government's Comprehensive Plan are required to reflect adoption and content of the Work Plan. The Infrastructure, Capital Improvements, Intergovernmental Coordination, Conservation, and Future Land Use Elements may need to be revised for consistency of water supply planning.

A summary analysis of the City of North Bay Village proposed 10-Year Water Supply Facilities Work Plan (Work Plan) and related text amendments follow.

### Work Plan

The Miami-Dade County Water and Sewer Department (MDWASD) provides potable water to the residents of North Bay Village through a wholesale service agreement. In addition, MDWASD serves approximately 90 percent of County residents within the Urban Development Boundary (UDB). Since the City is dependent upon MDWASD for current and future water supply needs, the City's Work Plan has been drafted for consistency with the Miami-Dade County Water Supply Facilities Work Plan (2008). The County's Work Plan was adopted by the Board of County Commissioners on April 24, 2008 and found in compliance by the Department of Community Affairs (DCA) on July 18, 2008.

The City's Work Plan describes its service area relationship with the County, provides data and analysis on current and projected water supply and demand through 2030, and expresses the need to revise potable water Level of Service (LOS) standards and support the conservation and reuse initiatives identified in the County Work Plan.

### Sanitary Sewer, Solid Waste, Drainage, Potable Water and Natural Groundwater Aquifer Recharge Element

The key proposed changes to this element include provisions to:

- Ensure adequate water supplies will be available to serve new development before the issuance of development orders or permits;
- Promote water conservation through building code regulations, city ordinance, and education programs; and
- Cooperate with the County and SFWMD in the effort of water conservation.

### Coastal Management and Conservation Elements

The key proposed changes to these elements include new policies to ensure that any new regulation to protect water resources and policies or projects related to stormwater management, aquifer recharge, and water reuse are consistent with SFWMD regulation, the *LECWSP*, and the Miami-Dade County Work Plan.

#### Intergovernmental Coordination Element

The key proposed changes to this element include new policies to update the City's Work Plan within 18 months of approval of the *LECWSP*, ensure adequate water supplies will be available to serve new development, and actively participate in the *LECWSP* update and other water supply development related initiatives.

#### Capital Improvements Element

The key proposed changes to this element include:

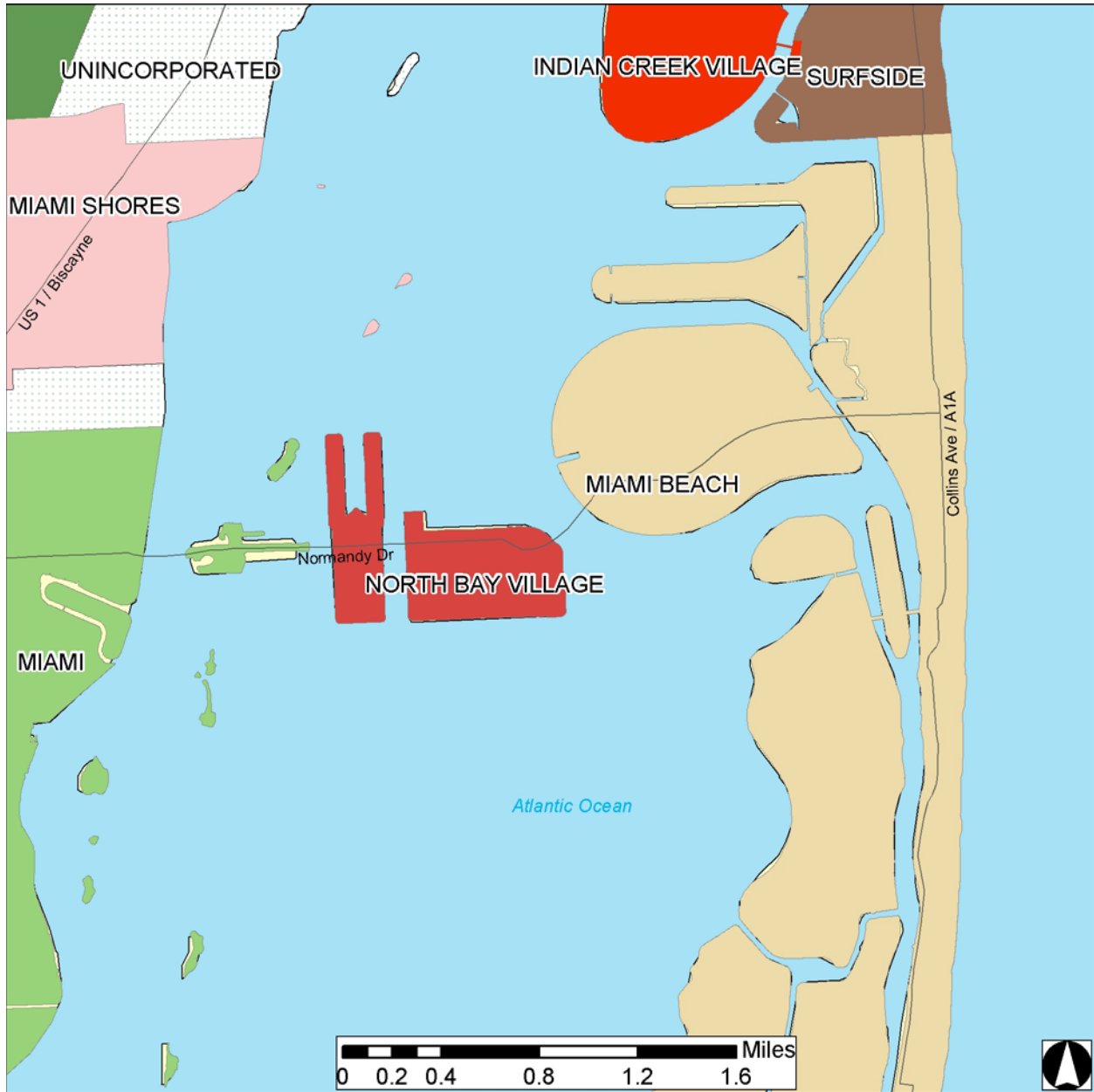
- A revision to the potable water LOS standard from 120 gallons per day per capita (gpd) to 150 gpd, consistent with the County Work Plan;
- Provisions to maintain the City's demand for potable water at sustainable levels; and
- Coordinate with Miami-Dade County and assist in the implementation of water supply related capital improvements projects.

The City of North Bay Village Commission unanimously approved the transmittal of the proposed amendment at its October 14, 2008 meeting.

#### Recommendation

Find the City of North Bay Village proposed amendment package #09-RWSP1 generally consistent with the *Strategic Regional Policy Plan for South Florida (SRPP)*. Approve this staff report for transmittal to the Florida Department of Community Affairs.

# Attachment 1



## COMPREHENSIVE PLAN AMENDMENTS

### Location Map

North Bay Village  
Proposed Amendment #09-RWSP1

Sources: SFWMD, Miami-Dade County, SFRPC.

Note: For planning purposes only. All distances are approximate.