



# MEMORANDUM

AGENDA ITEM #7b

---

DATE: MAY 4, 2009

TO: COUNCIL MEMBERS

FROM: STAFF

SUBJECT: CITY OF WILTON MANORS ADOPTED COMPREHENSIVE PLAN AMENDMENT

---

## Introduction

On March 27, 2009, Council staff received adopted plan amendment #09-RWSP1 (previously #08-RWSP1) to the City of Wilton Manors Comprehensive Plan for review of consistency with the *Strategic Regional Policy Plan for South Florida (SRPP)*. The proposed amendment was reviewed at the October 6, 2008 Council meeting and found to be generally consistent with the *SRPP*. Staff review is undertaken pursuant to the Local Government Comprehensive Planning and Land Development Regulation Act, Chapter 163, Part II, Florida Statutes (F.S.), and Rules 9J-5 and 9J-11, Florida Administrative Code (F.A.C.).

## Community Profile

The City of Wilton Manors is located in Broward County, Florida, just north of downtown Fort Lauderdale and is approximately two square miles in area. The City was incorporated in 1947 and has been referred to as the "Island City" because its boundaries primarily follow the North and South Forks of the Middle River. It is bordered on the north by the North Fork of the Middle River and the City of Oakland Park; to the south, the boundaries include the South Fork of the Middle River and the City of Fort Lauderdale; the eastern terminus of the City extends to near Federal Highway (US1); and the western most boundary reaches Interstate 95. The Village of Lazy Lake is contained within the borders of Wilton Manors. The City is primarily residential in nature with some commercial, industrial, governmental, and recreational/water uses. The City of Wilton Manors is substantially built-out. The City's population was 12,929 in 2008, a 1.8 percent increase in population from the year 2000. A general location of the City is shown in Attachment 1.

## **Water Supply Planning**

The text amendments in this adopted package have been transmitted pursuant to 2005 Growth Management Legislation. Chapter 163.3177(6)(c) of the Florida Statutes requires local governments to adopt a Water Supply Facilities Work Plan (Work Plan) into their Comprehensive Plan within 18 months after the jurisdictional Water Management District approves a Regional Water Supply Plan or its update. The *Lower East Coast Water Supply Plan (LECWSP) Update* was approved by the South Florida Water Management District (SFWMD) on February 15, 2007. Therefore, the deadline for local governments within the Lower East Coast jurisdiction to adopt a Work Plan was August 15, 2008.

The Work Plan is intended for local governments to identify and plan for water supply facilities and sources needed for existing and new development or population. The emphasis on the preparation of the Work Plan is to coordinate local comprehensive planning with the regional water supply plan, as well as promote coordination among local governments, the SFWMD, and water supply utilities within and across local government jurisdictions. The Work Plan should address the following, related to water supply planning: regional and local issues; current and projected population, water supply, and demand; Level of Service (LOS) standards; conservation and reuse; alternative water supply (AWS); and capital improvement updates for implementation.

The Goals, Objectives, and Policies (GOPs) of a local government's Comprehensive Plan are required to reflect adoption and content of the Work Plan. The Infrastructure, Capital Improvements, Intergovernmental Coordination, Conservation, and Future Land Use Elements may need to be revised for consistency with water supply planning.

#### City of Wilton Manors Work Plan

The City of Fort Lauderdale's Department of Public Works and Water Services Division provides potable water to the residents and businesses of Wilton Manors through a retail service agreement. Fort Lauderdale also provides water to its own residents and businesses, portions of the cities of Oakland Park and Tamarac, Broward County, Port Everglades, and a Florida Department of Transportation's toll booth. Since the City of Wilton Manors is dependent upon the City of Fort Lauderdale for current and future water supply needs, the Wilton Manors Work Plan has been drafted for consistency with the Fort Lauderdale Work Plan (which was found in compliance by the Department of Community Affairs [DCA] on April 10, 2009). The Work Plan describes the City's service area relationship with Fort Lauderdale, provides data and analysis on current and projected water supply and demand through 2025, and supports the conservation and reuse initiatives identified in the Fort Lauderdale Work Plan.

#### Summary of Staff Analysis

Adopted amendment package #09-RWSP1 was adopted as proposed with revisions based on the November 26, 2008 Objections, Recommendations, and Comments (ORC) Report issued by the DCA. In response, the City revised Intergovernmental Coordination Element Policies to require coordination with the City of Fort Lauderdale to ensure adequate water supply facilities are available to serve City needs and with the SFWMD to ensure the City's Work Plan is updated within 18 months of a *LECWSP Update*. The Infrastructure Element now includes implementation strategies for short and long-term conservation measures and programs and ensures water supply concurrency. A new Policy to the Future Land Use Element adopts the City of Fort Lauderdale Work Plan and related capital improvements projects by reference.

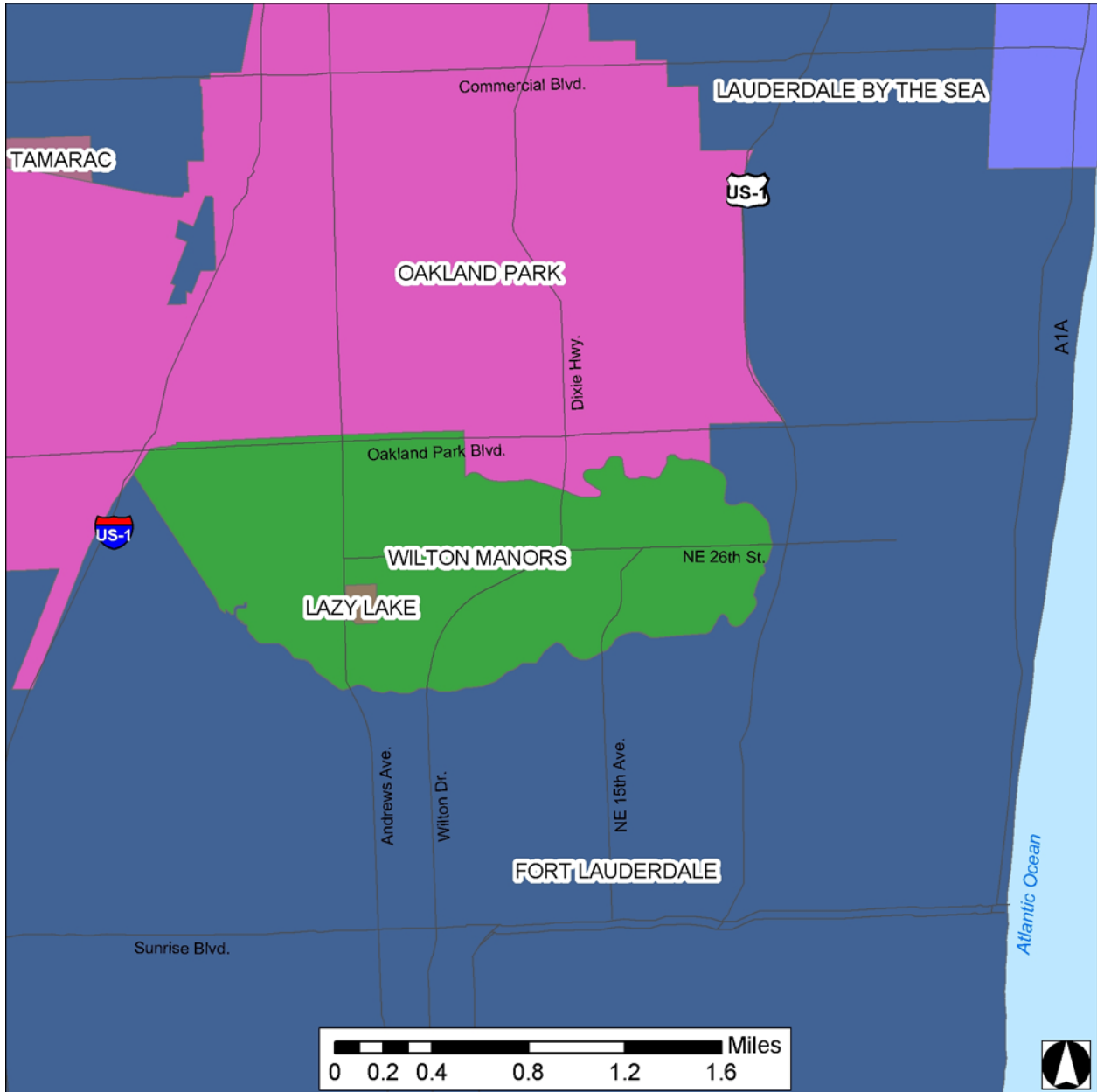
Staff analysis confirms that the adopted amendments are generally compatible with and supportive of the Goals and Policies of the *Strategic Regional Policy Plan for South Florida*.

The City of Wilton Manors Commission unanimously approved (5-0) the transmittal of the adopted amendments at its March 10, 2009 meeting.

#### Recommendation

Find City of Wilton Manors adopted amendment #09-RWSP1 generally consistent with the *Strategic Regional Policy Plan for South Florida (SRPP)*. Approve this staff report for transmittal to the Florida Department of Community Affairs.

Attachment 1



COMPREHENSIVE PLAN AMENDMENTS

Location Map

City of Wilton Manors  
Adopted Amendment #09-RWSP1

Sources: Broward County, SFRPC.

Note: For planning purposes only. All distances are approximate.