

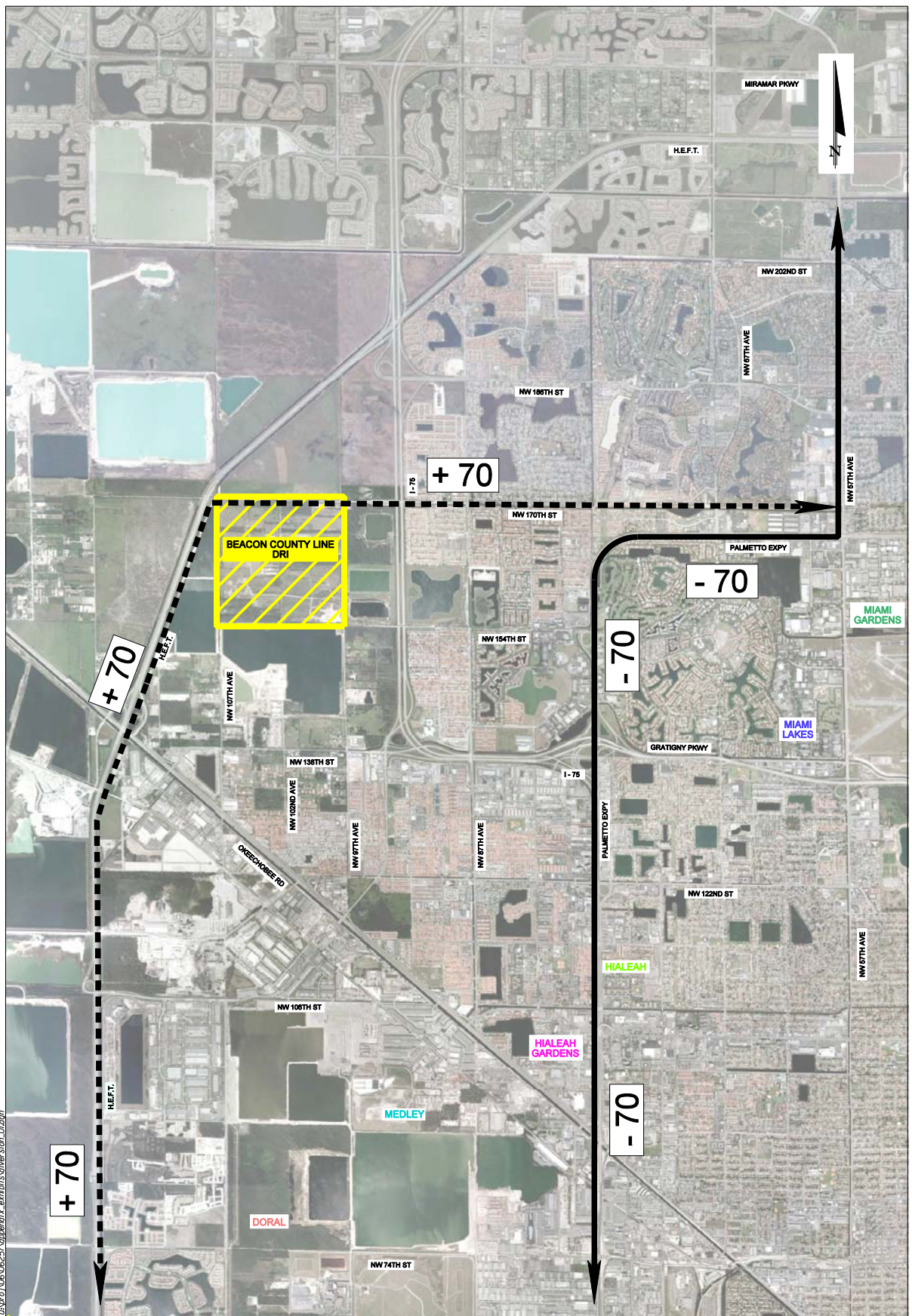
APPENDIX 21-5 (R)
Traffic Diversions Documentation

Revised July 2008

APPENDIX 21-5 (R)
DIVERSIONS DOCUMENTATION

The 2018 transportation model was run with and without the interchange without Beacon Countyline DRI to determine shifts in traffic pattern resulting from the construction of an interchange at NW 170 Street and the Homestead Extension of the Florida Turnpike (HEFT). Diversions were cautiously taken to not overestimate the benefits of the proposed interchange. The following changes in patterns were observed:

1. Increase in traffic was observed on NW 170 Street west of NW 67 Avenue, while decreases were observed along SR 826. 70 vph were rerouted to/from SR 826 through NW 170 Street with the intent to travel to/from the south on HEFT. The exhibit labeled ***Diversion 1*** graphically portrays this diversion.
2. Decreases in volumes were observed at Miami Gardens Drive (MGD) west of NW 87 Avenue, at the MGD/I-75 ramps and along I-75 from MGD to NW 138 Street, Beacon Station Boulevard, NW 106 Street and the HEFT ramps to the south. A total of 40 vph were re-routed through NW 170 Street and ultimately HEFT south (see ***Diversion 2*** exhibit).
3. Decreases in volumes were observed along Okeechobee Road and its Frontage Road, as well as the Okeechobee Road ramps to HEFT, while volumes increased along NW 97 Avenue and NW 170 Street to the interchange. 35 vph were re-routed from Okeechobee and the Frontage Road through NW 97 Avenue north, NW 170 Street west and north on HEFT (see ***Diversion 3*** exhibit).
4. Large decreases in volumes not entirely addressed in Diversion 3 above were observed at the HEFT/Okeechobee Road interchange, while significant volume decreases were observed along NW 138 Street between I-75 and Okeechobee Road. A total of 160 vph were rerouted, which were originally traveling west on NW 138 Street, gaining access to Okeechobee Road and then accessing HEFT to/from the north. These vehicles were rerouted north of NW 97 Avenue, west on NW 170 Street and gaining access to/from the north on HEFT (see ***Diversion 4*** exhibit).

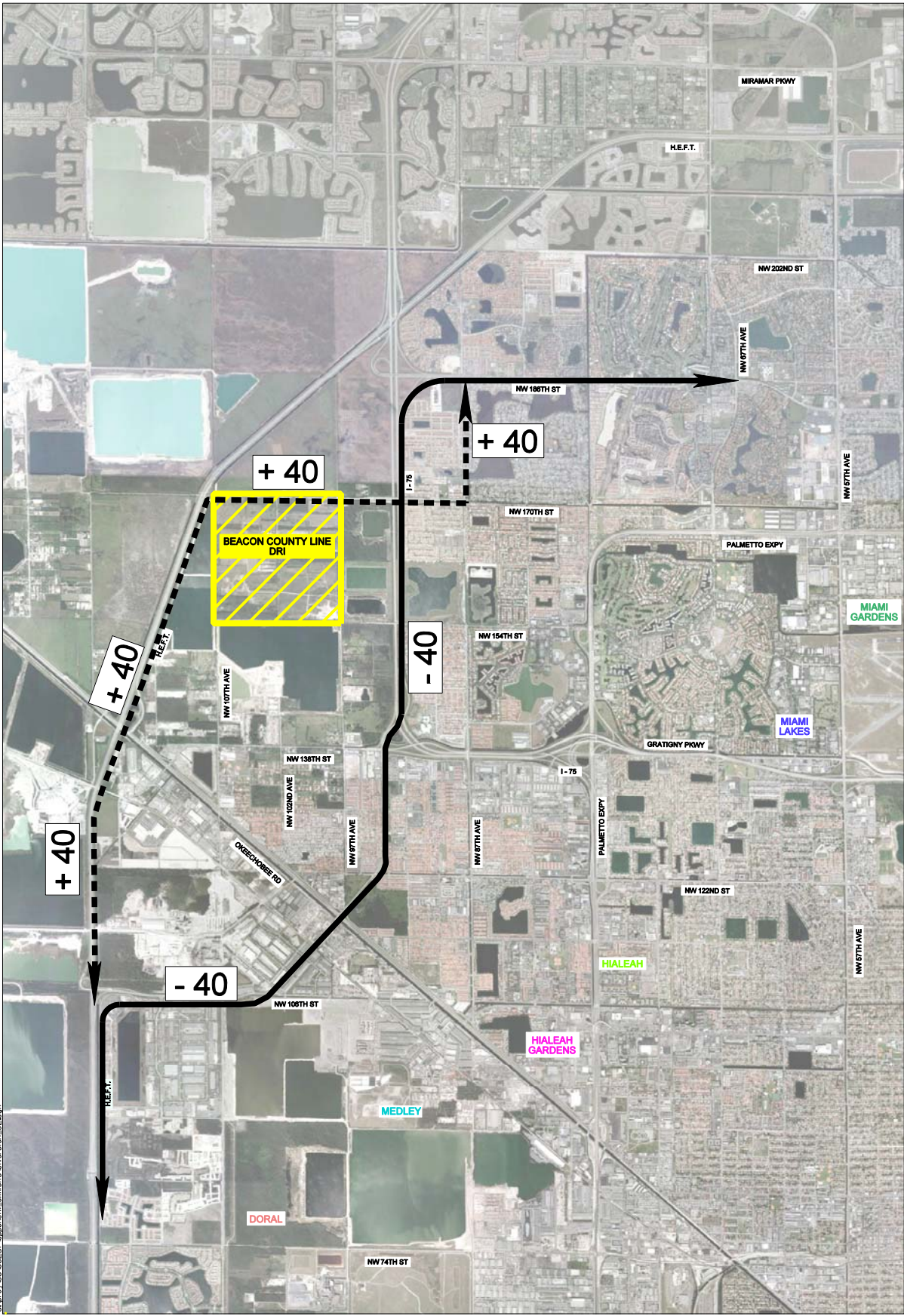


Source: David Plummer & Associates

Diversion 1

Revised July 2008

Beacon County Line DRI

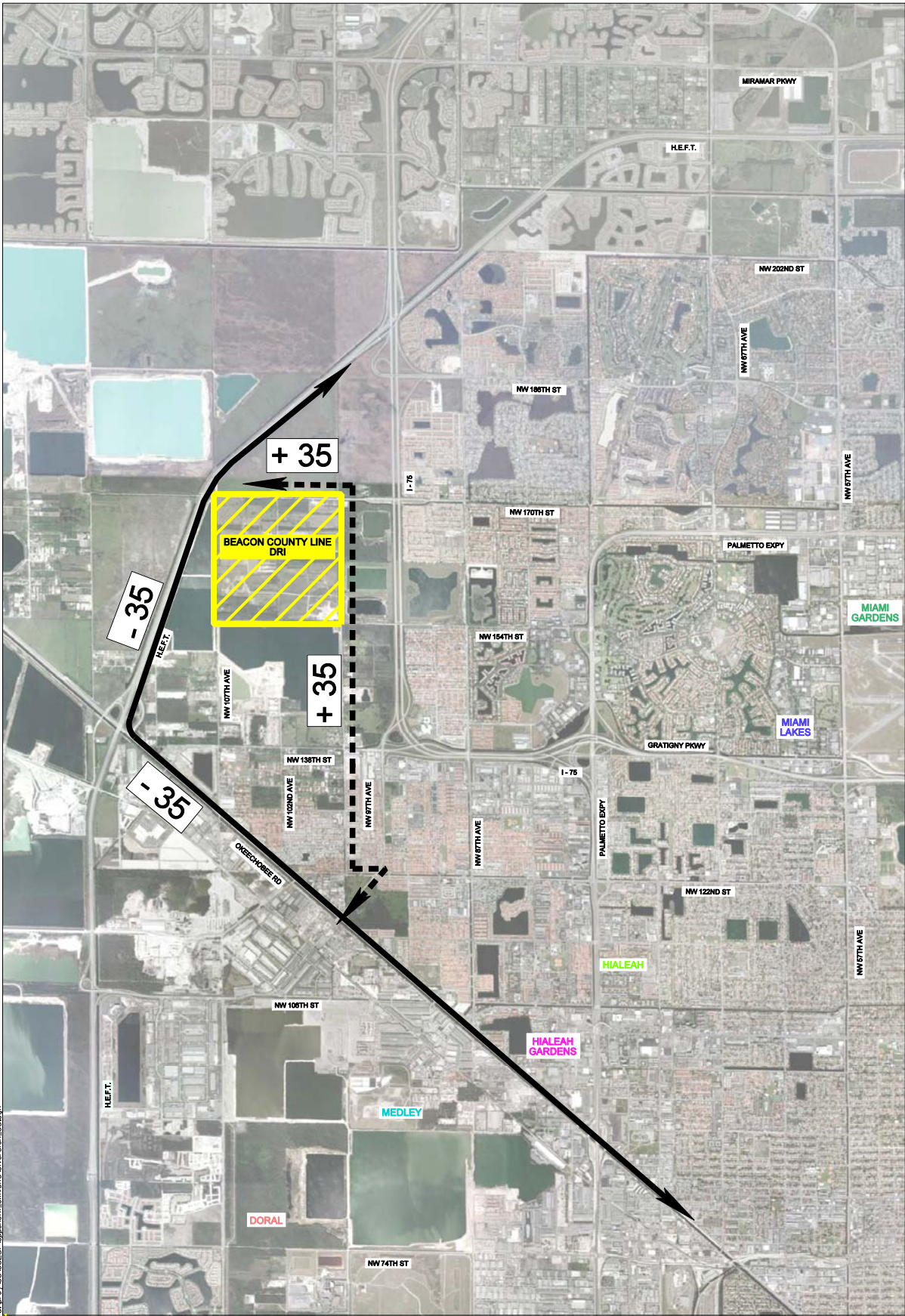


Source: David Plummer & Associates

Diversion 2

Revised July 2008

Beacon County Line DRI



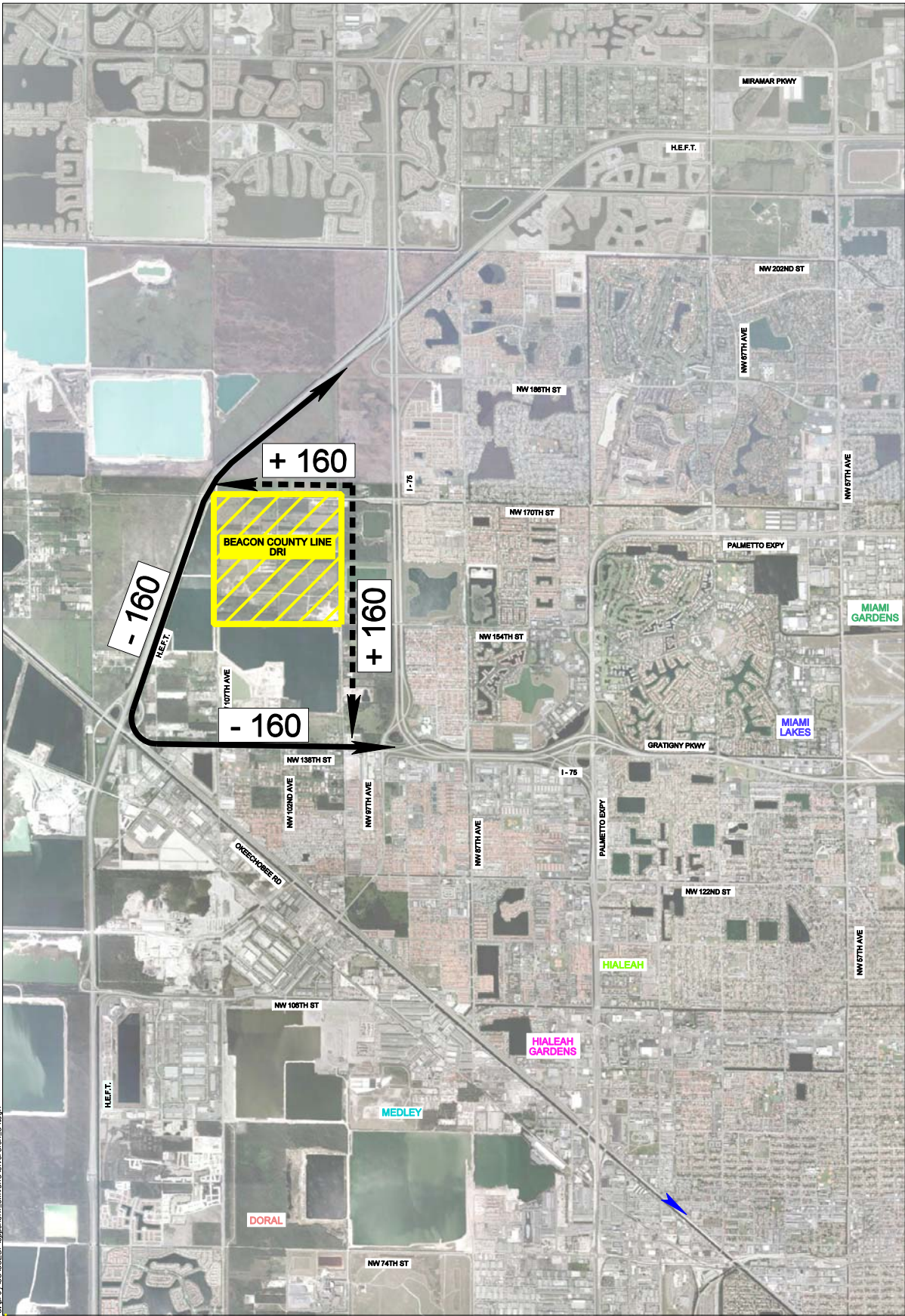
LA00010606257\appendix_exhibits\diversion_03.dwg

Source: David Plummer & Associates

Diversion 3

Revised July 2008

Beacon County Line DRI

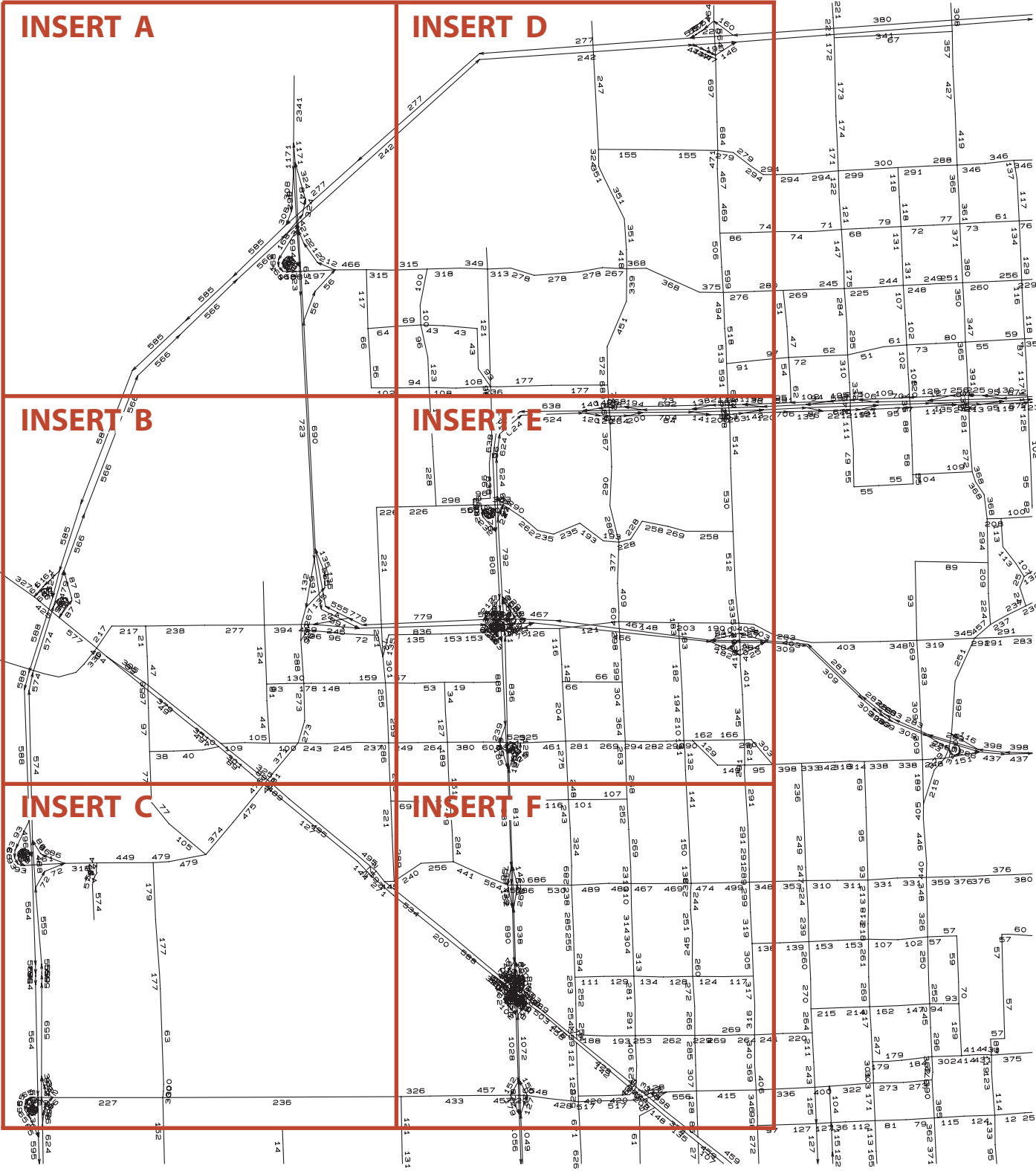


Source: David Plummer & Associates

Diversion 4

Revised July 2008

Beacon County Line DRI



INSERT A

INSERT D

INSERT B

INSERT E

INSERT C

INSERT F

Miami

Beacon County DRI w/ 170 Int w/ Proj (Diversion) - #06257
PLOT HIGHWAY LOAD -- TWO-WAY LINK VOLUMES
(IN HUNDREDS)
27MAR08 11: 12: 51

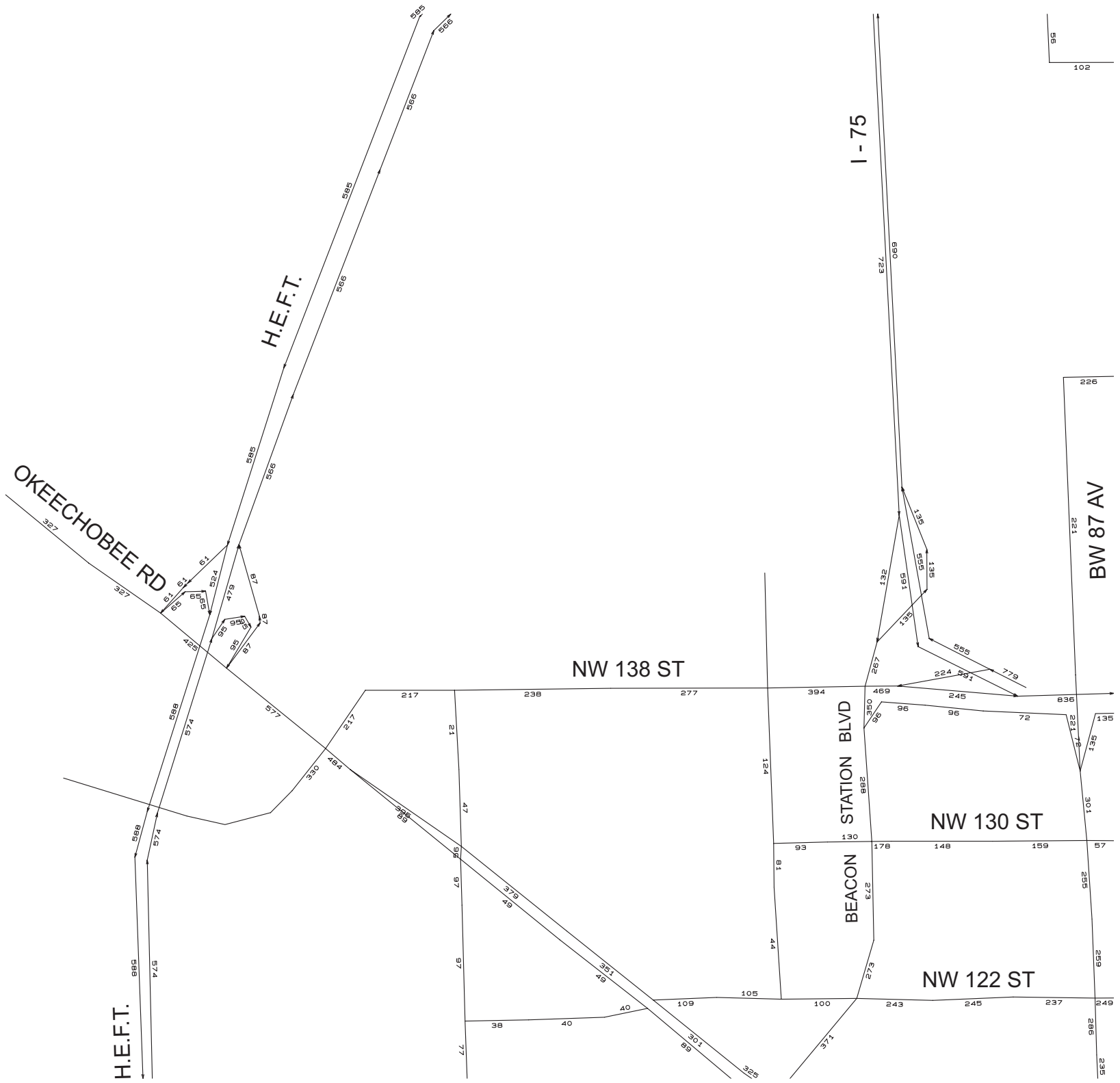


INSERT A

Miami
Beacon County DRI WO 170 Int WO Proj (Diversion) - #06257
PLOT HIGHWAY LOAD -- TWO-WAY LINK VOLUMES
27MAR08 11:13:16
(IN HUNDREDS)

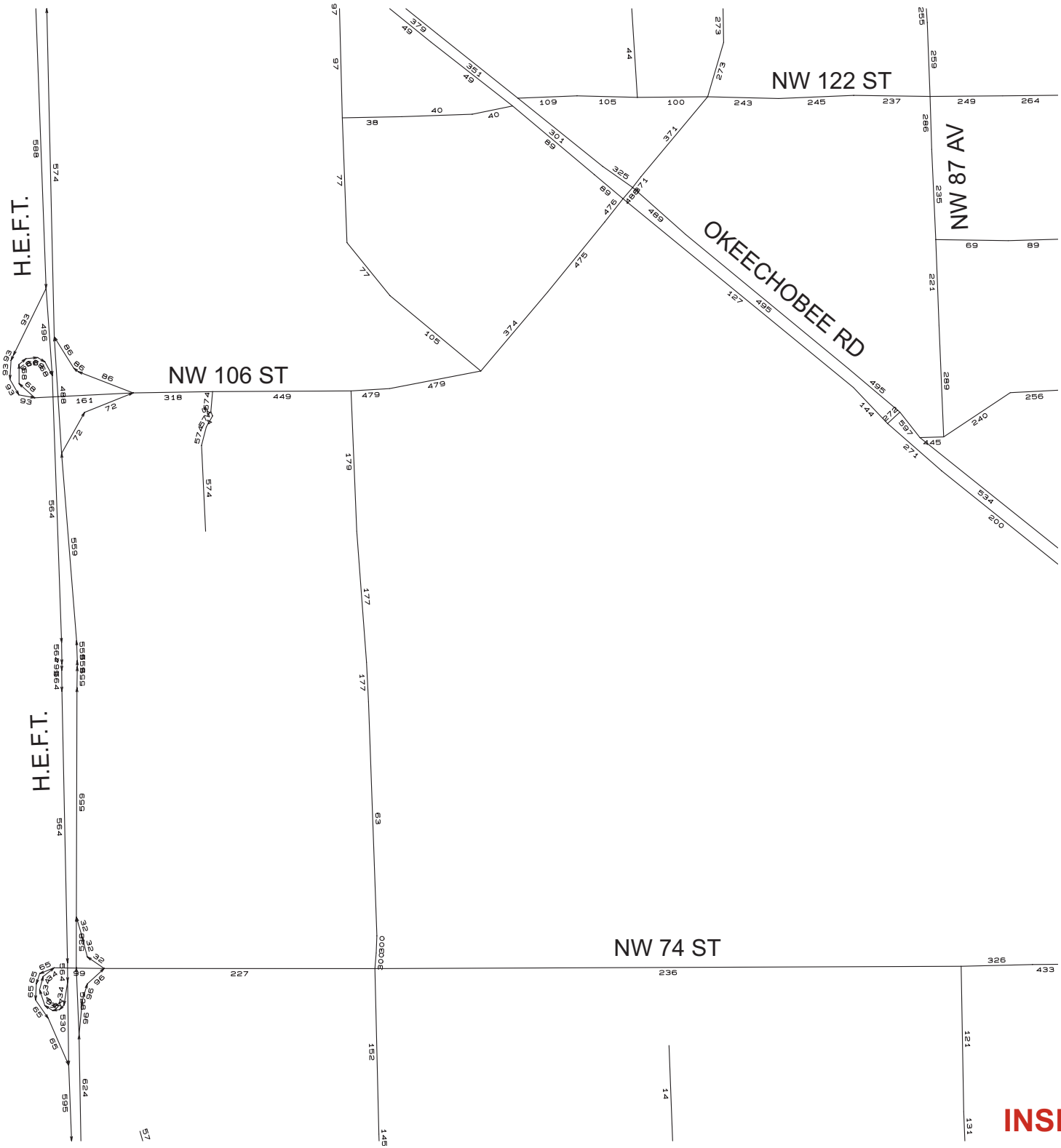


56
102



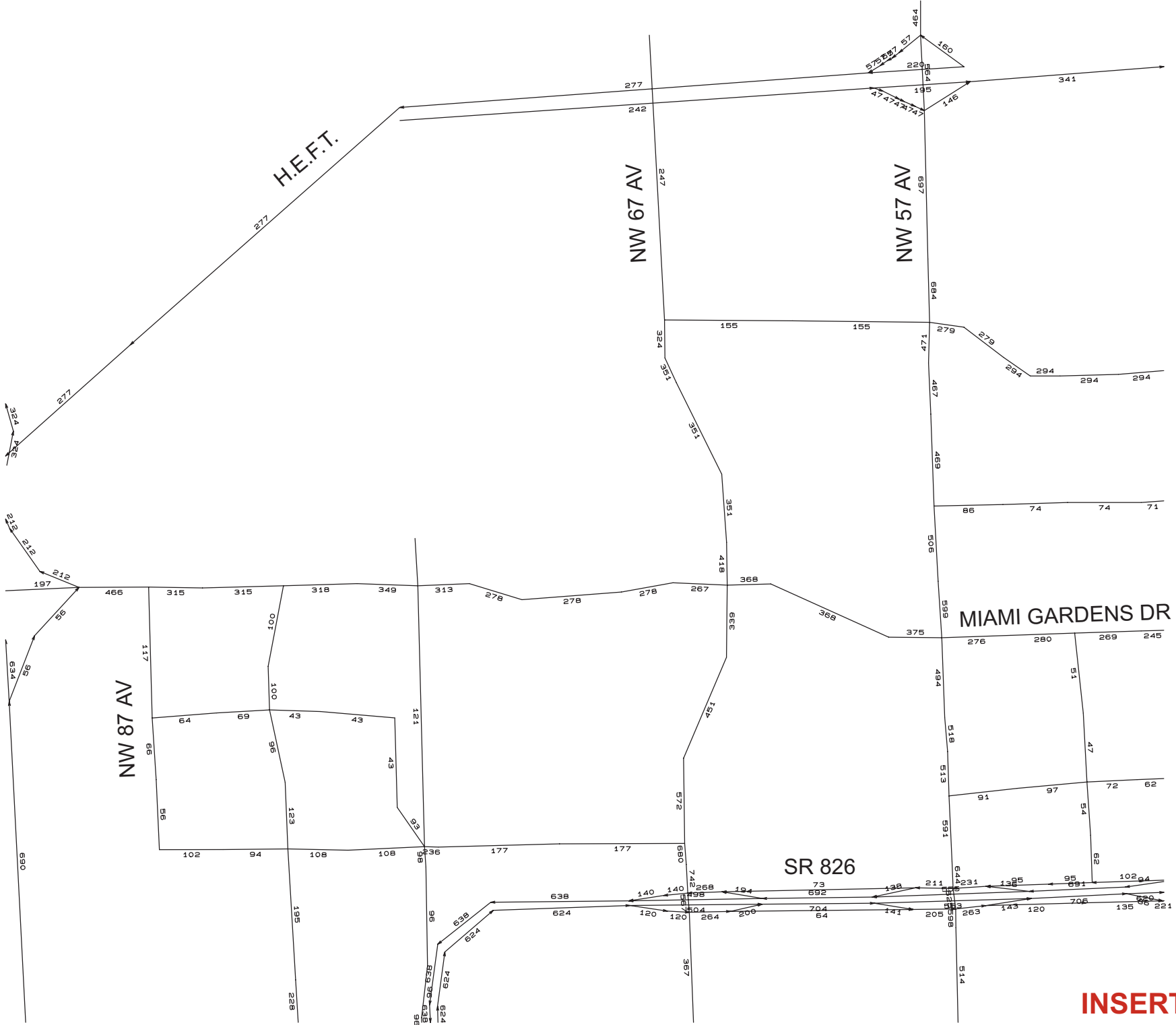
INSERT B

Miami
 Beacon County DRI w/ 170 Int w/ Proj (Diversions) - #06257
 PLOT HIGHWAY LOAD -- TWO-WAY LINK VOLUMES
 (IN HUNDREDS)
 27MAR08 11: 14: 27



INSERT C

Miami Beacon County DRI wo 170 Int wo Proj (Diversions) - #06257
PLOT HIGHWAY LOAD -- TWO-WAY LINK VOLUMES
(IN HUNDREDS)
27MAR08 11: 15: 24



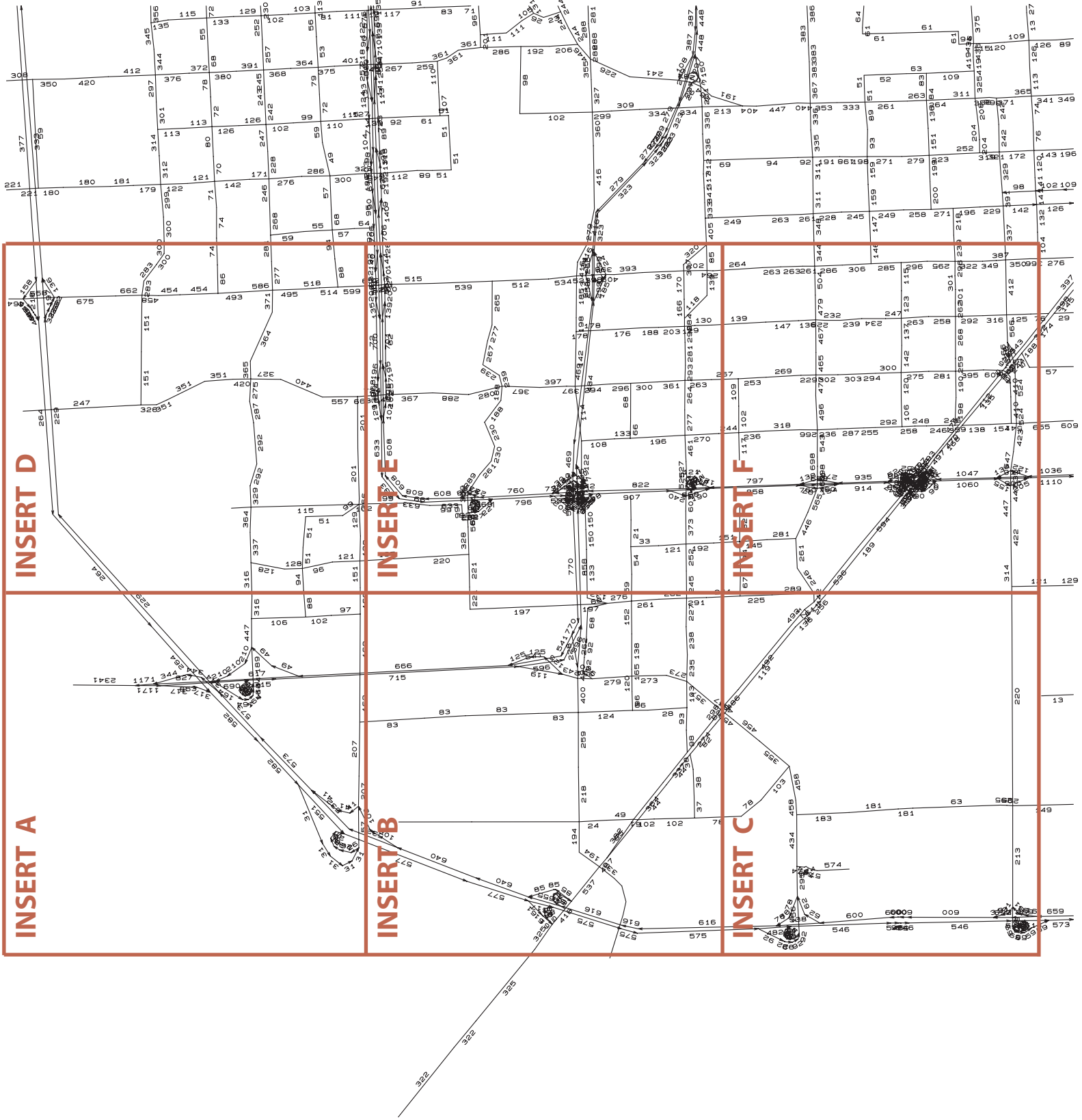
INSERT D

Miami
 Beacon County DRI w/ 170 Int w/ Proj (Diversion) - #06257
 PLOT HIGHWAY LOAD -- TWO-WAY LINK VOLUMES
 (IN HUNDREDS)
 26MAR08 16: 48: 46



INSERT E

Miami
Beacon County DRI wo 170 Int wo Proj (Diversion) - #06257
PLOT HIGHWAY LOAD -- TWO-WAY LINK VOLUMES
(IN HUNDREDS)
27MAR08 11: 13: 58



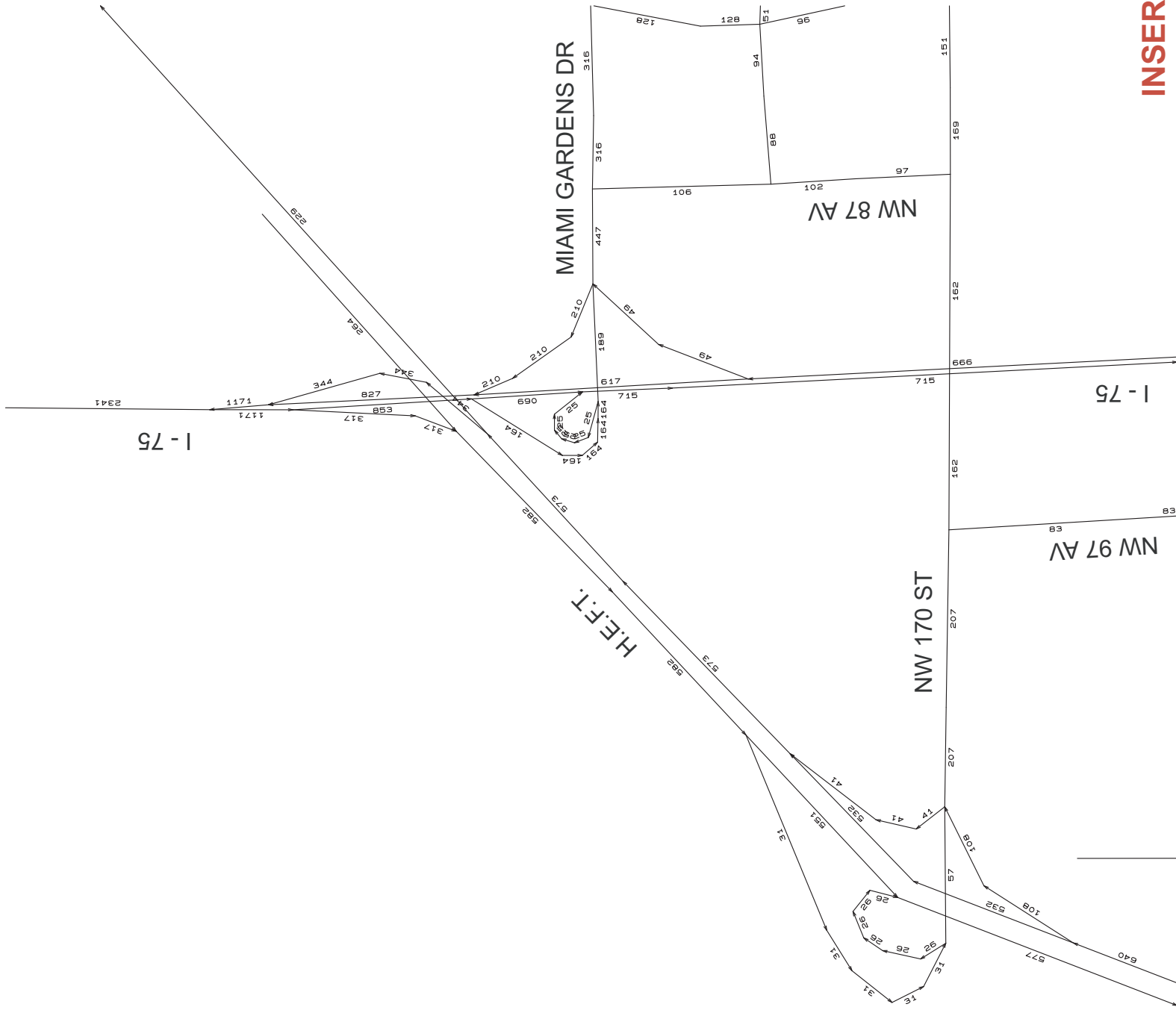
Miami

Beacon County DRI (w 170 Int wo Proj) - #06257
 PLOT HIGHWAY LOAD -- TWO-WAY LINK VOLUMES
 (IN HUNDREDS)

28MAY08 09: 53: 14



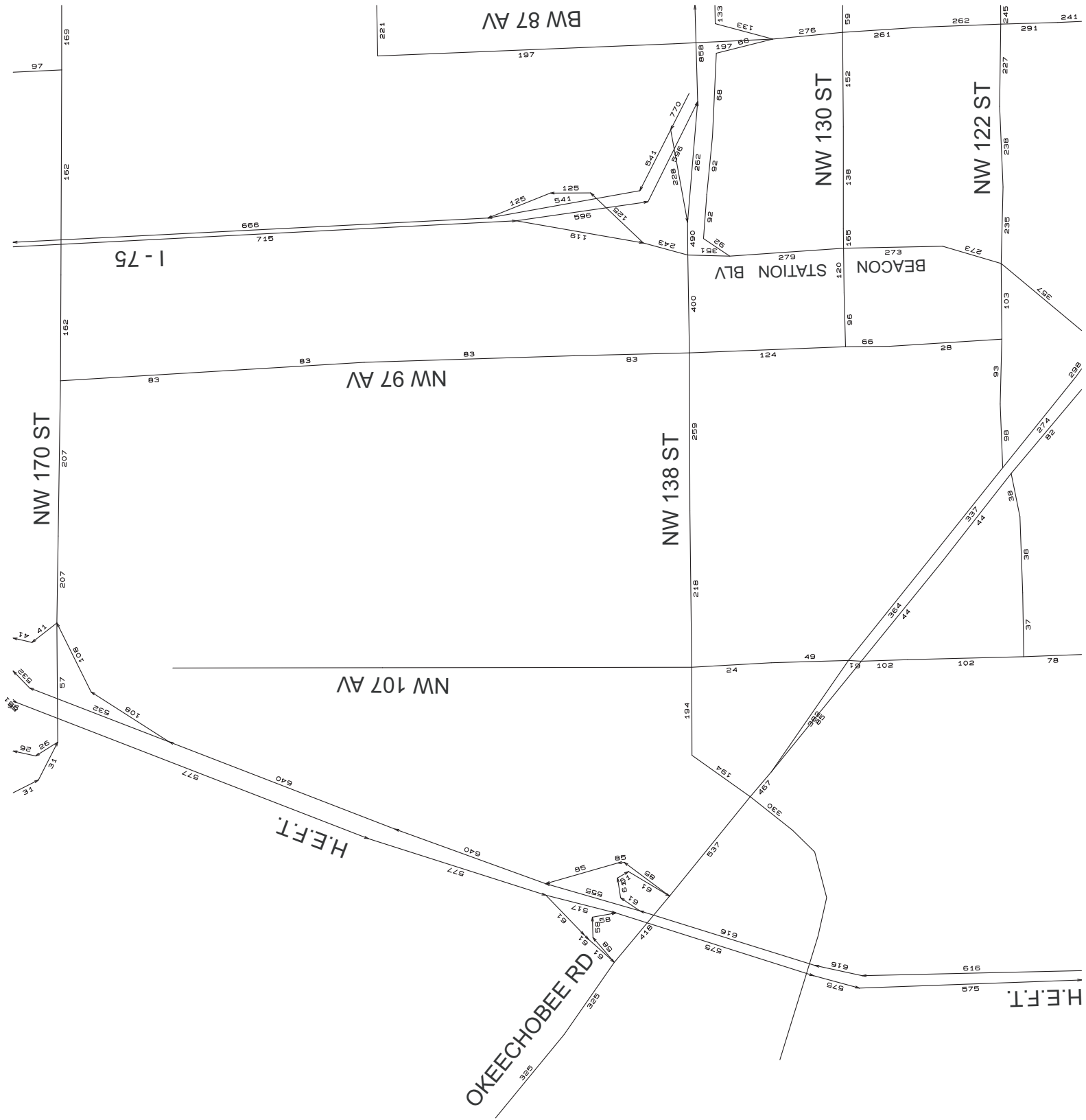
INSERT A



Miami Beacon County DRI (w 170 Int wo Proj) - #06257
 PLOT HIGHWAY LOAD -- TWO-WAY LINK VOLUMES
 (IN HUNDREDS)
 28MAY08 09: 50: 14



INSERT B



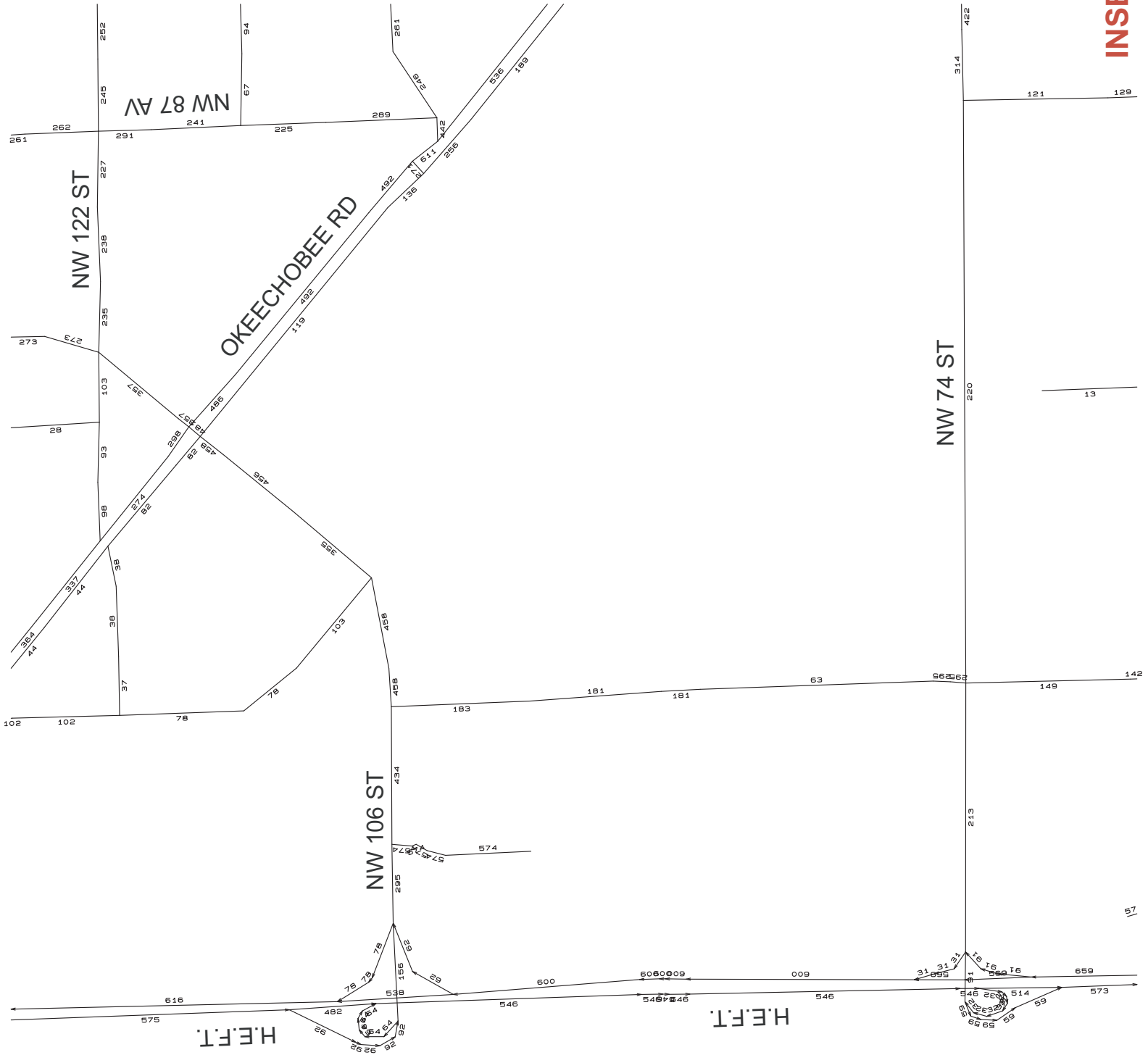
Miami

Beacon County DRI (w 170 Int wo Proj) - #06257
 PLOT HIGHWAY LOAD -- TWO-WAY LINK VOLUMES
 (IN HUNDREDS)

28MAY08 09: 51: 22



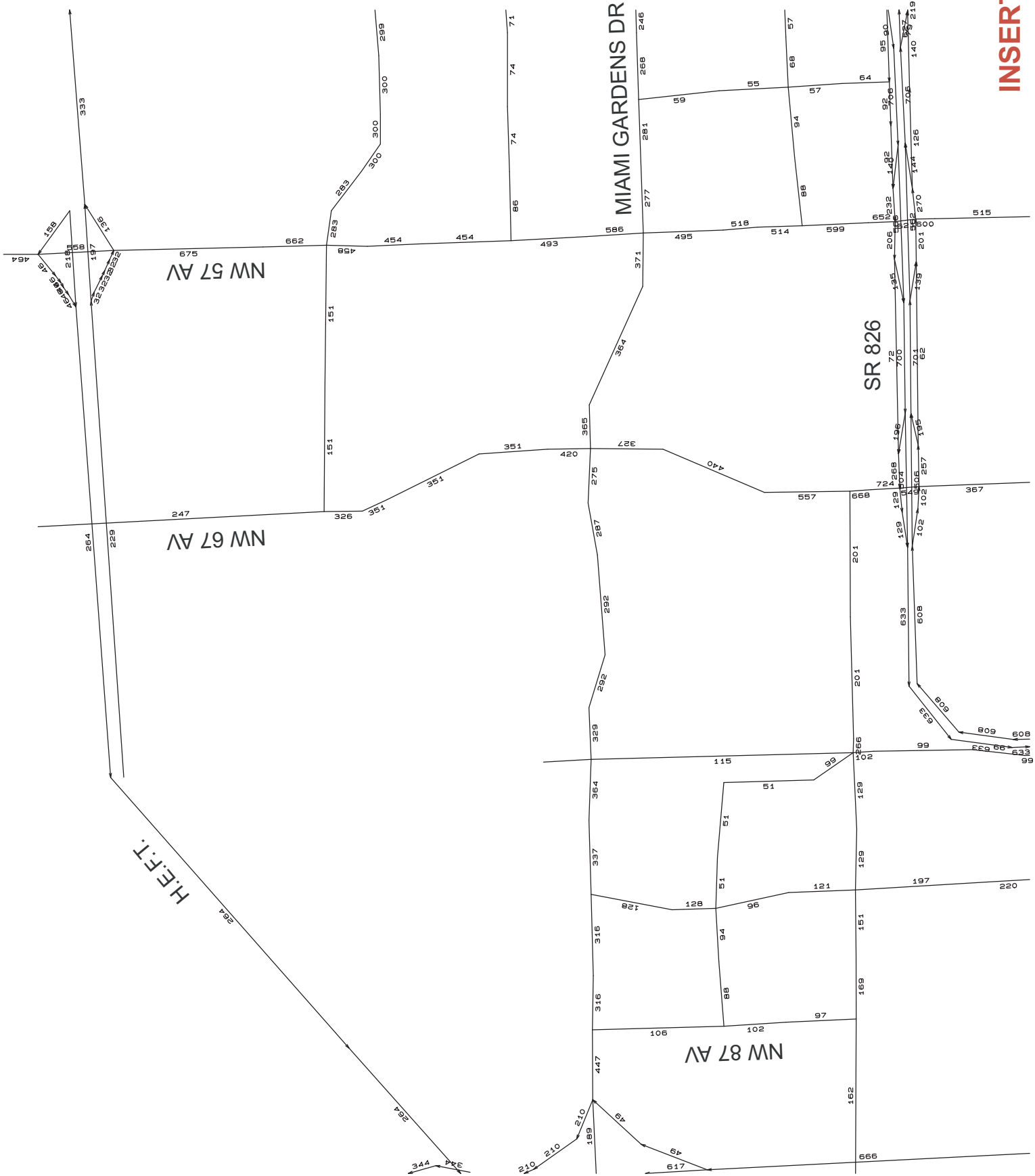
INSERT C



Miami

Beacon County DRI (w 170 Int wo Proj) - #06257
 PLOT HIGHWAY LOAD -- TWO-WAY LINK VOLUMES
 (IN HUNDREDS)

28MAY08 09: 52: 23



INSERT D

Miami Beacon County DRI (w 170 Int wo Proj) - #06257
 PLOT HIGHWAY LOAD -- TWO-WAY LINK VOLUMES
 (IN HUNDREDS)
 28MAY08 09: 49: 34



INSERT E



Miami Beacon County DRI (w 170 Int wo Proj) - #06257
PLOT HIGHWAY LOAD -- TWO-WAY LINK VOLUMES
(IN HUNDREDS)

28MAY08 09: 50: 52



INSERT F



Miami

Beacon County DRI (w 170 Int wo Proj) - #06257
PLOT HIGHWAY LOAD -- TWO-WAY LINK VOLUMES
(IN HUNDREDS)

28MAY08 09:51:51