

PART II

GENERAL SECTION

QUESTION 9 - MAPS

The following maps must be provided as a part of the ADA. The appropriate scale for each map should be determined at the pre-application conference.

Map A. A general location map. Indicate the location of any urban service area boundaries and regional activity centers near the project site.

See attached Map A: Location Map. There are no urban service area boundaries or regional activity centers near the project site.

Map B. A recent vertical aerial photo of the site showing project boundaries which reasonably reflects current conditions. Specify the date the photo was taken.

See attached Map B: Aerial.

Map C. A topographic map with project boundaries identified (contour intervals from one to five feet should be determined in consultation with the appropriate regional planning council and other reviewing agencies at the pre-application conference). Delineate 100-year flood prone areas (including hurricane flood zones) and indicate major land surface features. If applicable, delineate the coastal construction control line.

See attached Map C: Topographic Map.

Map D. A land use map showing existing and approved uses on and abutting the site. The uses shown should include existing on-site land uses, recreational areas, utility and drainage easements, wells, right-of-way, and historic, archaeological, scientific and architecturally significant resources and lands held for conservation purposes.

See Map D-1: Future Land Use and D-2: Existing Land Use attached. There are no recreational areas, utility and drainage easements, wells, right-of-way, and historic, archaeological, scientific and architecturally significant resources existing on or abutting the project site. The wetland area within the project site will remain preserved.

Map E. A soils map of the site, with an identification of the source of the information. The use of a source other than the most recently published U.S.D.A. Soil Conservation Service (SCS) soil surveys should be determined in consultation with the appropriate regional planning council and other reviewing agencies at the pre-application conference.

See attached Map E: Soils.

Map F. A vegetation associations map indicating the total acreage of each association, based on the Level III vegetation types described in The Florida Land Use and Cover Classification System: A Technical Report, available from each regional planning council.

See attached Map F: Vegetation Associations.

Map G. A location map of all transects, trap grids, or other sampling stations used to determine the on-site status of significant wildlife and plant resources. Show location of all observed significant wildlife and plant resources, and show location of suitable habitat for all significant resources expected to be on-site.

See attached Map G: Wildlife and Plant Resources.

Map H. A master development plan for the site. Indicate proposed land uses and locations, development phasing, major public facilities, utilities, preservation areas, easements, right-of-way, roads, and other significant elements such as transit stops, pedestrian ways, etc. This plan will provide the basis for discussion in Question 10-A as well as other questions in the ADA.

See attached Map H: Master Development Plan.

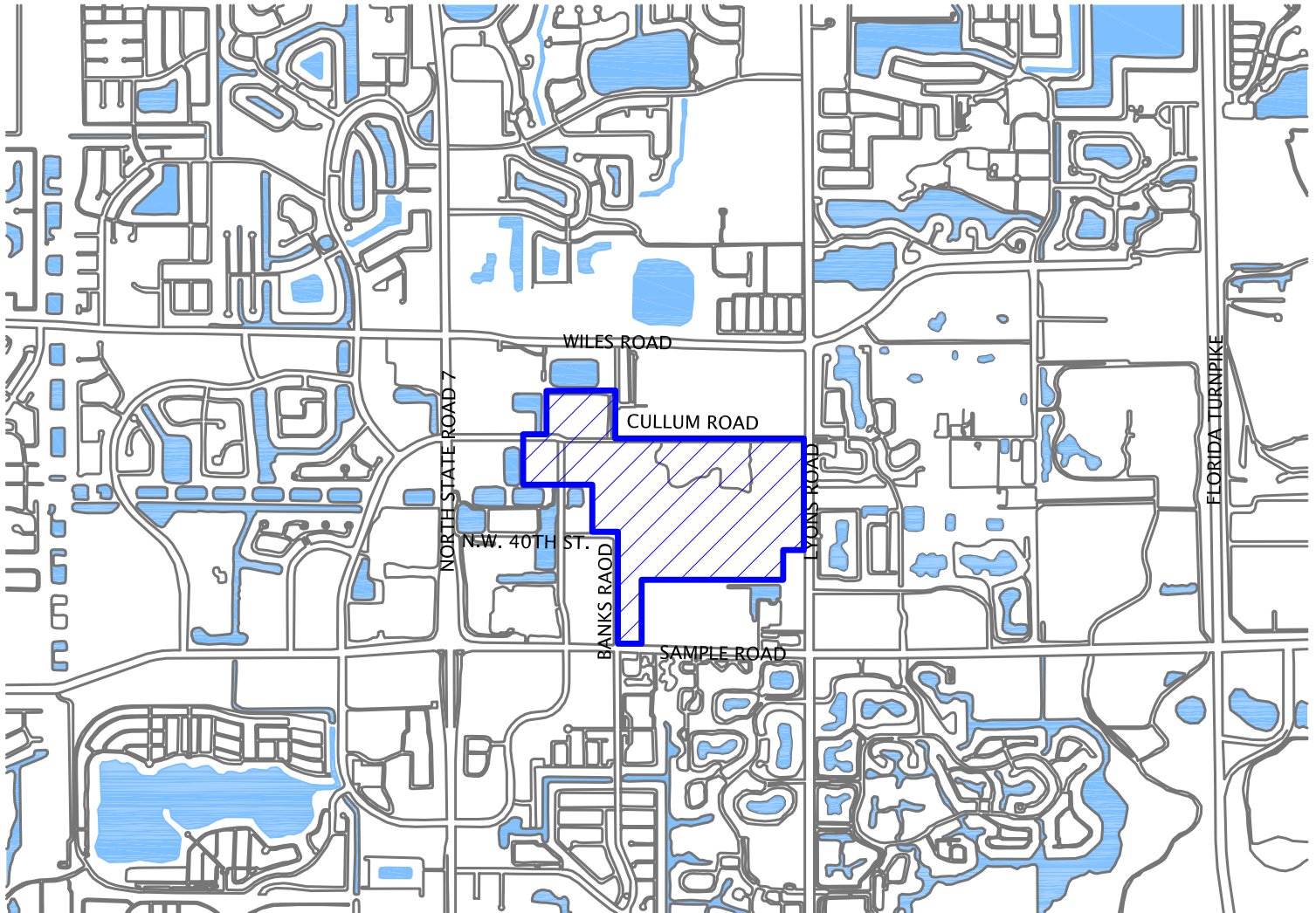
Map I. A master drainage plan for the site. Delineate existing and proposed: drainage basins, flow direction, water retention areas, drainage structures, flow route offsite, drainage easements, waterways, and other major drainage features. (This information may be presented on two separate maps (existing and proposed), if desired.)

See Map I: Master Drainage Map.

Map J. A map of the existing highway and transportation network within the study area. The study area includes the site, and locations of all transportation facilities which are substantially impacted. This area should be finally defined on the basis of the findings of the traffic impact analysis, including determinations of where the criteria for a substantial impact are met. Map J will become the base for the maps requested in Question 21.

See Map J within the Transportation section.

MAPS



SOURCE: A)GOOGLE EARTH
B)LIVEMAPS.COM
C)APRIL 2007

MAP A

LOCATION

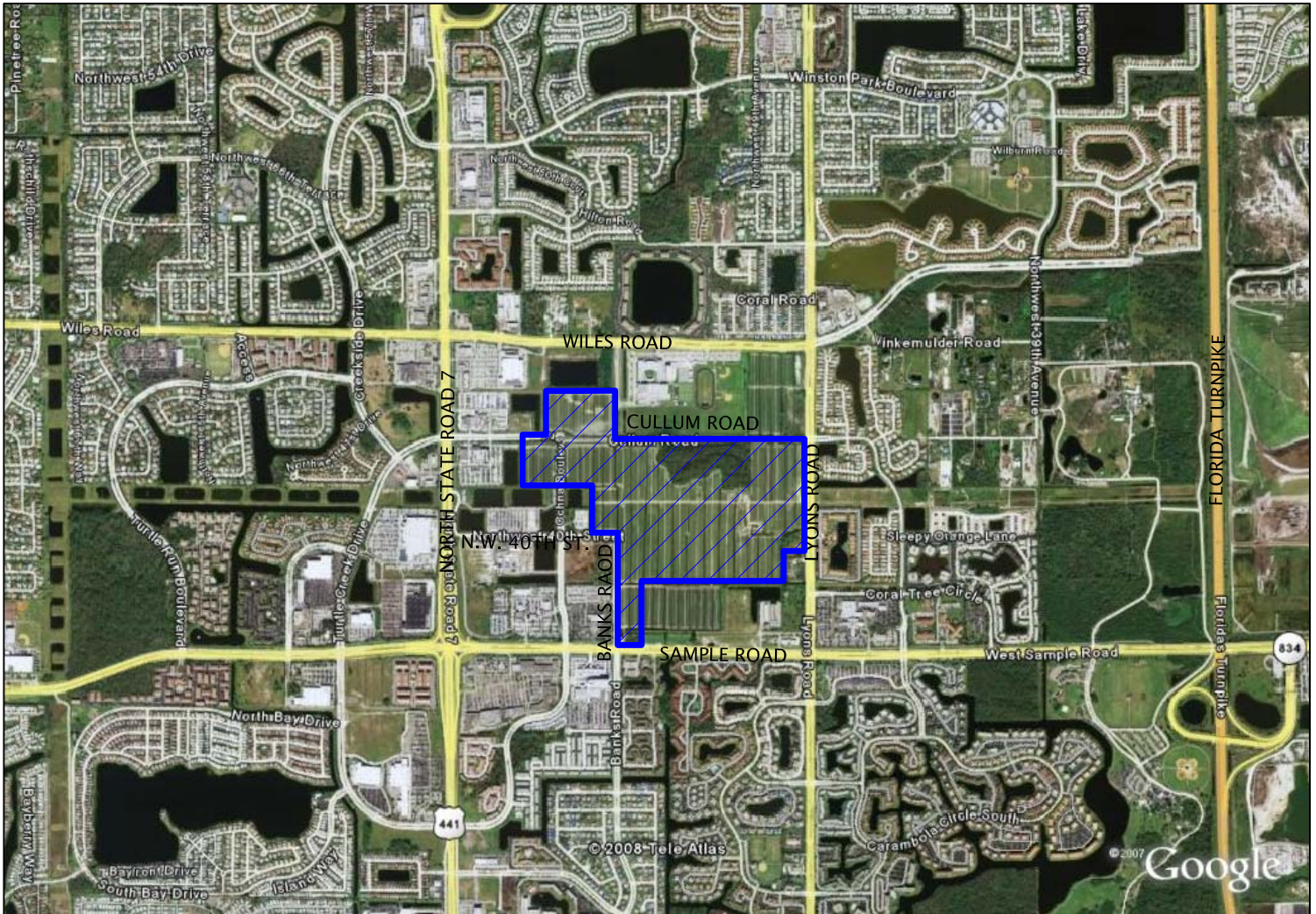
MAIN STREET @
COCONUT CREEK DRI



SCALE: 0'-1" = 2500'-0"
DATE: MARCH 27, 2009

Leigh Robinson **Kerr
& Associates, Inc.**

PLANNING-ZONING-LAND USE
808 E. Las Olas Blvd. - Suite 104
Fort Lauderdale, Florida 33301
(954) 467-6308



SOURCE: A)GOOGLE EARTH
B)LIVEMAPS.COM
C)APRIL 2007

MAP B

AERIAL

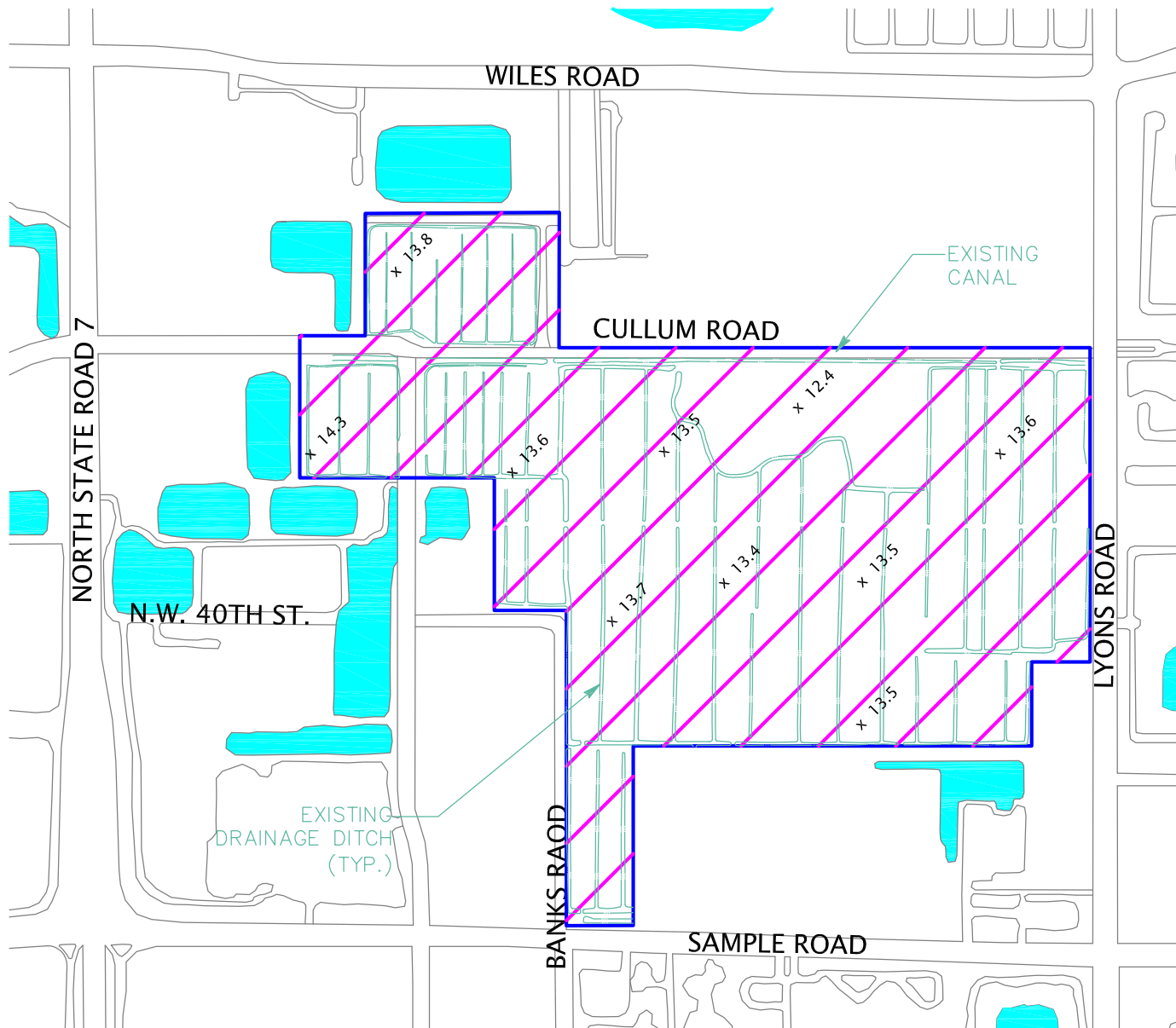
MAIN STREET @
COCONUT CREEK DRI



SCALE: 0'-1" = 2500'-0"
DATE: MARCH 27, 2009

Leigh Robinson **Kerr
& Associates, Inc.**

PLANNING-ZONING-LAND USE
808 E. Las Olas Blvd. - Suite 104
Fort Lauderdale, Florida 33301
(954) 467-6308



SOURCE: A)GOOGLE EARTH
B)LIVEMAPS.COM

EXHIBIT C

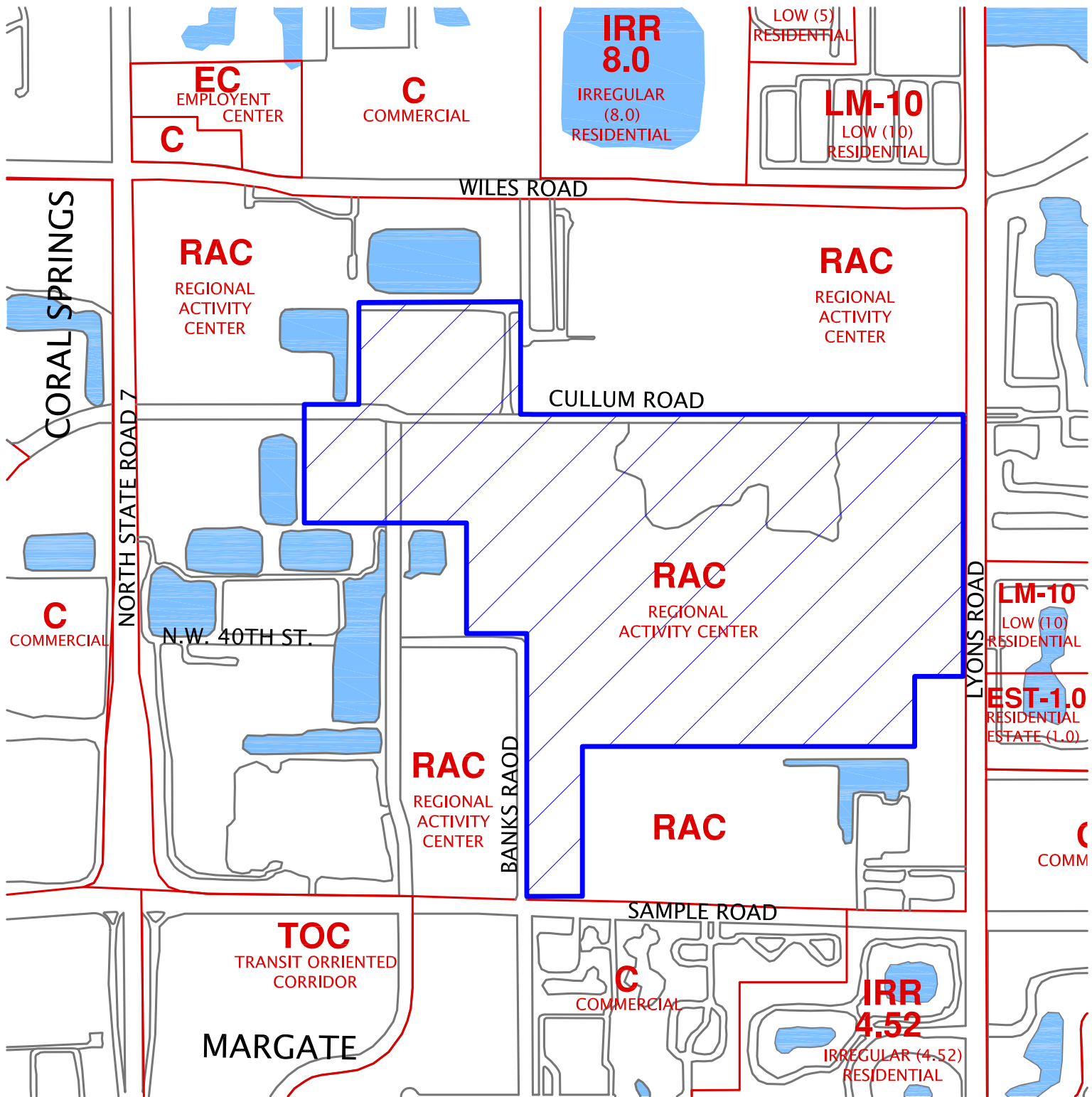
TOPOGRAPHIC MAP

MAIN STREET @
COCONUT CREEK DRI



SCALE: 1:10,000
DATE: DECEMBER 2, 2008

AUTOCADLT2000\PROJECTS\2805\DRI\EX-C



SOURCE: A)GOOGLE EARTH
B)LIVEMAPS.COM
C)APRIL 2007

MAP D-1

FUTURE LAND USE

MAIN STREET @
COCONUT CREEK DRI



SCALE: 1:15,000
DATE: MARCH 27, 2009

**Leigh Robinson Kerr
& Associates, Inc.**

PLANNING-ZONING-LAND USE
808 E. Las Olas Blvd. - Suite 104
Fort Lauderdale, Florida 33301
(954) 467-6308

SOURCE: A)GOOGLE EARTH
B)LIVEMAPS.COM
C)APRIL 2007

MAP D-2

EXISTING LAND USE

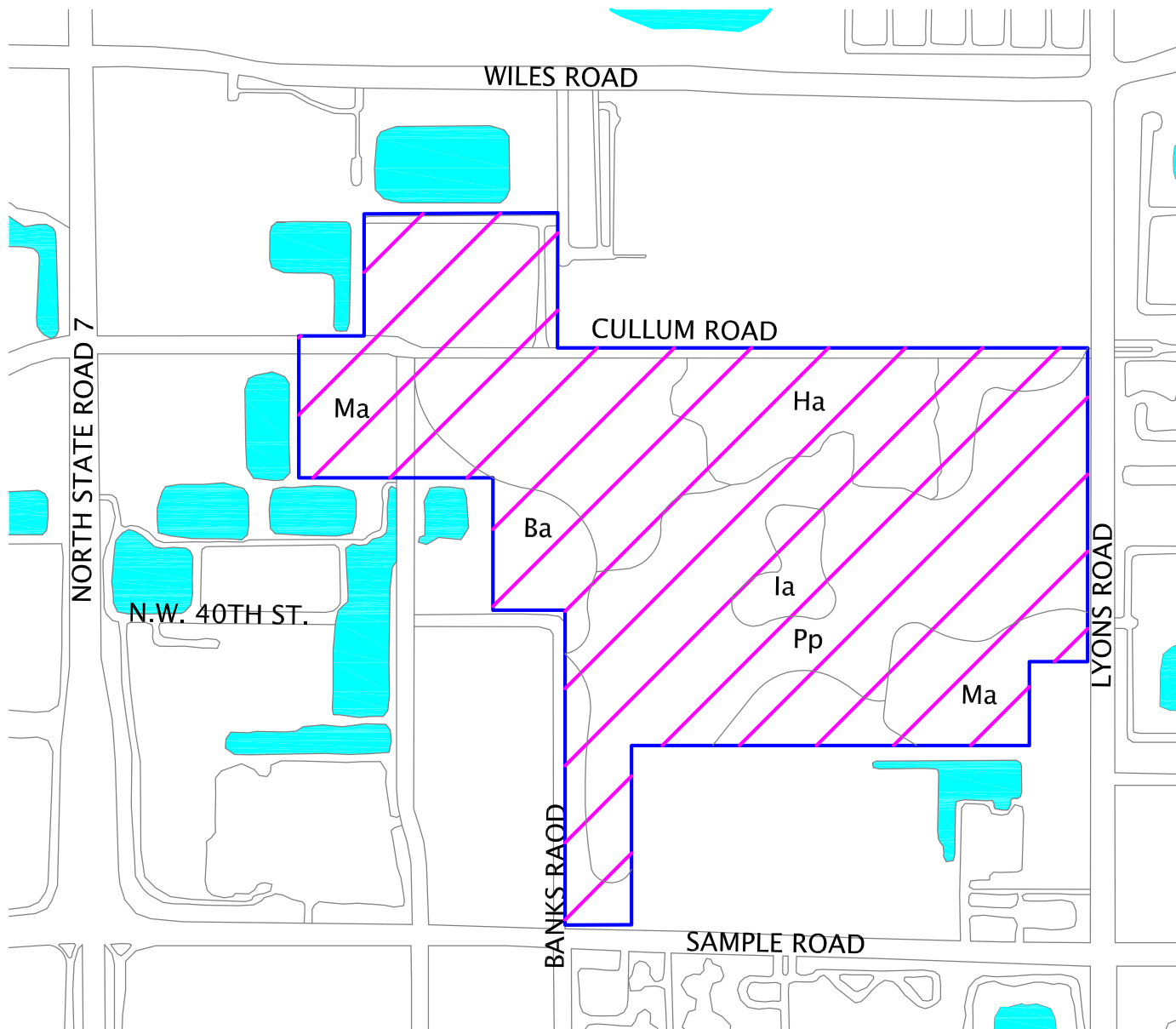
MAIN STREET @ COCONUT CREEK DRI



**Leigh Robinson Kerr
& Associates, Inc.**

PLANNING-ZONING-LAND USE
808 E. Las Olas Blvd. - Suite 104
Fort Lauderdale, Florida 33301
(954) 467-6308

SCALE: 1:15,000
DATE: APRIL 3, 2009



SOURCE: A)GOOGLE EARTH
B)LIVEMAPS.COM

MA - MARGATE FINE SAND
HA - HALLANDALE FINE SAND
BA - BASINGER FINE SAND
IA - IMMOKOLEE FINE SAND
PP - POMPAÑO FINE SAND

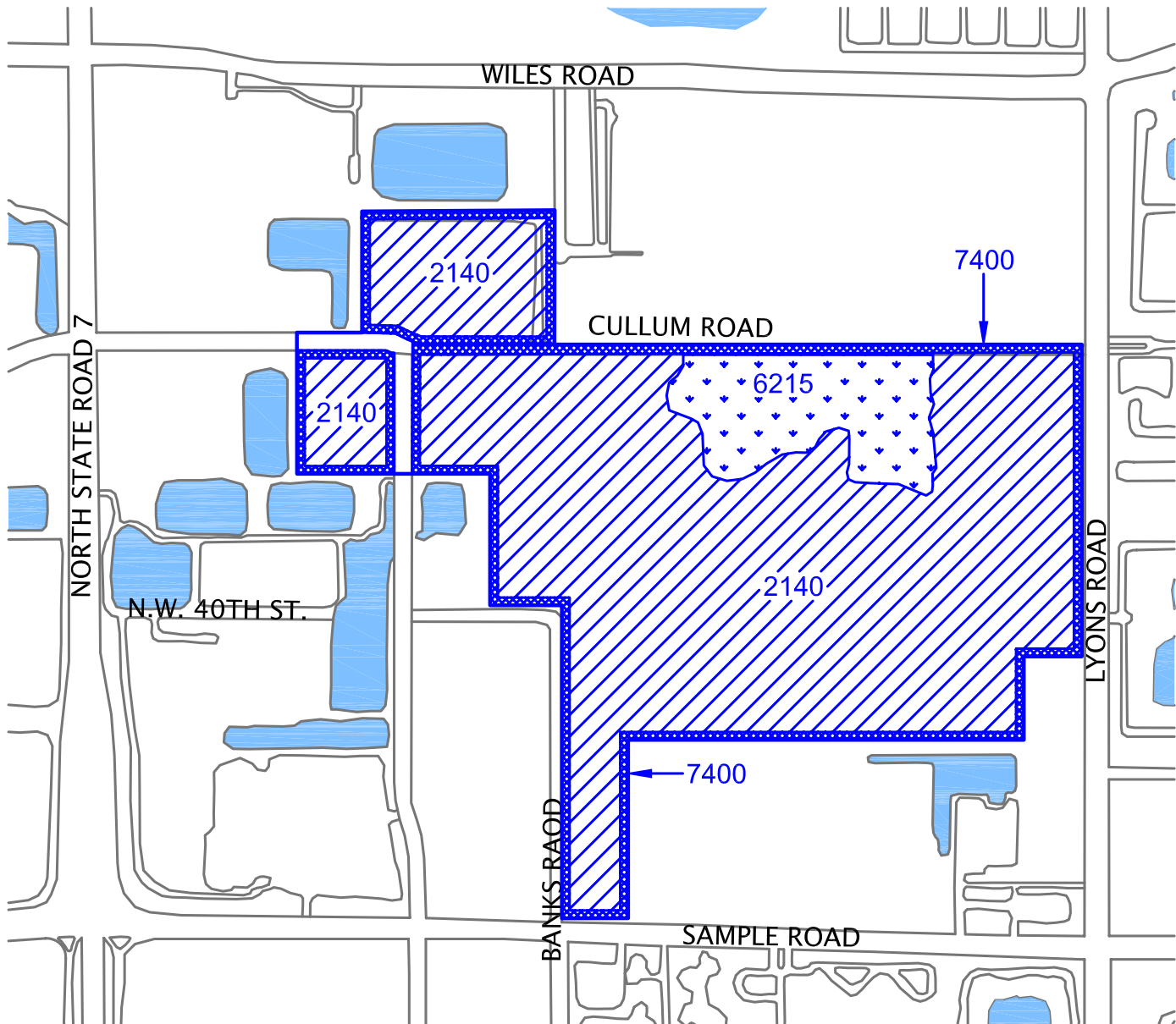
EXHIBIT E

SOILS MAP

MAIN STREET @
COCONUT CREEK DRI



SCALE: 1:10,000
DATE: DECEMBER 2, 2008



SOURCE: A)GOOGLE EARTH
B)LIVEMAPS.COM

LEGEND


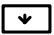

-  FLUCCS 2140 - ROW CROPS
-  FLUCCS 6215 - CYPRESS-MIXED HARDWOOD
-  FLUCCS 7400 - DISTURBED UPLAND

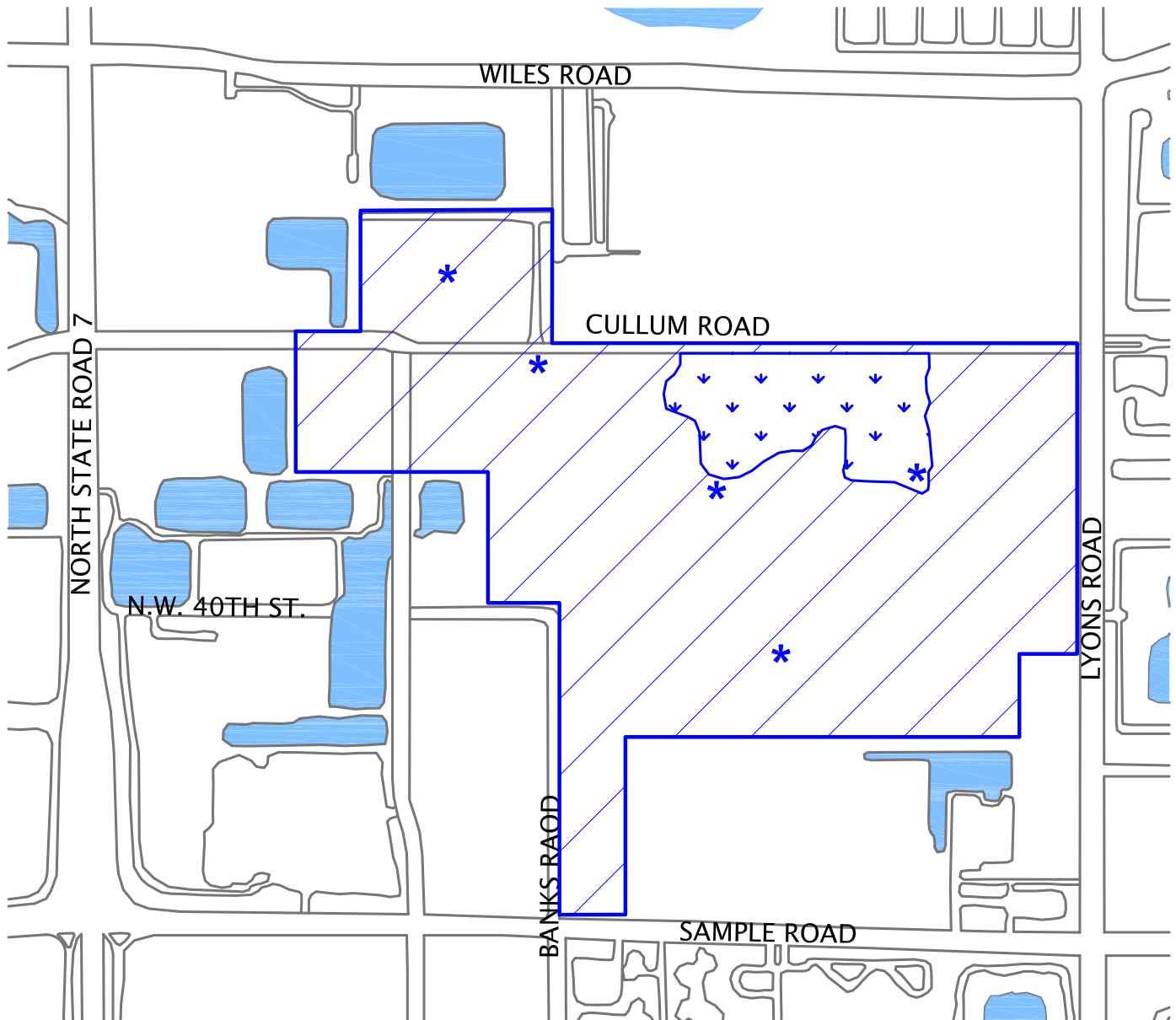
EXHIBIT F

VEGETATION ASSOCIATIONS MAP

MAIN STREET @
COCONUT CREEK DRI



SCALE: 1:10,000
DATE: DECEMBER 2, 2008



LEGEND



POINT COUNT

EXISTING WETLAND HABITAT (FLUCCS CODE 6215-CYPRESS-MIXED HARDWOOD)

SOURCE: A)GOOGLE EARTH
B)LIVEMAPS.COM

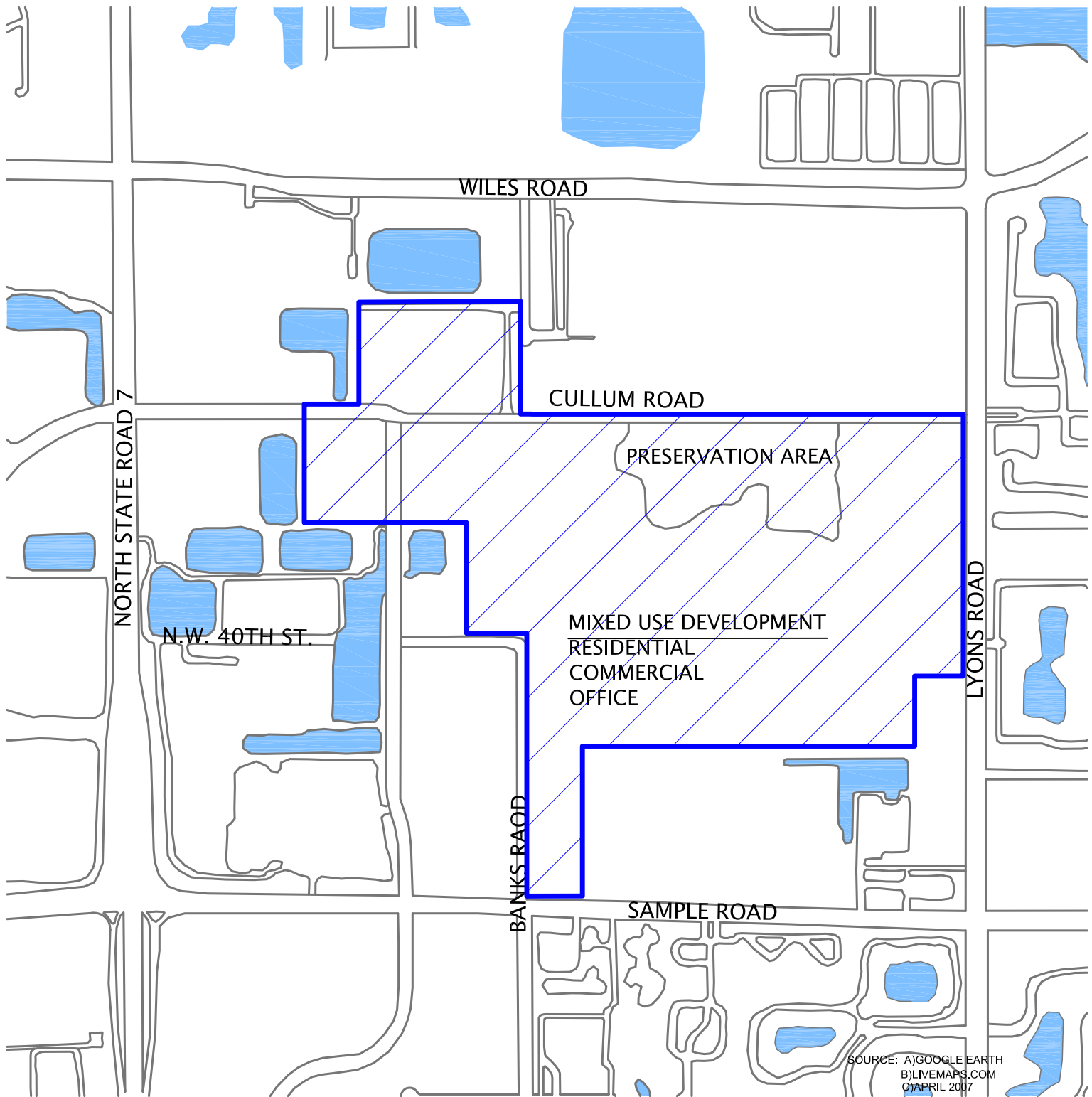
EXHIBIT G

WILDLIFE AND PLANT RESOURCES MAP

MAIN STREET @
COCONUT CREEK DRI



SCALE: 1:10,000
DATE: DECEMBER 2, 2008



MAP H

MASTER DEVELOPMENT PLAN

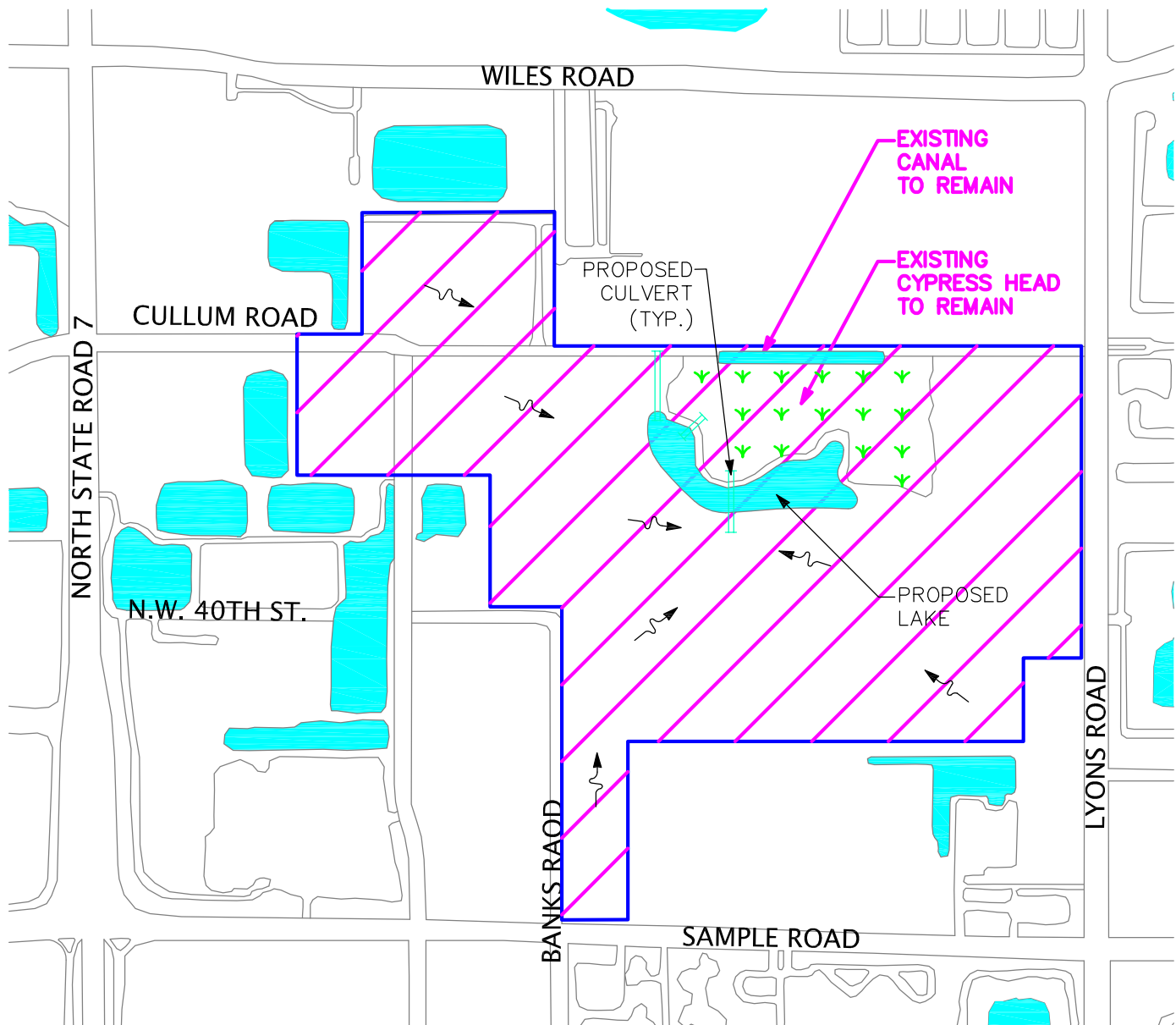
MAIN STREET @
COCONUT CREEK DRI



SCALE: 1:10,000
DATE: APRIL 8, 2009

**Leigh Robinson Kerr
& Associates, Inc.**

PLANNING-ZONING-LAND USE
808 E. Las Olas Blvd. - Suite 104
Fort Lauderdale, Florida 33301
(954) 467-6308



SOURCE: A)GOOGLE EARTH
B)LIVEMAPS.COM

NOTE: LAKE SIZE AND LOCATION SUBJECT
TO ZONING AND SITE PLAN APPROVAL.

EXHIBIT I

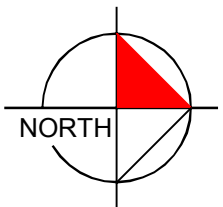
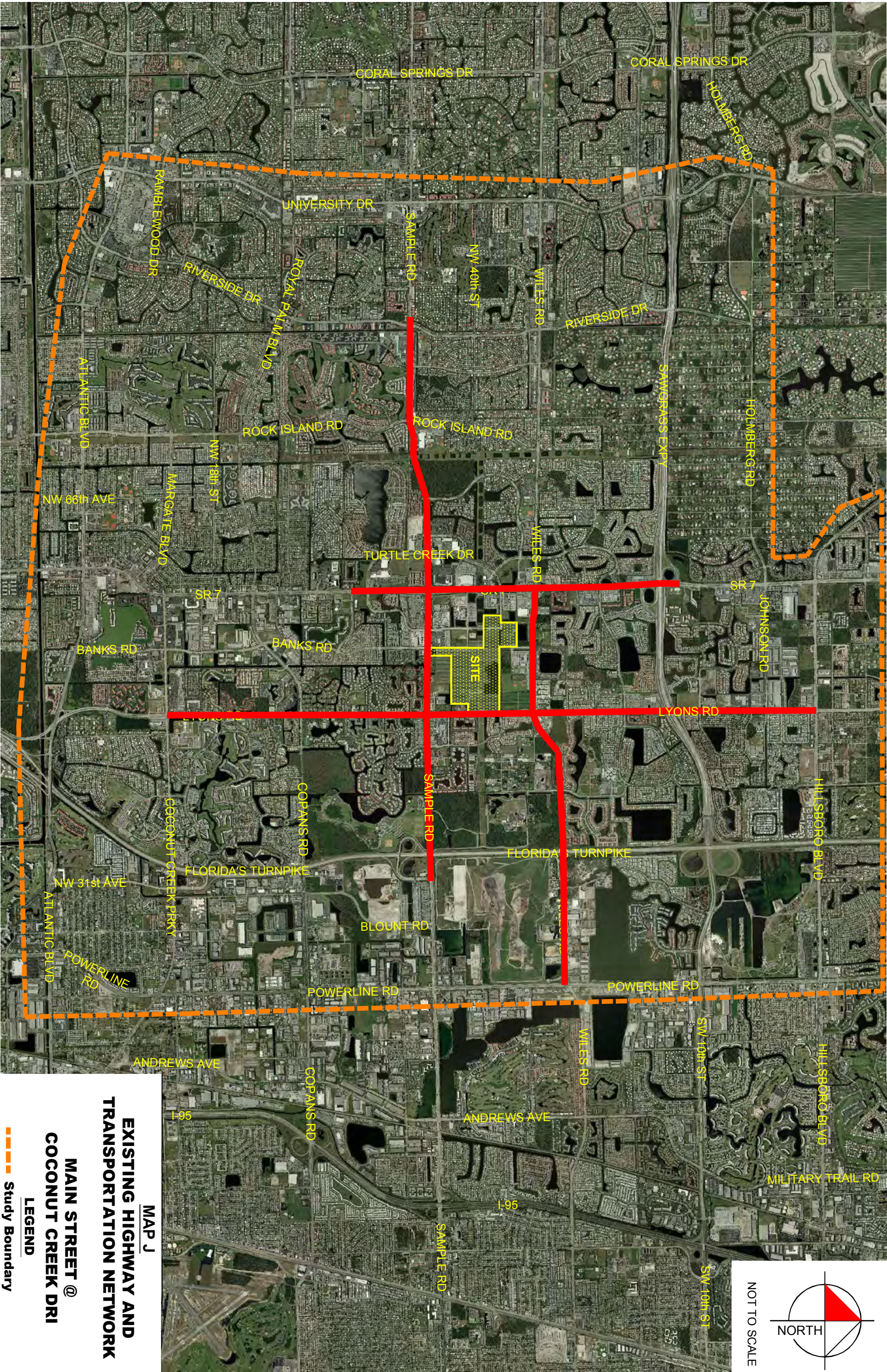
MASTER DRAINAGE PLAN MAP

MAIN STREET @
COCONUT CREEK DRI



SCALE: 1:10,000
DATE: DECEMBER 2, 2008

AUTOCADLT2000\PROJECTS\2805\DR\EX-I



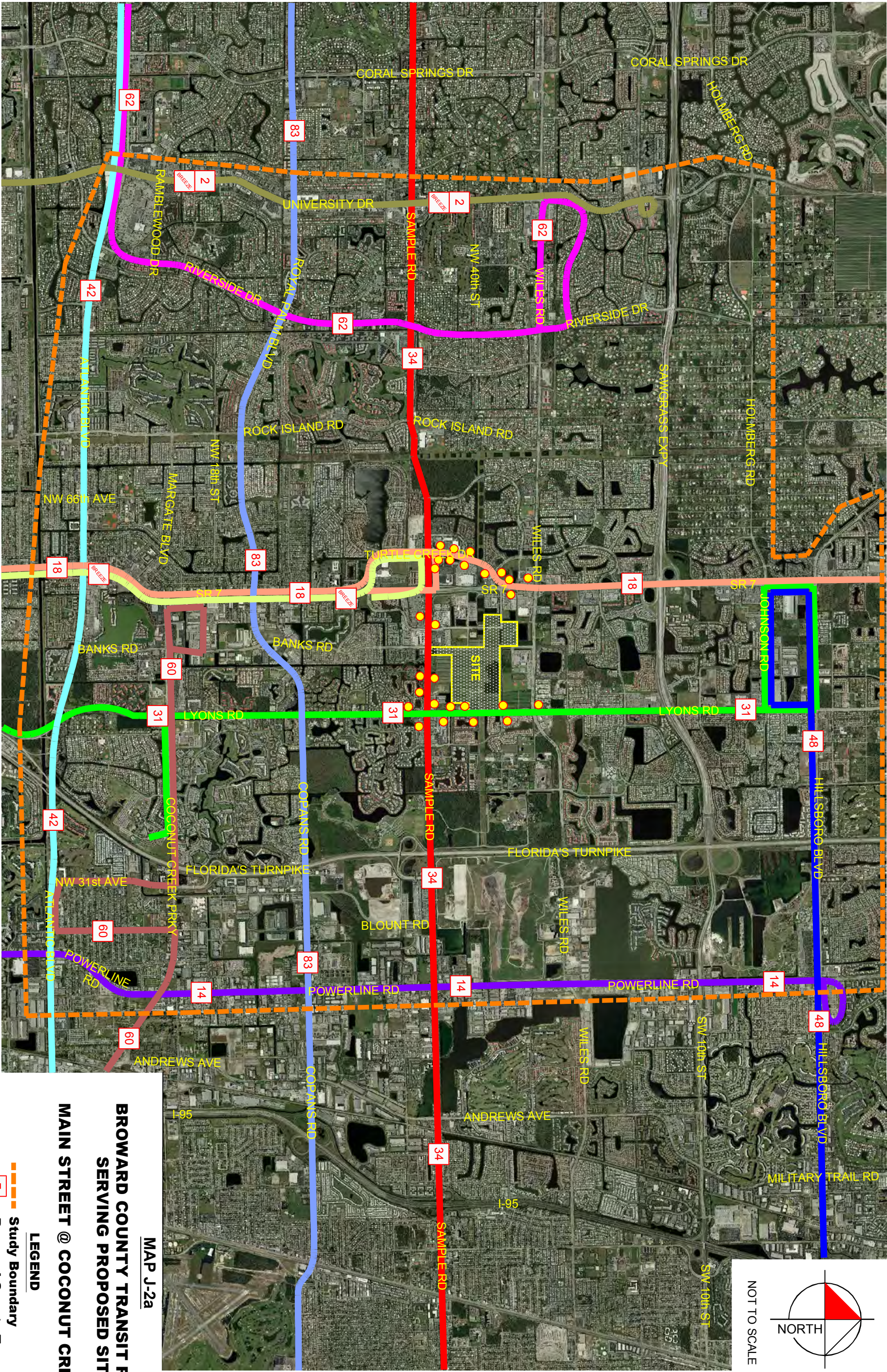
NOT TO SCALE

MAP J
EXISTING HIGHWAY AND
TRANSPORTATION NETWORK

MAIN STREET @
COCONUT CREEK DRI

LEGEND

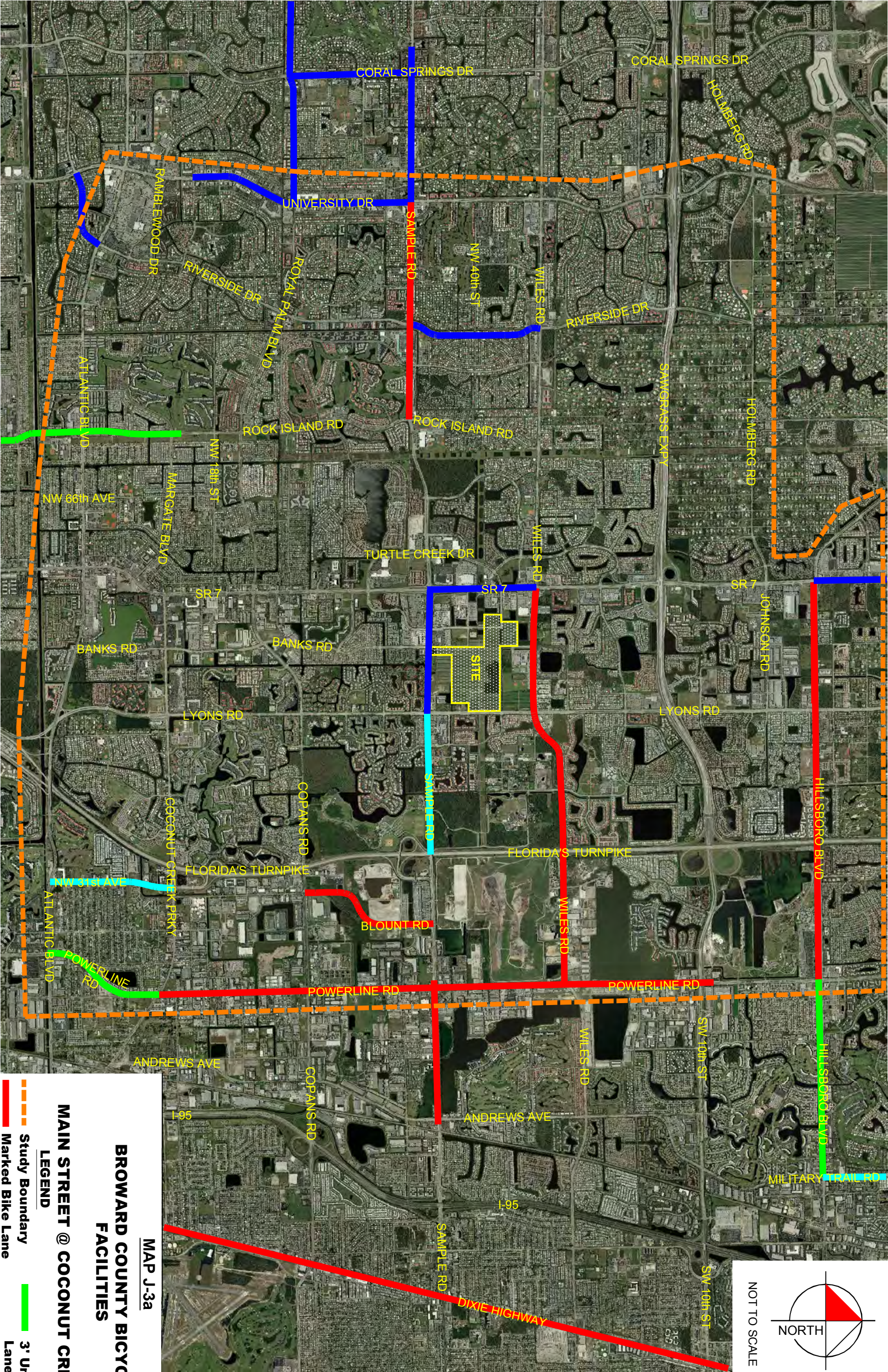
- Study Boundary
- Significant Roadway Segment



**BROWARD COUNTY TRANSIT ROUTES
SERVING PROPOSED SITE**

MAIN STREET @ COCONUT CREEK DRI

- LEGEND**
- Study Boundary
 - Broward County Transit Routes
 - Transit Stops



BROWARD COUNTY BICYCLE FACILITIES

MAP J-3a

MAIN STREET @ COCONUT CREEK DRI

LEGEND

- Study Boundary
- Marked Bike Lane
- Wide Curb Lane
- 3' Undesignated Lane
- Paved Shoulder