



EAS ENGINEERING, INC.

55 ALMERIA AVE. • CORAL GABLES • FLORIDA 33134 • (305) 445-5553 • FAX: (305) 444-2112 • WWW.EAS-ENG.COM

October 5, 2006

Ms. Barbara Conmy  
South Florida Water Management District  
P.O. Box 24680  
West Palm Beach, Florida, 33416-4680

Re: Parkland DRI

Dear Ms. Conmy:

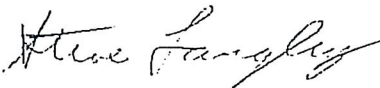
Please accept this letter as follow-up to our recent phone conversations regarding the above referenced project. We would like to schedule a joint inspection of the subject property to identify and map any wetlands. It is our understanding that Rob Hopper has been assigned to perform this inspection. As discussed, we would like him to coordinate with us, so that we can accompany him.

As requested, we have enclosed five (5) copies of a color aerial photo of the project vicinity, with the DRI boundary outlined and a copy of the soil map.

If you have any questions or need additional information, please feel free to call us.

Sincerely,

EAS Engineering, Inc.



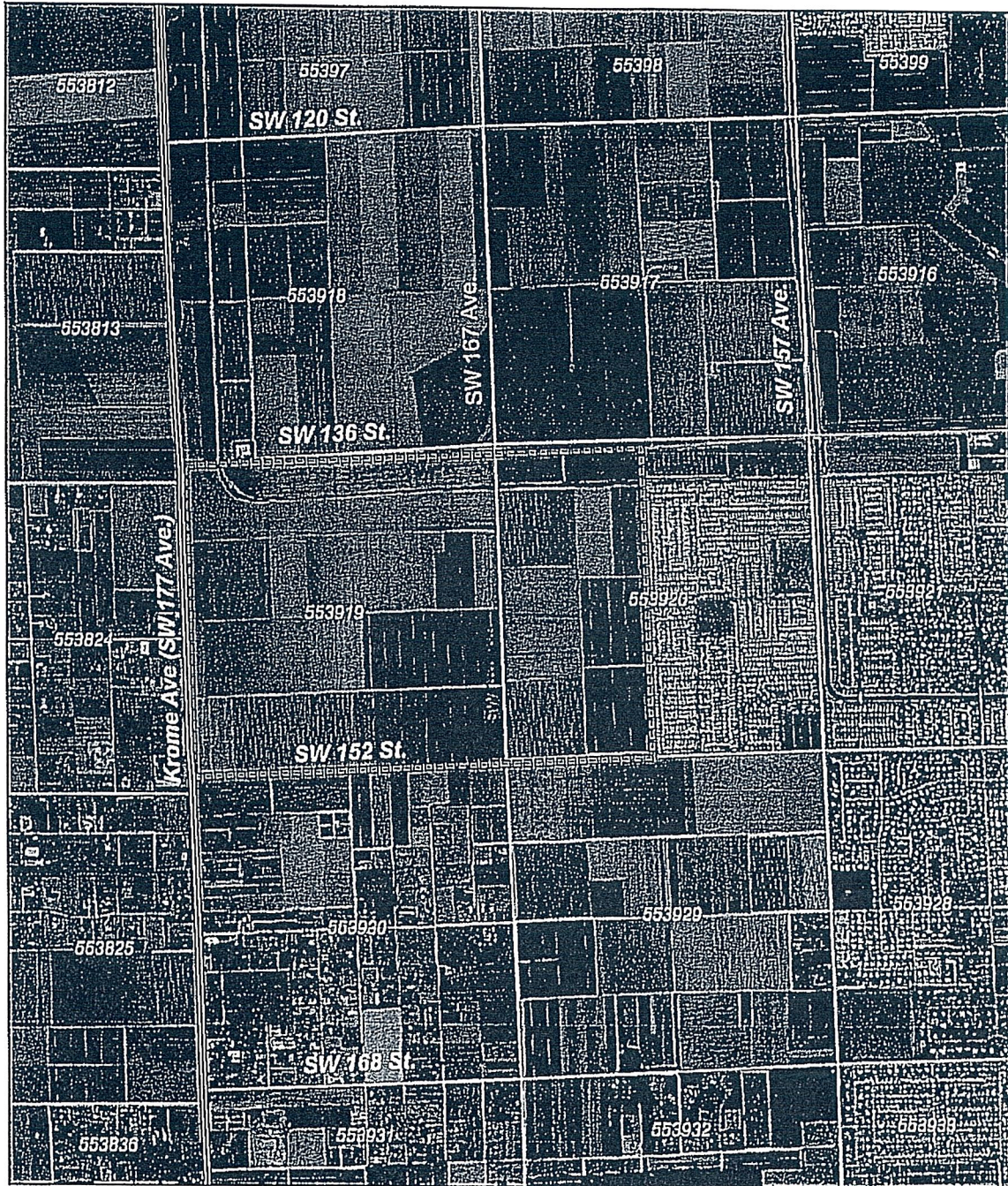
(for) Edward A. Swakon, P.E.

President

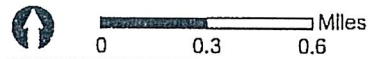
spl

enclosures

cc: Rob Curtis (w/encl)



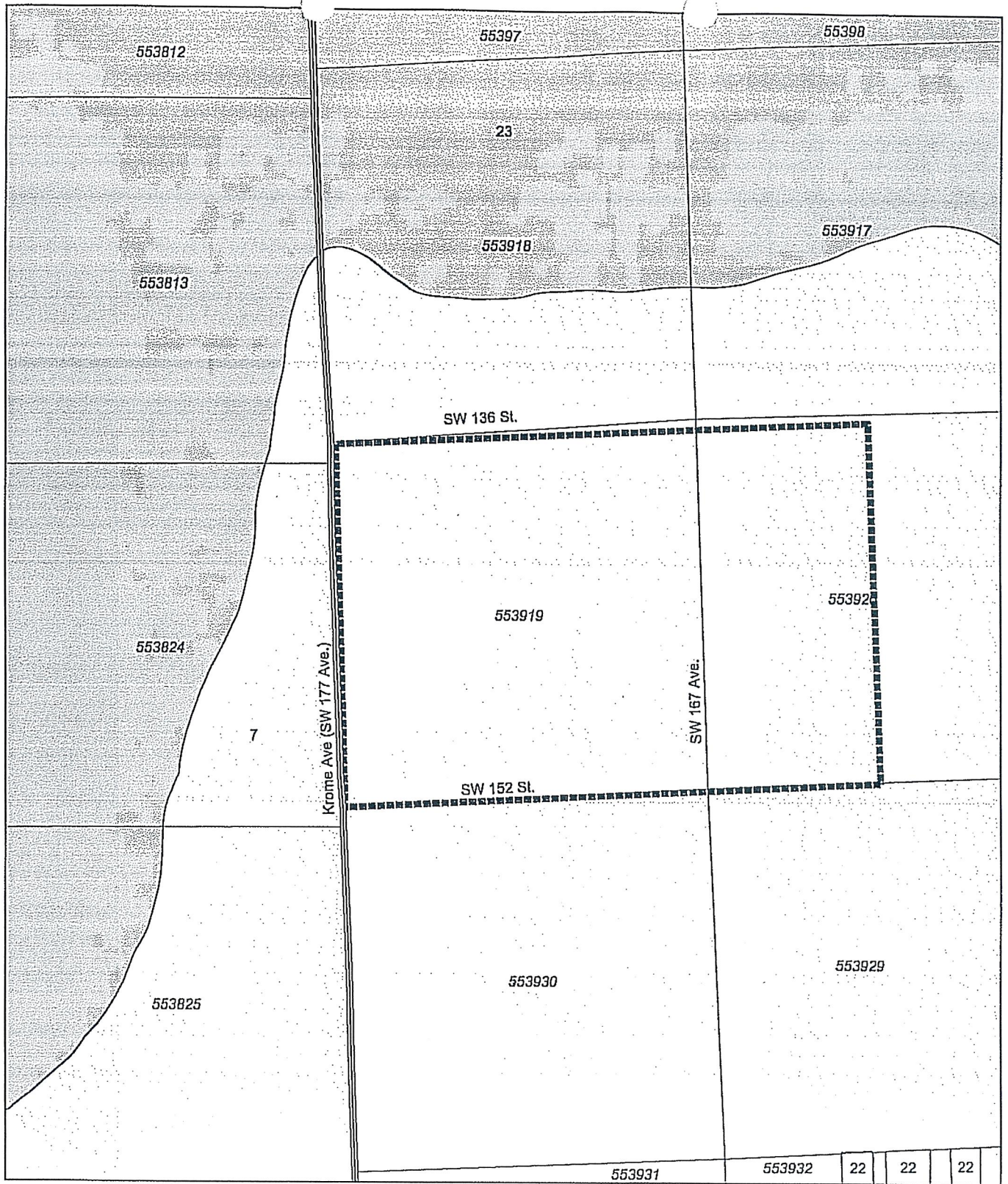
- Legend**
- Sections
  - ▤ DRI Boundary



MapB.pdf

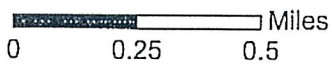
Map B  
2005 Aerial Photograph

Parkland  
August 2006



**Legend**

- Sections    □ CHEKIKI VERY GRAVELLY LOAM
- ▣ DRI Boundary    □ KROME VERY GRAVELLY LOAM



Map E  
Soils

Parkland  
August 2006