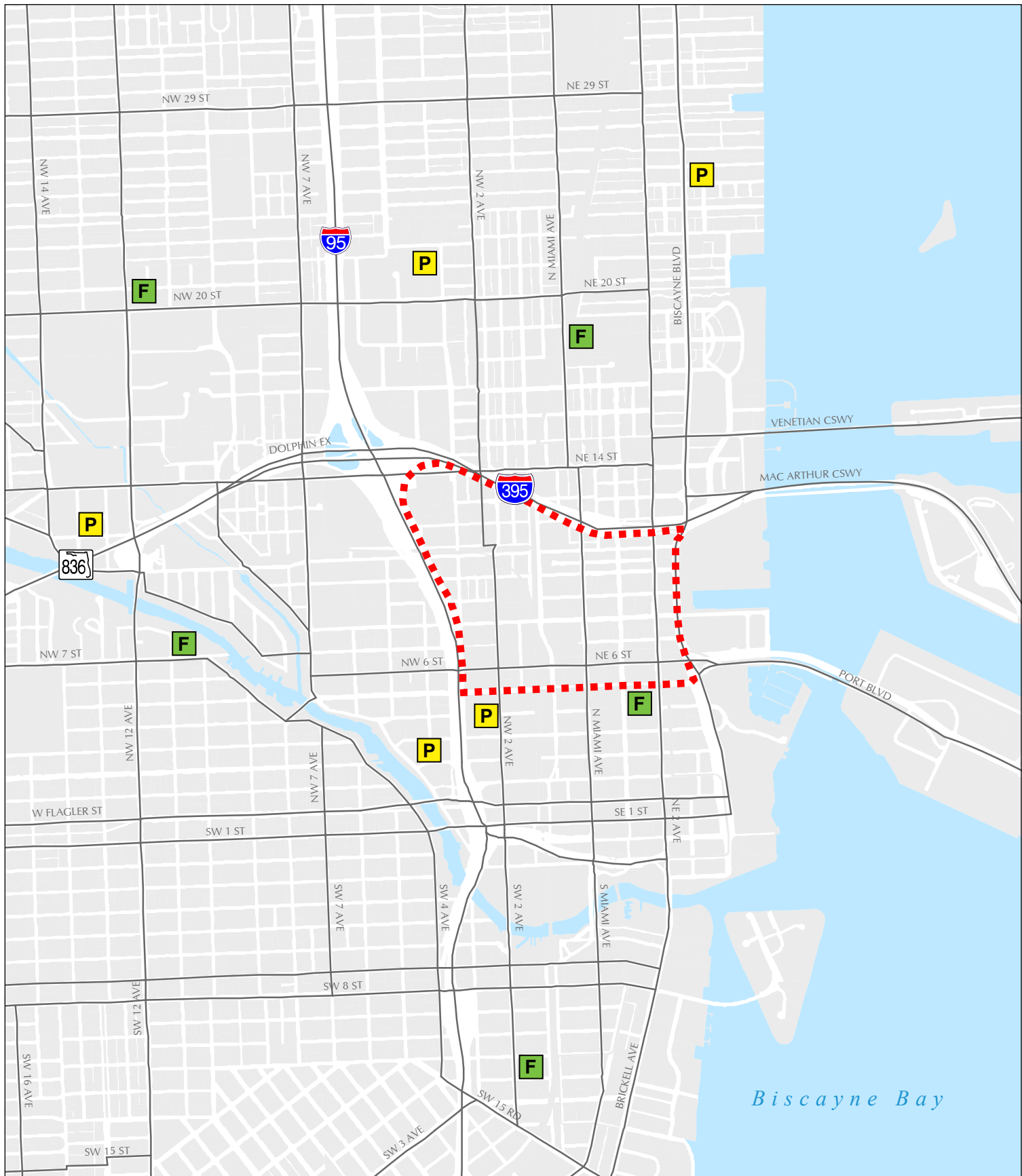


Question 25 – Police and Fire Protection




- A. If police/fire services, facilities or sites will be dedicated or otherwise provided on-site, describe them, specify any conditions of dedication and locate on Map H.**

Police and fire facilities, serving the City of Miami at large, are located in close proximity to SEOPW DRI area. Facilities which are located approximately within a 1-mile radius of the project area are shown in **Table 25-1** and **Exhibit 25-1 Police and Fire Service Locations**.

Table 25-1 Police and Fire Service Locations		
Department	Address	Main
POLICE		
MPD - Bayside	Bayside Marketplace Miami, FL 33128-1786	(305)372-4575
MPD - Central Headquarters	400 N.W. 2nd Ave. Miami, FL 33128-1786	(305)579-6540
MPD - EdgeWater	2415 Biscayne Blvd. Miami, FL 33137-4515	(305)372-4584
MPD - Metro Justice Bldg.	1351 N.W. 12th St. Miami, FL 33125-1631	(305)575-2333
MPD - Mounted	360 N.W. 3rd St. Miami, FL 33128-0000	(305)579-3497
MPD - Omni	391 N.E. 15th St. Miami, FL 33128-1786	(305)579-6038
MPD - Rainbow Village	2132 N.W. 3rd Ave. Miami, FL 33127-4177	(305)576-3923
FIRE		
Fire - Station 1	144 N.E. 5th St. Miami, FL 33132-1909	(305)579-6215
Fire - Station 2	1901 N. Miami Ave. Miami, FL 33136-1313	(305)579-6202
Fire - Station 3	1103 N.W. 7th St. Miami, FL 33136-3604	(305)575-5223
Fire - Station 4	1105 S.W. 2nd Ave. Miami, FL 33130-4011	(305)579-6204
Fire - Station 5	1200 N.W. 20th St. Miami, FL 33142-7720	(305)575-5219



LEGEND

-  Southeast Overtown Park West DRI Boundary
-  Police Facility
-  Fire Station



Source: Miami-Dade GIS 2008; Adapted by The Curtis Group, 2010
 0 1000 2000 4000 Feet

**EXHIBIT 25-1
 POLICE AND FIRE SERVICE LOCATIONS**

SEOPW DRI - INCREMENT III

- B. Provide correspondence from the appropriate providers acknowledging notice of the proposed development and phasing, and indicating whether present facilities and manpower are capable of serving the project or specifying the additional manpower/equipment necessary to serve the development. If the provider is from another jurisdiction, the letter should also identify any non facility related problems in providing said service.**

Exhibit 25-2 Police and Fire Service Provider Letters include letters to and from the City of Miami Police Department and the City of Miami Fire-Rescue Department, that address the respective agencies' ability and commitment to provide police and fire-rescue service to the Project.

Exhibit 25-2
POLICE AND FIRE SERVICE PROVIDER LETTERS

City of Miami



CARLOS A. MIGOYA
City Manager

JUL 30 2010

Mr. Rob Curtis
The Curtis Group
7520 Red Road, Suite M
South Miami, Florida 33143

RE: Southeast Overtown/Park West DRI Proposed Development Program for Increment III
Police Protection Services

Dear Mr. Curtis:

The City of Miami Police Department's present facilities and staffing are capable of providing police services to the above referenced project.

Should you have any questions or concerns, please do not hesitate to contact Commander David Patino at (305) 603-6635.

Sincerely,

Miguel A. Exposito
Chief of Police

MAE: RMB: DM: dp



City of Miami



CARLOS A. MIGOYA
City Manager

October 8, 2010

Rob Curtis
The Curtis Group
7520 Red Road, Suite M
South Miami, FL 33143

RE: SOUTHEAST OVERTOWN PARK WEST DRI UPDATE
FIRE AND EMERGENCY RESPONSE SERVICES

Dear Mr. Curtis:

We have received your letter referencing the application for approval of Increment III of the Southeast Overtown Park West Development Impact. Pursuant to your request we have evaluated the information included and have deduced that the totality of the increased development will have a significant impact to our current service delivery model.

In order to maintain service levels we have concluded that in addition to maintaining current units and daily staffing levels of 149 firefighters, the following additional units and required associated staffing is required:

One Aerial (Ladder Truck)

We are anxious and pleased to see the projected development for this area and will actively participate in every effort to see it become a reality. Should you have any questions please contact Deputy Chief Reginald K. Duren at 305.416.5403.

Sincerely,

Maurice L. Kemp
Miami Fire Chief

MLK/RD/acp

Mr. Miguel A. Exposito, Chief
City of Miami Police Department
400 NW 2nd Avenue
Miami, Florida 33128

Re: Southeast Overtown Park West DRI Update
Police Protection Services

Dear Mr. Miguel A. Exposito:

In accordance with Chapter 380.06, Florida Statutes, regarding Developments of Regional Impact (DRI), we are required to obtain information from the City of Miami Police Department regarding its ability to provide our project with police protection services.

The Southeast Overtown Park West Community Redevelopment Agency and the City of Miami as co-applicants are applying for the approval of Increment III of the Southeast Overtown Park West Development of Regional Impact (SEOPW DRI). The purpose of the DRI is to simplify and expedite the process for the impact review of large-scale development. The DRI is a Master Incremental DRI that establishes a development program that specifies the total amount of development that can be located anywhere within the DRI boundaries, subject to local land development regulations.

The SEOPW DRI area contains approximately 209 acres of urban development, and is generally bounded on the north by I-395, on the east by Biscayne Boulevard, on the south by NW/NE 5th Street, and on the west by I-95. An aerial map showing the project location is enclosed.

Also enclosed is a summary of the development program in table form showing the proposed land uses and amounts pursuant to the guidelines and standards in Chapter 28-24, F.A.C. Increment I and II which were originally approved in 1988 and 1992 respectively, and Increment III, which is currently being proposed, specify the type and intensity of land use in the SEOPW area for the next 10 years. We will notify you if the development program for Increment III is adjusted.

Please indicate in your response whether or not your present facilities and staffing are capable of serving the Project. If not, please specify the additional staffing/equipment necessary to do so.

Your written response will be an integral part of the DRI application process. I respectfully request your prompt attention to this letter.

If you have any questions, please do not hesitate to call me at (305) 663 5800.

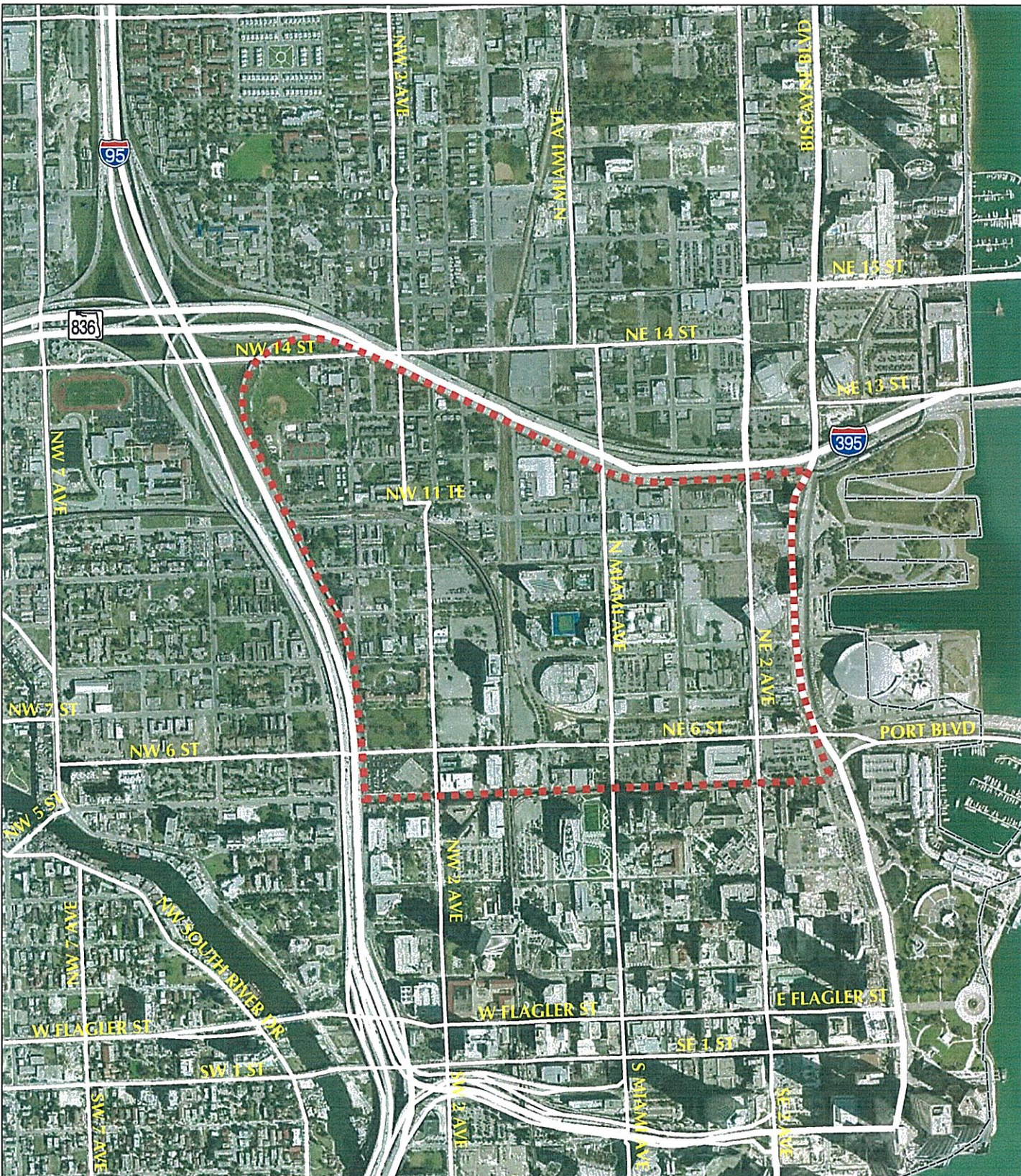
Thank you.

Sincerely,



NEHA SHINDE

Rob Curtis

Y:\USB\DATA\PROJECTS\2008_03 SEOPW DRI\2008-03_Mile B_Aerial Map.mxd



LEGEND

 Southeast Overtown Park West DRI Boundary

Source: Miami-Dade GIS 2008; Adapted by The Curtis Group, 2009
0 500 1000 2000 Feet

AERIAL MAP
SEOPW DRI - INCREMENT III

Table 1
SEOPW DRI - Proposed Development Program for Increment III

Use	Units	Increment III Proposed Development Program
Office	SF	2,300,000
Retail	SF	1,250,000
Residential	DU	4,000
Hotel	Rooms	2,100
Recreation	Seats	8,000
Convention	SF	200,000

Mr. Maurice Kemp, Chief
City of Miami
Department of Fire-Rescue
1151 NW 7th Street
Miami, Florida 33136

Re: Southeast Overtown Park West DRI Update
Fire and Emergency Response Services

Dear Chief Kemp:

In accordance with Chapter 380.06, Florida Statutes, regarding Developments of Regional Impact (DRI), we are required to obtain information from the City of Miami Department of Fire-Rescue regarding its ability to provide our project with fire and emergency response services.

The Southeast Overtown Park West Community Redevelopment Agency and the City of Miami as co-applicants are applying for the approval of Increment III of the Southeast Overtown Park West Development of Regional Impact (SEOPW DRI). The purpose of the DRI is to simplify and expedite the process for the impact review of large-scale development. The DRI is a Master Incremental DRI that establishes a development program that specifies the total amount of development that can be located anywhere within the DRI boundaries, subject to local land development regulations.

The SEOPW DRI area contains approximately 209 acres of urban development, and is generally bounded on the north by I-395, on the east by Biscayne Boulevard, on the south by NW/NE 5th Street, and on the west by I-95. An aerial map showing the project location is enclosed.

Also enclosed is a summary of the development program in table form showing the proposed land uses and amounts pursuant to the guidelines and standards in Chapter 28-24, F.A.C. Increment I and II which were originally approved in 1988 and 1992 respectively, and Increment III, which is currently being proposed, specify the type and intensity of land use in the SEOPW area for the next 10 years. We will notify you if the development program for Increment III is adjusted.

Please indicate in your response whether or not your present facilities and staffing are capable of serving the Project. If not, please specify the additional staffing/equipment necessary to do so.

Your written response will be an integral part of the DRI application process. I respectfully request your prompt attention to this letter.

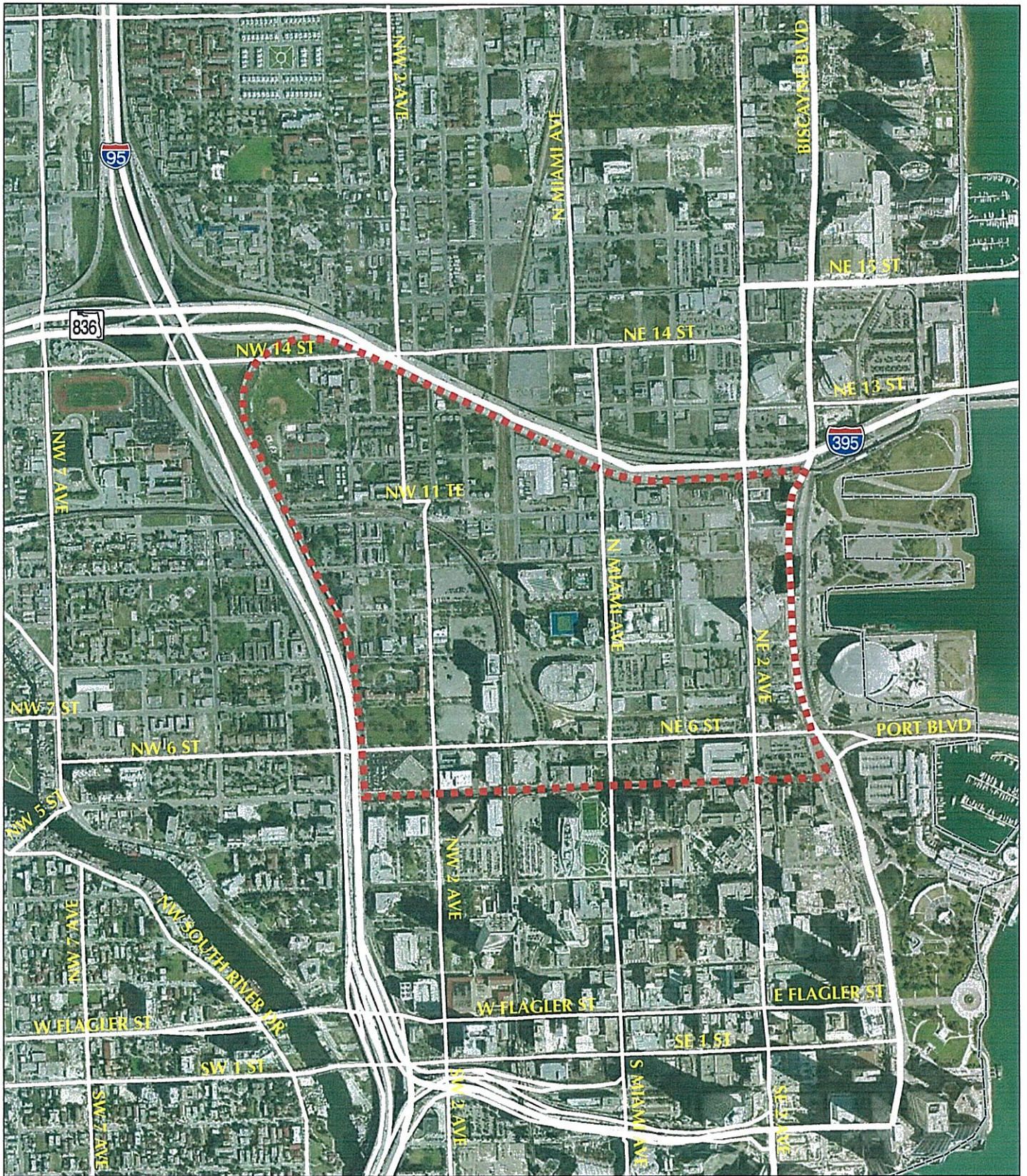
If you have any questions, please do not hesitate to call me at (305) 663 5800.

Thank you.


Sincerely,


NEHA SHINDE
Rob Curtis

Y:\USBDATA\PROJECTS\2008_03_SEOPW DRI\2008-03_Map B_Aerial Map.mxd



LEGEND

 Southeast Overtown Park West DRI Boundary



Source: Miami-Dade GIS 2008; Adapted by The Curtis Group, 2009
0 500 1000 2000 Feet

AERIAL MAP

SEOPW DRI - INCREMENT III

Table 1
SEOPW DRI - Proposed Development Program for Increment III

Use	Units	Increment III Proposed Development Program
Office	SF	2,300,000
Retail	SF	1,250,000
Residential	DU	4,000
Hotel	Rooms	2,100
Recreation	Seats	8,000
Convention	SF	200,000