

## Question 28 – Health Care

- A. Describe the health care services and facilities that will be required to meet the health needs generated by this project. Please provide a letter from the various providers acknowledging notice of the proposed development and ability to serve the project.**

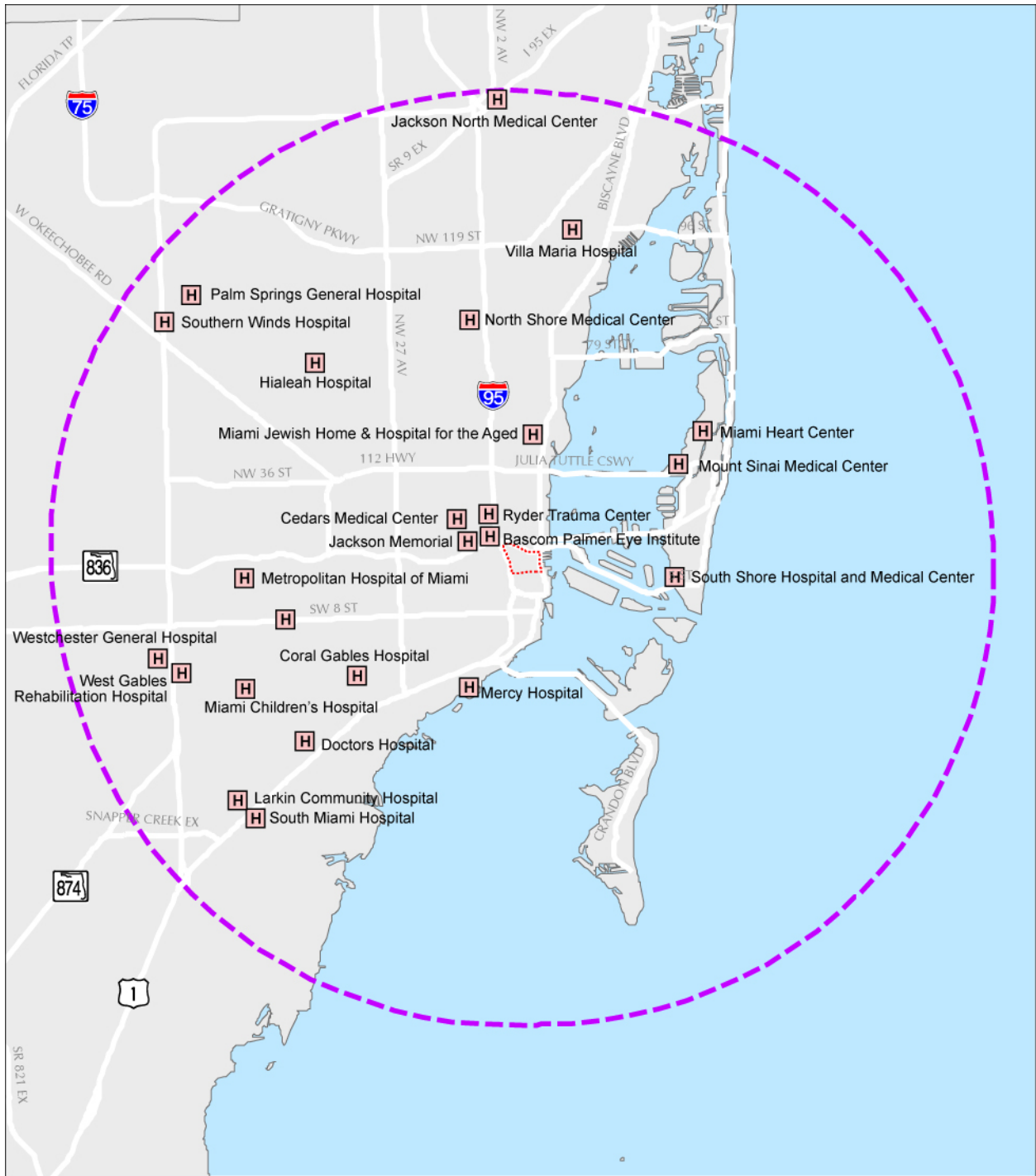
Twenty-five hospitals or admitting medical facilities are located within a 10-mile radius of the SEOPW DRI. **Table 28-1** Hospitals/Medical Facilities within a 10-mile Radius, provides a list of these hospitals. **Exhibit 28-1** Hospitals/Medical Facilities within a 10-mile Radius, depicts these hospital locations.

<b>Table 28-1 Hospital/Medical Facilities within a 10-Mile Radius</b>		
<b>Name</b>	<b>Address</b>	<b>Main</b>
Bascom Palmer Eye Institute	900 NW 17 <sup>th</sup> Street, Miami FL 33136	(305) 326-6000
Cedars Medical Center	1400 NW 12 <sup>th</sup> Avenue Miami, FL 33136	(305) 325-5407
Coral Gables Hospital	3100 S. Douglas Road Coral Gables, FL 33134	(305) 445-8461
Doctors' Hospital	5000 University Drive Coral Gables, FL 33146	(305) 666-2111
Hialeah Hospital	651 East 25 <sup>th</sup> Street Hialeah, FL 33013	(305) 693-6100
Jackson Memorial Hospital	1611 NW 12 <sup>th</sup> Avenue Miami, FL 33136	(305) 585-1111
Jackson North Medical Center	160 NW 170 <sup>th</sup> Street North Miami Beach, FL 33169	(305) 651-1100
Kindred Hosp South Florida Coral Gables	5190 SW 8 <sup>th</sup> Street Coral Gables, FL 33134	(305) 448-1585
Larkin Community Hospital	7031 SW 62 <sup>nd</sup> Avenue, South Miami, FL 33143	(305) 284-7500
Mercy Hospital	3663 South Miami Avenue Miami, FL 33133	(305) 854-4400
Miami Children's Hospital	3100 SW 62 <sup>nd</sup> Avenue Miami, FL 33155	(305) 666-6511
Miami Heart Institute & Medical Center	4701 North Meridian Avenue Miami, FL 33140	(305) 674-2800
Miami Jewish Home and Hospital for the Aged	5200 NE 2 <sup>nd</sup> Avenue Miami, FL 33137	(305) 756-6878
Mount Sinai Medical Center	4300 Alton Road Miami Beach, FL 33140	(305) 674-2121
North Shore Medical Center	1100 NW 95 <sup>th</sup> Street Miami, FL 33150	(305) 835-6000
Metropolitan Hospital of Miami	5959 NW 7 <sup>th</sup> Street Miami, FL 33126	(305) 264-1000
Palm Springs General Hospital	1475 West 49 <sup>th</sup> Place, Hialeah, Florida 33012	(305) 558-2500




Ryder Trauma Center	1800 NW 10 <sup>th</sup> Avenue Miami, FL 33136	(305) 585-1292
South Miami Hospital	6200 SW 73 <sup>rd</sup> Street Miami, FL 33143	(786) 662-4000
South Shore Hospital & Medical Center	630 Alton Road Miami Beach, FL 33139	(305) 532-7246
Southern Winds Hospital	4225 West 20 <sup>th</sup> Avenue Hialeah, FL 33012	(305) 558-9700
Veterans Affairs Medical Center	1201 NW 16 <sup>th</sup> Street Miami, FL 33125	(305) 575-7000
Villa Maria Hospital	1050 NE 125 <sup>th</sup> Street North Miami, FL 33161	(305) 891-8850
Westchester General Hospital	2500 SW 75 <sup>th</sup> Avenue Miami, FL 33155	(305) 264-5252
West Gables Rehabilitation Hospital	2525 SW 75 <sup>th</sup> Avenue Miami, FL 33155	(305) 262-6800

Five major health service providers in close proximity were notified about the development program for the Increment II of the SEOPW DRI: 1) Cedars Medical Center, 2) Jackson Memorial Hospital, 3) Mercy Hospital, 4) Mount Sinai Medical Center, and 5) Veterans Affairs Medical Center, and included under **Exhibit 28-2** Letters to Major Health Service Providers.

Emergency medical services are provided by the City of Miami Fire-Rescue Department. **Exhibit 28-3** Letters to and from the City of Miami Fire-Rescue Department, addresses the Department's ability to serve the project.



**LEGEND**

-  Southeast Overtown Park West DRI Boundary
-  10-mile Buffer
-  Hospitals/Medical Facilities

Source: Miami-Dade GIS 2008; Adapted by The Curtis Group, 2010  
 0 1.75 3.5 7 Miles

**EXHIBIT 28-1  
 HOSPITALS/MEDICAL FACILITIES WITHIN A 10-MILE RADIUS**

SEOPW DRI - INCREMENT III

**Exhibit 28-2**  
**LETTERS TO MAJOR HEALTH SERVICE PROVIDERS**

Jesus Sardinias, Director  
Mercy Hospital  
Facilities Management  
3663 South Miami Avenue  
Miami, Florida 33133

Re: Southeast Overtown Park West DRI Update  
Health Care Services

Dear Mr. Sardinias:

In accordance with Chapter 380.06, Florida Statutes, regarding Developments of Regional Impact (DRI), we are required to notify local health care service providers and obtain information from them information regarding their ability to provide our project with health care services.

The Southeast Overtown Park West Community Redevelopment Agency and the City of Miami as co-applicants are applying for the approval of Increment III of the Southeast Overtown Park West Development of Regional Impact (SEOPW DRI). The purpose of the DRI is to simplify and expedite the process for the impact review of large-scale development. The DRI is a Master Incremental DRI that establishes a development program that specifies the total amount of development that can be located anywhere within the DRI boundaries, subject to local land development regulations.

The SEOPW DRI area contains approximately 209 acres of urban development, and is generally bounded on the north by I-395, on the east by Biscayne Boulevard, on the south by NW/NE 5<sup>th</sup> Street, and on the west by I-95. An aerial map showing the project location is enclosed.

Also enclosed is a summary of the development program in table form showing the proposed land uses and amounts pursuant to the guidelines and standards in Chapter 28-24, F.A.C. Increment I and II which were originally approved in 1988 and 1992 respectively, and Increment III, which is currently being proposed, specify the type and intensity of land use in the SEOPW area for the next 10 years. We will notify you if the development program for Increment III is adjusted.

Please indicate in your response your facility's capacity for serving our proposed development program, given your present and future projections for facilities and staffing. Please note that we have also notified other surrounding health providers regarding their capacity to serve the SEOPW DRI.

Your written response will be an integral part of the DRI application process. I respectfully request your prompt attention to this letter.

If you have any questions, please do not hesitate to call me at (305) 663 5800.

Thank you.

Sincerely,



Neha Shinde

xc: file

Roland Rivero, Director  
University of Miami Hospital  
Facilities Management  
1400 N.W. 12 Avenue  
Miami, Florida 33136

Re: Southeast Overtown Park West DRI Update  
Health Care Services

Dear Mr. Rivero:

In accordance with Chapter 380.06, Florida Statutes, regarding Developments of Regional Impact (DRI), we are required to notify local health care service providers and obtain information from them information regarding their ability to provide our project with health care services.

The Southeast Overtown Park West Community Redevelopment Agency and the City of Miami as co-applicants are applying for the approval of Increment III of the Southeast Overtown Park West Development of Regional Impact (SEOPW DRI). The purpose of the DRI is to simplify and expedite the process for the impact review of large-scale development. The DRI is a Master Incremental DRI that establishes a development program that specifies the total amount of development that can be located anywhere within the DRI boundaries, subject to local land development regulations.

The SEOPW DRI area contains approximately 209 acres of urban development, and is generally bounded on the north by I-395, on the east by Biscayne Boulevard, on the south by NW/NE 5<sup>th</sup> Street, and on the west by I-95. An aerial map showing the project location is enclosed.

Also enclosed is a summary of the development program in table form showing the proposed land uses and amounts pursuant to the guidelines and standards in Chapter 28-24, F.A.C. Increment I and II which were originally approved in 1988 and 1992 respectively, and Increment III, which is currently being proposed, specify the type and intensity of land use in the SEOPW area for the next 10 years. We will notify you if the development program for Increment III is adjusted.

Please indicate in your response your facility's capacity for serving our proposed development program, given your present and future projections for facilities and staffing. Please note that we have also notified other surrounding health providers regarding their capacity to serve the SEOPW DRI.

Your written response will be an integral part of the DRI application process. I respectfully request your prompt attention to this letter.

If you have any questions, please do not hesitate to call me at (305) 663 5800.

Thank you.

Sincerely,



Neha Shinde

Anthony Kaniewski, Director  
Facilities Administration  
Jackson Memorial Hospital  
1400 N.W. 10 Avenue  
Miami, Florida 33136

Re: Southeast Overtown Park West DRI Update  
Health Care Services

Dear Mr. Kaniewski:

In accordance with Chapter 380.06, Florida Statutes, regarding Developments of Regional Impact (DRI), we are required to notify local health care service providers and obtain information from them information regarding their ability to provide our project with health care services.

The Southeast Overtown Park West Community Redevelopment Agency and the City of Miami as co-applicants are applying for the approval of Increment III of the Southeast Overtown Park West Development of Regional Impact (SEOPW DRI). The purpose of the DRI is to simplify and expedite the process for the impact review of large-scale development. The DRI is a Master Incremental DRI that establishes a development program that specifies the total amount of development that can be located anywhere within the DRI boundaries, subject to local land development regulations.

The SEOPW DRI area contains approximately 209 acres of urban development, and is generally bounded on the north by I-395, on the east by Biscayne Boulevard, on the south by NW/NE 5<sup>th</sup> Street, and on the west by I-95. An aerial map showing the project location is enclosed.

Also enclosed is a summary of the development program in table form showing the proposed land uses and amounts pursuant to the guidelines and standards in Chapter 28-24, F.A.C. Increment I and II which were originally approved in 1988 and 1992 respectively, and Increment III, which is currently being proposed, specify the type and intensity of land use in the SEOPW area for the next 10 years. We will notify you if the development program for Increment III is adjusted.

Please indicate in your response your facility's capacity for serving our proposed development program, given your present and future projections for facilities and staffing. Please note that we have also notified other surrounding health providers regarding their capacity to serve the SEOPW DRI.

Your written response will be an integral part of the DRI application process. I respectfully request your prompt attention to this letter.

If you have any questions, please do not hesitate to call me at (305) 663 5800.

Thank you.

Sincerely,



Neha Shinde

xc: file

Phil Miller, Director of Engineering  
Mt. Sinai Hospital  
4300 Alton Road  
Miami Beach, Florida 33140

Re: Southeast Overtown Park West DRI Update  
Health Care Services

Dear Mr. Miller:

In accordance with Chapter 380.06, Florida Statutes, regarding Developments of Regional Impact (DRI), we are required to notify local health care service providers and obtain information from them information regarding their ability to provide our project with health care services.

The Southeast Overtown Park West Community Redevelopment Agency and the City of Miami as co-applicants are applying for the approval of Increment III of the Southeast Overtown Park West Development of Regional Impact (SEOPW DRI). The purpose of the DRI is to simplify and expedite the process for the impact review of large-scale development. The DRI is a Master Incremental DRI that establishes a development program that specifies the total amount of development that can be located anywhere within the DRI boundaries, subject to local land development regulations.

The SEOPW DRI area contains approximately 209 acres of urban development, and is generally bounded on the north by I-395, on the east by Biscayne Boulevard, on the south by NW/NE 5<sup>th</sup> Street, and on the west by I-95. An aerial map showing the project location is enclosed.

Also enclosed is a summary of the development program in table form showing the proposed land uses and amounts pursuant to the guidelines and standards in Chapter 28-24, F.A.C. Increment I and II which were originally approved in 1988 and 1992 respectively, and Increment III, which is currently being proposed, specify the type and intensity of land use in the SEOPW area for the next 10 years. We will notify you if the development program for Increment III is adjusted.

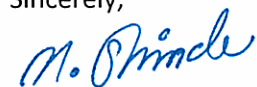
Please indicate in your response your facility's capacity for serving our proposed development program, given your present and future projections for facilities and staffing. Please note that we have also notified other surrounding health providers regarding their capacity to serve the SEOPW DRI.

Your written response will be an integral part of the DRI application process. I respectfully request your prompt attention to this letter.

If you have any questions, please do not hesitate to call me at (305) 663 5800.

Thank you.

Sincerely,



Neha Shinde

xc: file



Robert Fasco, Supervisor for Planning  
Miami Veterans Affairs Medical Center  
Office of Construction and Facilities Management  
1201 N.W. 16 Street  
Miami, Florida 331250

Re: Southeast Overtown Park West DRI Update  
Health Care Services

Dear Mr. Fasco:

In accordance with Chapter 380.06, Florida Statutes, regarding Developments of Regional Impact (DRI), we are required to notify local health care service providers and obtain information from them information regarding their ability to provide our project with health care services.

The Southeast Overtown Park West Community Redevelopment Agency and the City of Miami as co-applicants are applying for the approval of Increment III of the Southeast Overtown Park West Development of Regional Impact (SEOPW DRI). The purpose of the DRI is to simplify and expedite the process for the impact review of large-scale development. The DRI is a Master Incremental DRI that establishes a development program that specifies the total amount of development that can be located anywhere within the DRI boundaries, subject to local land development regulations.

The SEOPW DRI area contains approximately 209 acres of urban development, and is generally bounded on the north by I-395, on the east by Biscayne Boulevard, on the south by NW/NE 5<sup>th</sup> Street, and on the west by I-95. An aerial map showing the project location is enclosed.

Also enclosed is a summary of the development program in table form showing the proposed land uses and amounts pursuant to the guidelines and standards in Chapter 28-24, F.A.C. Increment I and II which were originally approved in 1988 and 1992 respectively, and Increment III, which is currently being proposed, specify the type and intensity of land use in the SEOPW area for the next 10 years. We will notify you if the development program for Increment III is adjusted.

Please indicate in your response your facility's capacity for serving our proposed development program, given your present and future projections for facilities and staffing. Please note that we have also notified other surrounding health providers regarding their capacity to serve the SEOPW DRI.

Your written response will be an integral part of the DRI application process. I respectfully request your prompt attention to this letter.

If you have any questions, please do not hesitate to call me at (305) 663 5800.

Thank you.

Sincerely,



Neha Shinde

xc: file

COMPREHENSIVE DEVELOPMENT PLANNING

**Exhibit 28-3**  
**FIRE SERVICE PROVIDER LETTER**

# City of Miami



CARLOS A. MIGOYA  
City Manager

October 8, 2010

Rob Curtis  
The Curtis Group  
7520 Red Road, Suite M  
South Miami, FL 33143

**RE: SOUTHEAST OVERTOWN PARK WEST DRI UPDATE  
FIRE AND EMERGENCY RESPONSE SERVICES**

Dear Mr. Curtis:

We have received your letter referencing the application for approval of Increment III of the Southeast Overtown Park West Development Impact. Pursuant to your request we have evaluated the information included and have deduced that the totality of the increased development will have a significant impact to our current service delivery model.

In order to maintain service levels we have concluded that in addition to maintaining current units and daily staffing levels of 149 firefighters, the following additional units and required associated staffing is required:

One Aerial (Ladder Truck)

We are anxious and pleased to see the projected development for this area and will actively participate in every effort to see it become a reality. Should you have any questions please contact Deputy Chief Reginald K. Duren at 305.416.5403.

Sincerely,

Maurice L. Kemp  
Miami Fire Chief

MLK/RD/acp

Mr. Maurice Kemp, Chief  
City of Miami  
Department of Fire-Rescue  
1151 NW 7<sup>th</sup> Street  
Miami, Florida 33136

Re: Southeast Overtown Park West DRI Update  
Fire and Emergency Response Services

Dear Chief Kemp:

In accordance with Chapter 380.06, Florida Statutes, regarding Developments of Regional Impact (DRI), we are required to obtain information from the City of Miami Department of Fire-Rescue regarding its ability to provide our project with fire and emergency response services.

The Southeast Overtown Park West Community Redevelopment Agency and the City of Miami as co-applicants are applying for the approval of Increment III of the Southeast Overtown Park West Development of Regional Impact (SEOPW DRI). The purpose of the DRI is to simplify and expedite the process for the impact review of large-scale development. The DRI is a Master Incremental DRI that establishes a development program that specifies the total amount of development that can be located anywhere within the DRI boundaries, subject to local land development regulations.

The SEOPW DRI area contains approximately 209 acres of urban development, and is generally bounded on the north by I-395, on the east by Biscayne Boulevard, on the south by NW/NE 5<sup>th</sup> Street, and on the west by I-95. An aerial map showing the project location is enclosed.

Also enclosed is a summary of the development program in table form showing the proposed land uses and amounts pursuant to the guidelines and standards in Chapter 28-24, F.A.C. Increment I and II which were originally approved in 1988 and 1992 respectively, and Increment III, which is currently being proposed, specify the type and intensity of land use in the SEOPW area for the next 10 years. We will notify you if the development program for Increment III is adjusted.

Please indicate in your response whether or not your present facilities and staffing are capable of serving the Project. If not, please specify the additional staffing/equipment necessary to do so.

Your written response will be an integral part of the DRI application process. I respectfully request your prompt attention to this letter.

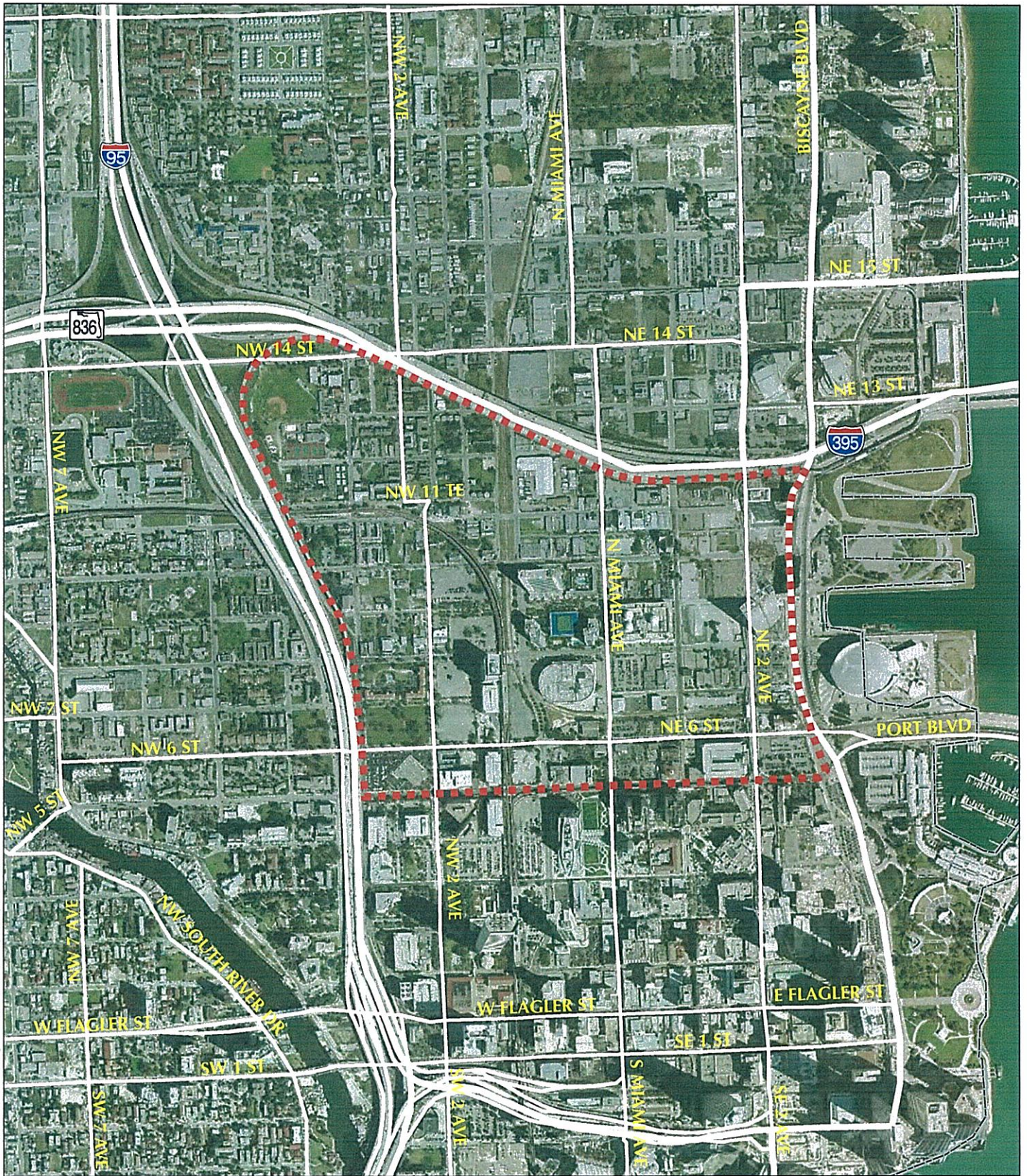
If you have any questions, please do not hesitate to call me at (305) 663 5800.

Thank you.


Sincerely,

  
NEHA SHINDE  
Rob Curtis

Y:\USBDATA\PROJECTS\2008\_03\_SEOPW DRI\2008-03\_Map B\_Aerial Map.mxd



**LEGEND**

 Southeast Overtown Park West DRI Boundary



Source: Miami-Dade GIS 2008; Adapted by The Curtis Group, 2009  
0 500 1000 2000 Feet

**AERIAL MAP**

SEOPW DRI - INCREMENT III

**Table 1**  
**SEOPW DRI - Proposed Development Program for Increment III**

<b>Use</b>	<b>Units</b>	<b>Increment III Proposed Development Program</b>
Office	SF	2,300,000
Retail	SF	1,250,000
Residential	DU	4,000
Hotel	Rooms	2,100
Recreation	Seats	8,000
Convention	SF	200,000