



MEMORANDUM

AGENDA ITEM #7b

DATE: APRIL 7, 2008

TO: COUNCIL MEMBERS

FROM: STAFF

SUBJECT: CITY OF HOLLYWOOD ADOPTED COMPREHENSIVE PLAN AMENDMENT

Introduction

On March 5, 2008 Council staff received adopted amendment package #08-1ER to the City of Hollywood Comprehensive Plan for review of consistency with the *Strategic Regional Policy Plan for South Florida (SRPP)*. Proposed amendment #08-1ER (previously #08-2ER) was reviewed at the December 3, 2007 Council meeting and found to be generally consistent with the *Strategic Regional Policy Plan for South Florida*, with the exception of the Land Use Element. Staff review is undertaken pursuant to the Local Government Comprehensive Planning and Land Development Regulation Act, Chapter 163, Part II, Florida Statutes (F.S.), and Rules 9J-5 and 9J-11, Florida Administrative Code (F.A.C.).

Community Profile

Hollywood, the "Diamond of the Gold Coast," had an estimated population of 142,943 in 2007, a land area of 29.11 square miles, and a population density of 4,910 people per square mile. This is an increase of 2.6% from the population of 139,357 in the year 2000. Incorporated in 1925, Hollywood is a planned community developed by founder Joseph W. Young, who was also responsible for developing Port Everglades. His vision was for a city in which all economic classes could live together. A mature City, Hollywood has only 160 acres of vacant land on small parcels scattered throughout the City. The undeveloped land is designated for residential, commercial and industrial uses. Located strategically on the Atlantic Ocean between Miami and Fort Lauderdale, the City's economic base includes Port Everglades, tourism on its six miles of beach, and three medical centers. Hollywood has seen successful redevelopment in its downtown and through implementation of its Citywide Master Plan.

Additional information regarding the City or the Region may be found on the Council's website, www.sfrpc.com.

Summary of Staff Analysis

Adopted amendment package #08-1ER contains the text amendments to the City of Hollywood Comprehensive Plan as recommended by the 2005 Evaluation and Appraisal Report (EAR). The general location of the City is shown in Attachment 1.

The EAR-based amendments were adopted as proposed with minor revisions. In response to the Objections, Recommendation and Comments (ORC) Report issued by the Department of Community Affairs (DCA) and the objection raised by the South Florida Regional Planning Council, the City revised the Future Land Use Element to address the concern about development in its Coastal High Hazard Area. Specifically, the adopted EAR-based amendments remove Policy 10.4 that was encouraging high density development in the Beach and Downtown CRAs and add measure (f) to Policy 10.1 to provide CRA funding to existing deficiencies in public infrastructure and accommodate development according to the Future Land Use Map in the Beach CRA. Additional revisions are made in the Future Land Use Element, Transportation Element, Utilities Element, Intergovernmental Coordination Element, and Capital Improvement Element to address objections and comments raised by DCA and other reviewing agencies.

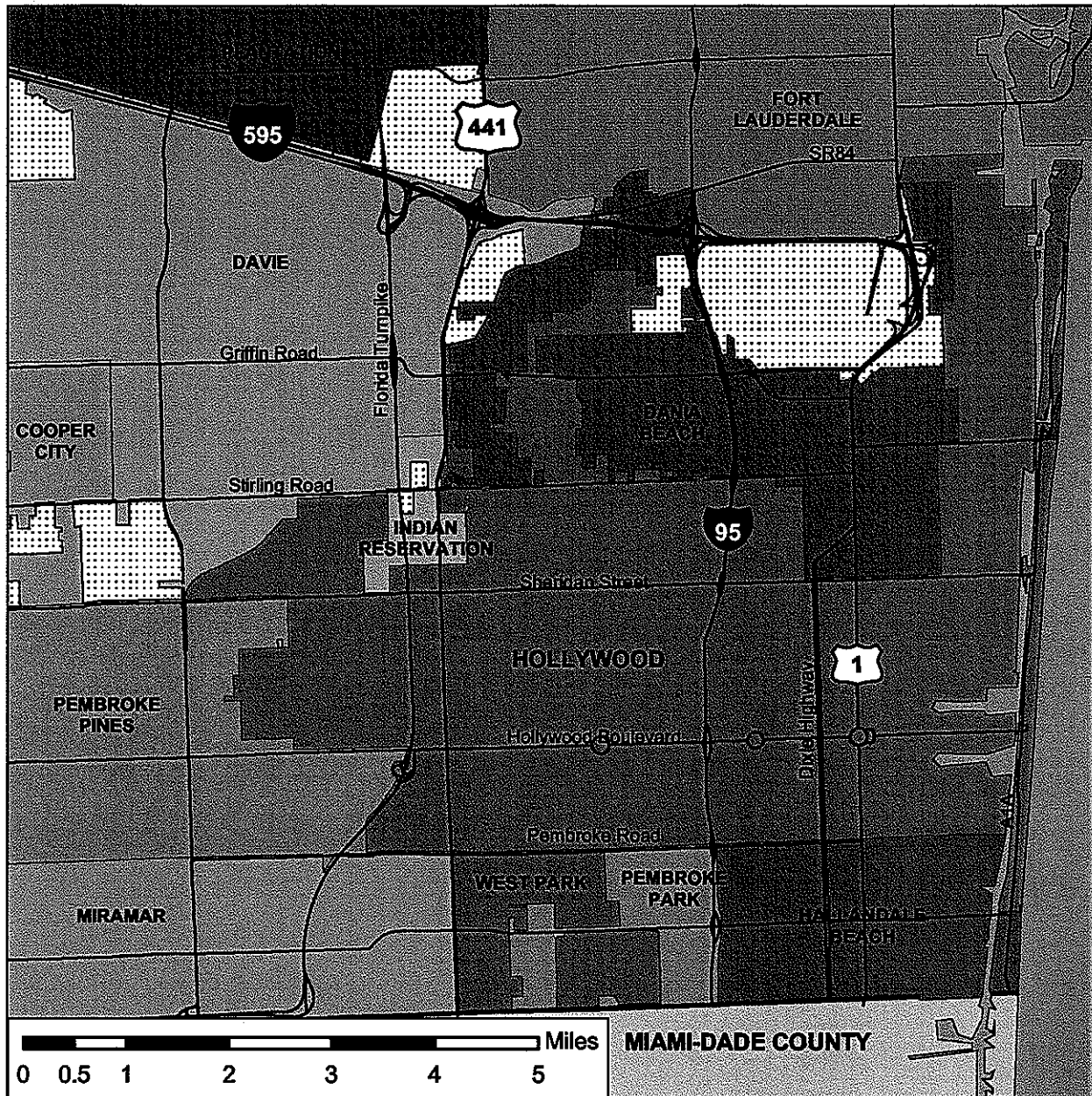
Staff analysis confirms that adopted amendment package #08-1ER is generally consistent with and supportive of the goals and policies *Strategic Regional Policy Plan for South Florida*.

The City Commission voted 7-0 to adopt the amendments and authorized the transmittal of the plan amendments to the Florida Department of Community Affairs for review at its February 20, 2008 meeting.

Recommendation

Find the City of Hollywood adopted amendment package #08-1ER generally consistent with the *Strategic Regional Policy Plan for South Florida*. Approve this staff report for transmittal to the Florida Department of Community Affairs.

Attachment 1



COMPREHENSIVE PLAN AMENDMENTS

Location Map

City of Hollywood
Adopted Amendment #08-1ER

Sources: FDEP, SFWMD, Broward County, SFRPC.

Note: For planning purposes only. All distances are approximate.