



The CCB: Working Together

The Broward Benchmarks

Selected Quality of Life Indicators

DRAFT

Prepared by the South Florida Regional Planning Council

December 2002



THE COORDINATING COUNCIL OF BROWARD

The CCB: Working Together

Area Agency on Aging
Edith Lederberg
Executive Director

Broward Alliance
Jim Tarlton
President/CEO

Broward County Government
Roger Desjarlais
County Administrator

Broward School Readiness Coalition
Penny Westbury
Executive Director

Broward Sheriff's Office
Kenneth C. Jenne
Sheriff

Catholic Charities
of the Archdiocese of Miami
Bishop Thomas G. Wenski
President

Children's Services Council
Cindy Arenberg
CEO

Department of Juvenile Justice
District 10
Rosie White
Manager

Family Central
Dr. Barbara Weinstein
President and CEO

Florida Atlantic University
Dr. Kenneth Wiant
Representative

Henderson Mental Health Center
Steve Ronik
CEO

North Broward Hospital District
Wil Trower
President/CEO

School Board of Broward County
Dr. Frank Till
Superintendent

Sun-Sentinel
Robert Gremillion
Publisher & President

Jewish Community of Broward County
Gary Siepser
President

United Way of Broward County
Robert MacConnell
President/CEO

Multicultural Board
Mary Macomber, Chair

Business Sector Representatives
Vic Beninate
Director of Corporate and External Affairs BellSouth
Business Systems
Stephen M. Queior
President – Greater Ft. Lauderdale Chamber of Commerce
Thomas H. Shea
Managing Principal - Right Management Consultants
CCB President and CEO
Robert "Skip" Johnston

December 6, 2002

Dear Broward Residents:

We are pleased to present *The Broward Benchmarks Selected Quality of Life Indicators*, a summary of the *Broward Benchmarks* report from The Coordinating Council of Broward (CCB). This allows provides a quick snapshot of the 300+ benchmarks, concentrating on areas most important to Broward's quality of life. The *Benchmarks* Report continues to break new ground on how well our citizen's needs are being met. Are our children getting the education they need to become self-sufficient and think critically? Do we feel safe in our homes, communities and workplaces? Does Broward have the jobs we need in order to prosper? Are we able to afford good healthcare? Is our air clean and our water supply adequate? How well are our local government services working? *The Broward Benchmarks Selected Quality of Life Indicators* highlights and answers such questions—and suggests where improvements are needed to better serve you.

The CCB works to help all residents to become more informed about our community, as we all work together to enhance the Quality of Life in Broward. By publishing *The Broward Benchmarks Selected Quality of Life Indicators* we assure a focused approach to identifying areas of strength and priorities requiring improvements to reach our established goals. This report is available on line today at www.theccb.org.

The CCB hopes that this Summary and the entire set of benchmarks and goals will help focus public attention on what needs to occur to make our community an even better place to live and work. Please accept our invitation to welcome all who want to challenge Broward to be the best place to live, work and play.

Sincerely,

Kathy Koch
Coordinating Council Chair

EXECUTIVE COMMITTEE

**Ambit Marketing
Communications**
Kathy Koch,
President
Council Chair

WorkForce One
Mason Jackson,
Executive Director
Council Vice Chair

**Broward County Health
Department**
David Roach,
Administrator
Secretary/Treasurer

Broward Community College
Dr. Willis Holcombe,
President
Immediate Past Chair

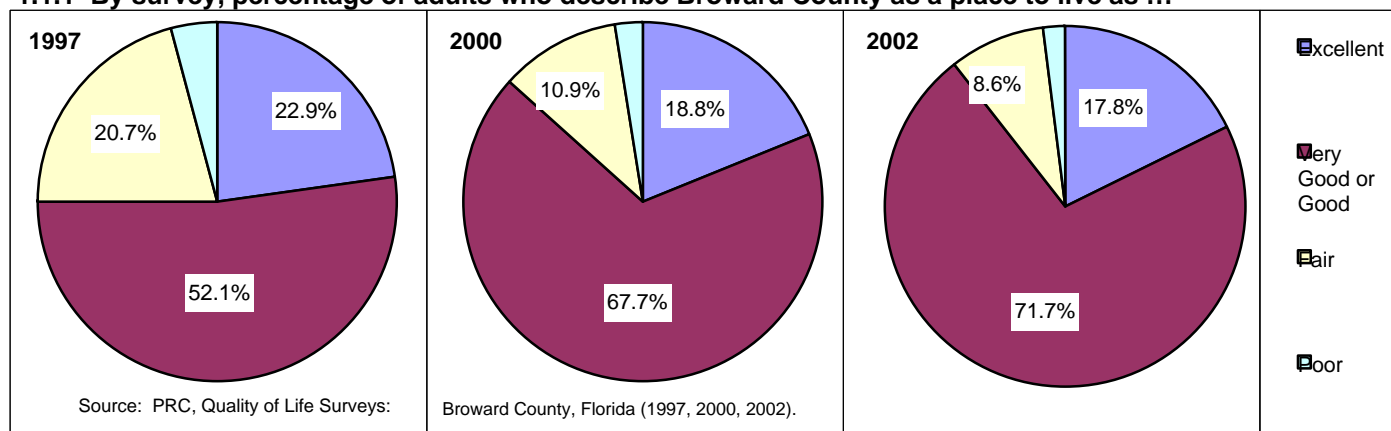
**Department of Children &
Families, District 10**
Jack Moss,
District Administrator
Member-at-Large

**Nova Southeastern
University**
Ray Ferrero, Jr., J.D.,
President
Member-at-Large

**Memorial Healthcare
System**
Frank V. Sacco,
CEO
Member-at-Large

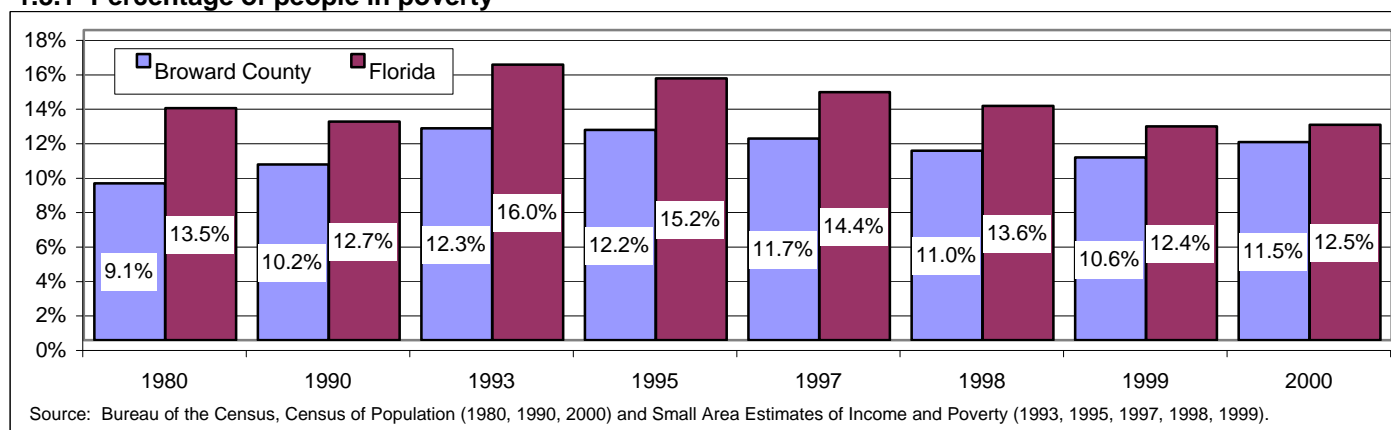
Our Families and Communities

1.1.1 By survey, percentage of adults who describe Broward County as a place to live as ...



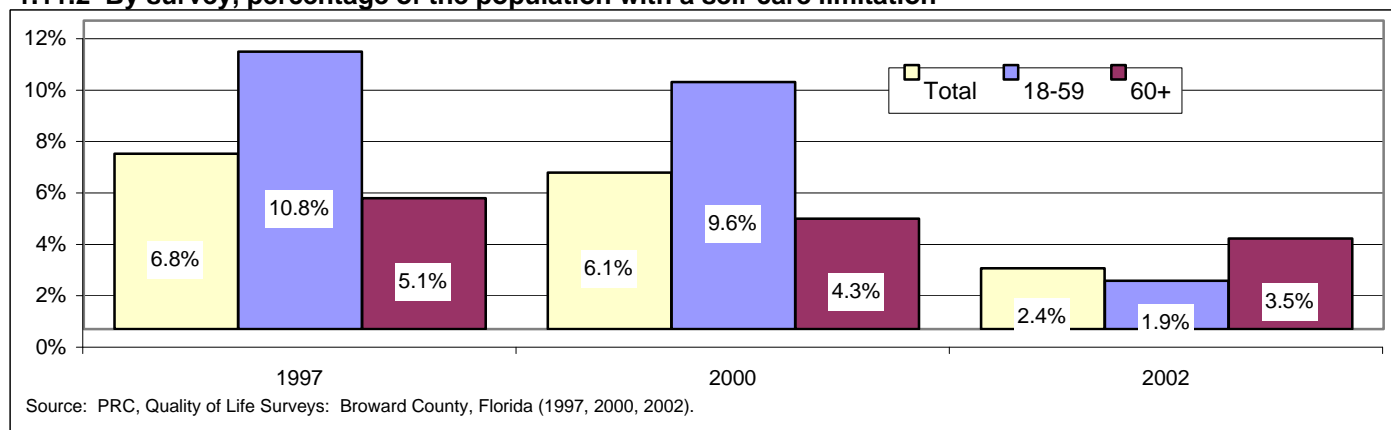
The percentage of residents who describe Broward County as a fair or poor place to live has declined over the 5-year period, from 25% in 1997 to 14.5% in 2000 and 10.5% in 2002.

1.3.1 Percentage of people in poverty



Poverty rates rose in Broward County and the State of Florida during the 1990s, peaking in 1993, at the end of a lengthy recession. Broward County's poverty rate is consistently lower than that of the State, but has moved closer to the State average.

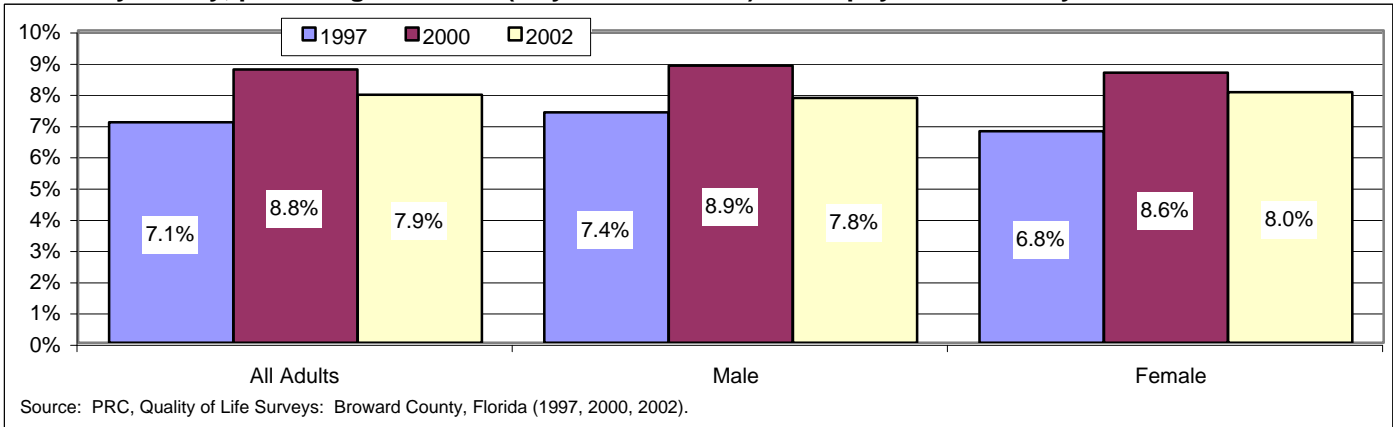
1.1.1.2 By survey, percentage of the population with a self-care limitation



The percentage of Broward County residents who reported self-care limitations fell from 6.8% in 1997 to 2.4% in 2002. Reductions occurred for both the elderly and younger adults. Further analysis is required to understand these reductions, especially for the elder population.

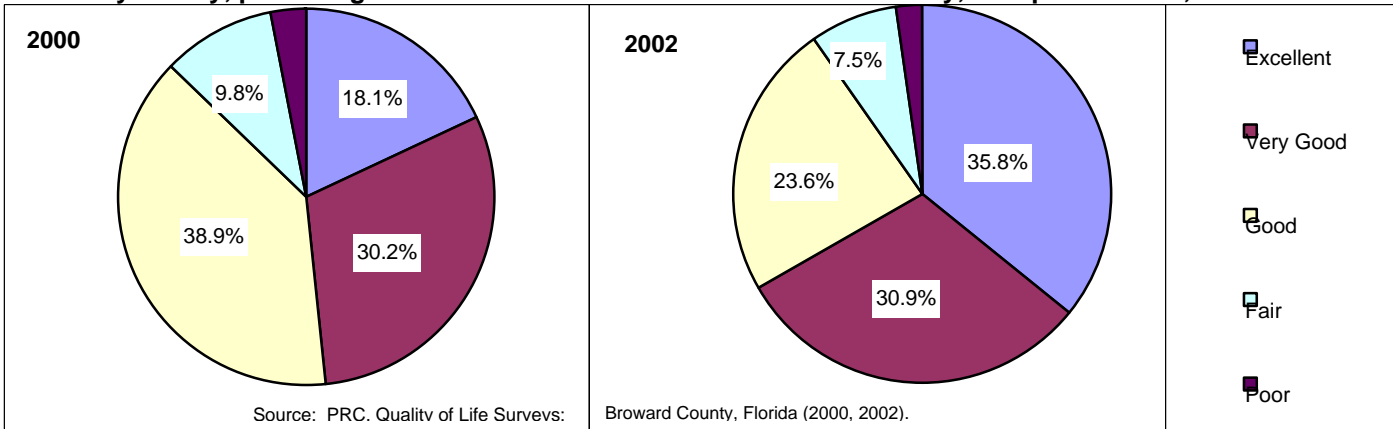
Our Families and Communities

1.12.4 By survey, percentage of adults (18 years and older) with a physical disability



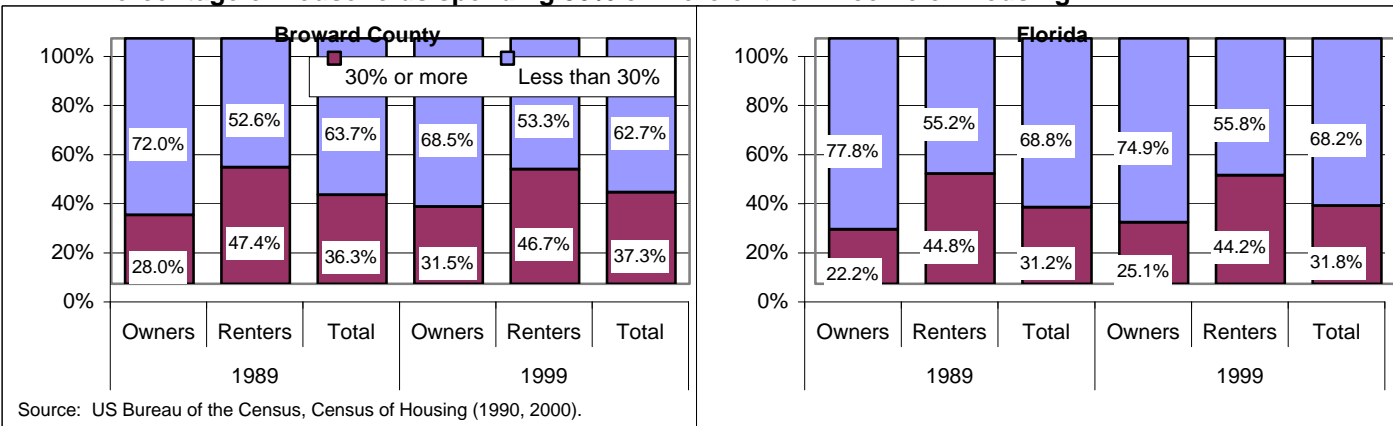
Approximately one in every 14 Broward County adults reported having a physical disability. There appears to be no significant variation by gender, and there has been little change in the rates over the 5-year period from 1997 to 2002.

1.13.1 By survey, percentage of adults who describe their local community, as a place to live, as ...



Almost half of Broward County adults described their "local community" as an excellent or very good place to live in 2000. Two-thirds of those surveyed in 2002 described their "neighborhood" as an excellent or very good place to live.

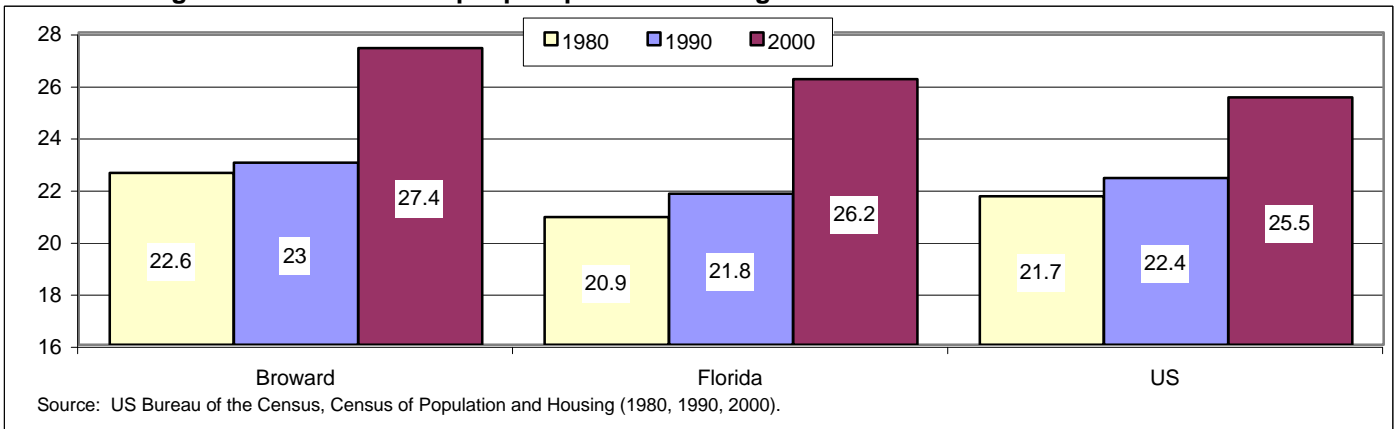
1.14.1 Percentage of households spending 30% or more of their income on housing



In 1999, 37.3% of Broward County residents spent 30% or more of their income on housing, up from 36.3% in 1989, and higher than the 31.8% average for the State of Florida. Almost half of Broward County renters spent 30% or more of their income on housing in 1999.

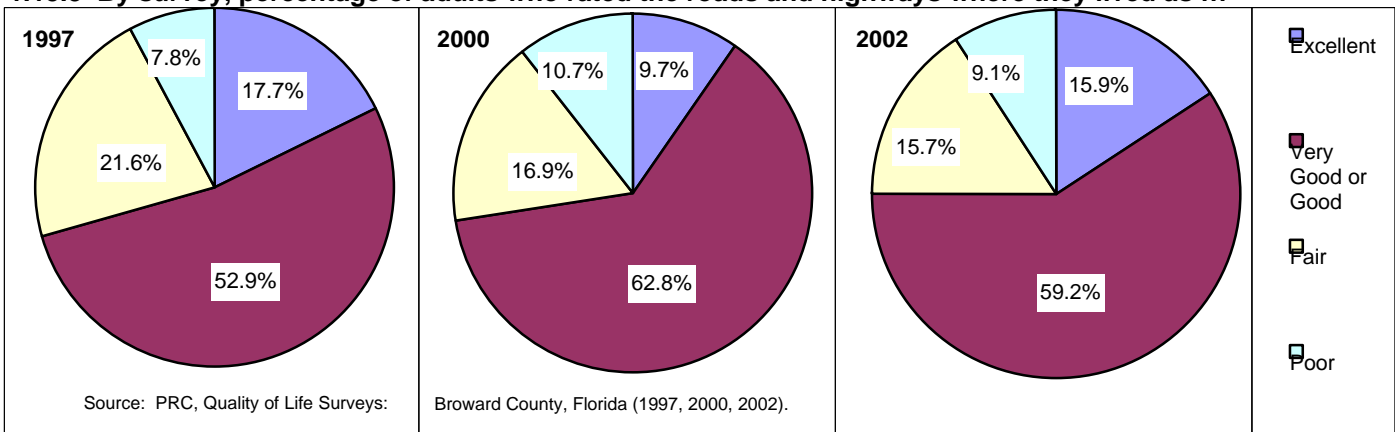
Our Families and Communities

1.15.2 Average number of minutes people spent commuting to work



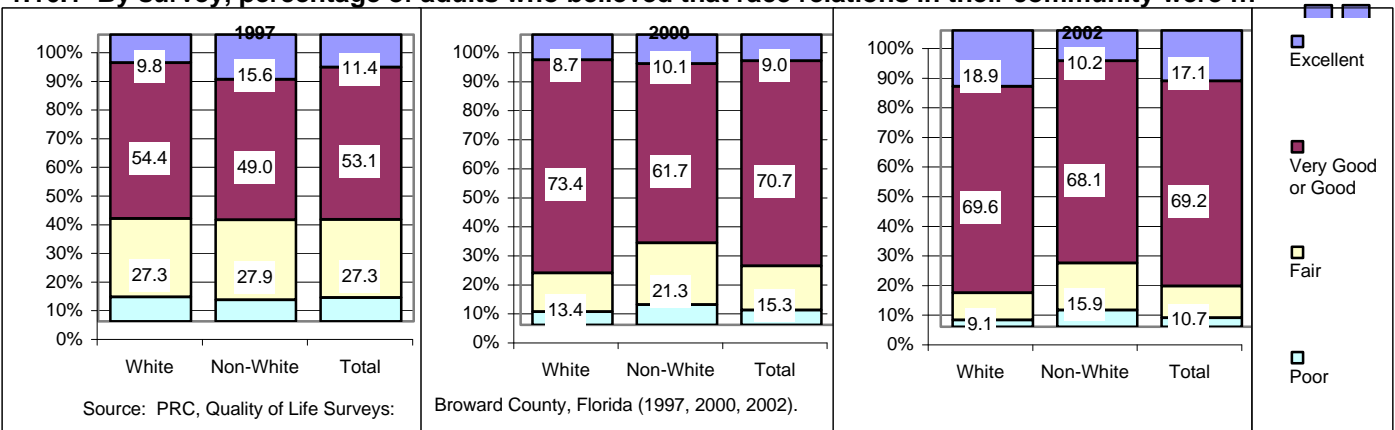
Increasing traffic congestion is a major quality of life issue in South Florida. Average commute times increased significantly between 1990 and 2000, from 23.0 to 27.4 minutes (19.1%). This is higher than the State of Florida and the US averages.

1.15.3 By survey, percentage of adults who rated the roads and highways where they lived as ...



One in four Broward County residents rate the roads and highways where they live as fair or poor. Since most Broward County roads are fairly new and are regularly resurfaced, this indicator likely reflects the use of roads (congestion) rather than roadway quality.

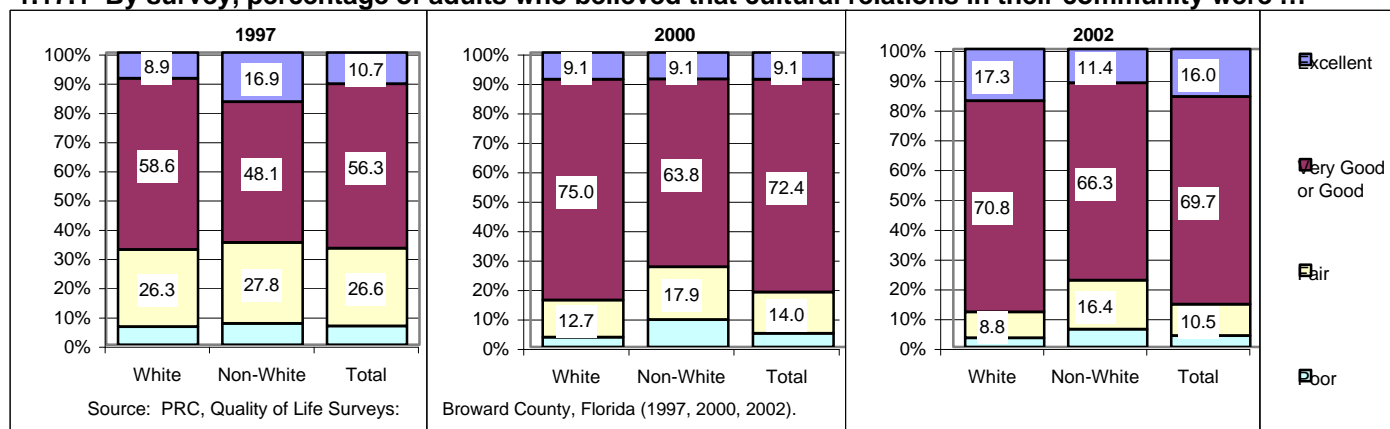
1.16.1 By survey, percentage of adults who believed that race relations in their community were ...



Both whites and non-whites believe that race relations improved between 1997 and 2002, but non-whites saw less improvement. The proportion rating them fair or poor fell from 35.8% to 11.5% among whites, and from 35.4% to 21.7% among non-whites.

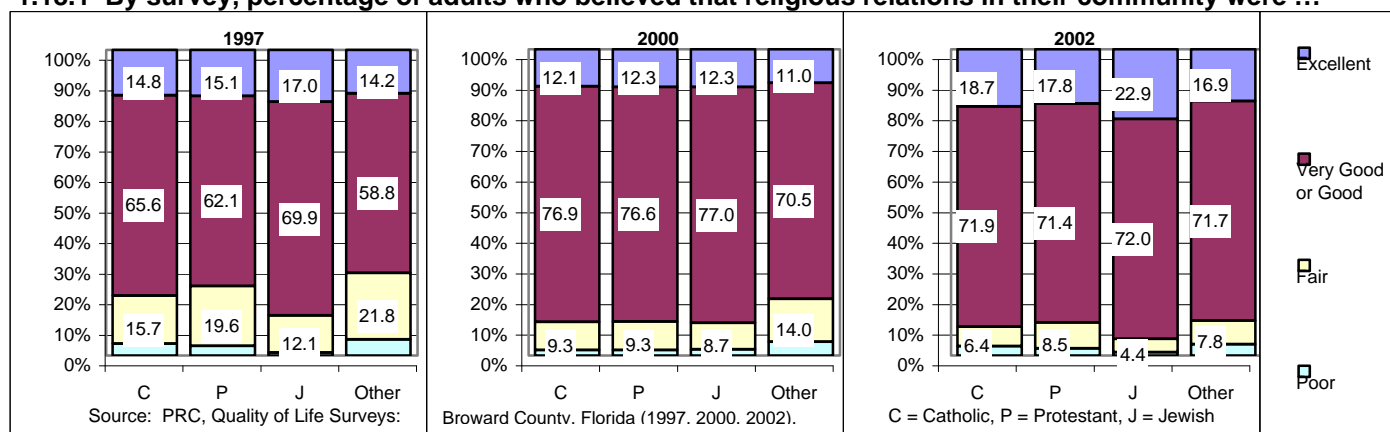
Our Families and Communities

1.17.1 By survey, percentage of adults who believed that cultural relations in their community were ...



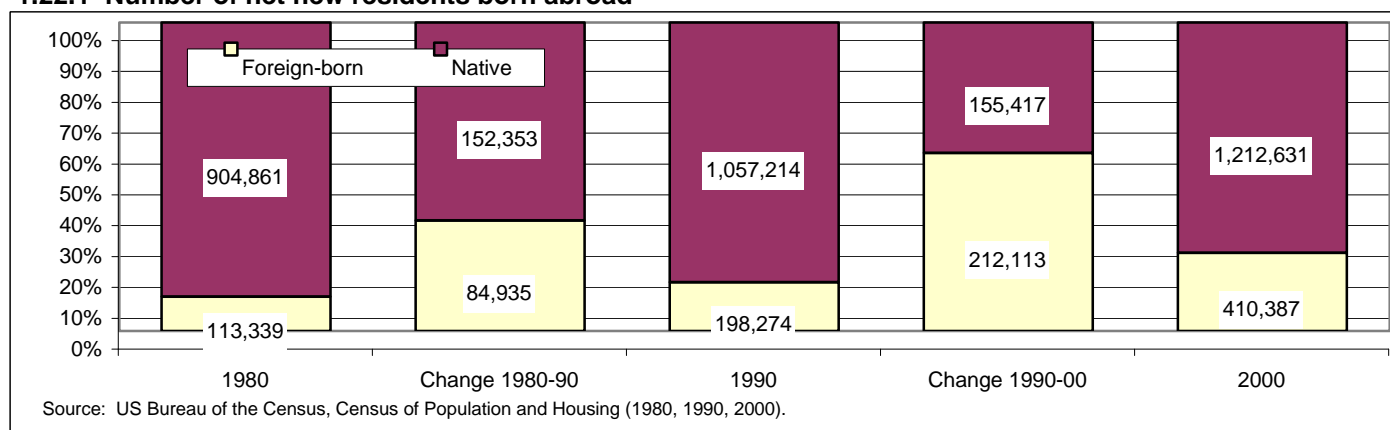
Both whites and non-whites believe that cultural relations improved between 1997 and 2002, but non-whites saw less improvement. The proportion rating them fair or poor fell from 34.5% to 11.9% among whites, and from 35.0% to 22.3% among non-whites.

1.18.1 By survey, percentage of adults who believed that religious relations in their community were ...



Broward County residents who identify themselves with the three major religions report good, very good or excellent (and improving) religious relations in the community. In 2002, fewer than one in ten residents felt that religious relations were fair or poor.

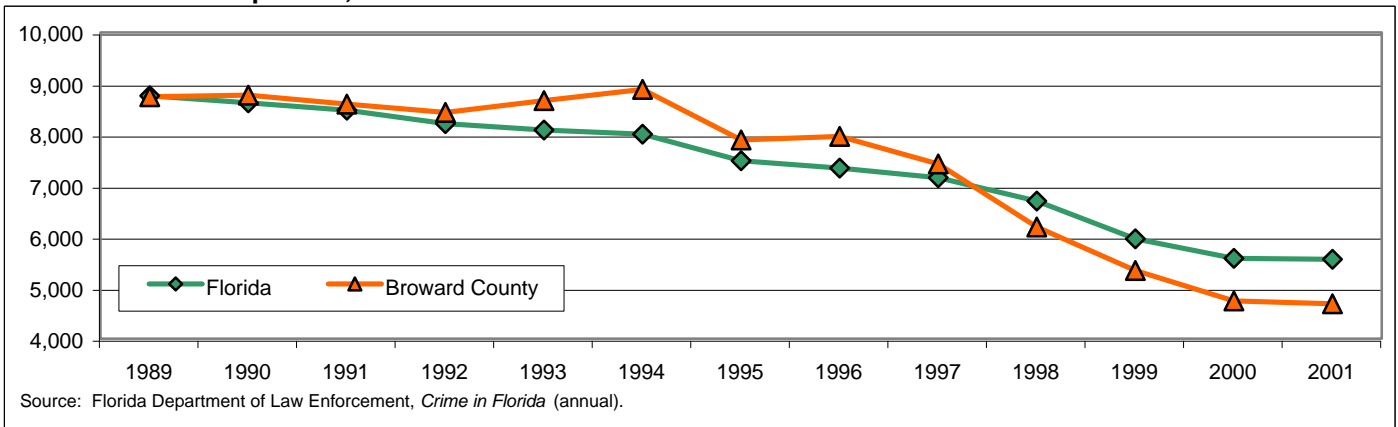
1.22.1 Number of net new residents born abroad



Between 1990 and 2000, Broward County had a net gain of 212,113 new foreign-born residents, almost 6 of every 10 new residents during the decade. In 2000, a quarter of the county's population was born abroad. This trend is expected to continue, making Broward County one of the most culturally diverse communities in the country.

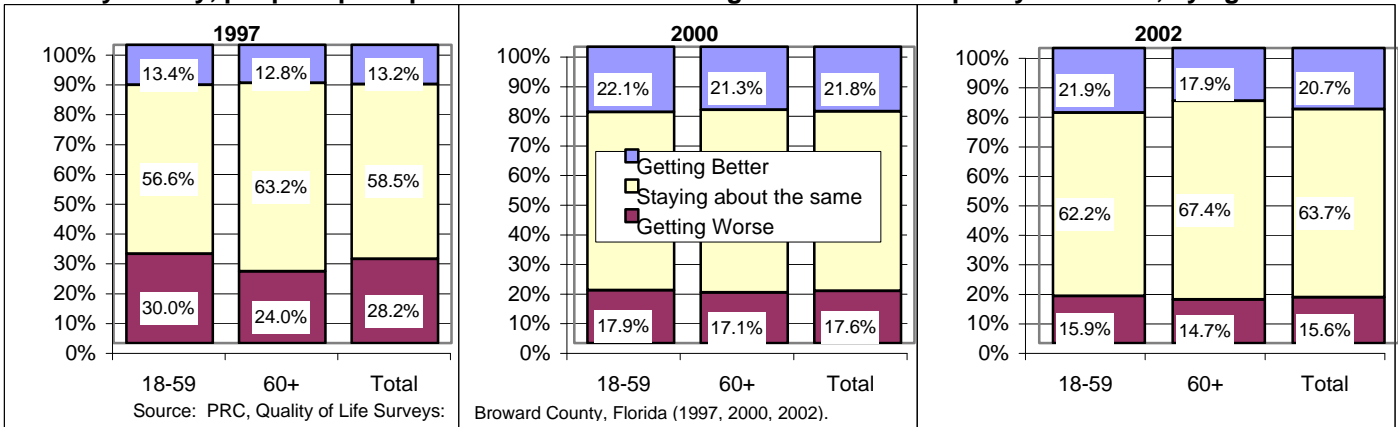
Our Safety

2.1.1 Index crimes per 100,000 residents



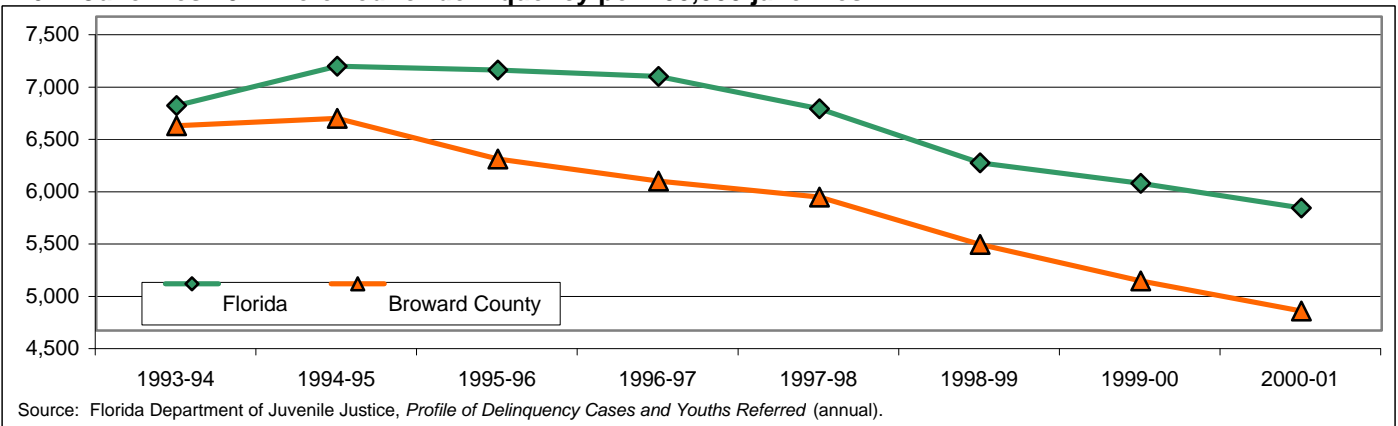
The crime rate for the most serious and violent offenses has continued a positive downward trend in Broward County that began in 1995. The reduction in the crime rate in Broward County is even greater than that experienced by the State of Florida.

2.3.1 By survey, people's perception of crime in their neighborhood in the past year or two, by age



Broward County residents' perception of crime has improved, in line with the observed decline in crime rates, and there appear to be no significant differences by age. Still, in 2002, one in seven residents felt that crime in their neighborhoods is getting worse.

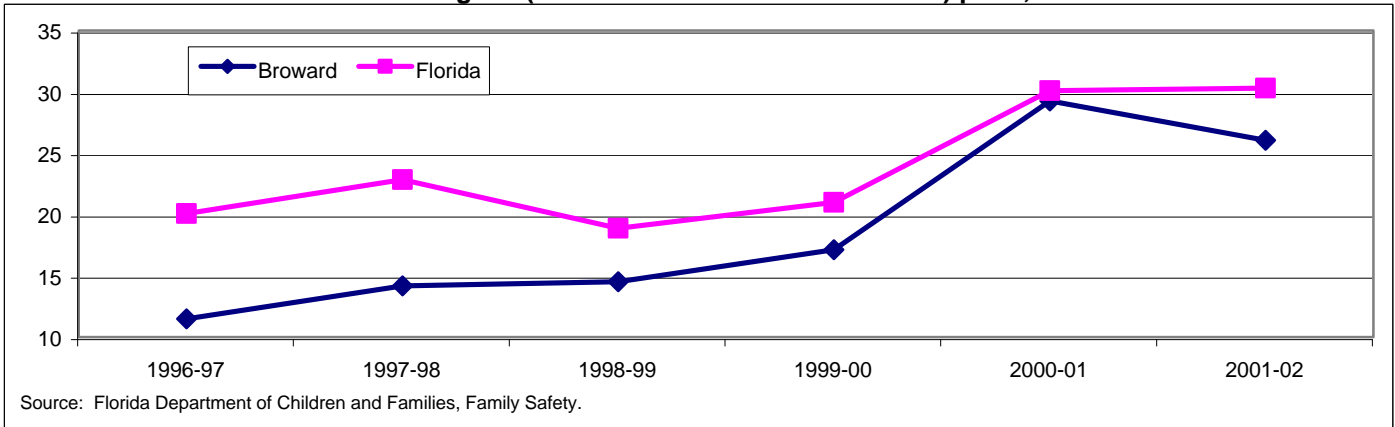
2.6.1 Juveniles 10-17 referred for delinquency per 100,000 juveniles



Juvenile delinquency referrals - a reflection of juvenile crime in general - continue to drop at precipitous rates on a statewide basis, but even more dramatically in Broward County. The county rate of juveniles referred has fallen by 36% since 1994-95.

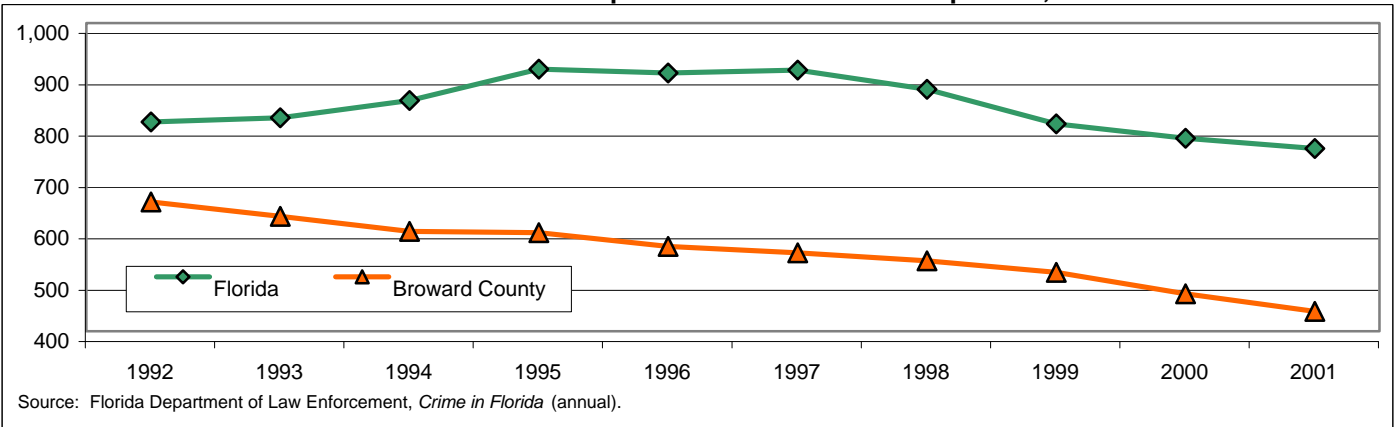
Our Safety

2.8.1 Victims of child abuse and neglect ("verified" and "some indication") per 1,000 children



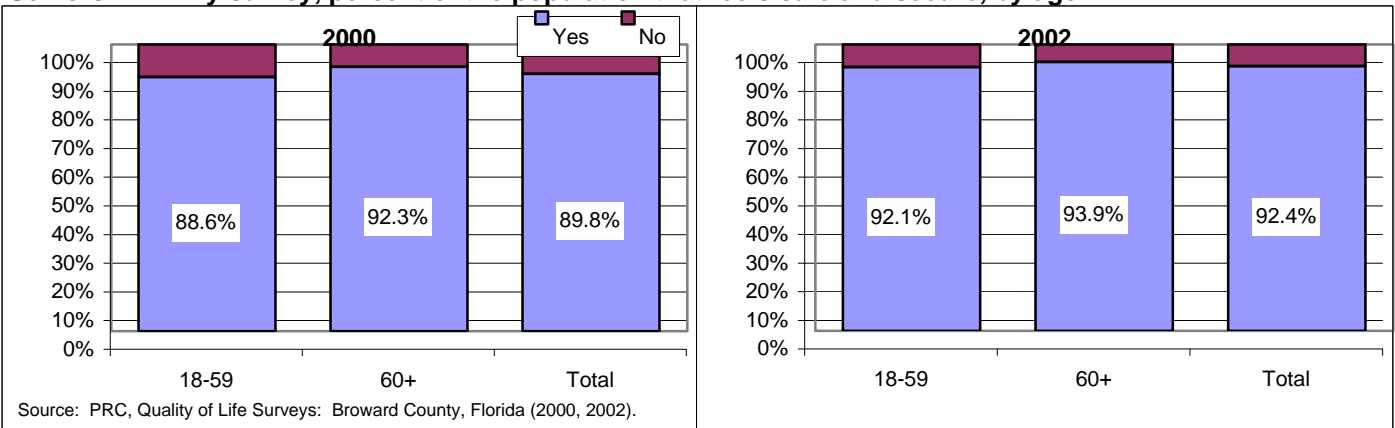
Rates of child abuse and neglect reported and verified, or with some indication, have risen over the last four years, both in Broward County and in the State of Florida. This is due in part to changes in the guidelines for reporting and for investigating the reports.

2.9.1 Number of domestic violence incidents reported to law enforcement per 100,000 residents



An increased focus - both locally as well as on a statewide basis - has led to a continued reduction in the number of reported domestic violence incidents. Broward County has seen a cumulative reduction in the rate of domestic violence of 33% since 1992.

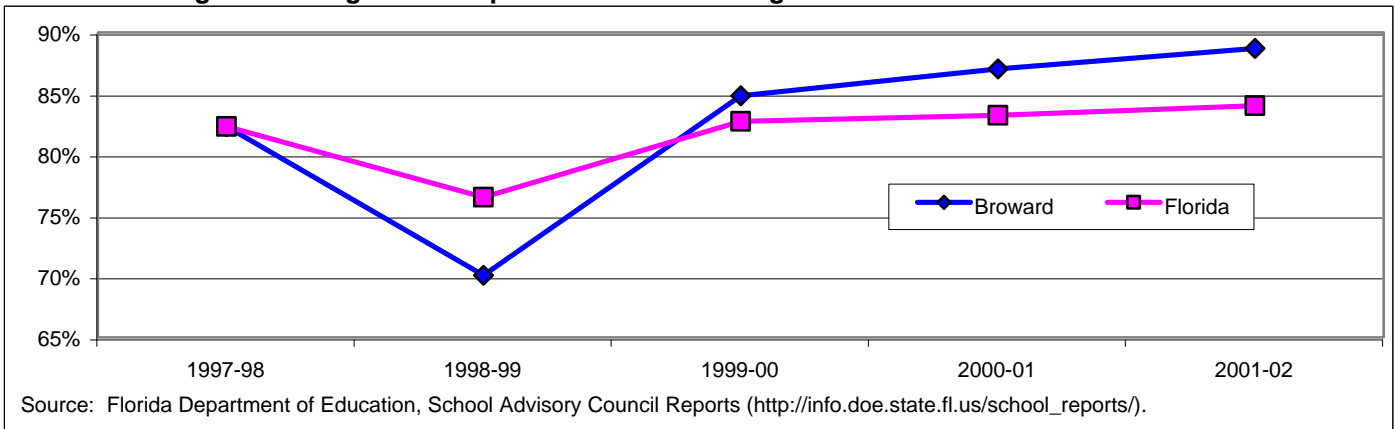
Seniors 2.2.1 By survey, percent of the population that feels safe and secure, by age



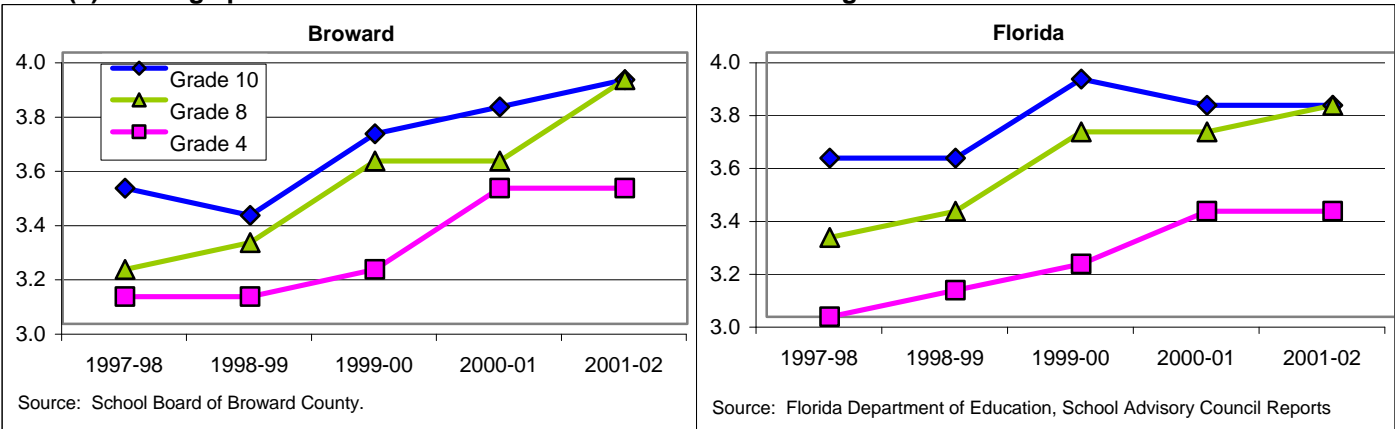
More than nine out of ten Broward County residents report feeling safe and secure, with a small improvement between 2000 and 2002. This result does not vary significantly between elderly respondents and young adults.

Our Learning

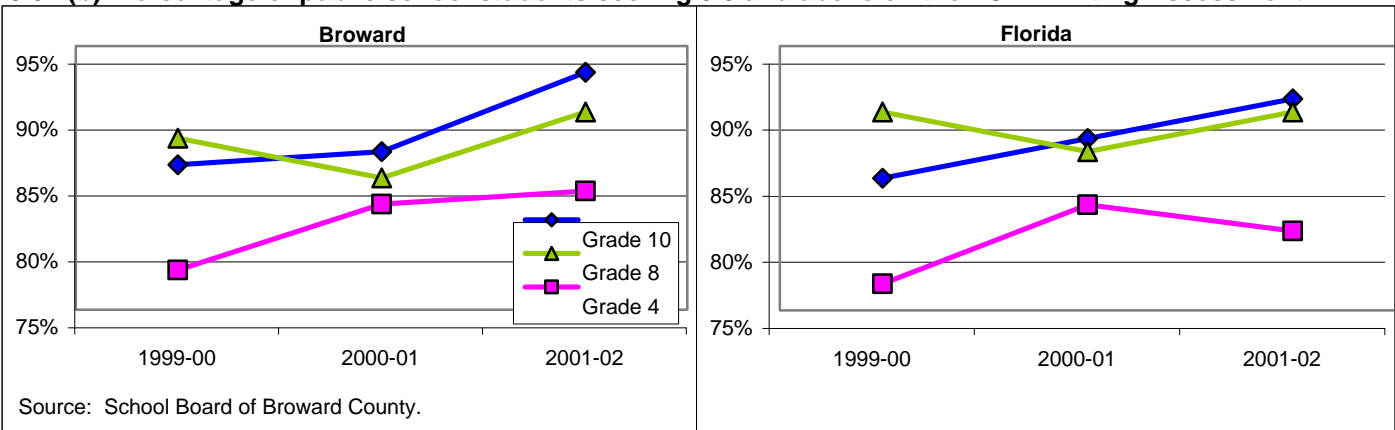
3.2.1 Percentage of kindergartners in public schools meeting state readiness standards



3.3.1(a) Average public school student scores on the FCAT Writing Assessment

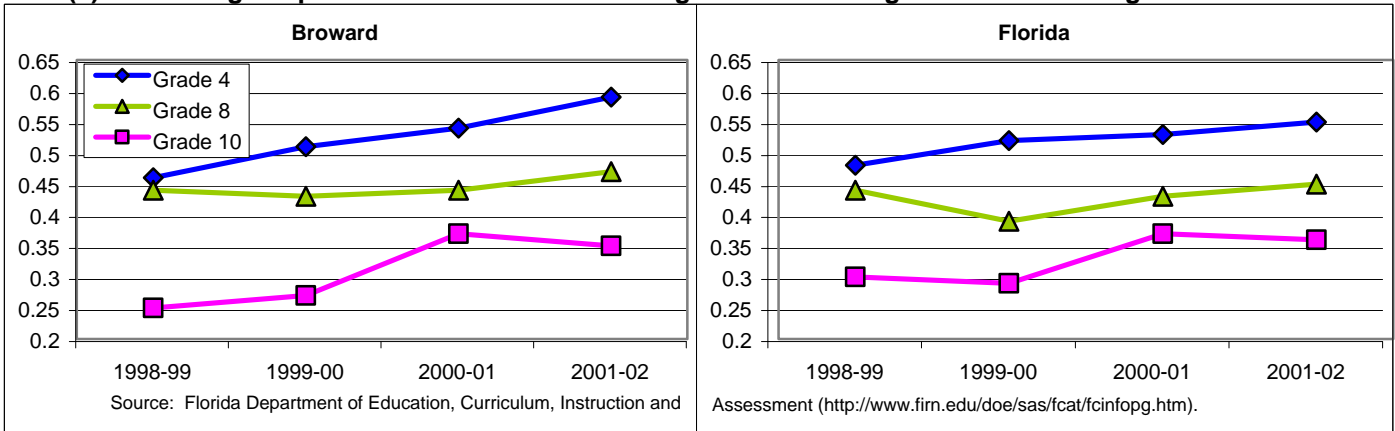


3.3.1(b) Percentage of public school students scoring 3.0 and above on the FCAT Writing Assessment

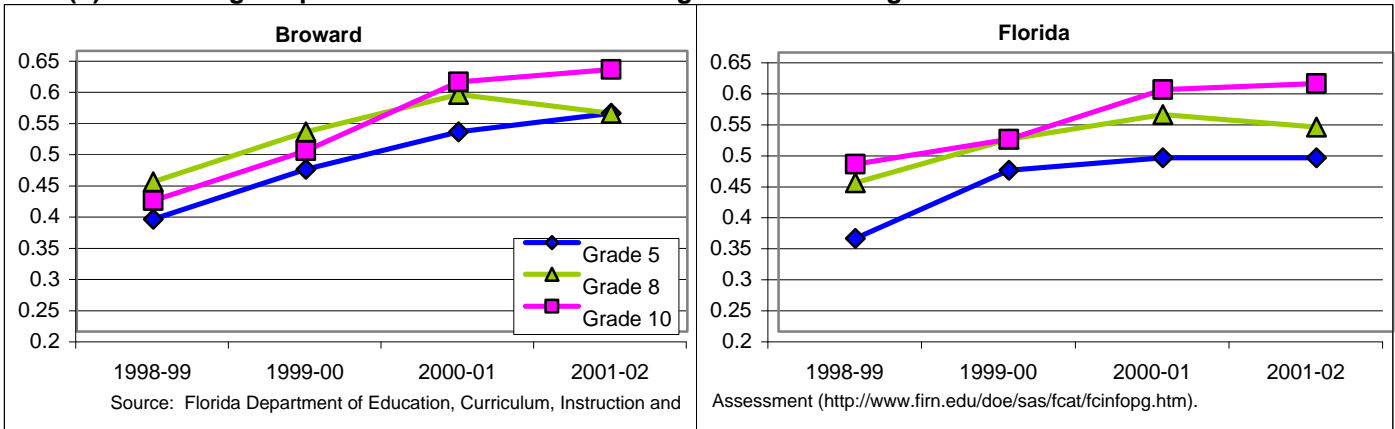


Our Learning

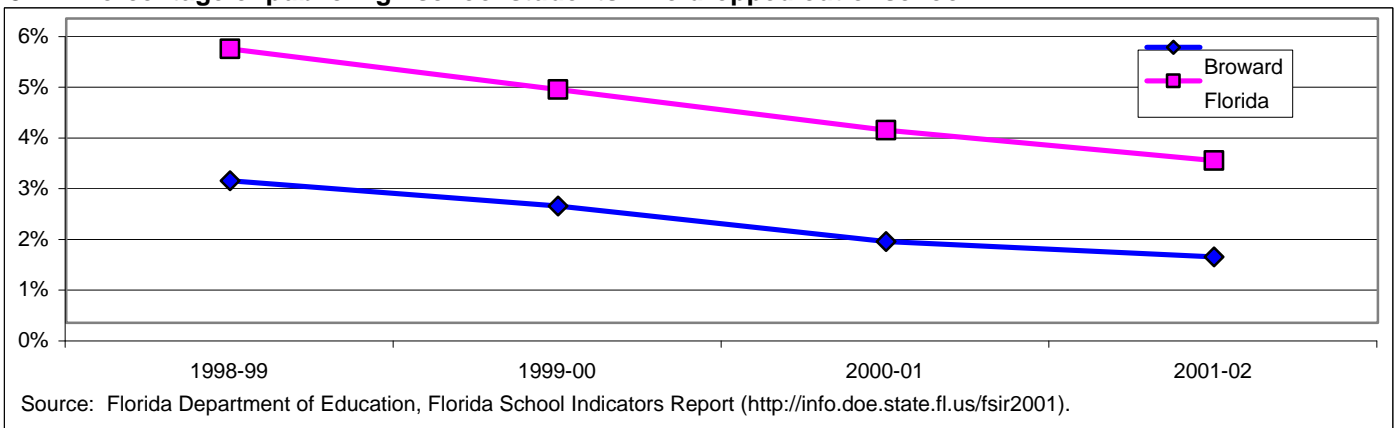
3.3.3(a) Percentage of public school students scoring at Level 3 or higher: FCAT Reading scores



3.3.3(b) Percentage of public school students scoring at Level 3 or higher: FCAT Mathematics scores

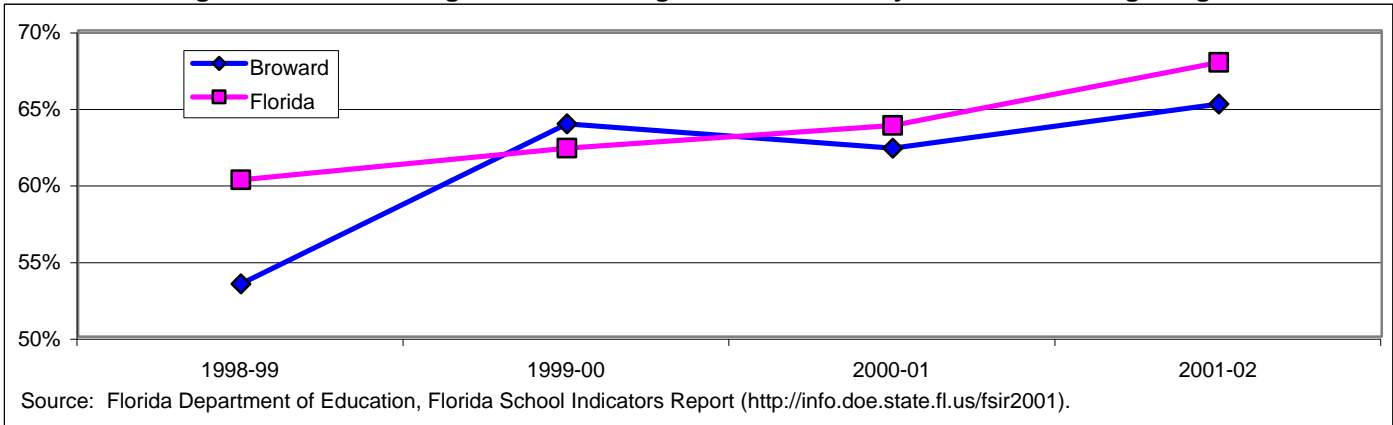


3.4.1 Percentage of public high school students who dropped out of school

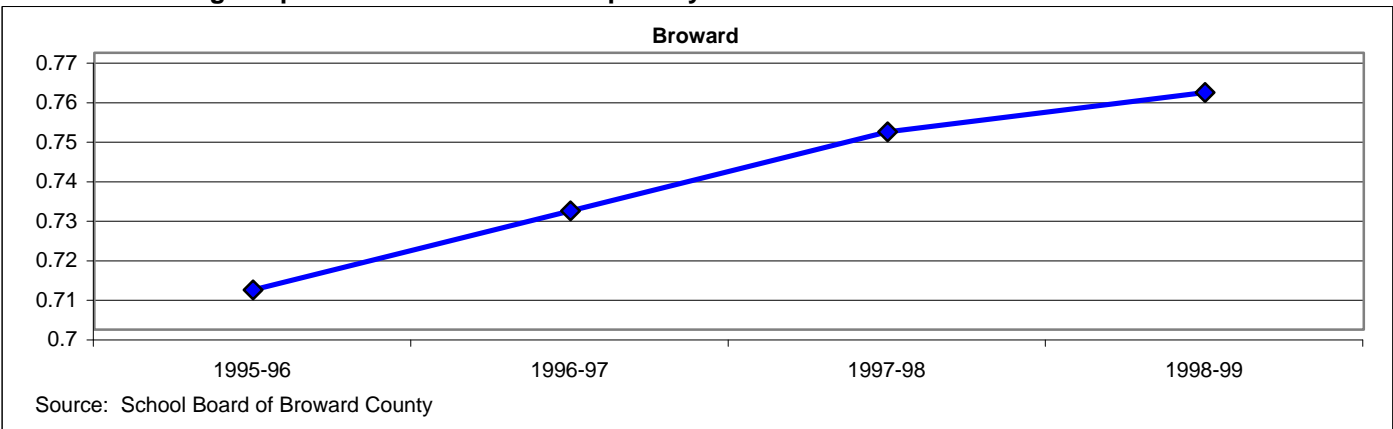


Our Learning

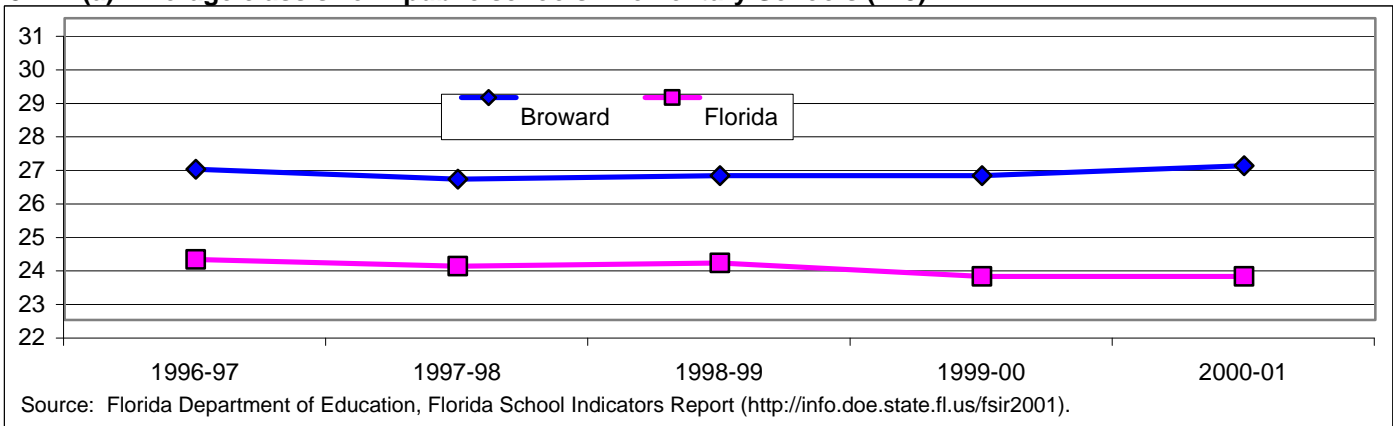
3.4.2 Percentage of students who graduate from high school within 4 years after entering 9th grade



3.16.2 Percentage of public education dollars spent by local school districts on the classroom



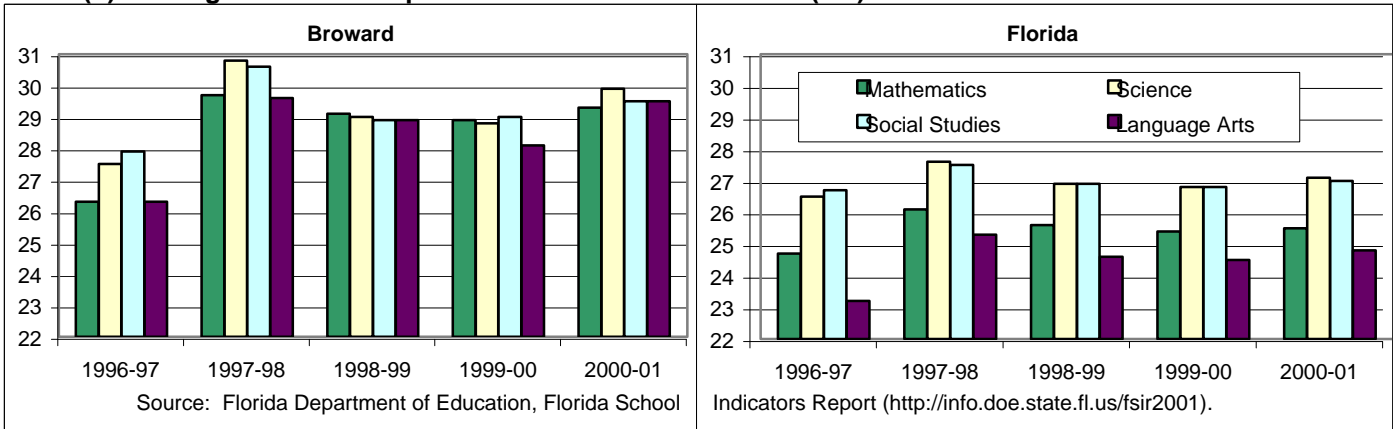
3.17.2(a) Average class size in public schools: Elementary Schools (K-5)



Average elementary school class sizes, as currently reported by the Florida Department of Education, are higher in Broward County than in the State of Florida as a whole.

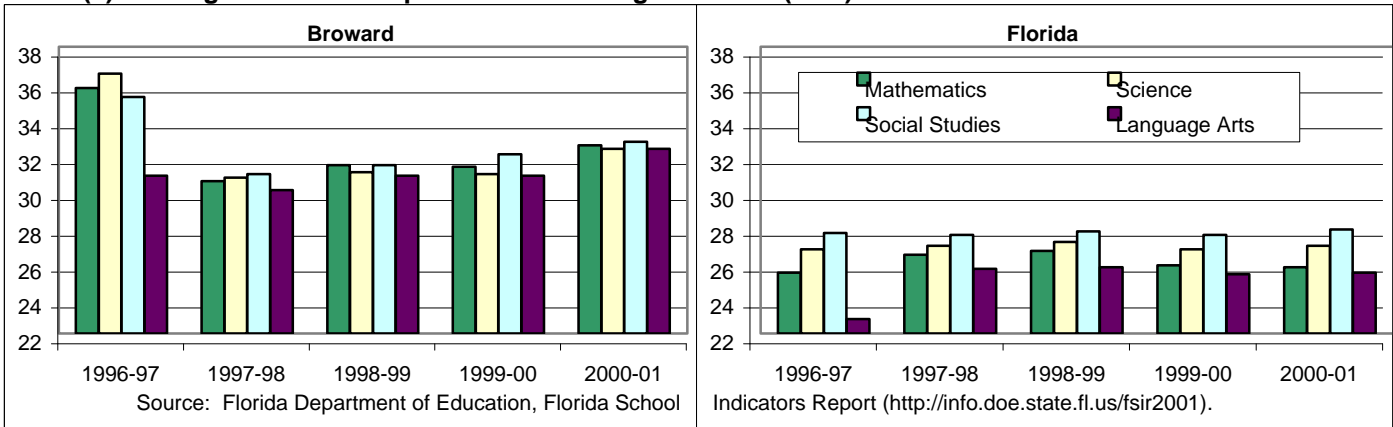
Our Learning

3.17.2(b) Average class size in public schools: Middle Schools (6-8)



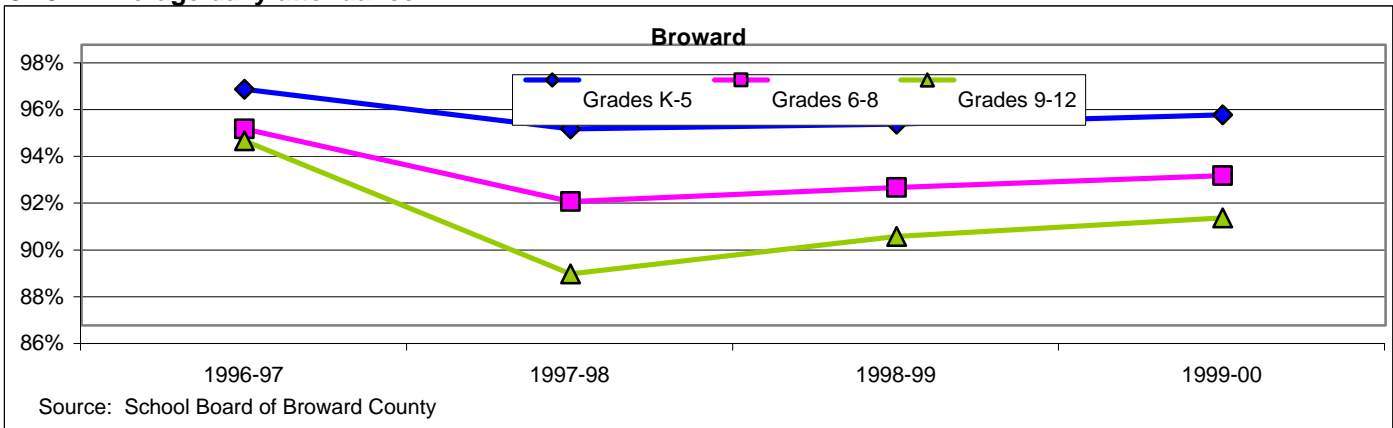
Average middle school class sizes, as currently reported by the Florida Department of Education, are higher in Broward County than in the State of Florida as a whole. The difference is largest for classes in language arts.

3.17.2(c) Average class size in public schools: High Schools (9-12)



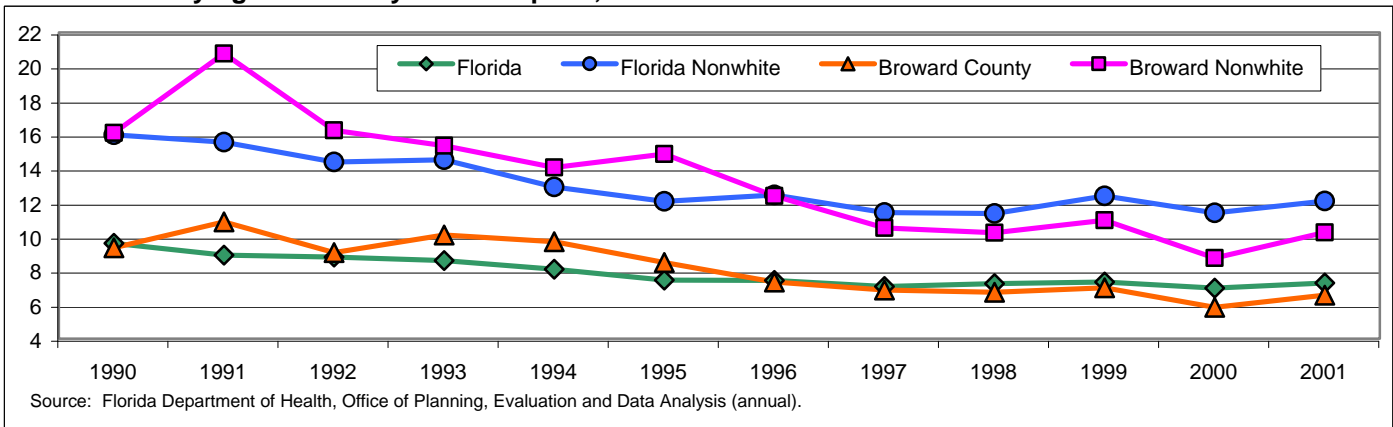
Average high school class sizes, as currently reported by the Florida Department of Education, are higher in Broward County than in the State of Florida as a whole. The difference is largest for classes in language arts.

3.19.2 Average daily attendance



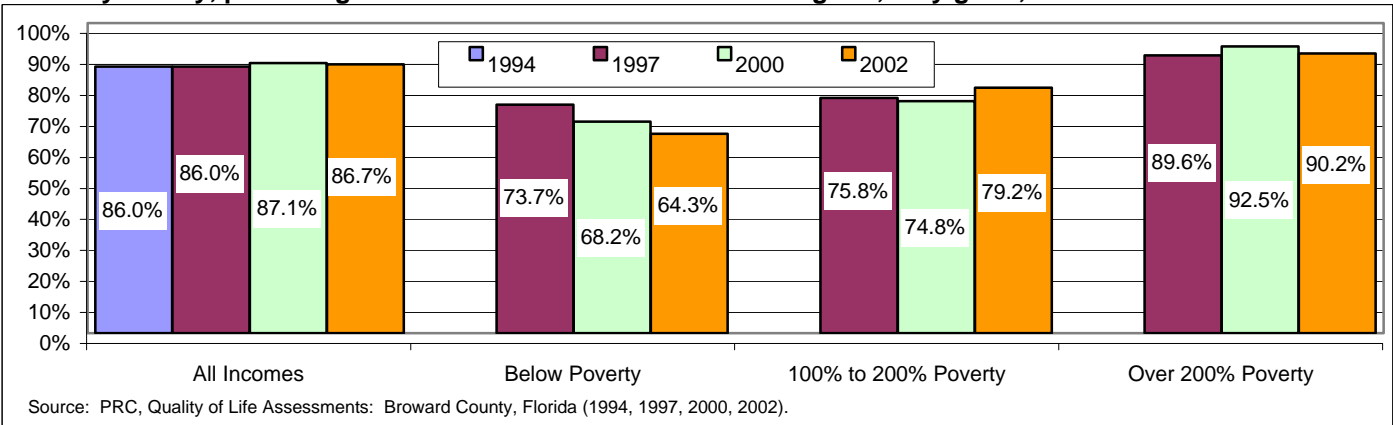
Our Health

4.3.1 Infants dying in the first year of life per 1,000 births



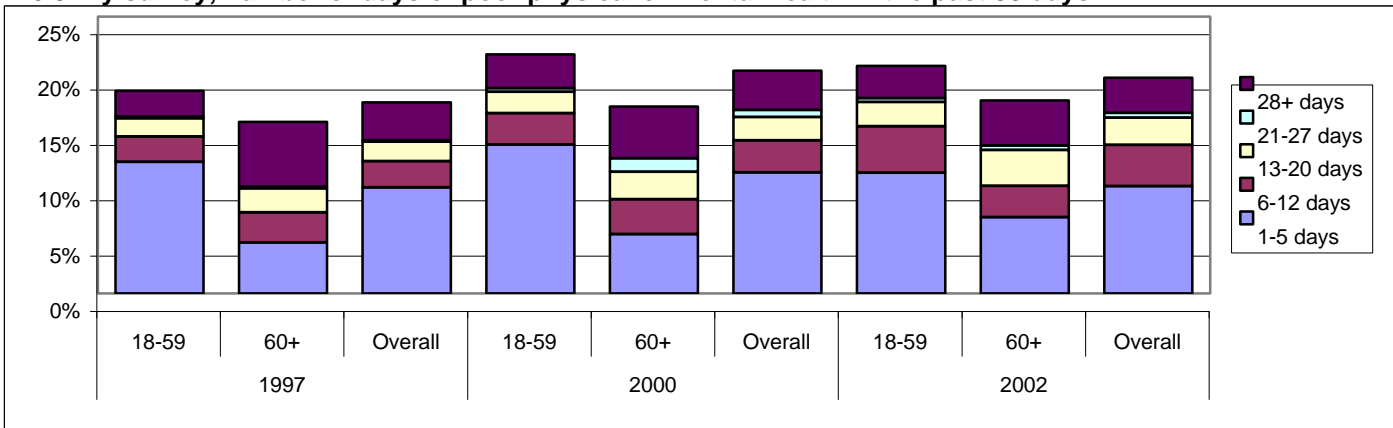
The infant mortality rate in Broward County declined from 10.9 in 1991 to 6.6 in 2001, and has been lower than the State of Florida average since the mid-1990s. However, the non-white rate in 2001 (10.2) remains much higher than the white rate (4.3).

4.6.1 By survey, percentage of adults who rated their health as good, very good, or excellent



Overall, the percentage of Broward County residents that rates their health as good, very good or excellent has remained constant for four surveys. Still, in 2002, more than one third of those whose incomes were below the poverty level rated their health as fair or poor.

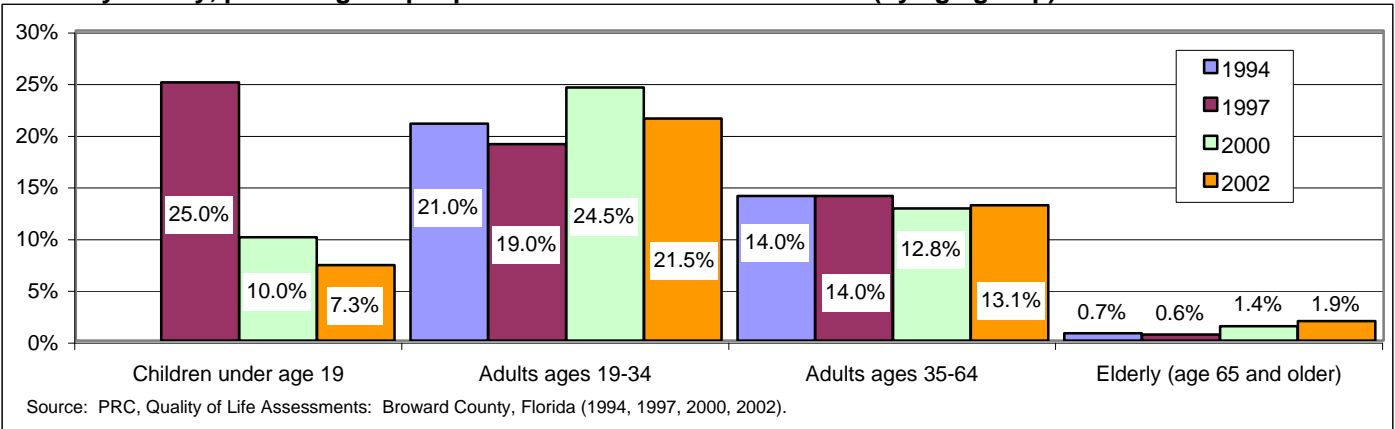
4.6.3 By survey, number of days of poor physical or mental health in the past 30 days



A higher proportion of younger adults in Broward County (20.6%) reported having at least one day of poor physical or mental health in the past 30 days than elderly residents (17.4%). But a larger proportion of elderly residents had a whole month of poor physical or mental health.

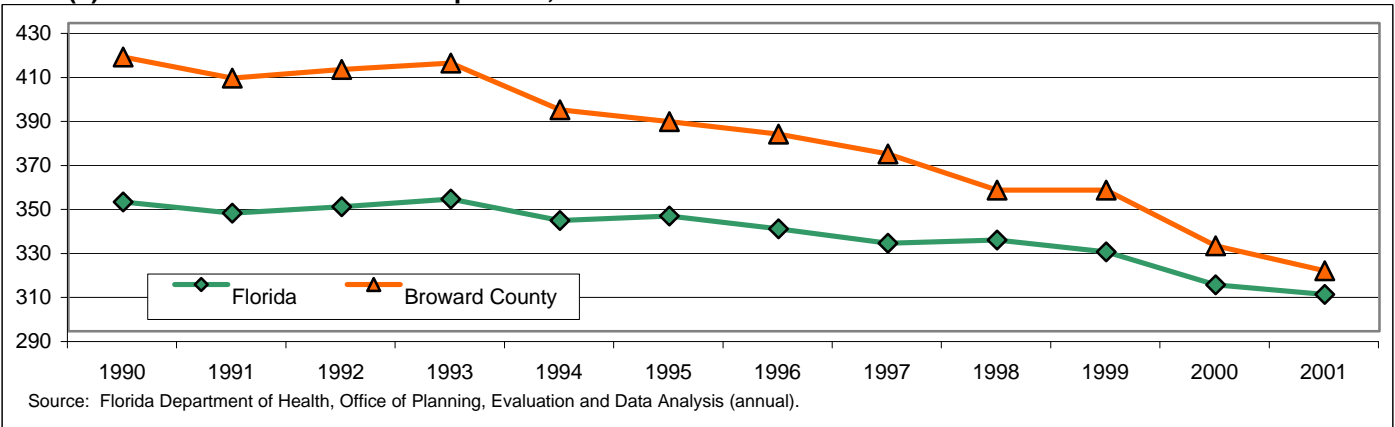
Our Health

4.7.1 By survey, percentage of people who had no health insurance (by age group)



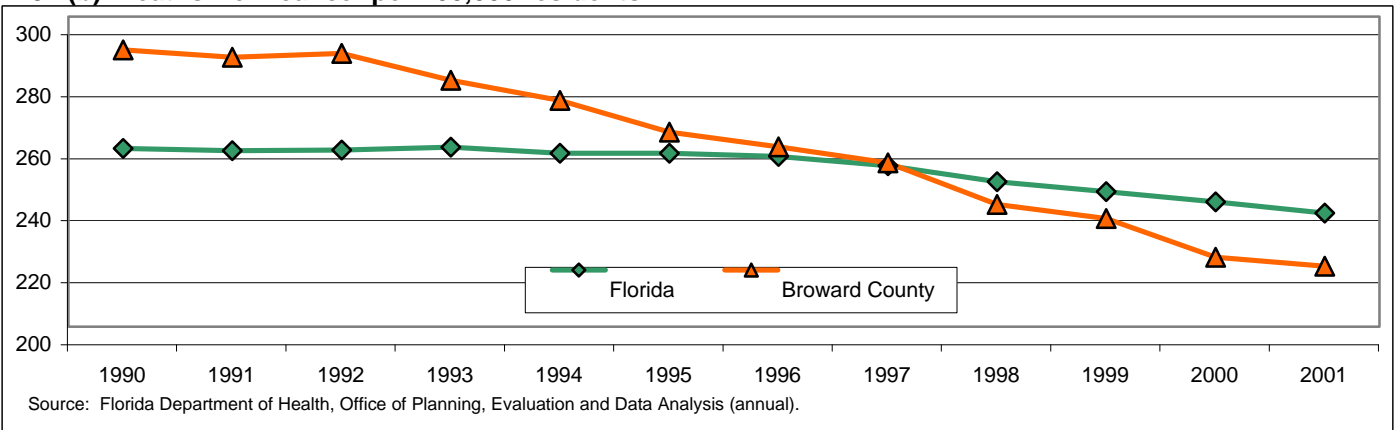
Program intervention has helped to lower dramatically the rate of uninsured children in Broward County. But adults age 19-34 continue to suffer high rates without insurance. The rise in elderly uninsured may reflect an increase in immigrants ineligible for Medicare.

4.9.2(a) Deaths from heart disease per 100,000 residents



The death rate from heart disease among Broward County residents has fallen by 22% over the last decade, from 405 to 317. Changing demographics (population growing younger) and the excellence of public and private healthcare have been important factors.

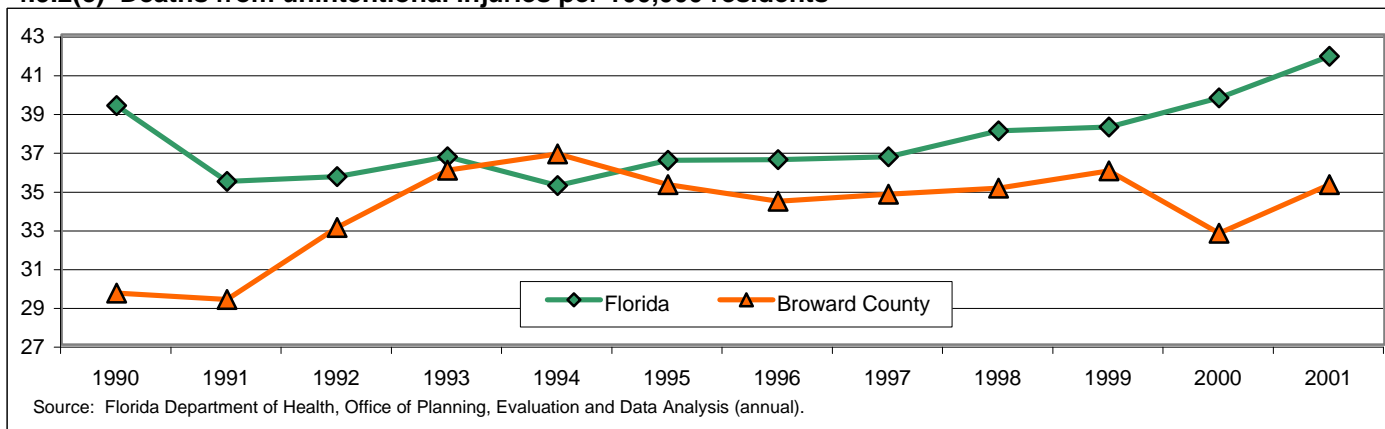
4.9.2(b) Deaths from cancer per 100,000 residents



The death rate from cancer among Broward County residents has fallen by more than 24% over the last decade, from 287 to 219. Changing demographics (population growing younger) and the excellence of public and private healthcare have been important factors.

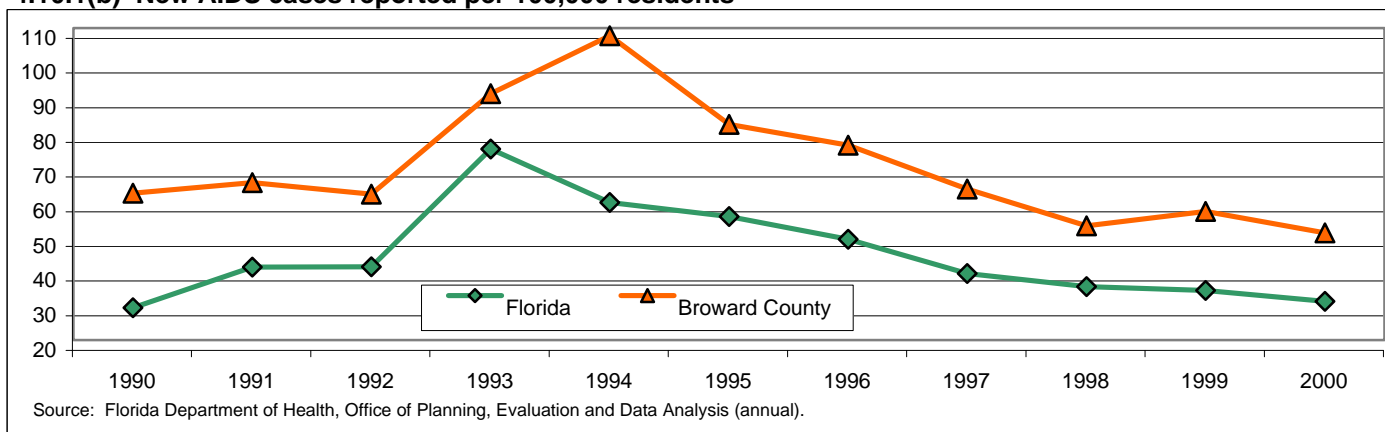
Our Health

4.9.2(c) Deaths from unintentional injuries per 100,000 residents



Unintentional injuries include automobile accidents, fires, drownings, poisonings, accidental firearms discharges and other similar injuries. The higher rate of deaths from such injuries in Broward County, and the fact that the rates are rising, are cause for concern.

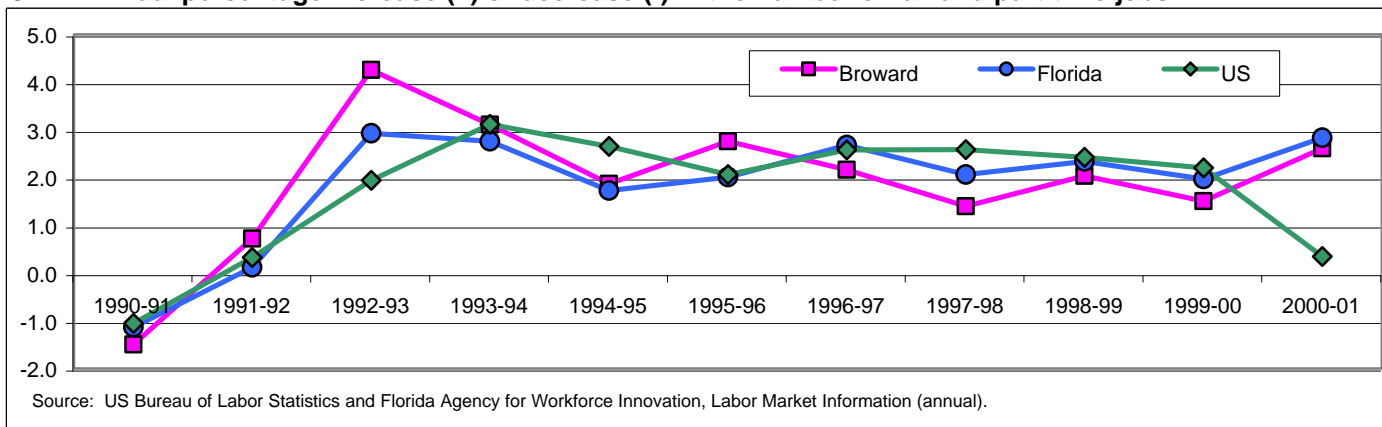
4.10.1(b) New AIDS cases reported per 100,000 residents



A very high level of resources committed to both prevention and treatment has contributed to a substantial decrease in the rate of new infections. The rate in 2001 (51) was less than half the rate of new infections at the height of the epidemic in 1994 (108).

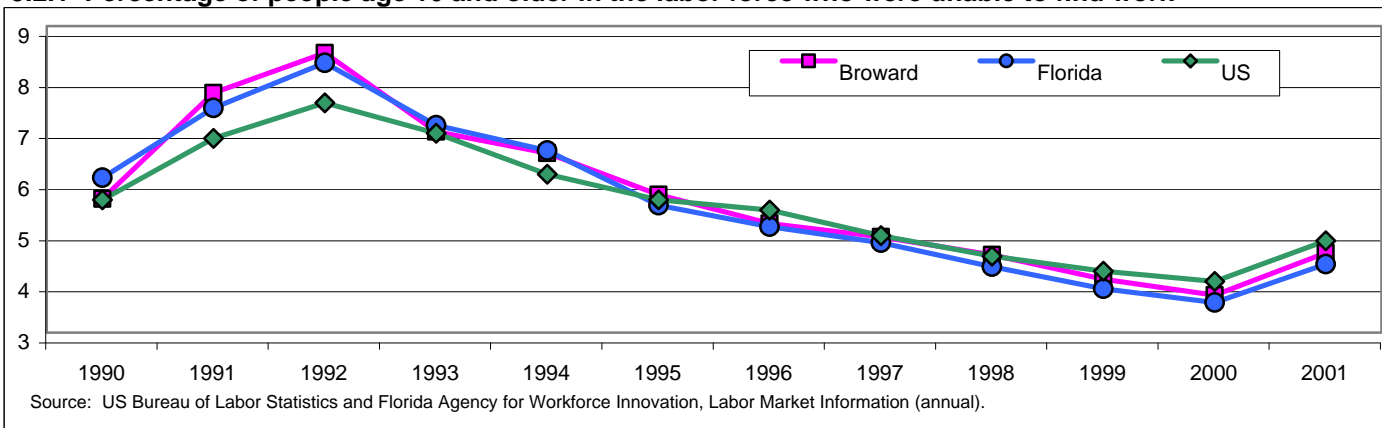
Our Economy

5.1.1 Annual percentage increase (+) or decrease (-) in the number of full and part-time jobs



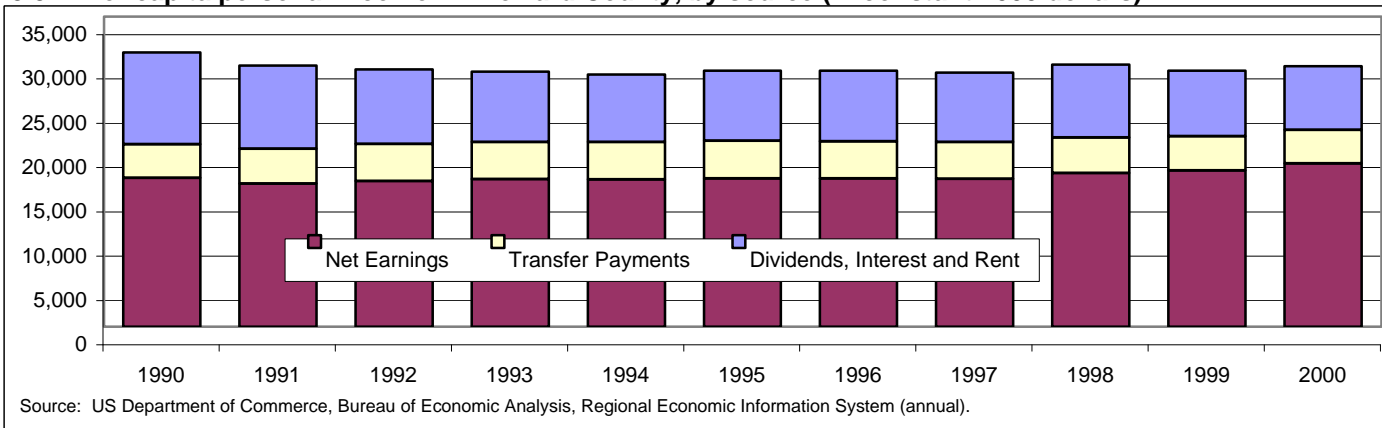
Job growth in Broward County has fluctuated around 2% per year since the mid-1990s, mirroring the performance of the State of Florida and the nation. As the national rate of growth in the US fell in 2001, the County's job growth held firm at 2.6%.

5.2.1 Percentage of people age 16 and older in the labor force who were unable to find work



In the 1990s, Broward County's unemployment rate accompanied the national and state rates to the lowest rates ever achieved. As the economic downturn began in 2000, rates have risen again. Broward County's rate in 2001 (4.6%) was slightly higher than the State rate (4.3%).

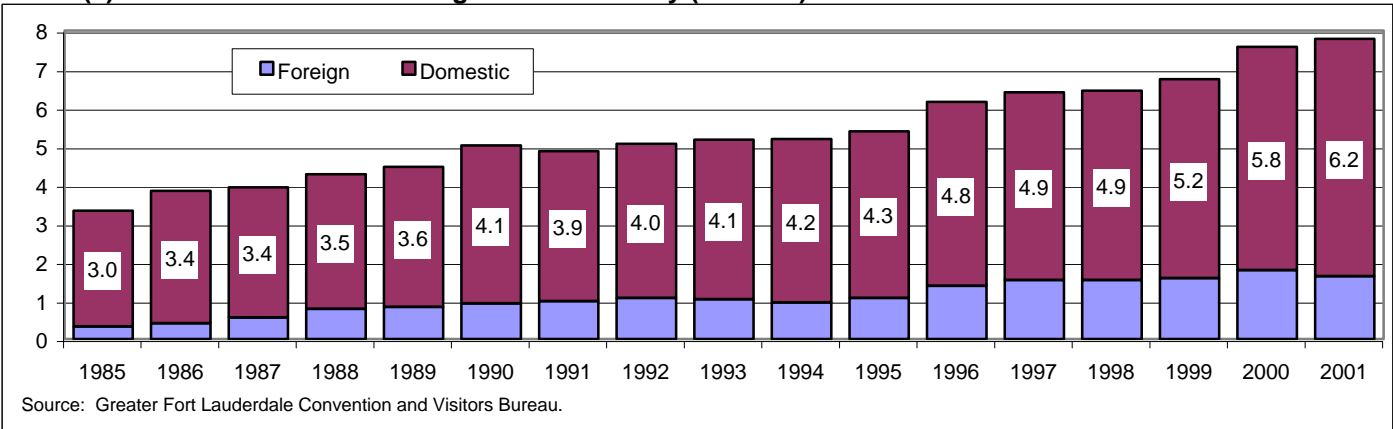
5.5.1 Per capita personal income in Broward County, by source (in constant 2000 dollars)



Per capita personal incomes in constant dollars fell during the 1990s, and had not yet reached the 1990 levels 10 years later. Over the decade, the proportion of dividends, interest and rent fell while the income from salaries and wages rose.

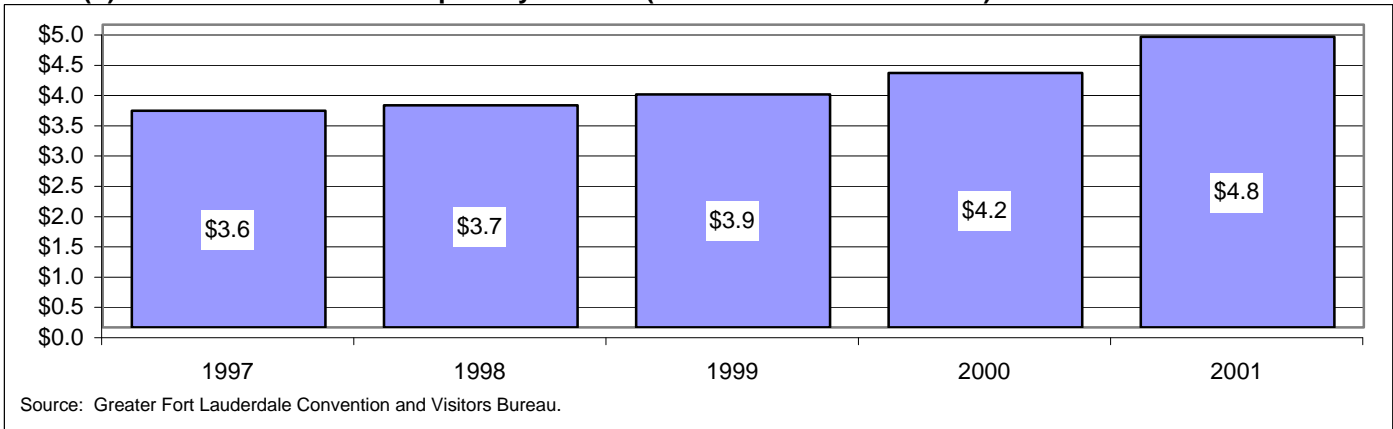
Our Economy

5.11.1(a) Number of tourists visiting Broward County (millions)



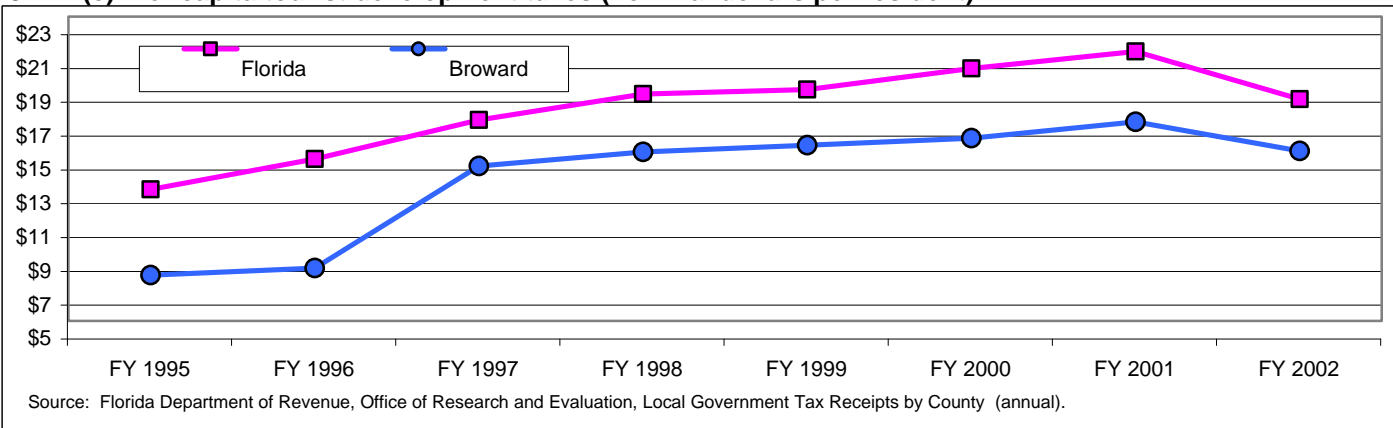
Broward County remains a premier travel destination for both international and domestic visitors, increasing by 60% over the last decade to almost 8 million total. This reflects Broward County's efforts to promote within-county collaboration in tourism promotion.

5.11.1(b) Estimated total dollars spent by tourists (billions of nominal dollars)



According to these estimates of the total dollars spent by tourists in Broward County, there has been an increase of 33% in the past 5 years, to almost \$5 billion. The data for 2002, when available, may reflect the downturn observed as a result of the September 2001 attacks.

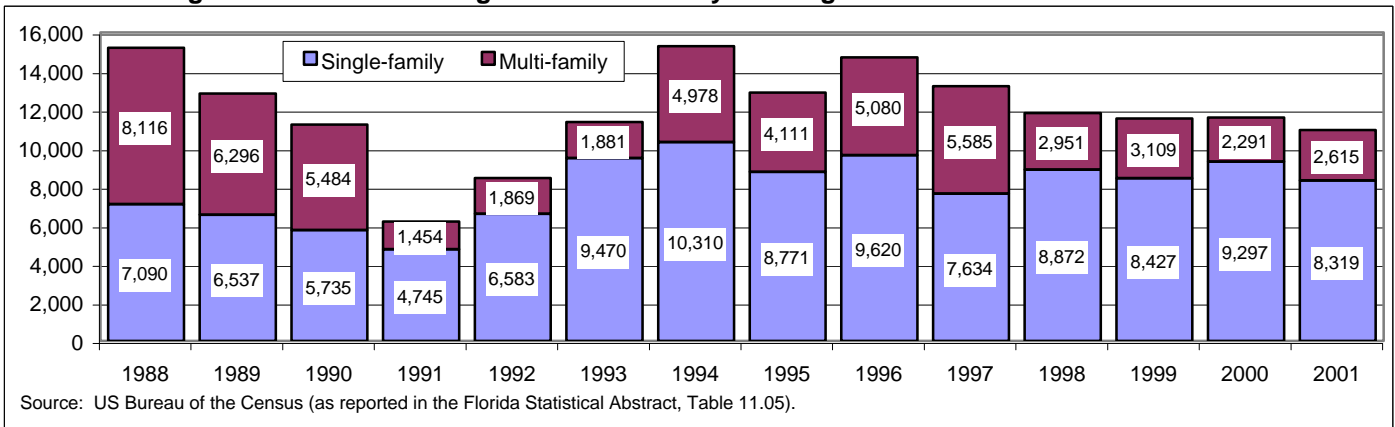
5.11.1(c) Per capita tourist development taxes (nominal dollars per resident)



The value of tourist development taxes collected by Broward County per resident has risen consistently in recent years, until the most recent fiscal year, which reflects the impact of September 11, 2001. Broward's average taxes per resident are slightly lower than the state average.

Our Economy

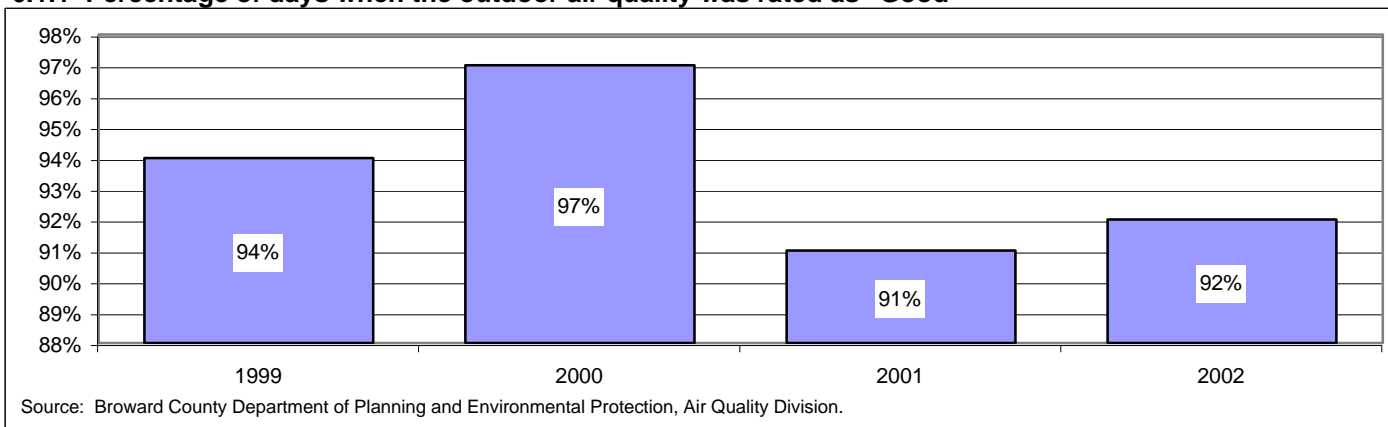
5.16.1 Housing starts: number of single and multi-family housing units that started construction



Housing starts in Broward County have remained strong over the last decade, since the County and the State recovered from the recession of the early 1990s. Broward County's share of State housing starts has declined from a high of 12.3% in 1994 to 6.7% in 2001.

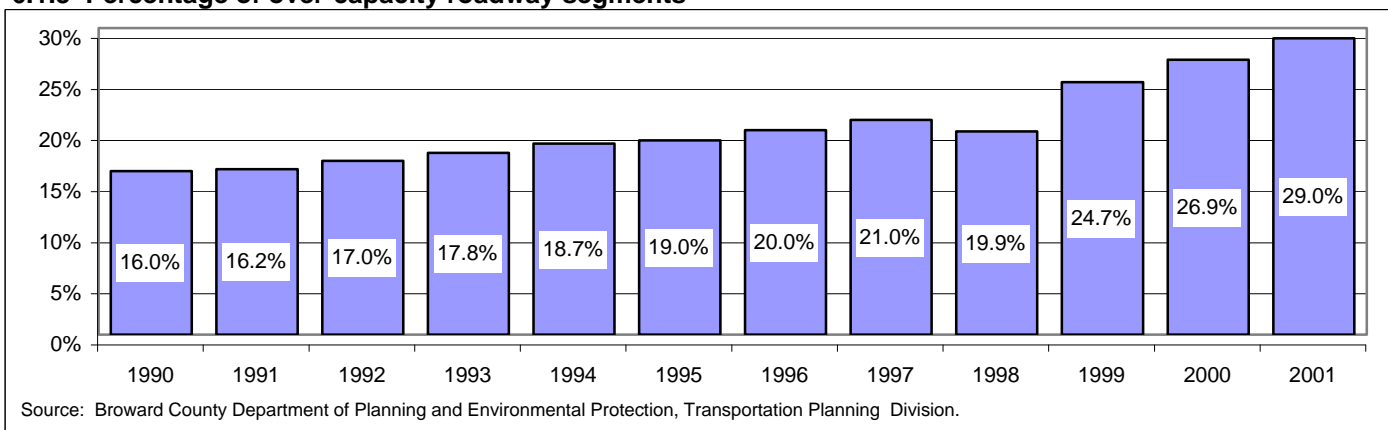
Our Environment

6.1.1 Percentage of days when the outdoor air quality was rated as "Good"



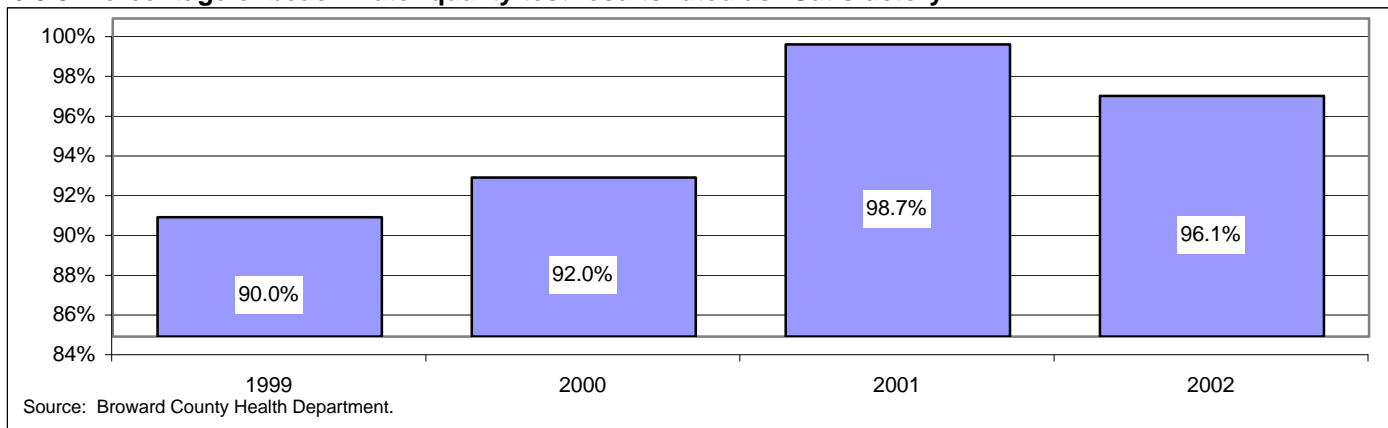
Outdoor air quality on any given day may be affected by both the volume of pollutants released into the air and by the weather. The EPA's national Air Quality Index considers ozone, particulate matter, nitrogen dioxide, sulfur dioxide, carbon monoxide and lead.

6.1.3 Percentage of over-capacity roadway segments



The volume of vehicle traffic and the level of congestion on our roadways are major contributors to the quality of outdoor air. The significant increase in over-capacity road segments translates into more congestion and more pollution.

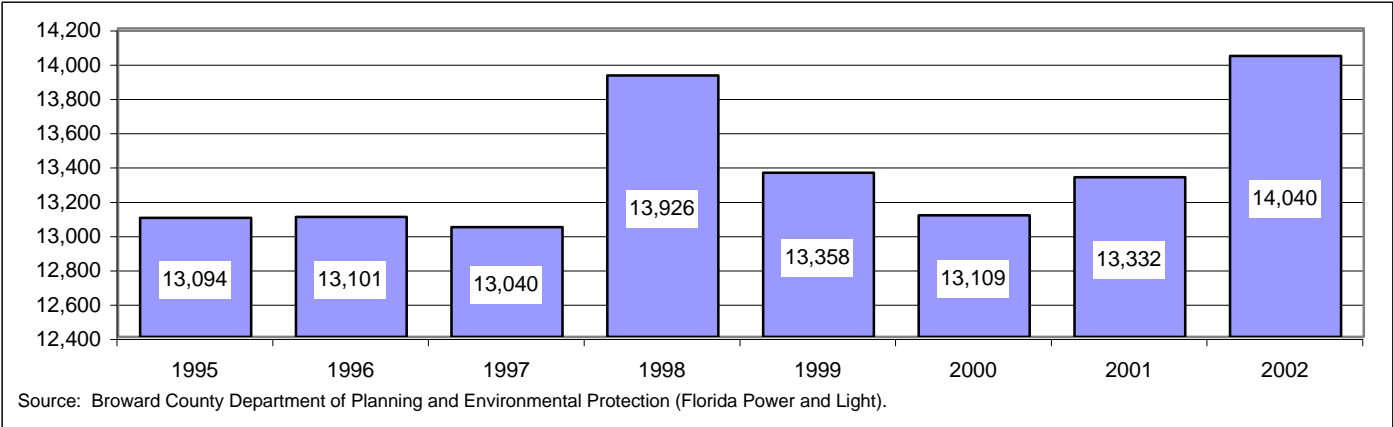
6.3.3 Percentage of beach water quality test results rated as "Satisfactory"



Weekly enterococci and fecal coliform testing at 15 public beach and recreational waterway locations in Broward County shows a reduction in the percentage of unsatisfactory results over the last four years, reducing the exposure of swimmers to water-borne diseases.

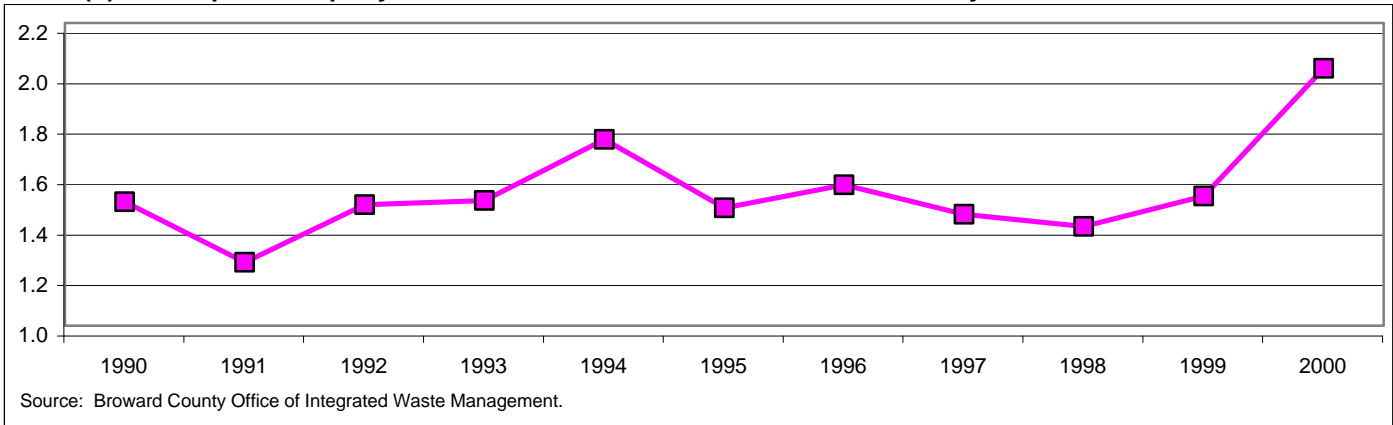
Our Environment

6.9.1(b) Per capita annual electric energy consumption (kilowatt-hours)



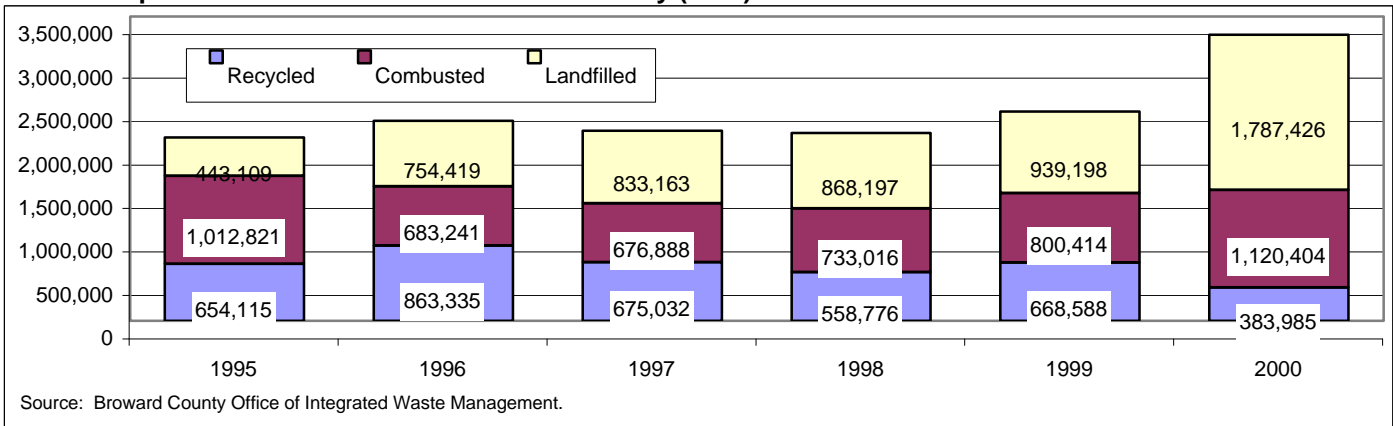
The per capita consumption of electrical energy in Broward County has increased in recent years. As a tourist destination, overall per capita consumption tends to be higher than in areas where fewer outside visitors contribute to consumption.

6.10.1(b) Per capita tons per year of solid waste collected in Broward County



Increasing solid waste generation in Broward County increases demands on disposal options. Rising per capita rates of solid waste are compounded by the growing population.

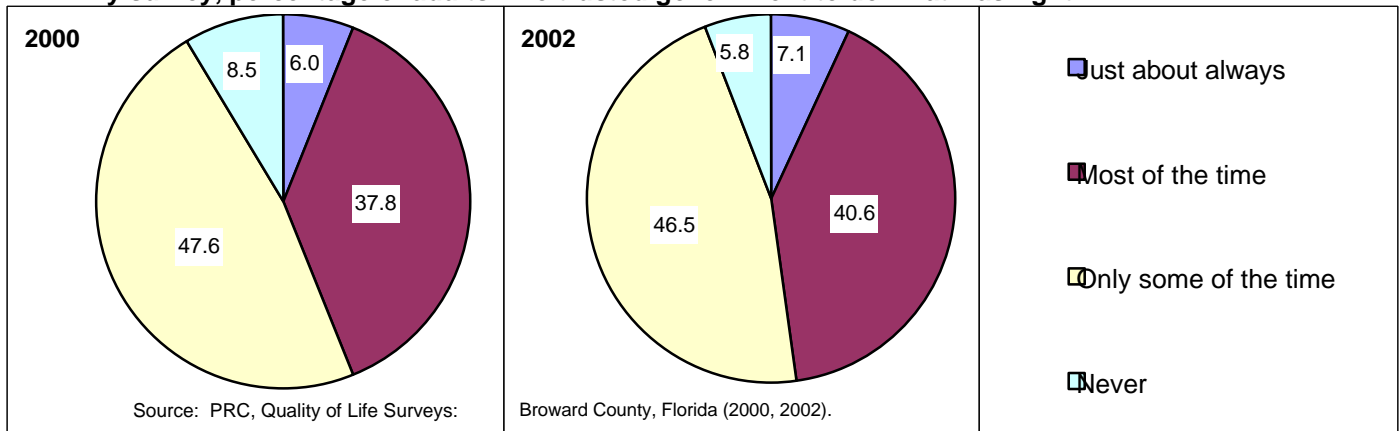
6.10.2 Disposition of solid waste in Broward County (tons)



Declining prices and demand for recycled raw materials has kept Broward County and the State of Florida from reaching the goal of recycling 30% of the solid waste stream, leading to increased volumes landfilled and burned in the County's two incinerators.

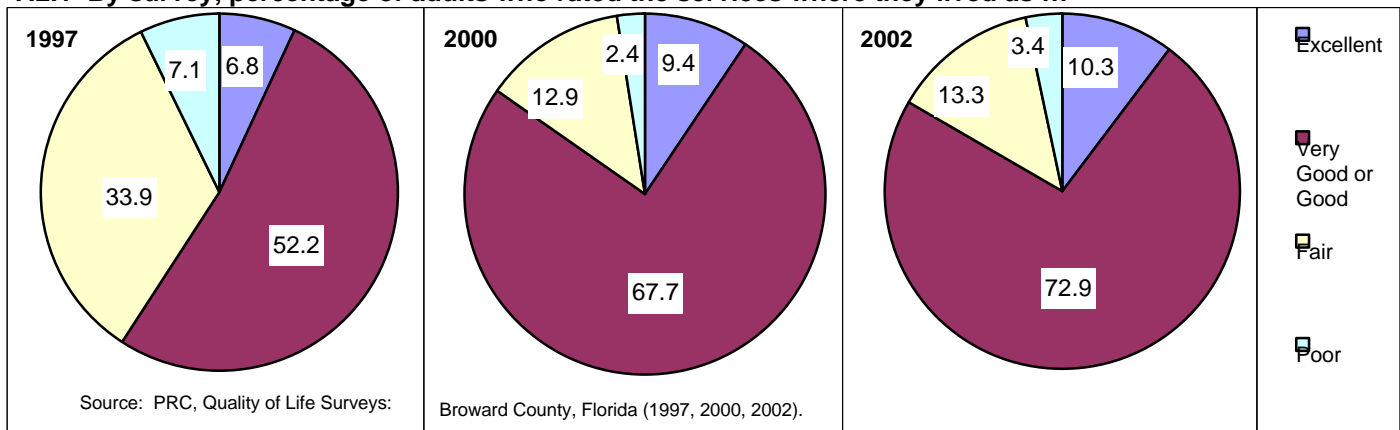
Our Government

7.1.1 By survey, percentage of adults who trusted government to do what was right



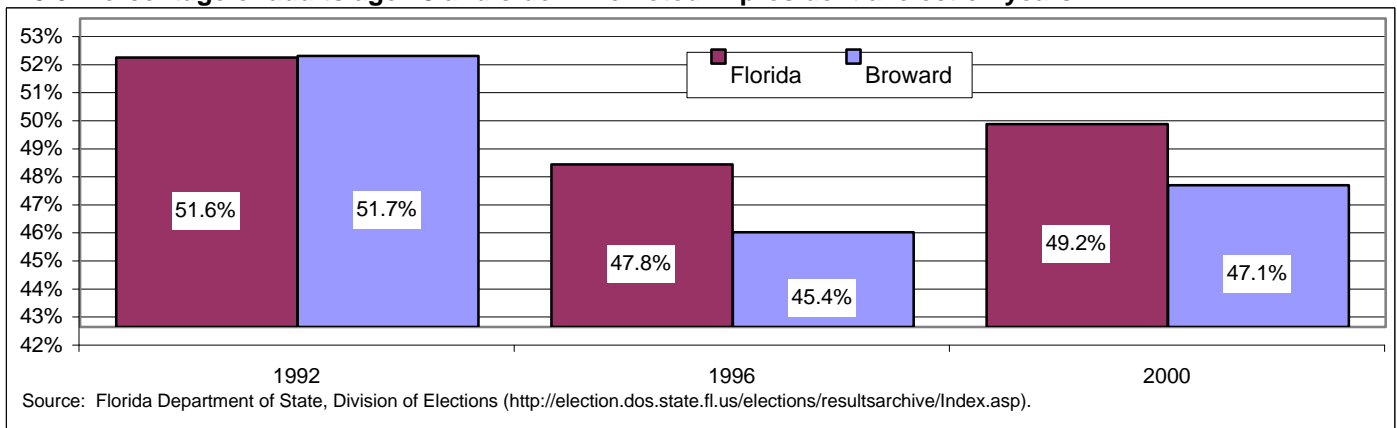
More than half of Broward County residents surveyed only trusted government to do what was right some of the time or not at all. This relatively high rate of distrust is not uncommon in surveys of this type, but it shows clearly the need for improvement.

7.2.1 By survey, percentage of adults who rated the services where they lived as ...



In 1997, 41% of the Broward County residents surveyed rated the services where they live as fair or poor. By 2002, only 16.7% gave the same rating of fair or poor, and one out of ten residents rated the services as excellent.

7.9.3 Percentage of adults age 18 and older who voted in presidential election years



Less than half of the voting age population in Broward County voted in the 2000 presidential election. This indicator of civic engagement is declining around the State of Florida, and participation in non-presidential elections is even lower.