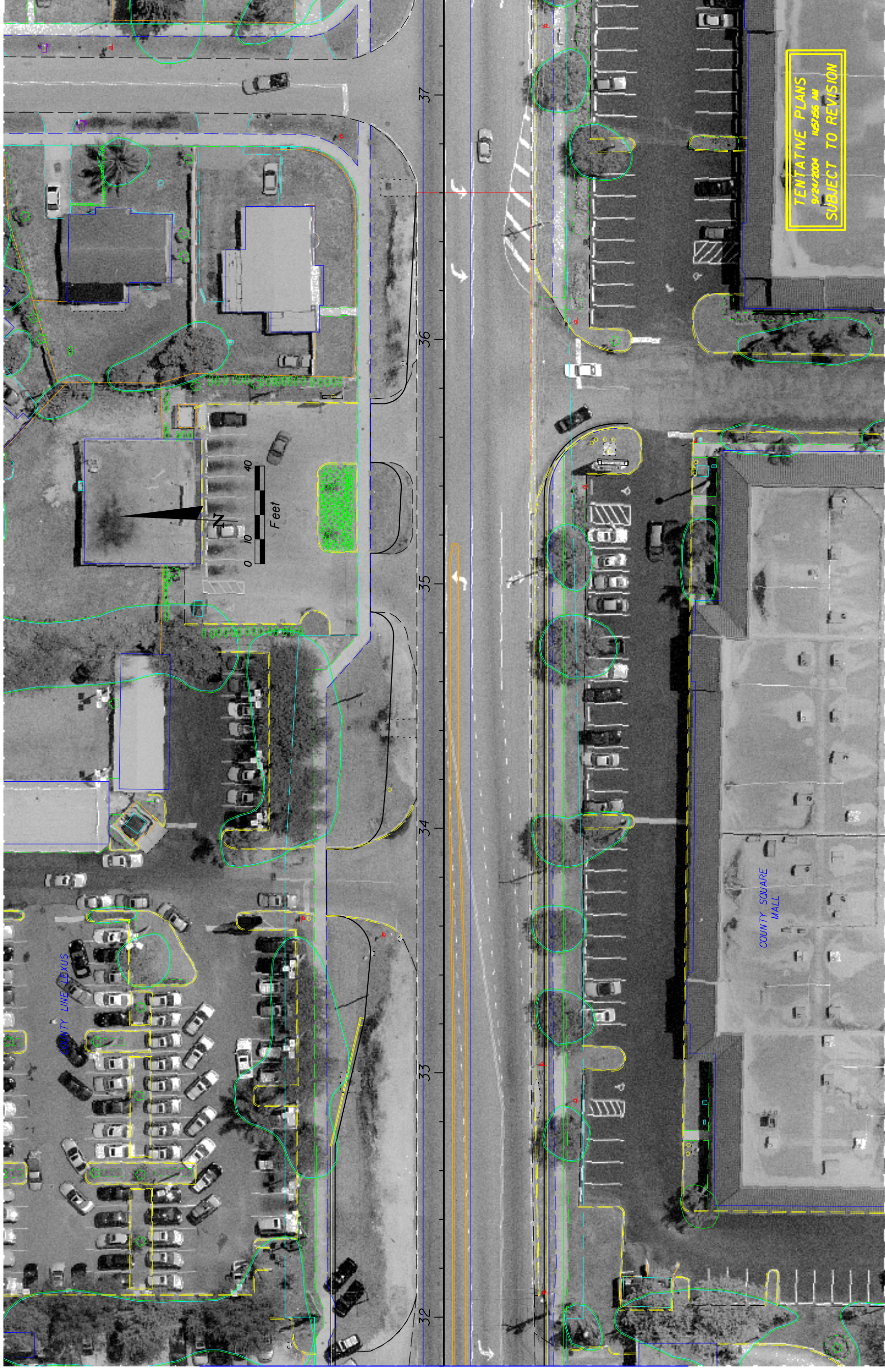


MATCH LINE STA. 31+80.00



REVISIONS		DESCRIPTION	DATE	BY

ENGINEER OF RECORD:
 JAMES EUGENE FORD, P.E. • 47526
 3400 W. COMMERCIAL BLVD.
 FORT LAUDERDALE, FL 33309

STATE OF FLORIDA	
DEPARTMENT OF TRANSPORTATION	
ROAD NO.	COUNTY
7	BROWARD
FINANCIAL PROJECT ID	
22773-1-52-01	

ROADWAY PLAN - SR 852
 COUNTY LINE ROAD

SHEET NO. 45