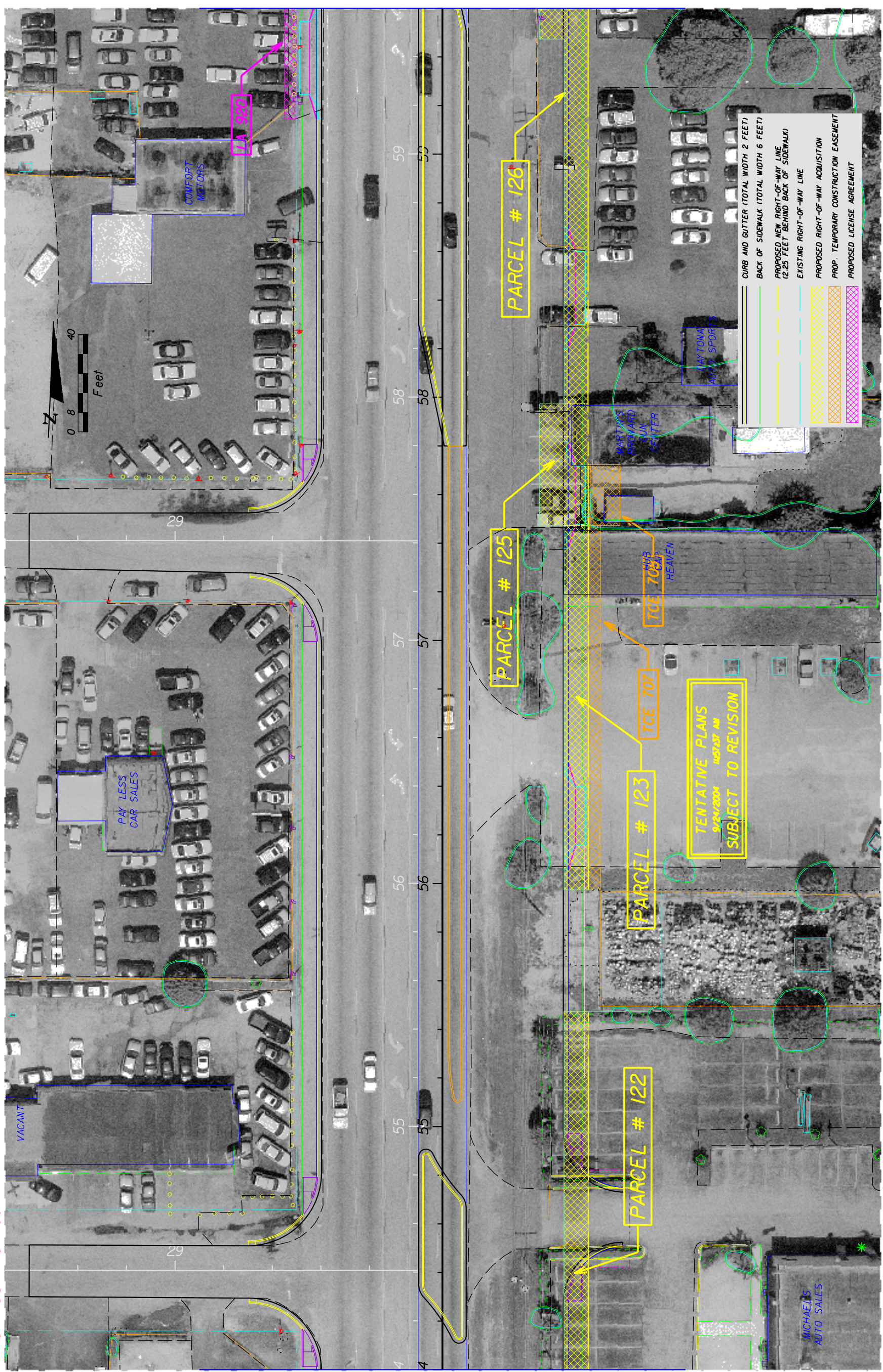


SW 35th Street

SW 34th Street

MATCH LINE STA. 54+00.00

MATCH LINE STA. 59+60.00



REVISIONS		DESCRIPTION	DATE	BY

ENGINEER OF RECORD:  
 JAMES EUGENE FORD, P.E. \* 47526  
 3400 W. COMMERCIAL BLVD.  
 FORT LAUDERDALE, FL 33309

STATE OF FLORIDA		
DEPARTMENT OF TRANSPORTATION		
ROAD NO.	COUNTY	FINANCIAL PROJECT ID
7	BROWARD	22773-1-52-01

ROADWAY PLAN - SR 7

SHEET NO. 38