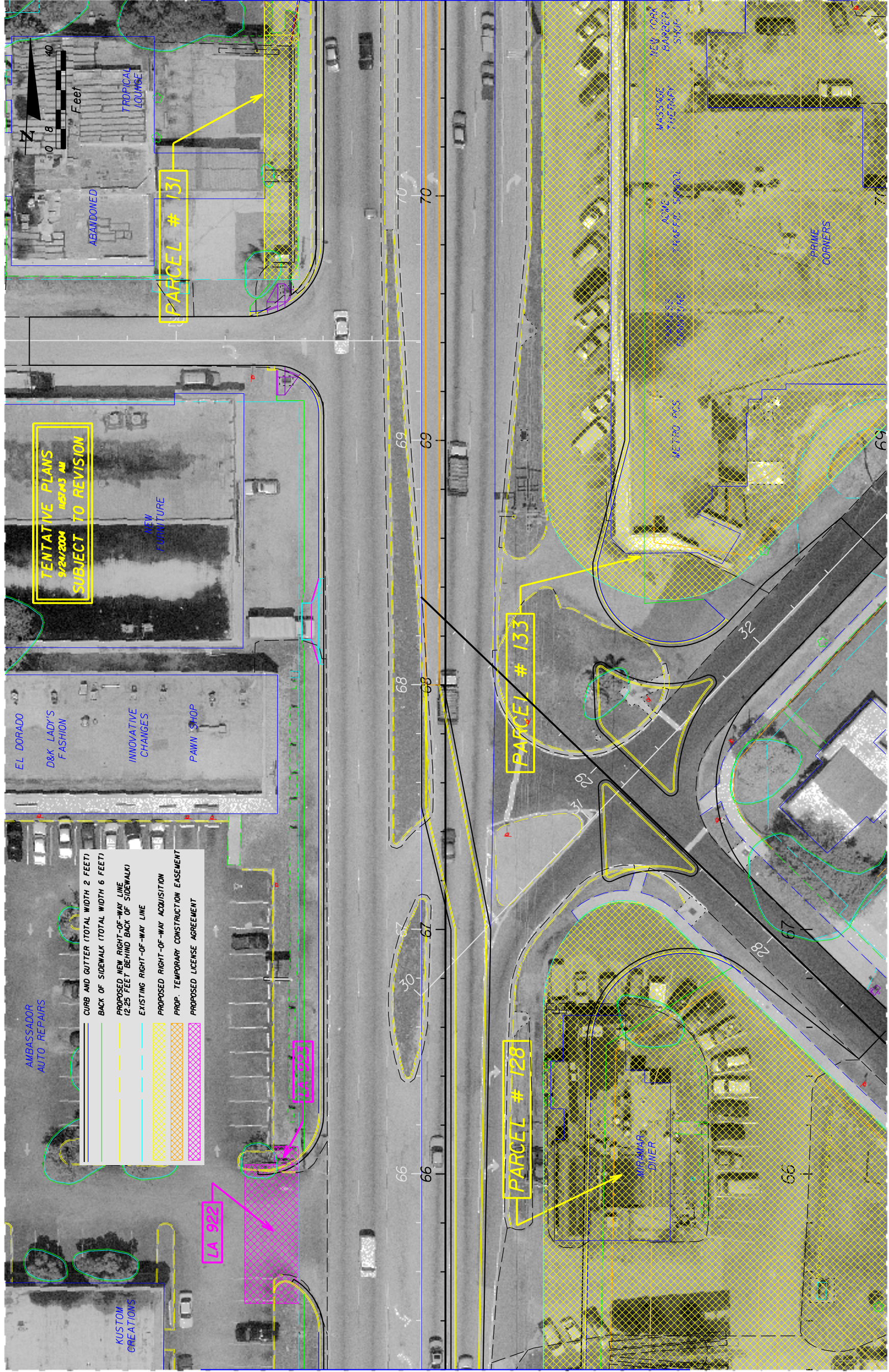


SW 30th Street



MATCH LINE STA. 65+20.00

MATCH LINE STA. 70+80.00

RONALD Road

BARRY Road

REVISIONS		DESCRIPTION	DATE	BY

ENGINEER OF RECORD:
 JAMES EUGENE FORD, P.E. • 47526
 3400 W. COMMERCIAL BLVD.
 FORT LAUDERDALE, FL 33309

STATE OF FLORIDA DEPARTMENT OF TRANSPORTATION		
ROAD NO.	COUNTY	FINANCIAL PROJECT ID
7	BROWARD	227773-1-52-01

ROADWAY PLAN - SR 7

SHEET NO. 40