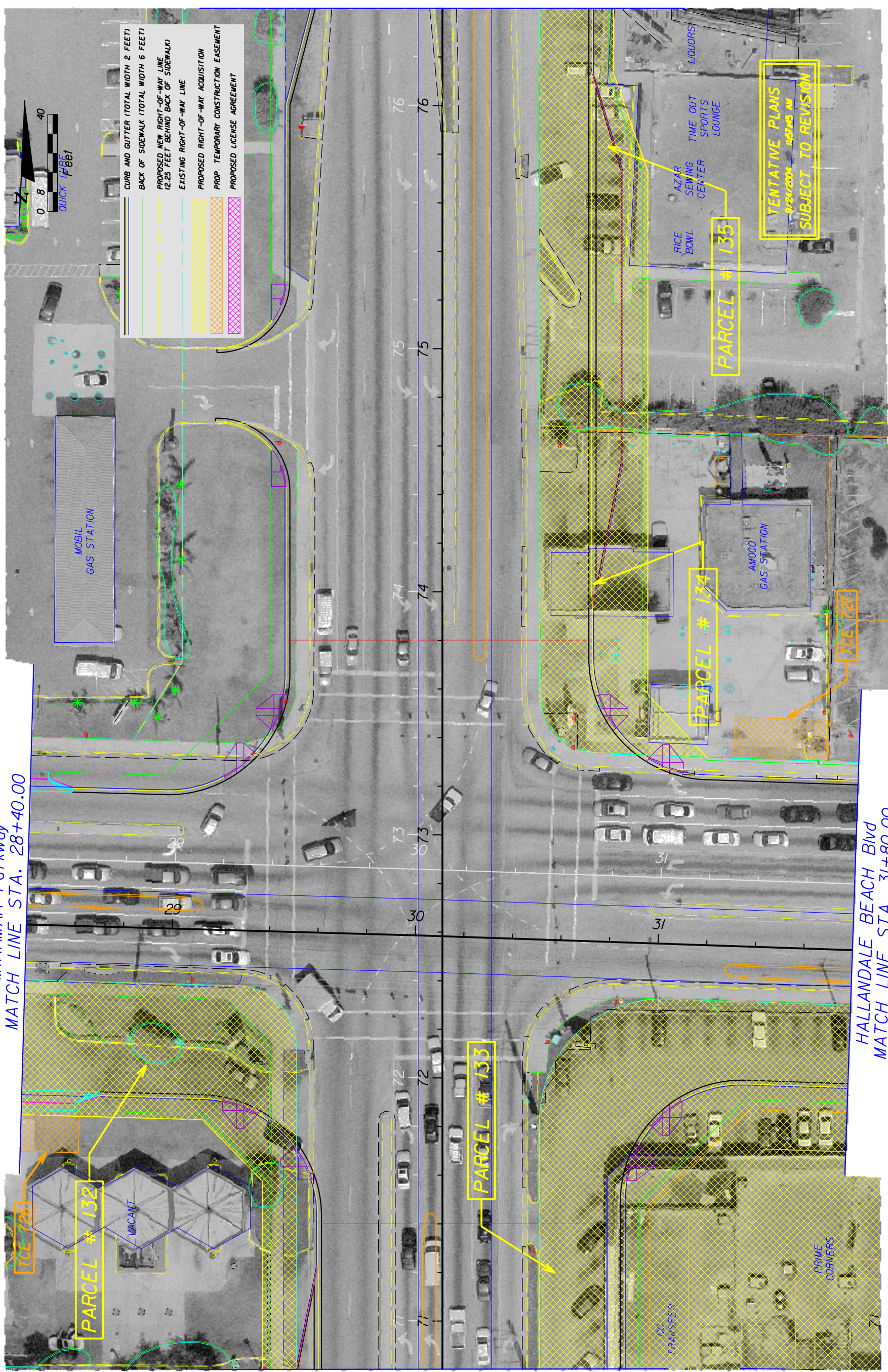


MIRAMAR Parkway  
MATCH LINE STA. 28+40.00

MATCH LINE STA. 70+80.00

MATCH LINE STA. 76+40.00

HALLANDALE BEACH Blvd  
MATCH LINE STA. 31+80.00



TENTATIVE PLANS  
9/24/2004 11:27:45 AM  
SUBJECT TO REVISION

REVISIONS	
DATE	DESCRIPTION

ENGINEER OF RECORD:  
JAMES EUGENE FORD, P.E. \* 47526  
3400 W. COMMERCIAL BLVD.  
FORT LAUDERDALE, FL 33309

STATE OF FLORIDA	
DEPARTMENT OF TRANSPORTATION	
ROAD NO.	COUNTY
7	BROWARD
FINANCIAL PROJECT ID	
227773-1-52-01	

SHEET NO.  
41

ROADWAY PLAN - SR 7

USER: r44526t  
9/24/2004 11:57:45 AM  
c:\v\jinspro\17731\_s7\roadway\planrd41.dgn