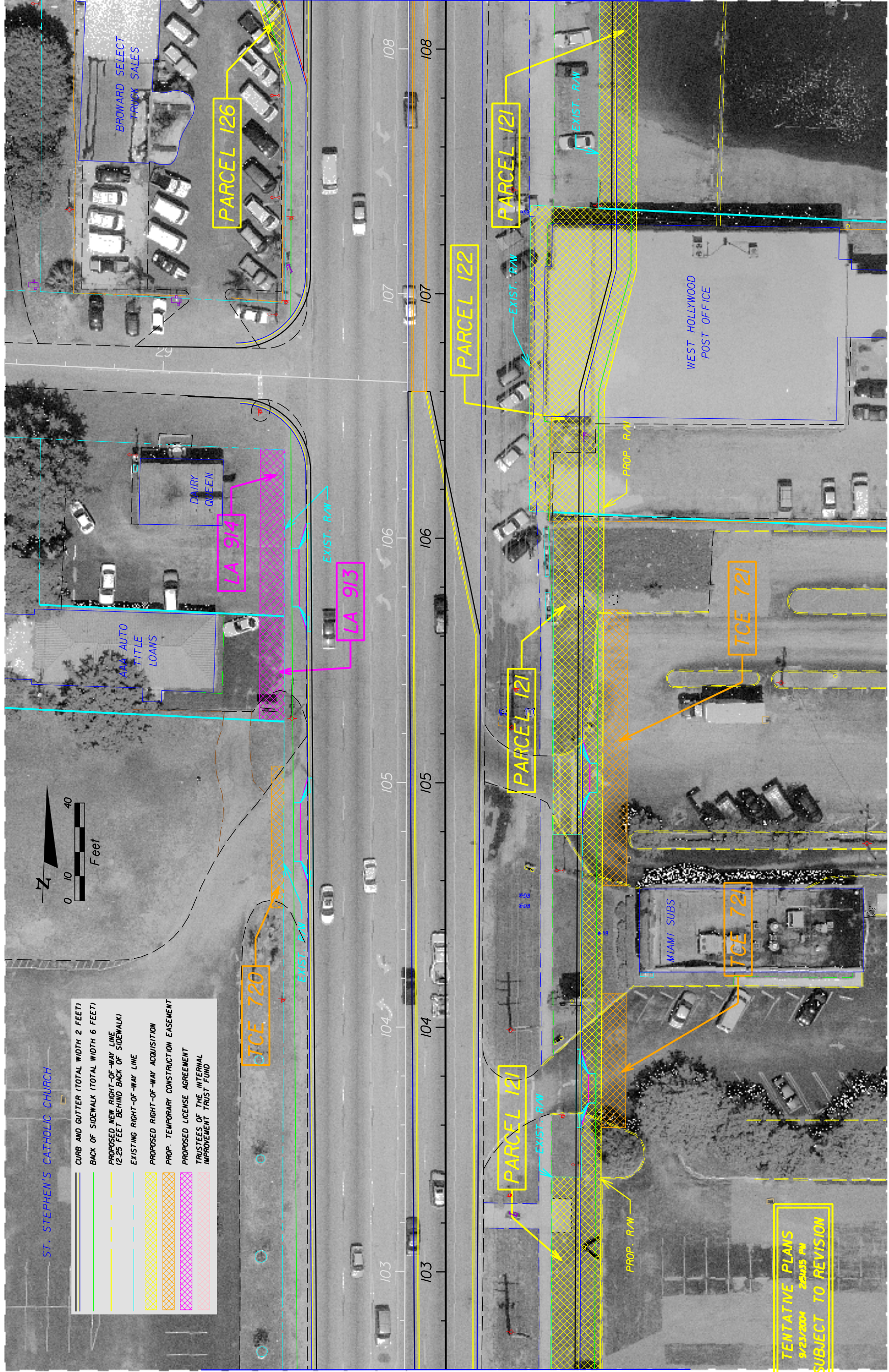


SW 19th Street



MATCH LINE STA. 102+60.00

MATCH LINE STA. 108+20.00

| REVISIONS | |
|-----------|-------------|
| DATE | DESCRIPTION |
| | |
| | |

ENGINEER OF RECORD:
 JAMES EUGENE FORD, P.E. * 47526
 3400 W. COMMERCIAL BLVD.
 FORT LAUDERDALE, FL 33309

| | |
|------------------------------|---------|
| STATE OF FLORIDA | |
| DEPARTMENT OF TRANSPORTATION | |
| ROAD NO. | COUNTY |
| 7 | BROWARD |
| FINANCIAL PROJECT ID | |
| 227774-1-52-01 | |

ROADWAY PLAN - SR-7

SHEET NO. 35