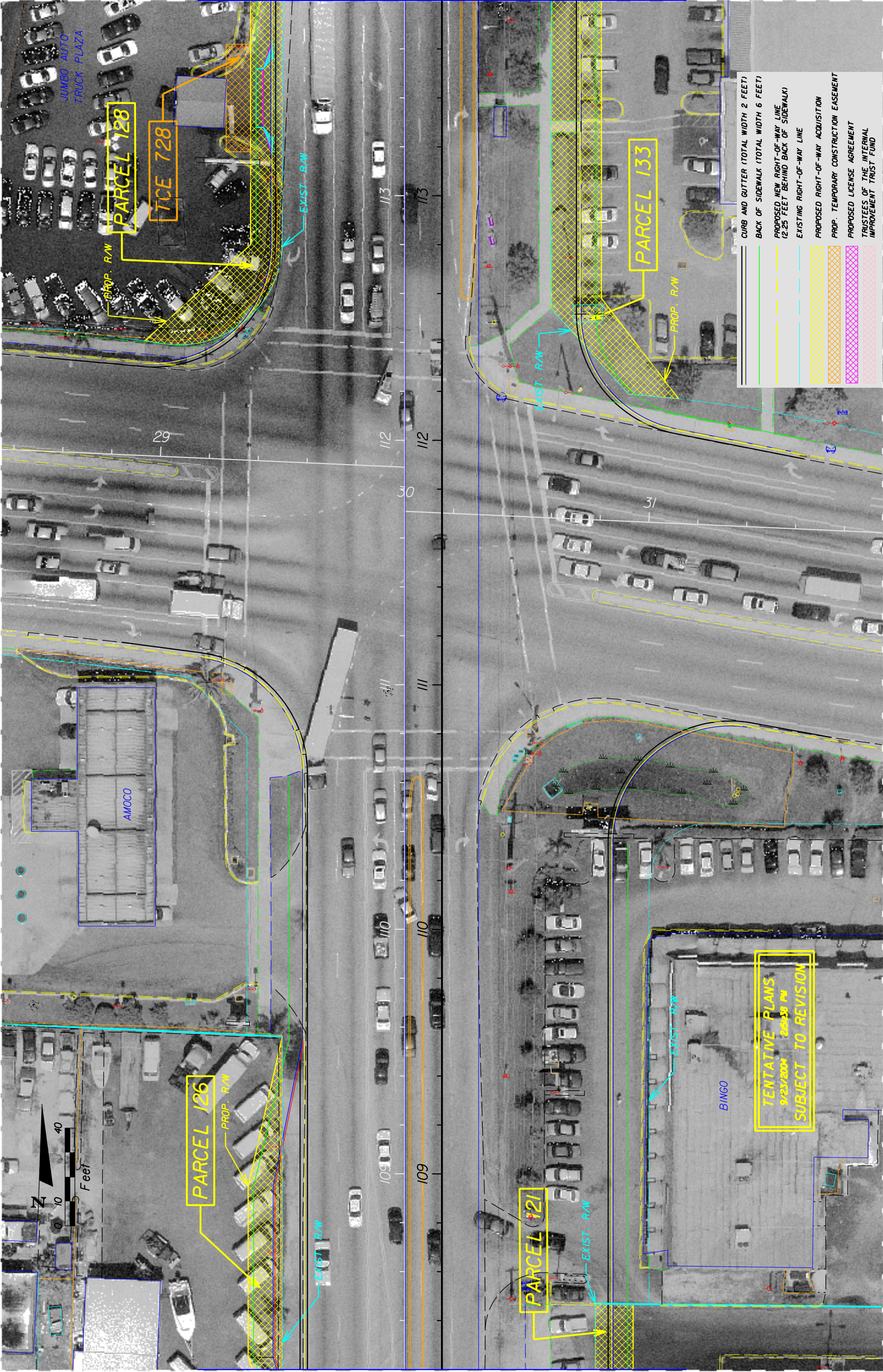


PEMBROKE Road



MATCH LINE STA. 108+20.00

MATCH LINE STA. 113+79.90

REVISIONS		DESCRIPTION	DATE	BY	DESCRIPTION

ENGINEER OF RECORD:
 JAMES EUGENE FORD, P.E. • 47526
 3400 W. COMMERCIAL BLVD.
 FORT LAUDERDALE, FL 33309

STATE OF FLORIDA		DEPARTMENT OF TRANSPORTATION	
ROAD NO.	COUNTY	FINANCIAL PROJECT ID	
7	BROWARD	22774-1-52-01	

ROADWAY PLAN - SR-7

SHEET NO. 36