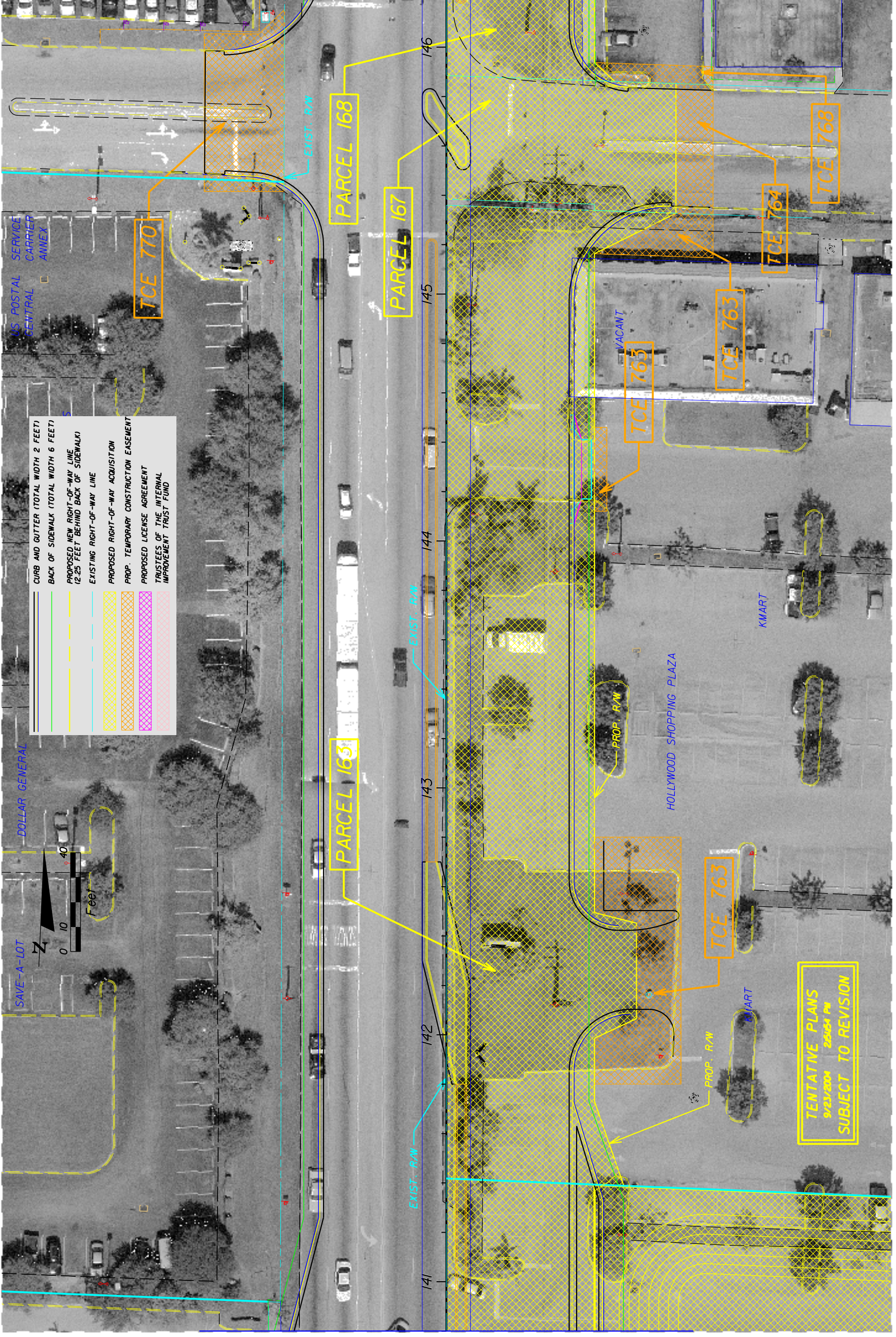


MADISON Street

MATCH LINE STA. 146+20.00

MATCH LINE STA. 140+80.00



REVISIONS		DESCRIPTION	
DATE	BY	DATE	BY

ENGINEER OF RECORD: JAMES EUGENE FORD, P.E. * 47526 3400 W. COMMERCIAL BLVD. FORT LAUDERDALE, FL 33309		STATE OF FLORIDA DEPARTMENT OF TRANSPORTATION	
ROAD NO. 7	COUNTY BROWARD	FINANCIAL PROJECT ID 227774-1-52-01	

ROADWAY PLAN - SR 7		SHEET NO. 42
---------------------	--	-----------------