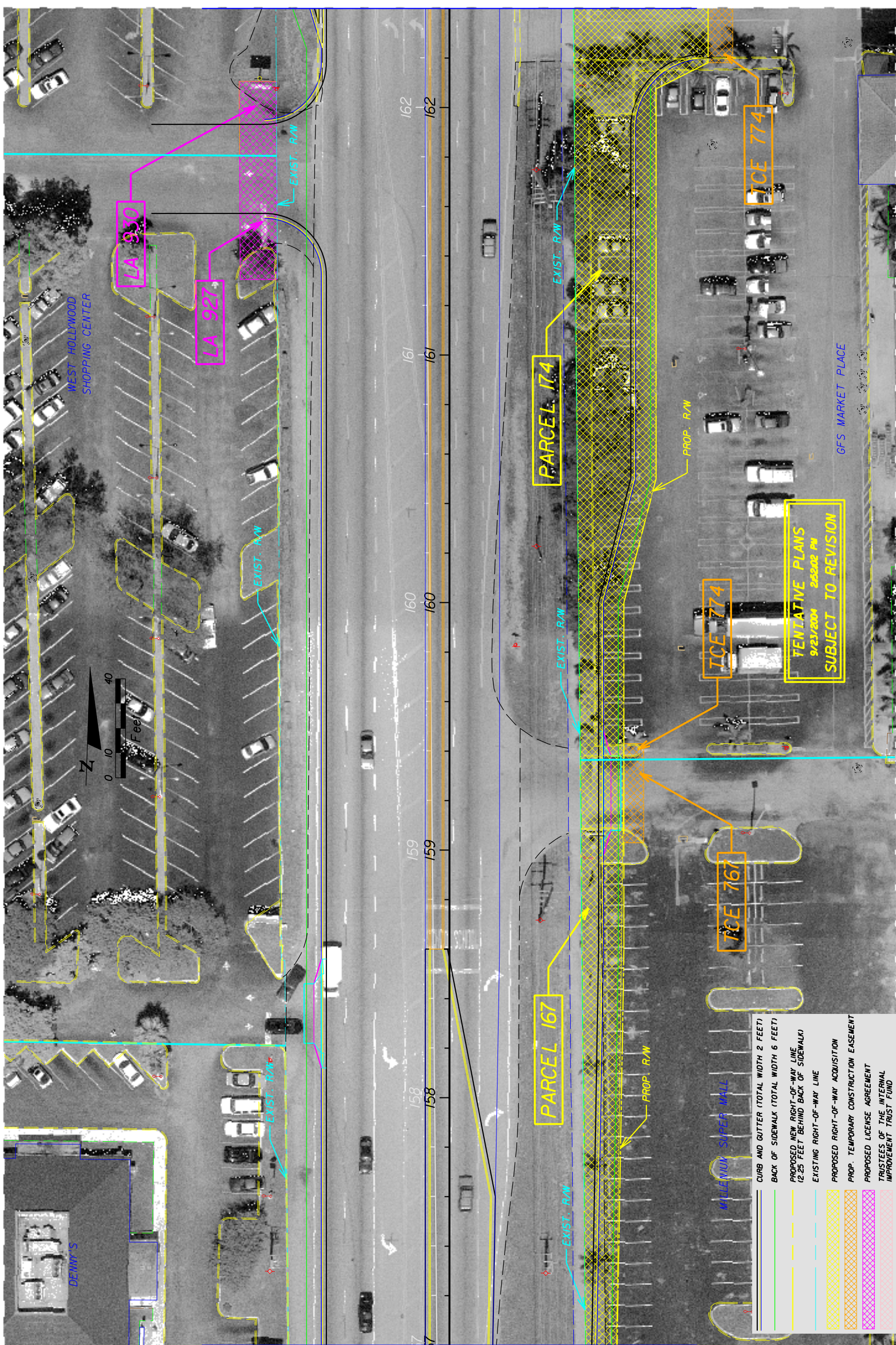


MATCH LINE STA. 157+00.00

MATCH LINE STA. 162+40.00



DATE	BY	DESCRIPTION	DATE	BY	DESCRIPTION

REVISIONS					
DATE	BY	DESCRIPTION	DATE	BY	DESCRIPTION

ENGINEER OF RECORD:
 JAMES EUGENE FORD, P.E. * 47526
 3400 W. COMMERCIAL BLVD.
 FORT LAUDERDALE, FL 33309

STATE OF FLORIDA DEPARTMENT OF TRANSPORTATION		
ROAD NO.	COUNTY	FINANCIAL PROJECT ID
7	BROWARD	22774-1-52-01

ROADWAY PLAN - SR 7

SHEET NO. 45